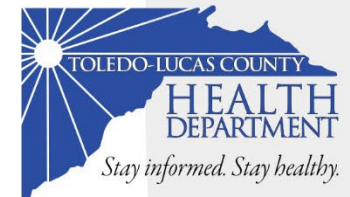


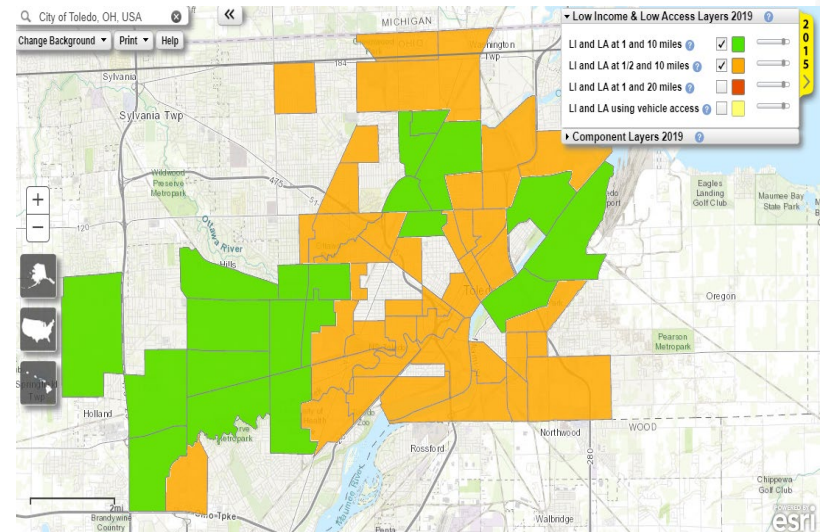
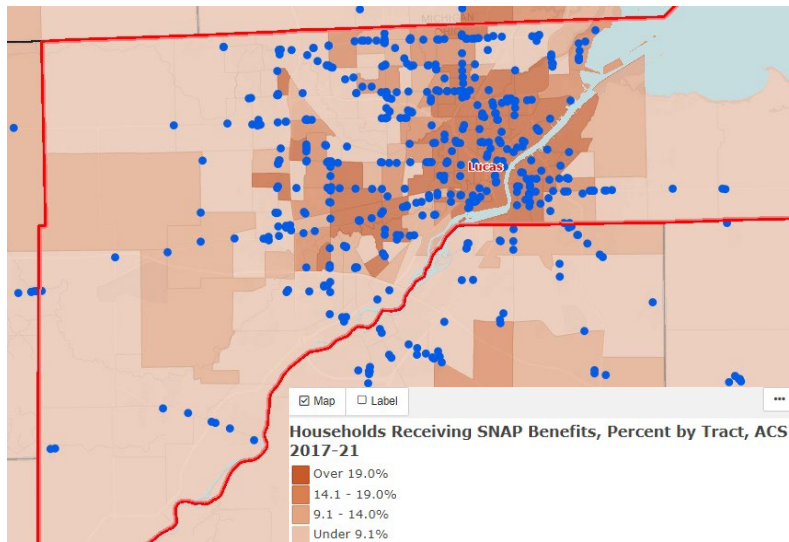
Healthy Food Small Market Pilot Program



Stephanie Baltes, RD LD
Registered Dietitian
Toledo-Lucas County Health Department

City of Toledo

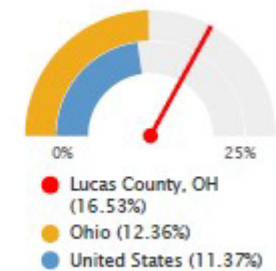
Data info and maps



Report Area	Total Households	Households Receiving SNAP Benefits	Percent Households Receiving SNAP Benefits
Lucas County, OH	179,358	29,653	16.53%
Ohio	4,754,161	587,542	12.36%
United States	124,010,992	14,105,231	11.37%

Note: This indicator is compared to the state average.
Data Source: US Census Bureau, American Community Survey, 2017-21.

Percent Households Receiving SNAP Benefits



Community Partner Engagement

Healthy Food Small Market Program Committee formed with several established and new community partners.

Community Partners on Committee

- OSU Extension
- Board of Lucas County Commissioners
- YMCA
- ToledoGROWS
- Toledo Lucas County Public Library
- TLC Plan Commissions
- Grace Community Center
- Mercy
- United Way
- Promedica
- TMACOG
- Toledo Northwestern Foodbank
- Multiple staff members from the TLCHD

*Additional discussions with Islamic Food Bank and Reinvest Toledo



Hybrid meetings held monthly: February, March, April, May and July.

Research with other programs

Connections and collaborations:

- Cities of Wichita, Rochester, St. Pete
- The Food Trust
- Produce Perks Midwest
 - In-depth discussions to set-up Produce Perks in brick-and-mortar stores in Lucas County.
 - Ohio Nutrition Incentive Network
- Just Harvest – Pittsburg, PA
- DC Central Kitchen
- Brightside Produce – Minneapolis, MN
- National Grocers Association

NOFA Application



City of Toledo
Toledo-Lucas County Health Department
Notice of Funding Availability
Healthy Food Small Market Program

This project is being supported, in whole or in part, by federal aid and number 52785816 awarded to CITY OF TOLEDO by the U.S. Department of Treasury.

Notice of Funding Availability created

Table of Contents

Overview.....	3
Eligible applicants.....	3
Eligible use of program funding.....	4
How to apply.....	5
Selection.....	5
Timeline.....	6
Scoring Criteria.....	7
APPENDIX A: Paper Application.....	8
APPENDIX B: Online application.....	15

https://lucascountyhealth.com/wp-content/uploads/2024/06/HealthyFoodSmallMarketProgram_NOFA_FINAL.pdf



NOFA Application

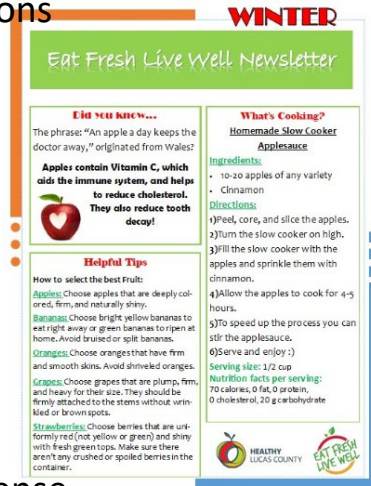
Eligible Applicants

- 5000 square feet or less
- Not part of a franchise, chain, or gas station
- Accepts SNAP
- Identified City of Toledo Zip Codes
- Ohio Retail Food Establishment License
- City of Toledo Convenience Store License (if applicable)

How Corner Store Funding will be used

Marketing

- Community engagement
- Flyers/newsletters promoting healthy food items being sold
- In-store signage
- Recipes and nutrition education materials
- On-site food demonstrations
- Mailings/post cards

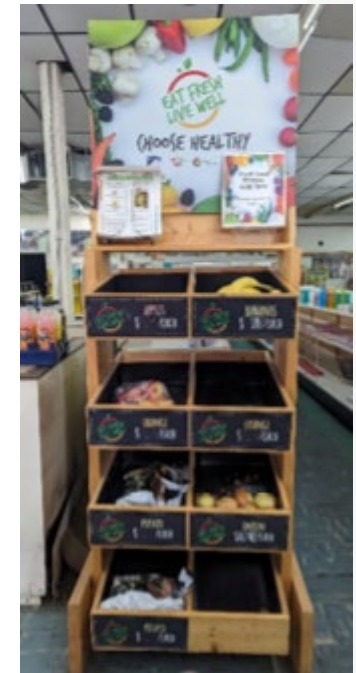


Healthy foods

- Foods that are nutrient dense
- Foods that limit fats, sugars, and sodium
- Foods that are not over processed
- Financial assistance to purchase healthy food
- Training for staff needed to properly handle foods safely

Minor equipment

- Produce stands
- Shelving units
- Produce baskets/containers, etc



Major equipment

- Commercial refrigeration unit
- Commercial freezer unit
- Point of Sale (POS) system
- Electrical improvements for equip upgrades

NOFA Application

Application Process

- Paper and online version available
- Translated into Arabic and Spanish
- 6 week timeframe to apply
 - June 17 – July 31
- Toledo-Lucas County Library Application Assistance sessions available.



QR Code to online application.

Application:
Before applying, please make sure your store meets ALL the requirements. If you do not meet the eligibility requirements for ALL listed, you are ineligible to apply for the program.

- ✓ In one of the following zip codes: 43604, 43605, 43606, 43607, 43608, 43609, 43610, 43611, 43612, 43613, 43614, 43615, 43620.
- ✓ Current Ohio Retail Food Establishment License from the Toledo-Lucas County Health Department.
- ✓ City of Toledo Convenience Store License (if applicable).
- ✓ Accept SNAP.
- ✓ Less than 5000 square feet store retail space.
- ✓ NOT part of a franchise, chain, and/or attached to a gas station.
- ✓ Committed to continuing the program on own after 12/31/2026.

If you have any questions regarding the application or program, please email amfash@to.lucas.oh.us.

Date: _____

Name of Store: _____

Store Address (include zip code): _____

Are you the store owner? Yes No

If No:

Applicant's name: _____

Position/Relationship to Store Owner: _____

Owner's Name: _____

Store Phone: _____ Owner's Phone: _____

Applicant's Phone (if not owner): _____

Email: _____

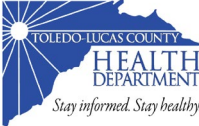
Is your store part of a franchise, chain, and/or attached to a gas station? Yes No

Do you have a current Ohio Retail Food Establishment License issued by the Toledo-Lucas County Health Department? Yes No

Do you have a City of Toledo Convenience Store License? Yes No

Does your store accept SNAP? Yes No

What is the approximate size (in square feet) of the store's retail space? _____

TOL 
City of Toledo *Stay informed. Stay healthy.*

Healthy Food Small Market Program 1st Round Application Questions

Application Page 1

1. Name of Store: *

2. Store Address Information: *

Store Address: _____

City: _____

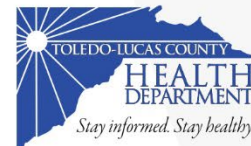
3. Store Zip Code: *
eg. 43604 *

4. Are you the store owner? *

Yes
 No

5. Owner's Name: *

6. Phone Number (No Dashes) *
eg. 4196891234 *



Promotion of program application

- Creation of HD webpage / video
<https://lucascountyhealth.com/community-outreach/healthy-food-small-market-program/>
- Creation of flyer



**OPPORTUNITY FOR
HEALTHY CORNER STORE
FUNDING**

This program provides 6 stores up to \$20,000 of funding for healthy food, marketing, and equipment.

Who is eligible?
Stores less than 5000 sqft
Accepts SNAP
Current TLCHD Retail Food Establishment License
City of Toledo Convenience Store License (if applicable)
Not part of a chain, franchise, or gas station
City of Toledo zip codes:

43604	43608	43613
43605	43609	43614
43606	43610	43615
43607	43611	43620
	43612	

To see if your store qualifies and to apply, visit lucascountyhealth.com or scan the QR code for more information.



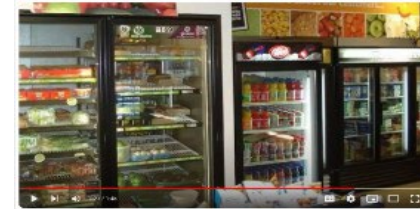

 This project is being supported, in whole or in part, by federal award number 5LFRP1610 awarded to CITY OF TOLEDO by the U.S. Department of Treasury.
 

HEALTHY FOOD, SMALL MARKET PROGRAM

Access to healthy foods is essential for maintaining overall health and well-being, but fresh and nutritious options are scarce in some neighborhoods.

The Healthy Food, Small Market Program aims to bring fresh produce and other healthy options to areas where these are otherwise difficult to access.

The Toledo-Lucas County Health Department is accepting applications from Retail Food Establishments ("RFEs") to help increase access to fresh, affordable, healthy food for Toledo residents. TLCHD seeks to partner with six small (5000 square feet or less store retail space) independently owned and licensed neighborhood RFEs. Selected RFEs may be awarded up to and no more than \$20,000 to purchase healthy foods, marketing, minor equipment, and major equipment throughout the grant period, ending December 31, 2026.



NOTICE OF FUNDING AVAILABILITY (NOFA):

As of (DATE), funding is available for convenience/corner stores to access, display, and sell healthy food options. Before applying, please make sure your store meets ALL the requirements:

- In one of the following zip codes: 43604, 43605, 43606, 43607, 43608, 43609, 43610, 43611, 43612, 43613, 43614, 43615, 43620.
- Current Ohio Retail Food Establishment License from the Toledo-Lucas County Health Department.
- Accept SNAP
- Less than 5000 square feet of store retail space.
- NOT part of a franchise, chain, and/or attached to a gas station.
- Committed to continuing the program on your own after 12/31/2026.

If you do not meet the eligibility requirements for ALL listed, you are ineligible to apply for this program.

APPLY ONLINE HERE

DOWNLOAD:

- [English Application](#)
- [Arabic Application](#)
- [Spanish Application](#)

You will need:

- Tax ID/EIN
- Square Footage of your store's retail space
- Number of employees

This project is being supported, in whole or in part, by federal award number 5LFRP1610 awarded to the CITY OF TOLEDO by the U.S. Department of Treasury.

★ STEPS TO APPLY

1. Read the entire NOFA document for detailed information about the program.
2. Attend information sessions for additional help or if you have questions (dates will be provided).
3. Complete an application with one of the following.
 - Paper application to TLCHD by (DATE)
 - Online application by (DATE).
4. TLCHD will be in contact with applicants chosen for a second-round interview.
5. TLCHD will award contracts to six (6) applicants.

DEPARTMENT INFO

Stephanie Baltus RD, LD
419.213.4692
eatfresh@co.lucas.oh.us

CONNECT



Have you visited TLCHD and/or used our services? Please let us know how we did!

You can find the survey here or scan the QR code below:



Outreach and community engagement

435 North Erie Street
Toledo, Ohio 43604-5317
419.251.4100
419.251.4027 Fax
health@lucascountryhealth.com

Barbara Barrows, MPH, MSW
Health Commissioner

LUCAS COUNTY
REGIONAL HEALTH DISTRICT
BOARD MEMBERS

Johnnie Ross, MD, President
Business Owners, Representatives
Cheryl Cline, RN, SUN
Amy Beckley, CPA, CFE
Suzie Tindler, Victim
Tyl Kaczmarek
David Karmali
Paul J. Kozmar
Richard L. Hark, MD
Susan Pugh, DPT
Matthew Sagan
Dennis Whitman, MD

AN EQUAL OPPORTUNITY
EMPLOYER
The Department operates in
accordance with Title VII of the
Civil Rights Act of 1964

Visit us on the web at:
www.lucascountryhealth.com

Rev 4/1/24

FOR IMMEDIATE RELEASE
Contact: Heather Burnette, PIO
(419) 309-0153

July 8, 2024

Health Department and City of Toledo Announce Healthy Corner Store Initiative

The Toledo-Lucas County Health Department (TLCHD) in collaboration with the City of Toledo are pleased to announce a new initiative aimed at increasing the availability and awareness of nutritious food and beverage options in neighborhood corner stores in underserved communities. The Healthy Corner Store initiative will work to respond to food access disparities observed in low-income communities.

The initiative prioritizes food deserts and is encouraging interested small stores to apply, particularly if they serve residents receiving WIC or SNAP benefits. Through December 31, 2026, selected stores may be awarded up to \$20,000 for items such as refrigeration and freezers to help with stocking fresh food items as well as educational opportunities for store owners.

The Healthy Food, Small Market Program has three primary objectives:

- **Enhancing healthy food accessibility:** The primary goal of the initiative is to improve access to nutritious foods, such as fresh fruits and vegetables, by bolstering the infrastructural capabilities of corner stores with essential resources like refrigeration and freezers to facilitate the effective stocking of healthy products.
- **Empowerment through training and technical assistance:** Storeowners will receive comprehensive training and technical support to increase the retail availability and profitability of offering healthier dietary choices.
- **Fostering community partnerships:** By forging robust connections between storeowners, local agriculturalists, and fresh food suppliers, along with private and public partnerships at working to improve food accessibility.

"Ensuring residents have access to healthy fruits and vegetables, is a part of our ongoing efforts to support health and wellness for families," said Health Commissioner Karan Baroud.

The notice of funding availability (NOFA), along with the application (accessible in English, Spanish and Arabic) can be returned via the QR code on the website: <https://lucascountryhealth.com/community-outreach/healthy-food-small-market-program>.



The Healthy Corner Store program is supported by ARPA funds, through the City of Toledo.

###

Toledo-Lucas County Health Department launches Healthy Corner Store Program



Stephanie Baites with the health department talks with Amanda Fay about the program and the importance of affordable and nutritious foods.

Author: wfol.com
Published: 5:01 PM EDT July 23, 2024
Updated: 5:01 PM EDT July 23, 2024



Posts About Videos Photos More

Toledo-Lucas County Health Department
Jun 17

Calling all convenience store owners!

The Toledo-Lucas County Health Department, in partnership with the City of Toledo, is accepting applications for grants up to \$20,000 to help you provide fresh, affordable, healthy foods in your store. We are accepting applications now through July 31. For more details, including requirements and the application form, click here: <https://ow.ly/PUt350Si2p5>

OPPORTUNITY FOR HEALTHY CORNER STORE FUNDING

Are you a City of Toledo corner store owner looking to add healthy food options in your store?

Find out if your store qualifies and apply at [lucascountryhealth.com!](http://lucascountryhealth.com)

This project is being supported, in whole or in part, by federal award number 2017P0002 awarded to CITY OF TOLEDO by the U.S. Department of Treasury

TOL
City of Toledo

Amy Becker Aboodey and 11 others 14 shares

Like Comment Copy Share

Community group meetings

- Connected and presented to multiple community neighborhood groups
 - Mercy Cherry Legacy
 - Norf End Neighbors
 - NHA
 - Reinvest Toledo
 - Olde Towne Neighborhood
 - One Voice for East Toledo
 - Discussed with Broadway Corridor Coalition President
 - Emails sent to multiple block watch groups

Application closed July 31, 2024 4:00pm

Received 13 applications (11 online, 2 paper)

7 met eligibility requirements

7 applications were blindly scored by members of the HFSMP committee

Scores were averaged and provided top 6 stores

Scoring guide and instructions were given to members

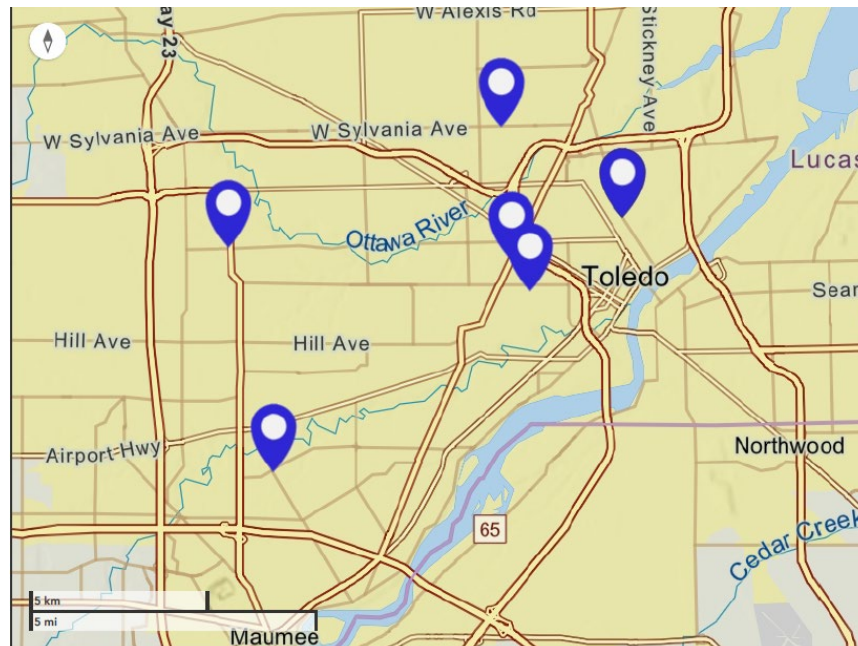
Online format was used to submit scores

In-store Assessments

6 stores were assessed

Stores were assessed by: Stephanie Baltes, Amy Abodeely and assigned EHS RS (Michael S, Addy W, Jeffery B, Amy B)

- Zip codes: 43606, 43607, 43608, 43612, 43614, 43615



43606 – Population reach: 24,536

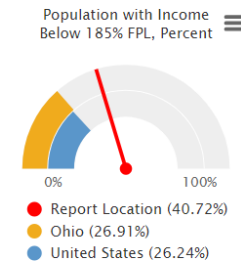
CT 25 data:

Population at or Below 185% FPL

In the report area 40.72% or 601 individuals for whom poverty status is determined are living in households with income below 185% of the Federal Poverty Level (FPL). This indicator is relevant because poverty creates barriers to access including health services, healthy food, and other necessities that contribute to poor health status.

Note: The total population measurements for poverty reports are lower than population totals for some other indicators, as poverty data collection does not include people in group quarters. See "Show more details" for more information.

Report Area	Total Population	Population with Income Below 185% FPL	Population with Income Below 185% FPL, Percent
Report Location	1,476	601	40.72%
Lucas County, OH	420,801	140,467	33.38%
Ohio	11,472,644	3,087,281	26.91%
United States	323,275,448	84,842,073	26.24%



Note: This indicator is compared to the state average.

Data Source: US Census Bureau, American Community Survey, 2018-22. → [Show more details](#)



[View larger map](#)

SNAP-Authorized Retailers, USDA Mar 2024

- SNAP-Authorized Retailers, USDA Mar 2024
- Report Location

43607 – Population reach 21,112

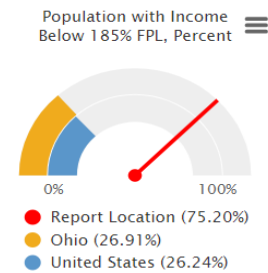
CT 33 data:

Population at or Below 185% FPL

In the report area 75.20% or 919 individuals for whom poverty status is determined are living in households with income below 185% of the Federal Poverty Level (FPL). This indicator is relevant because poverty creates barriers to access including health services, healthy food, and other necessities that contribute to poor health status.

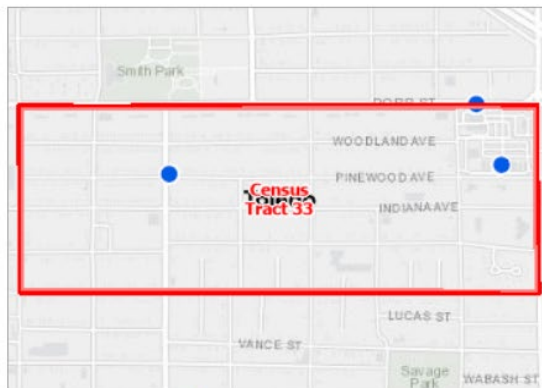
Note: The total population measurements for poverty reports are lower than population totals for some other indicators, as poverty data collection does not include people in group quarters. See "Show more details" for more information.

Report Area	Total Population	Population with Income Below 185% FPL	Population with Income Below 185% FPL, Percent
Report Location	1,222	919	75.20%
Lucas County, OH	420,801	140,467	33.38%
Ohio	11,472,644	3,087,281	26.91%
United States	323,275,448	84,842,073	26.24%



Note: This indicator is compared to the state average.

Data Source: US Census Bureau, American Community Survey, 2018-22. → [Show more details](#)



[View larger map](#)

SNAP-Authorized Retailers, USDA Mar 2024

- SNAP-Authorized Retailers, USDA Mar 2024
- Report Location

43608 – Population reach 14,378

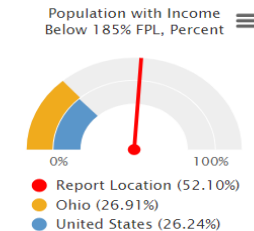
CT 17 data:

Population at or Below 185% FPL

In the report area 52.10% or 472 individuals for whom poverty status is determined are living in households with income below 185% of the Federal Poverty Level (FPL). This indicator is relevant because poverty creates barriers to access including health services, healthy food, and other necessities that contribute to poor health status.

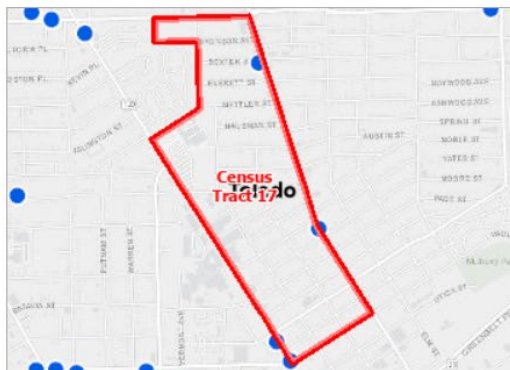
Note: The total population measurements for poverty reports are lower than population totals for some other indicators, as poverty data collection does not include people in group quarters. See "Show more details" for more information.

Report Area	Total Population	Population with Income Below 185% FPL	Population with Income Below 185% FPL, Percent
Report Location	906	472	52.10%
Lucas County, OH	420,801	140,467	33.38%
Ohio	11,472,644	3,087,281	26.91%
United States	323,275,448	84,842,073	26.24%



Note: This indicator is compared to the state average.

Data Source: US Census Bureau, American Community Survey. 2018-22. → [Show more details](#)



[View larger map](#)

SNAP-Authorized Retailers, USDA Mar 2024

- SNAP-Authorized Retailers, USDA Mar 2024
- Report Location

43612 – Population reach 28,565

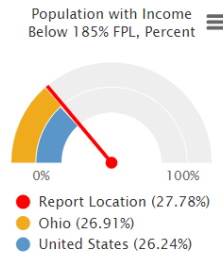
CT 6.01 data:

Population at or Below 185% FPL

In the report area 27.78% or 1,063 individuals for whom poverty status is determined are living in households with income below 185% of the Federal Poverty Level (FPL). This indicator is relevant because poverty creates barriers to access including health services, healthy food, and other necessities that contribute to poor health status.

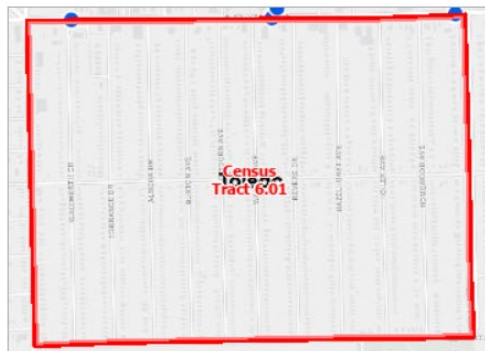
Note: The total population measurements for poverty reports are lower than population totals for some other indicators, as poverty data collection does not include people in group quarters. See "Show more details" for more information.

Report Area	Total Population	Population with Income Below 185% FPL	Population with Income Below 185% FPL, Percent
Report Location	3,826	1,063	27.78%
Lucas County, OH	420,801	140,467	33.38%
Ohio	11,472,644	3,087,281	26.91%
United States	323,275,448	84,842,073	26.24%



Note: This indicator is compared to the state average.

Data Source: US Census Bureau, American Community Survey, 2018-22. → Show more details



[View larger map](#)

SNAP-Authorized Retailers, USDA Mar 2024

- SNAP-Authorized Retailers, USDA Mar 2024
- Report Location

43614 – Population reach 28,885

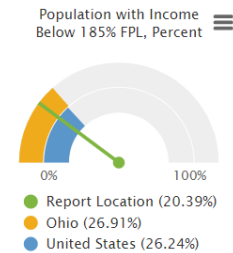
CT 72.02 data:

Population at or Below 185% FPL

In the report area 20.39% or 686 individuals for whom poverty status is determined are living in households with income below 185% of the Federal Poverty Level (FPL). This indicator is relevant because poverty creates barriers to access including health services, healthy food, and other necessities that contribute to poor health status.

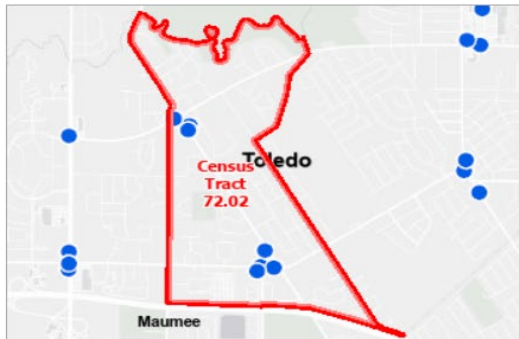
Note: The total population measurements for poverty reports are lower than population totals for some other indicators, as poverty data collection does not include people in group quarters. See "Show more details" for more information.

Report Area	Total Population	Population with Income Below 185% FPL	Population with Income Below 185% FPL, Percent
Report Location	3,364	686	20.39%
Lucas County, OH	420,801	140,467	33.38%
Ohio	11,472,644	3,087,281	26.91%
United States	323,275,448	84,842,073	26.24%



Note: This indicator is compared to the state average.

Data Source: US Census Bureau, American Community Survey. 2018-22. → Show more details



[View larger map](#)

SNAP-Authorized Retailers, USDA Mar 2024

- SNAP-Authorized Retailers, USDA Mar 2024
- Report Location

43615 – Population reach 39,405

CT 85.01 data:

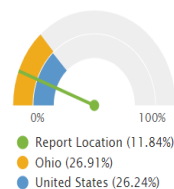
Population at or Below 185% FPL

In the report area 11.84% or 313 individuals for whom poverty status is determined are living in households with income below 185% of the Federal Poverty Level (FPL). This indicator is relevant because poverty creates barriers to access including health services, healthy food, and other necessities that contribute to poor health status.

Note: The total population measurements for poverty reports are lower than population totals for some other indicators, as poverty data collection does not include people in group quarters. See "Show more details" for more information.

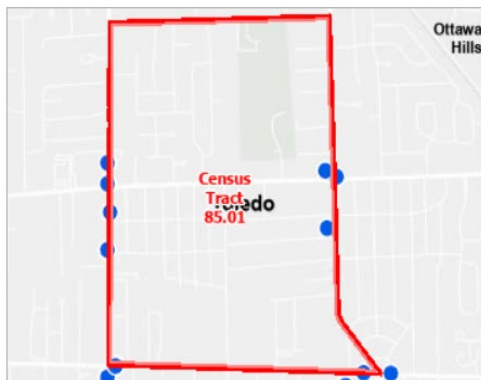
Report Area	Total Population	Population with Income Below 185% FPL	Population with Income Below 185% FPL, Percent
Report Location	2,644	313	11.84%
Lucas County, OH	420,801	140,467	33.38%
Ohio	11,472,644	3,087,281	26.91%
United States	323,275,448	84,842,073	26.24%

Population with Income Below 185% FPL, Percent



Note: This indicator is compared to the state average.

Data Source: US Census Bureau, American Community Survey, 2018-22. → Show more details



[View larger map](#)

SNAP-Authorized Retailers, USDA Mar 2024

- SNAP-Authorized Retailers, USDA Mar 2024
- Report Location

Assessment tool created/used

Healthy Food Small Market Program Second Round Interview/In-store Assessment

Store: _____ Date: _____
 Store Address: _____ Store Owner: _____
 Interview completed by: _____

I. Visual Assessment:
Check if no produce is currently sold _____

A. Fresh Fruits and Vegetables:

Item	Available	Price	Quality
Apples	<input type="checkbox"/> Yes <input type="checkbox"/> No	\$ _____ Per item, lb, bag	<input type="checkbox"/> Good <input type="checkbox"/> Average <input type="checkbox"/> Poor
Bananas	<input type="checkbox"/> Yes <input type="checkbox"/> No	\$ _____ Per item, lb, bag	<input type="checkbox"/> Good <input type="checkbox"/> Average <input type="checkbox"/> Poor
Grapes	<input type="checkbox"/> Yes <input type="checkbox"/> No	\$ _____ Per item, lb, bag	<input type="checkbox"/> Good <input type="checkbox"/> Average <input type="checkbox"/> Poor
Oranges	<input type="checkbox"/> Yes <input type="checkbox"/> No	\$ _____ Per item, lb, bag	<input type="checkbox"/> Good <input type="checkbox"/> Average <input type="checkbox"/> Poor
Peaches	<input type="checkbox"/> Yes <input type="checkbox"/> No	\$ _____ Per item, lb, bag	<input type="checkbox"/> Good <input type="checkbox"/> Average <input type="checkbox"/> Poor
Strawberries	<input type="checkbox"/> Yes <input type="checkbox"/> No	\$ _____ Per item, lb, bag	<input type="checkbox"/> Good <input type="checkbox"/> Average <input type="checkbox"/> Poor
Pears	<input type="checkbox"/> Yes <input type="checkbox"/> No	\$ _____ Per item, lb, bag	<input type="checkbox"/> Good <input type="checkbox"/> Average <input type="checkbox"/> Poor
Lettuce	<input type="checkbox"/> Yes <input type="checkbox"/> No	\$ _____ Per item, lb, bag	<input type="checkbox"/> Good <input type="checkbox"/> Average <input type="checkbox"/> Poor
Onions	<input type="checkbox"/> Yes <input type="checkbox"/> No	\$ _____ Per item, lb, bag	<input type="checkbox"/> Good <input type="checkbox"/> Average <input type="checkbox"/> Poor
Carrots	<input type="checkbox"/> Yes <input type="checkbox"/> No	\$ _____ Per item, lb, bag	<input type="checkbox"/> Good <input type="checkbox"/> Average <input type="checkbox"/> Poor
Tomatoes	<input type="checkbox"/> Yes <input type="checkbox"/> No	\$ _____ Per item, lb, bag	<input type="checkbox"/> Good <input type="checkbox"/> Average <input type="checkbox"/> Poor
Celery	<input type="checkbox"/> Yes <input type="checkbox"/> No	\$ _____ Per item, lb, bag	<input type="checkbox"/> Good <input type="checkbox"/> Average <input type="checkbox"/> Poor
Potatoes	<input type="checkbox"/> Yes <input type="checkbox"/> No	\$ _____ Per item, lb, bag	<input type="checkbox"/> Good <input type="checkbox"/> Average <input type="checkbox"/> Poor
Green Peppers	<input type="checkbox"/> Yes <input type="checkbox"/> No	\$ _____ Per item, lb, bag	<input type="checkbox"/> Good <input type="checkbox"/> Average <input type="checkbox"/> Poor

B. Store Structure:

1. How do they display their fruits and vegetables?

2. Is the inventory plentiful?
 Yes No

3. How much shelf/produce stand space is devoted to fruits and vegetables?

4. How many refrigeration and freezer units are in the store? What are their approximate sizes?

6. Is there space for new and/or additional refrigeration/freezer unit(s) if needed? If so, how much?

6a. Will electrical upgrades be needed? Yes No

5. Is there space on the walls for posters and signage?
 Yes No

6. Is there space for display units (recipe books, nutrition education handouts etc.)?

7. Rate the following characteristics of the store:

Cleanliness	<input type="checkbox"/> Good <input type="checkbox"/> Average <input type="checkbox"/> Poor
Overall in-store condition	<input type="checkbox"/> Good <input type="checkbox"/> Average <input type="checkbox"/> Poor
Overall outside condition	<input type="checkbox"/> Good <input type="checkbox"/> Average <input type="checkbox"/> Poor
Condition of the windows	<input type="checkbox"/> Good <input type="checkbox"/> Average <input type="checkbox"/> Poor
Condition of the walls	<input type="checkbox"/> Good <input type="checkbox"/> Average <input type="checkbox"/> Poor
Condition of the ceilings	<input type="checkbox"/> Good <input type="checkbox"/> Average <input type="checkbox"/> Poor

8. Does the store:

Accept WIC	<input type="checkbox"/> Yes <input type="checkbox"/> No
Accept SNAP	<input type="checkbox"/> Yes <input type="checkbox"/> No
Have a kitchen	<input type="checkbox"/> Yes <input type="checkbox"/> No
Have a deli	<input type="checkbox"/> Yes <input type="checkbox"/> No
Sell prepared food	<input type="checkbox"/> Yes <input type="checkbox"/> No
Sell alcoholic beverages	<input type="checkbox"/> Beer <input type="checkbox"/> Wine <input type="checkbox"/> Srites
Sell cigarettes	<input type="checkbox"/> Yes <input type="checkbox"/> No

Picture of part of the assessment used

Report of store assessments

Healthy Corner Store Assessments



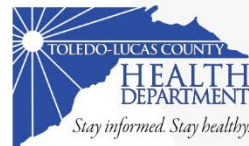
City of Toledo
Toledo-Lucas County Health Department
6 Store assessment overview
Healthy Food Small Market Program

This project is being supported, in whole or in part, by federal award number SLFRP1610 awarded to CITY OF TOLEDO by the U.S. Department of Treasury.

1

40 page document created detailing overview:

- General budget allocation
- Individual store's assessment with:
 - community data in identified census tract
 - what the store has
 - what the store needs
 - pictures of stores



What's next?

- Contracts being drafted to begin partnership between store and TLCHD
- Surveying will begin in each store to receive community input on what healthy foods they want sold in the store
- Create a plan with stores and produce distribution
- Contracts for large equipment purchases
- Work with store owner to create timeline for food demos, nutrition education, marketing, and community outreach activities

