



City of Toledo

Public Service

Mobility, Sustainability & Beautification Committee Hearing
August 7, 2025

Department of Public Service

Dedicated to fostering a clean and thriving community, we are committed to excellence in service delivery through clear communication, collaborative efforts, and pride in ensuring the highest standards of public well-being and sustainable practices.

Facility & Fleet Operations

- Facilities & Fleet Operations is responsible for maintaining all City of Toledo facilities, vehicles, and equipment.

Solid Waste

- Solid Waste is dedicated to the safe operation of the Hoffman Road landfill in accordance with regulatory compliance.
- On average, Solid Waste manages ~160,000 tons of solid waste annually

Urban Beautification

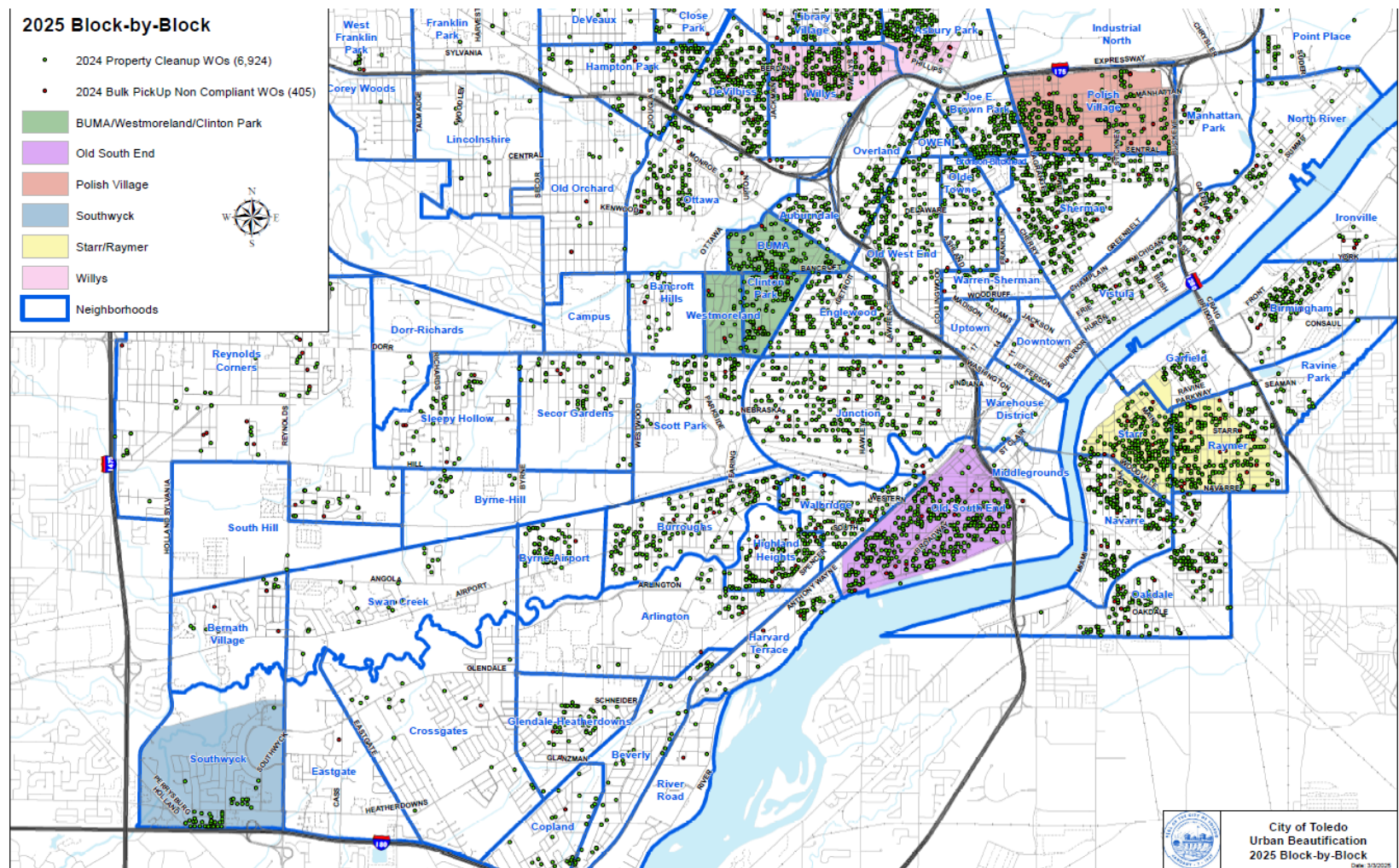
- Urban Beautification is comprised of Cleaning, Forestry, and Land Maintenance
- Cleaning is responsible for street & alley cleaning, blight collection, leaf collection, housing demolition, and city-wide recycling drop-off events
- Forestry is responsible for managing the city tree inventory. Forestry plants and removes trees as well as cleans up storm damage, and remove stumps.
- Land Maintenance is responsible for mowing & maintaining city property, as well as mowing nuisance properties reported for high grass.



Clean Toledo Team Blight Statistics

| 2023 | | | | | 2024 | | | | | 2025 (1 Jan - 26 Jul) | | | | |
|--------------------|--------|-------------------------------|----------------------|---------------------------|--------------------|--------|-------------------------------|----------------------|---------------------------|-----------------------|--------|-------------------------------|----------------------|---------------------------|
| | | Non-compliant bulk pick up | Property Clean up | REPEATERS Bulk / Prop. | | | Non-compliant bulk pick up | Property Clean up | REPEATERS Bulk / Prop. | | | Non-compliant bulk pick up | Property Clean up | REPEATERS Bulk / Prop. |
| Zip Code | TOTALS | | | | Zip Code | TOTALS | | | | Zip Code | TOTALS | | | |
| 43604 | 269 | 5 | 264 | 0 / 27 | 43604 | 166 | 9 | 157 | 0 / 15 | 43604 | 246 | 123 | 123 | 0 / 6 |
| 43605 | 1671 | 33 | 1638 | 0 / 235 | 43605 | 1206 | 79 | 1127 | 5 / 126 | 43605 | 739 | 5 | 734 | 0 / 38 |
| 43606 | 464 | 13 | 451 | 1 / 39 | 43606 | 510 | 19 | 491 | 0 / 55 | 43606 | 373 | 7 | 366 | 0 / 32 |
| 43607 | 812 | 27 | 785 | 0 / 76 | 43607 | 679 | 34 | 645 | 0 / 43 | 43607 | 435 | 11 | 424 | 0 / 22 |
| 43608 | 1112 | 27 | 1085 | 1 / 144 | 43608 | 980 | 60 | 920 | 0 / 103 | 43608 | 389 | 16 | 373 | 0 / 12 |
| 43609 | 1194 | 66 | 1128 | 1 / 120 | 43609 | 1193 | 72 | 1121 | 1 / 141 | 43609 | 742 | 18 | 724 | 0 / 51 |
| 43610 | 275 | 8 | 267 | 0 / 32 | 43610 | 304 | 8 | 296 | 0 / 30 | 43610 | 158 | 4 | 154 | 0 / 7 |
| 43611 | 342 | 17 | 325 | 0 / 26 | 43611 | 255 | 32 | 223 | 1 / 14 | 43611 | 224 | 5 | 219 | 0 / 14 |
| 43612 | 1088 | 20 | 1068 | 0 / 145 | 43612 | 1101 | 46 | 1055 | 3 / 119 | 43612 | 702 | 6 | 696 | 0 / 53 |
| 43613 | 637 | 22 | 615 | 0 / 57 | 43613 | 790 | 30 | 760 | 1 / 82 | 43613 | 568 | 7 | 561 | 0 / 32 |
| 43614 | 136 | 5 | 131 | 0 / 5 | 43614 | 195 | 15 | 180 | 0 / 15 | 43614 | 170 | 1 | 169 | 0 / 3 |
| 43615 | 134 | 8 | 126 | 0 / 6 | 43615 | 140 | 21 | 119 | 0 / 5 | 43615 | 110 | 4 | 106 | 0 / 4 |
| 43620 | 109 | 4 | 105 | 0 / 8 | 43620 | 166 | 10 | 156 | 0 / 14 | 43620 | 108 | 1 | 107 | 0 / 10 |
| 43623 | 140 | 4 | 136 | 0 / 8 | 43623 | 113 | 8 | 105 | 0 / 5 | 43623 | 149 | 3 | 146 | 0 / 9 |
| | | | | | | | | | | | | | | |
| Over all Totals | 8383 | 259 | 8124 | 3 / 928 | Over all Totals | 7798 | 443 | 7355 | 11 / 767 | Over all Totals | 5113 | 211 | 4902 | 0 / 293 |
| | | Non-compliant bulk pick up | Property Clean up | REPEATERS Bulk / Prop. | | | Non-compliant bulk pick up | Property Clean up | REPEATERS Bulk / Prop. | | | Non-compliant bulk pick up | Property Clean up | REPEATERS Bulk / Prop. |

Clean Toledo Team Blight Clean Ups & Non Compliant Work Orders



Process:

DAY 1: Garbage Collection
DAY 2: Bulk Pick-Up
DAY 3: City Clean Toledo Blight Team

Land Maintenance

Schedule:

Parks, Blvds, ROW
April 21 – July 31: Weekly
August 1 – Oct. 31: Bi-weekly

Neighborhood Parcels
April 21 – June 30: Bi-weekly
July 1 – Oct. 31: Monthly

Contracts (Parcels)

| Right of Way | | | Parks | | | Neighborhood/Opportunity Lots | | |
|--------------|-------------|-------------|-------------|-------------|-------------|-------------------------------|-------------|-------------|
| <u>2023</u> | <u>2024</u> | <u>2025</u> | <u>2023</u> | <u>2024</u> | <u>2025</u> | <u>2023</u> | <u>2024</u> | <u>2025</u> |
| 110 | 112 | 112 | 100 | 100 | 100 | 5,440 | 5,435 | 5,925 |

Selected contractors provide the labor, materials, equipment and service on a schedule as directed, necessary to perform grass cutting services.

Land Maintenance

| | NUAB | | | | | |
|--|--------------|--------------|-------------------|--|--|--|
| | 2022 | 2023 | 2024 | | | |
| Assessed | 1,452,367.27 | 1,254,770.05 | Assessed in 2026 | | | |
| Collected | 531,738.88 | 585,387.92* | Not Collected Yet | | | |
| | | | | | | |
| *2nd half of 2025 payments were due July 31, so this number does not reflect 100% collection | | | | | | |
| | | | | | | |

Table reflects all Nuisance Abatement work : Property Clean-up, Board-Ups, Grass Mowing, Blight Non-Compliant Pick-ups

Forestry

*total # of trees planted does not include projects overseen by Engineering Services

| FISCAL YEAR | 2023 | 2024 | 2025 YTD 7/30/25 | SCHEDULED REMAINING WORK 2025 | ANTICIPATED TOTALS FOR 2025 |
|----------------------------------|-------|-------|-------------------|-------------------------------|-----------------------------|
| TREES PLANTED BY FORESTRY STAFF | 1,092 | 1,463 | 762- Spring Only | FALL 766 | 1,528 |
| TREES PLANTED BY CONTRACTOR | | 997 | 1324- Spring Only | FALL RE-TREE 907 | 2,231 |
| TOTAL TREES PLANTED | 1,092 | 2,460 | 2,086 | 1673 | 3,759* |
| TREES REMOVED BY FORESTRY STAFF | 1242 | 1571 | 820 | WEATHER DEPENDENT | 1,528+ |
| TREES REMOVED BY CONTRACTOR | 66 | 51 | 67 | 123 UNDER CONTRACT | 190 |
| TOTAL TREES REMOVED | 1308 | 1622 | 887 | 831 | 1718 |
| TREES TRIMMED BY FORESTRY STAFF | 1,053 | 1,819 | 1,186 | WEATHER DEPENDENT | 1819 |
| TREE TRIMMING DONE BY CONTRACTOR | 0 | 0 | 0 | 0 | 0 |
| STUMPS DONE BY FORESTRY STAFF | 1149 | 442 | 223 | 219 | 442 |
| STUMPS DONE BY CONTRACTOR | 274 | 279 | 80 | 786 UNDER CONTRACT | 866 |
| TOTAL TREE STUMPS REMOVED | 1423 | 721 | 303 | 1,005 | 1308 |



Thank you.

➡ toledo.oh.gov