

City of Toledo

Division of Urban Beautification

Tree Canopy

Overview

Roadway and Reconstruction
Utility Projects

Current tree canopy

Heat and census maps

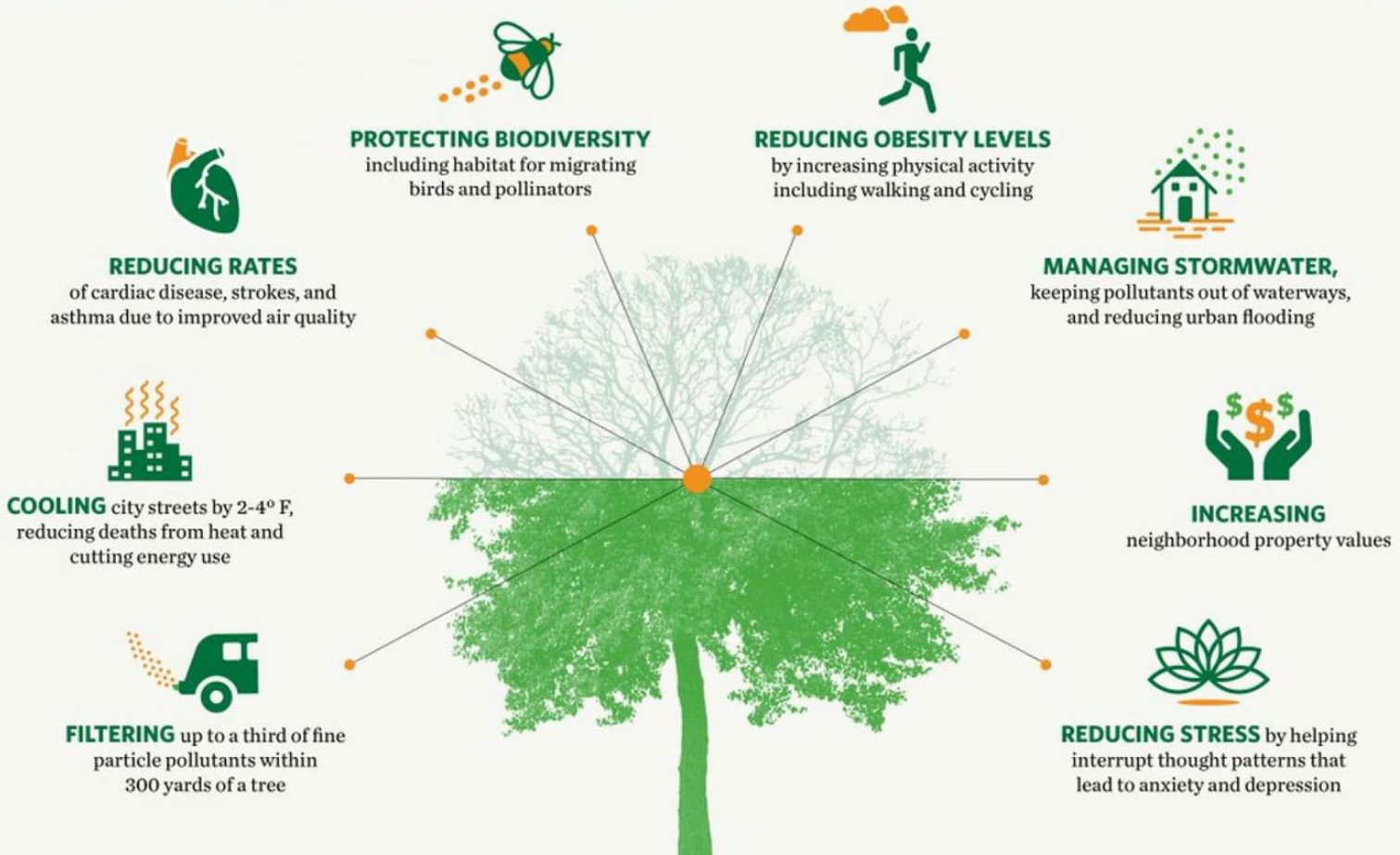
Strategic tree planting

Urban Reforestation

Priority Planting

Benefits of Urban Trees

Research has linked the presence of urban trees to...



Roadway and Reconstruction Utility Projects

Purpose

The Department of Transportation recognizes that street trees are a vital part of any neighborhood or street. Roadway and utility construction projects, specifically roadway reconstructions, while necessary are detrimental to existing street trees (trees) in the right of way. In coordination with the Division of Urban Beautification, the Division of Engineering & Construction Management has developed a process for ensuring trees are considered during the design phase of roadway and utility construction projects. The goal is to preserve or replant as many trees as possible as part of the construction projects.

Roadway and Reconstruction Utility Projects

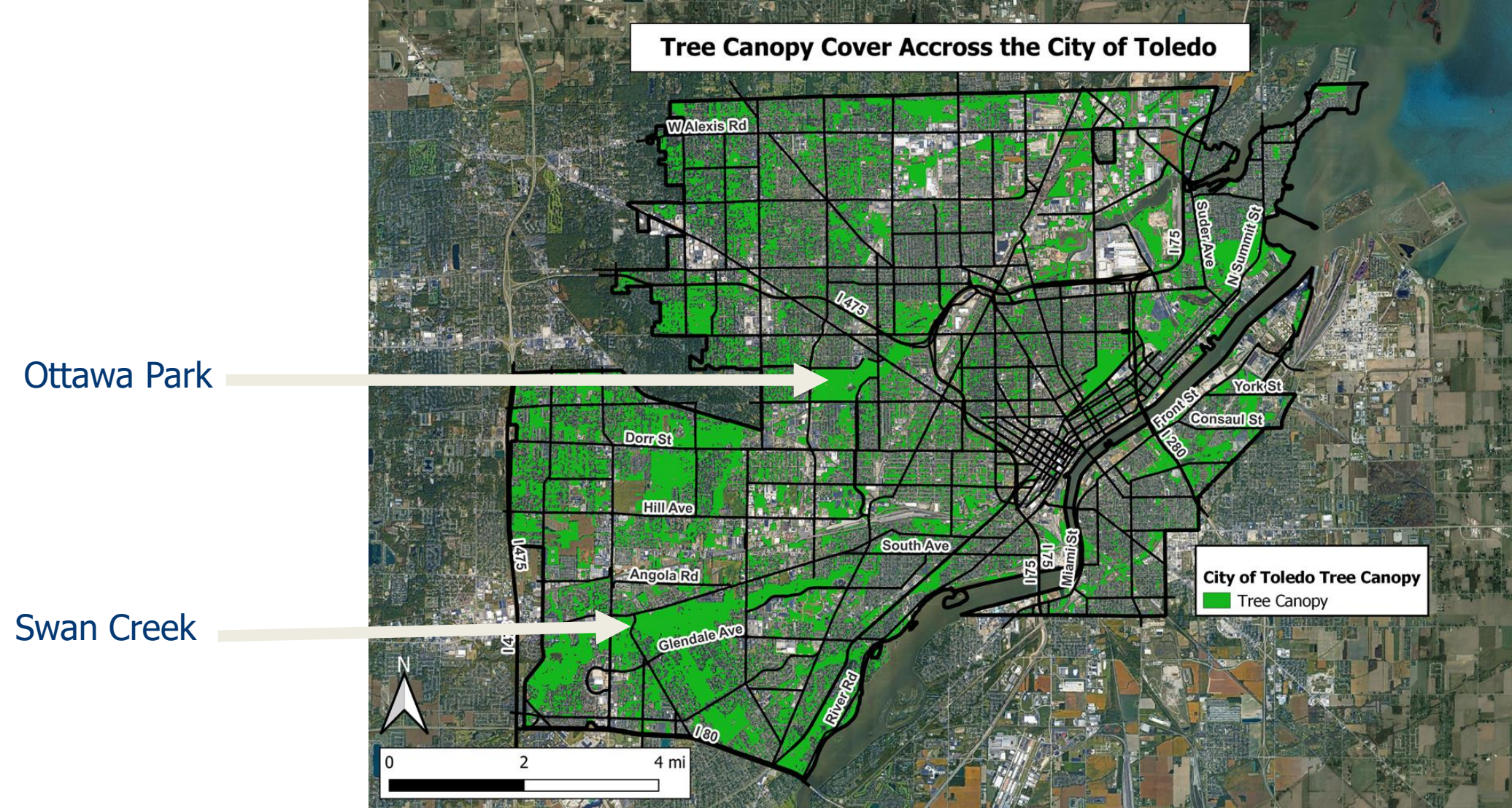
When designing projects, TDOT Engineers will review multiple design options and the impact to the street tree lawn.

When there are multiple acceptable design options, resident feedback will be considered.

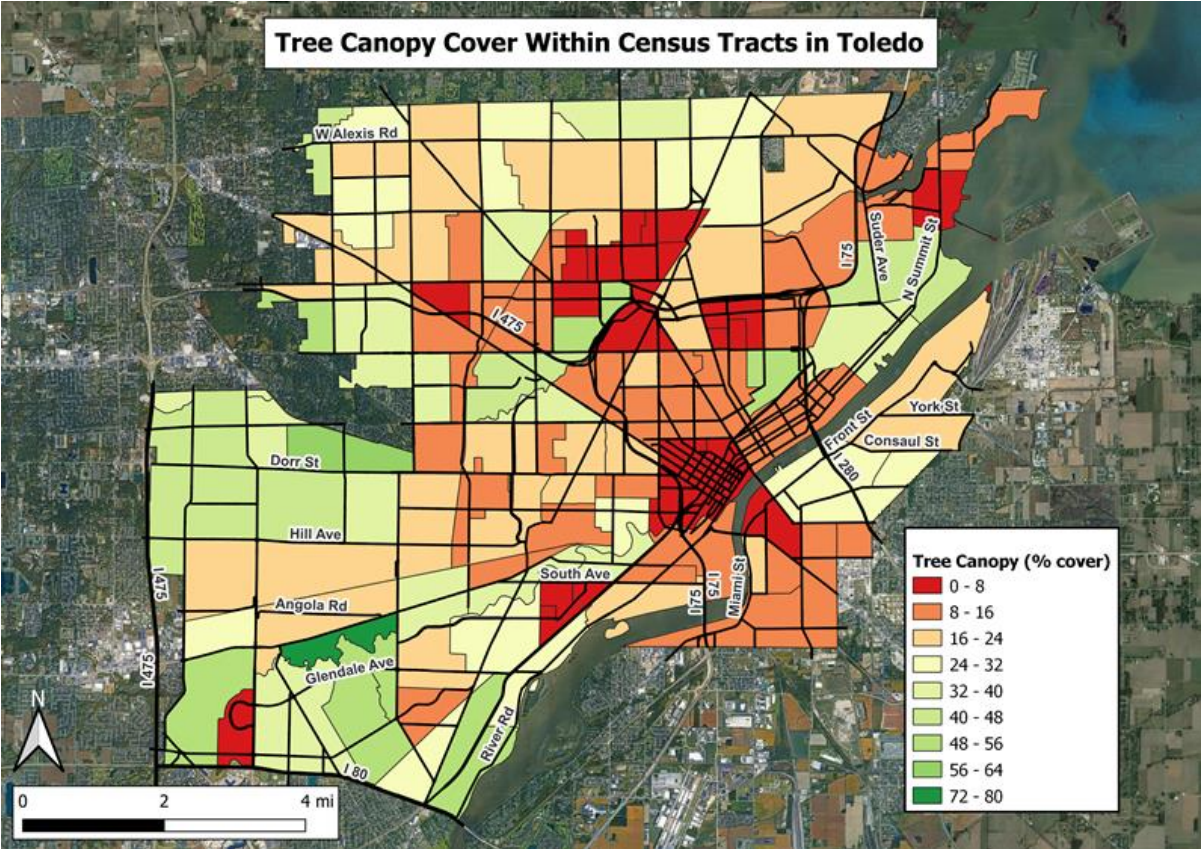
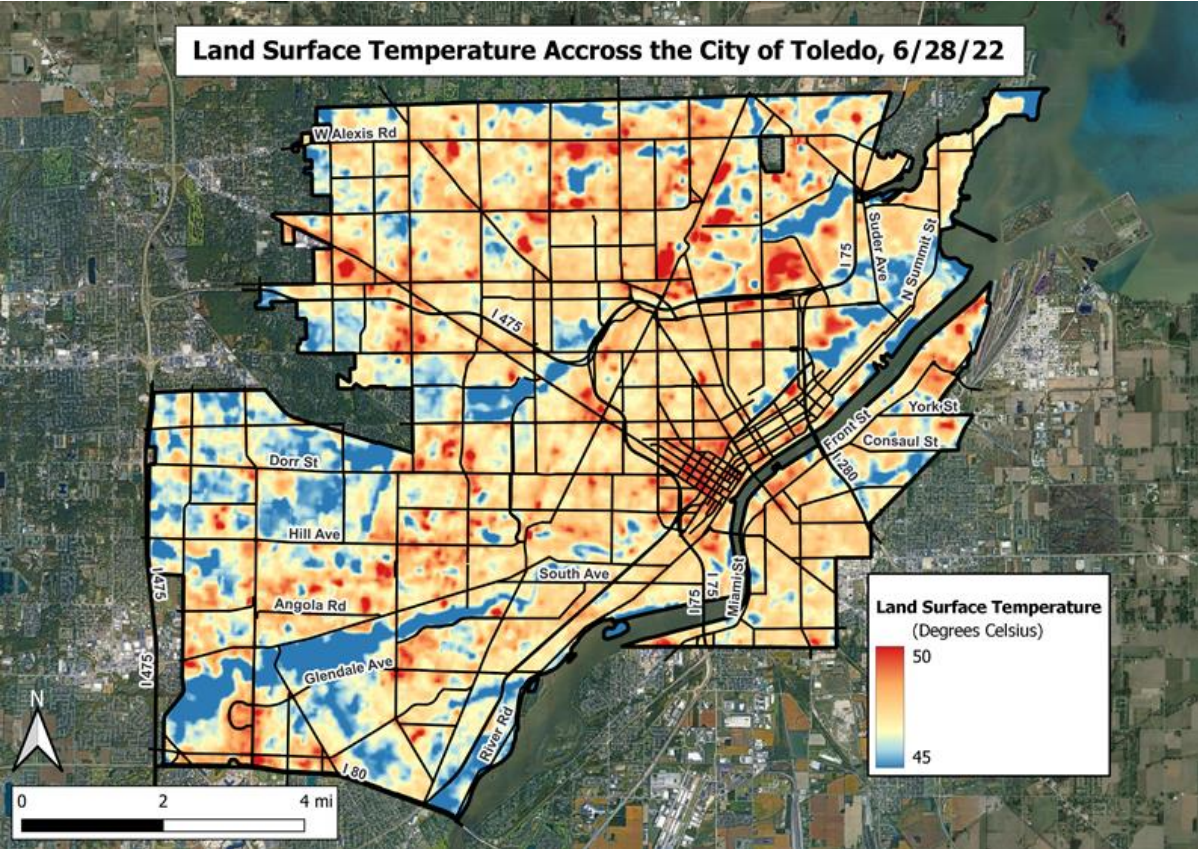
When it has been determined a significant amount of trees need to be cut down, a replanting plan, in coordination with the division of Urban Beautification will be included in the request for proposals.



Current Tree Canopy

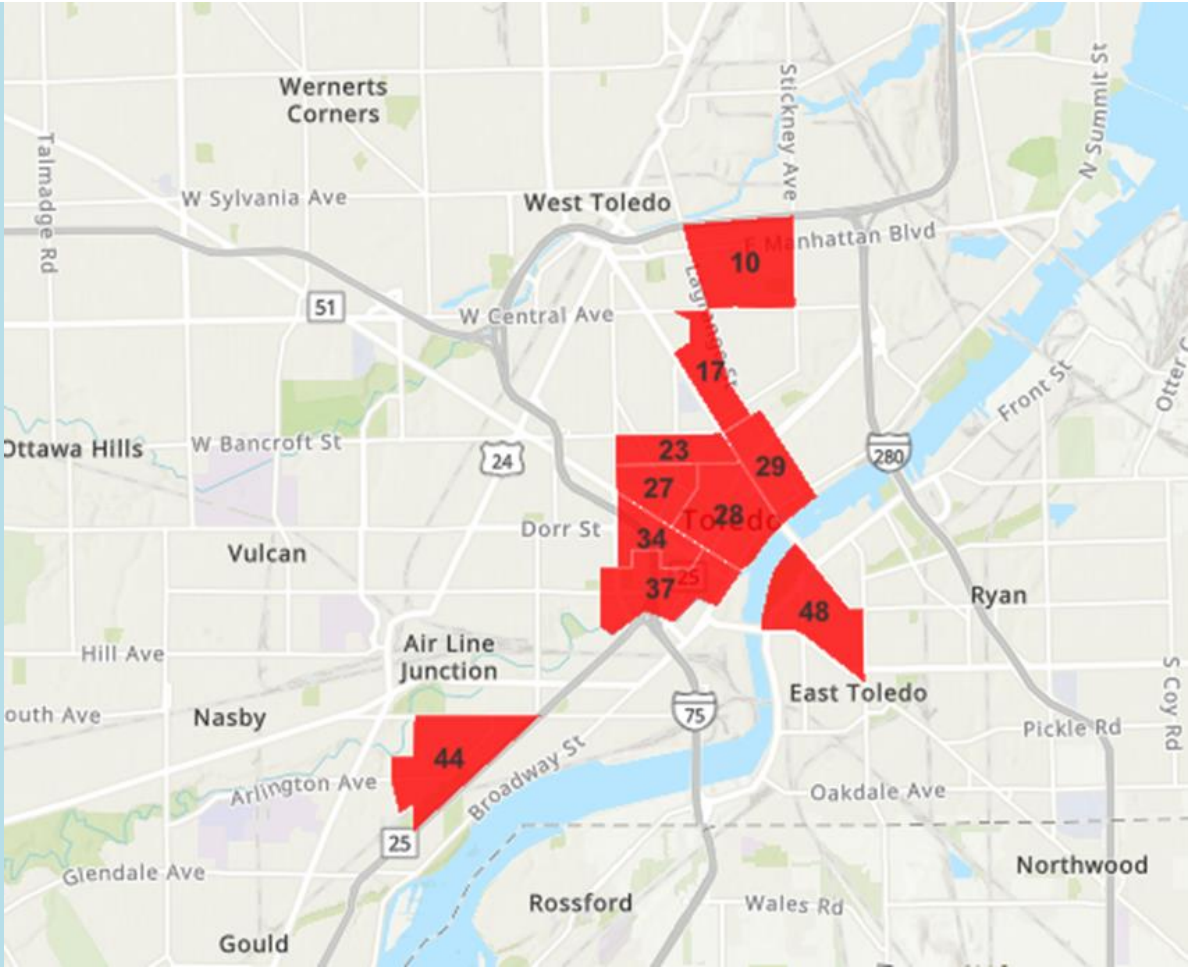


Heat Map vs. Tree Canopy



Planting by Area

Tract Name	Canopy Cover	Mean Land Surface Temperature F
Census Tract 27	3.00%	120.17
Census Tract 28	1.70%	119.85
Census Tract 34	3.70%	119.66
Census Tract 37	9.50%	119.11
Census Tract 29	8.80%	118.97
Census Tract 23	8.90%	118.92
Census Tract 48	4.70%	118.32
Census Tract 44	3.60%	118.11
Census Tract 10	5.90%	118.53



Urban Reforestation Approach

Partnership with the Metroparks

\$200,000 US Forest Service Grant

15,000 trees being planted in city of Toledo parks

Replacing areas currently being mowed with trees



Tree Planting Strategy

Tree Selection

Planting to shading sidewalk and bike lanes, beautify a green space, stormwater and flood control, slowing traffic.

Increase species diversity, reduce susceptibility to pests and diseases.

Climate and Development Change

Planting to mitigate climate change-reducing urban heat Islands effect and energy burden on buildings.

Planting to replace loss to natural aging, weather related events and to construction/development projects.

Project Coordination

Metroparks, Parks & Youth Services, TDOT, Environmental Services, Urban Beautification



Thank you.

➡ toledo.oh.gov