

GENERAL INFORMATION

Subject

Request - Special Study to Modify Location of Public Art

Applicant - Arts Commission of Greater Toledo
1838 Parkwood Avenue, Suite 120
Toledo, OH 43604

Applicable Plans

- 2015 Toledo Strategic Plan for Arts and Culture
- 2024 Toledo Municipal Art Plan

STAFF ANALYSIS

The City of Toledo’s One Percent Art program allocates a portion of City funds for public art. The Arts in Public Places Program is overseen by The Arts Commission’s Art in Public Places Committee. The Arts Commission and the Arts in Public Places Program was created and duties established in Chapter 167 of the Toledo Municipal Code. One of the requirements is to develop an annual Municipal Art Plan, which is a prioritized list of art projects, that is approved by the Arts Commission and subsequently by the Toledo City Plan Commission. Chapter X, Section 190 of the Toledo City Charter grants the Plan Commission power to control the design and location of works of art which are, or may become, the property of the City.

The Arts Commission has submitted a request for review of the relocation of the public art piece, Kabuki Dancer, since the need to modify it’s location has fallen between the review and approval process of the annual Municipal Art Plan. Originally installed in 1984, the large sculpture was located along the Madison Avenue axis of Levis Square. As noted in the 2024 Toledo Municipal Art Plan, the sculpture was removed from the site to accommodate repairs to Toledo Edison lines that were damaged as a result of work underway to update Levis Square. The recent updates to Levis Square will not allow for the reinstallation of the sculpture and therefore needs to be relocated.

Potential sites for the structure were reviewed by a sub-committee that was established through the Art in Public Places Committee. Their goal was to find another City of Toledo owned location in downtown, while ensuring that the sculpture can be seen from multiple viewpoints. Boeschenstein Park was identified as a prime location for the sculpture. Boeschenstein Park is located east of Summit Street between Monroe Street and Lafayette Street. Swan Creek is to the east of the Park. The Park has walking paths and seating areas throughout. The Kabuki Dancer sculpture is proposed to be located at Washington and Summit Streets. The sculpture will serve as a “bookend” with the Major Ritual sculpture, which was relocated to the north end of Boeschenstein Park in 2017. Swan Waves, a landscape installation by artist Athena Tacha, is also located in the Park.

STAFF ANALYSIS (cont'd)

2015 Toledo Strategic Plan for Arts and Culture

The 2015 Toledo Strategic Plan for Arts and Culture establishes ten (10) strategic objectives that outline a plan of action to support arts and cultural development. Objective 10 is the Downtown & Maumee River - Downtown Toledo and the Maumee Riverfront will be vibrant and cohesive arts and cultural center. Strategy 10D is a long-term strategy to use art installations as a way to use new or strategic Downtown and waterfront space. The proposed location of the Kabuki Dancer sculpture is within Downtown in Boeschstein Park, which is west of Swan Creek. The sculpture will be located at Washington & Summit Streets and will provide not only visual interest in the Park as a pedestrian, but also as you approach the intersection by car.

STAFF RECOMMENDATION

The staff recommends that the Toledo City Plan Commission **approve** M-2-25, Special Study to Modify Location of Public Art, for the following **two (2) reasons**:

- 1. The proposed relocation is consistent with the 2015 Toledo Strategic Plan for Arts and Culture; and
- 2. The proposed relocation site is still in Downtown within a few blocks of the original site, and the siting of the sculpture ensures that it can be seen from multiple viewpoints.

MUNICIPAL ART PLAN
 TOLEDO CITY PLANNING COMMISSION
 REF: M-2-2025
 DATE: March 13, 2025
 TIME: 2:00 P.M.

LK
 One (1) sketch & Exhibit A follow

SCULPTURE LOCATIONS

M-2-25

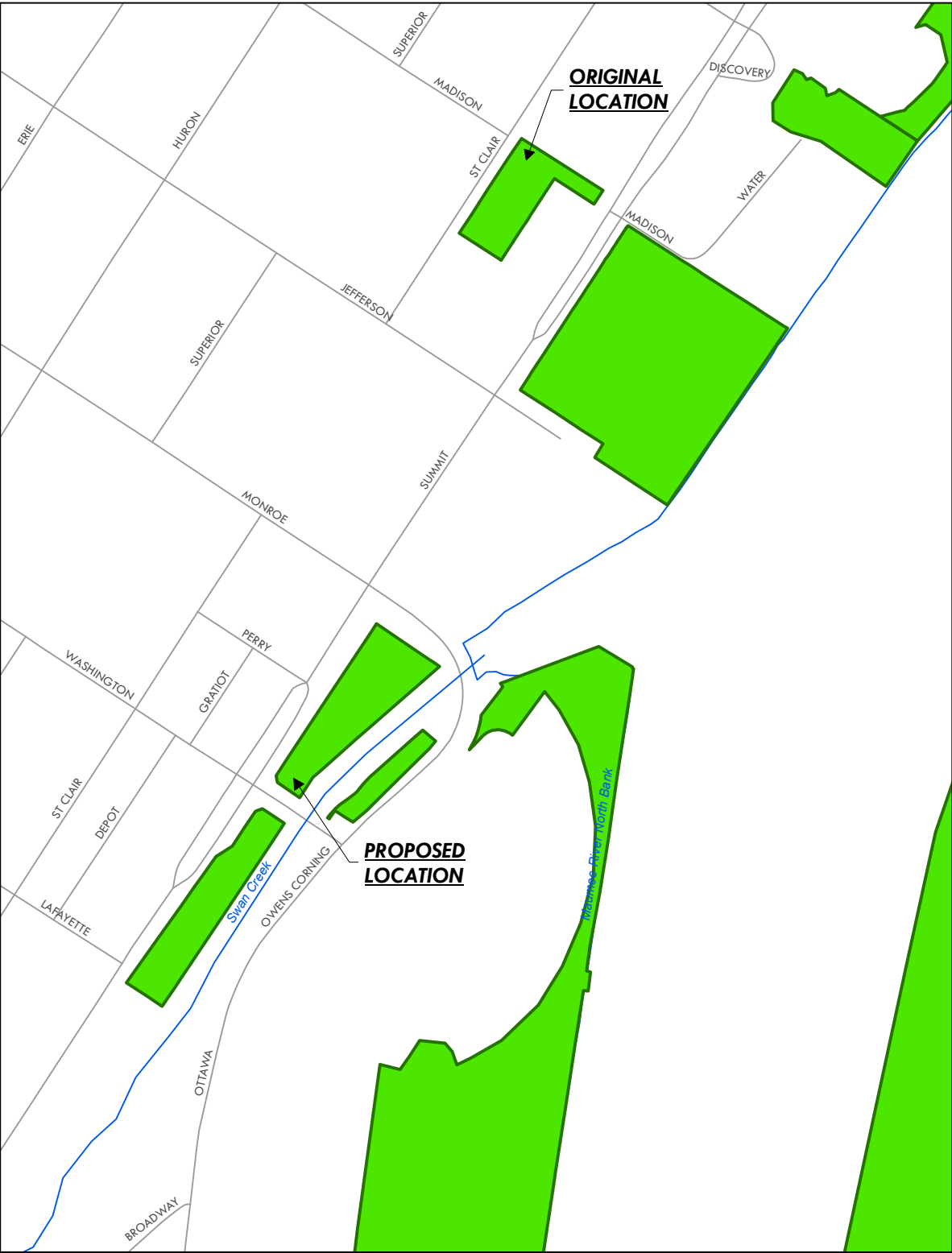


EXHIBIT A



Kabuki Dancer, Jerry Peart, 1984
Original Location - Levis Square Park (1984 - 2024)

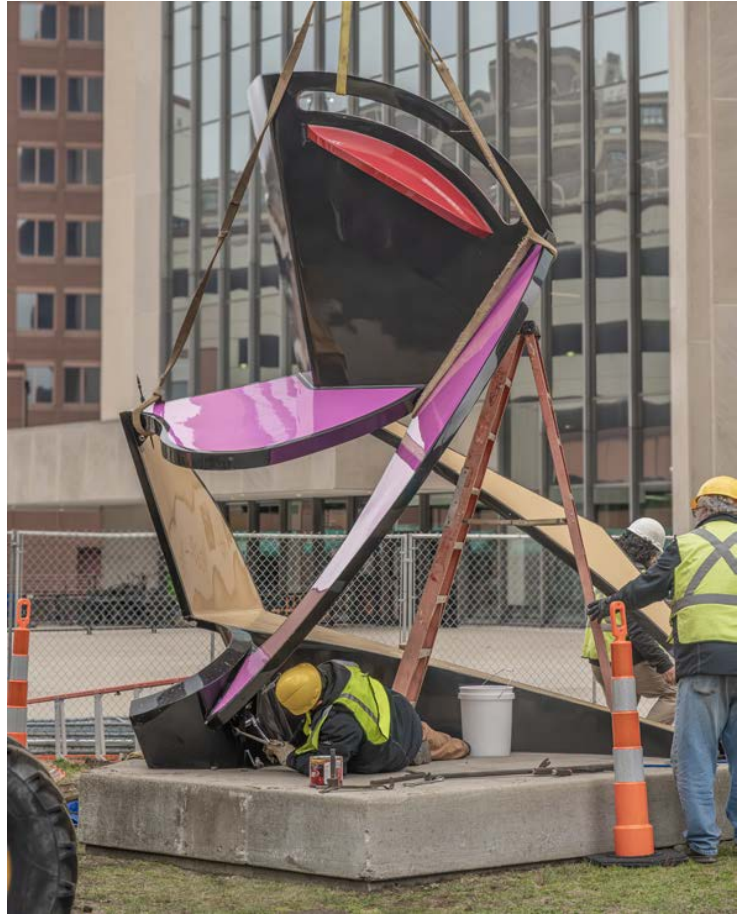


Aerial photo c. 2003

**KABUKI DANCER
LEVIS SQUARE PARK**

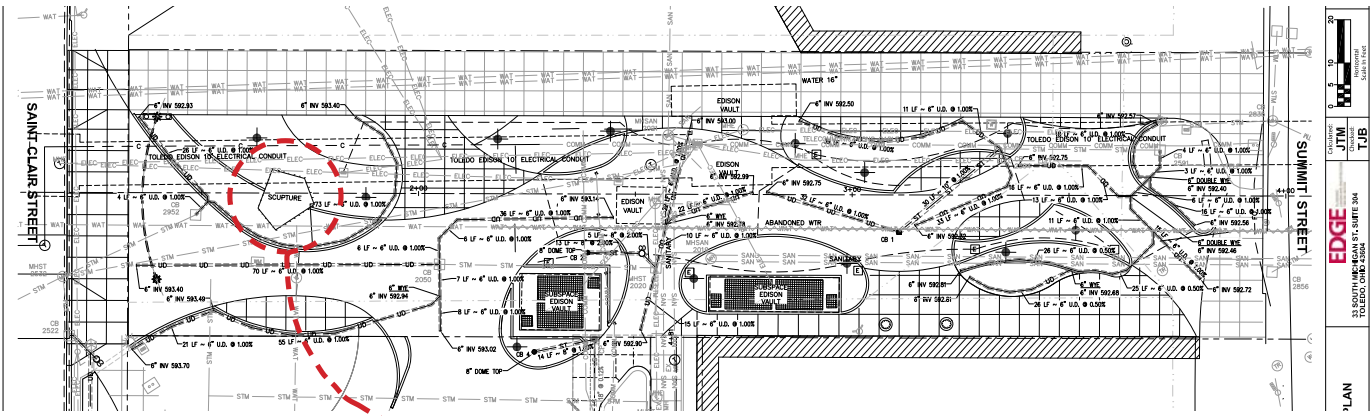
EXHIBIT A

Sculpture removed spring 2024 to accommodate repairs to Toledo Edison vault beneath sculpture base, as well as repairs and repainting to the sculpture itself.



**KABUKI DANCER
REMOVAL / LEVIS SQUARE UPDATES**

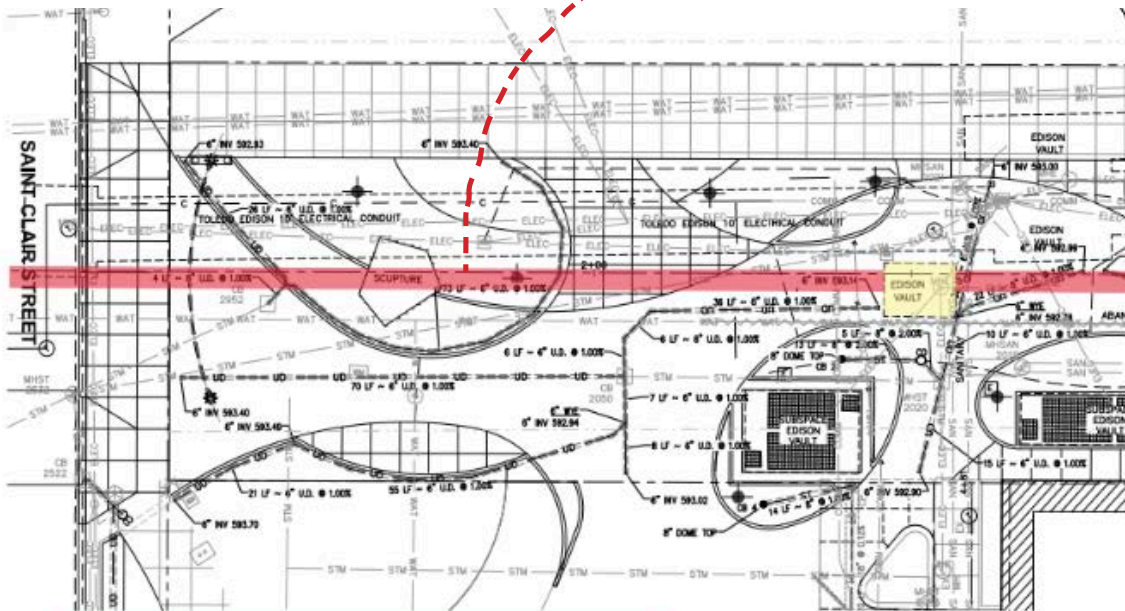
EXHIBIT A



Site utilities plan

prior proposed sculpture location

new Toledo Edison vault eliminates proposed site



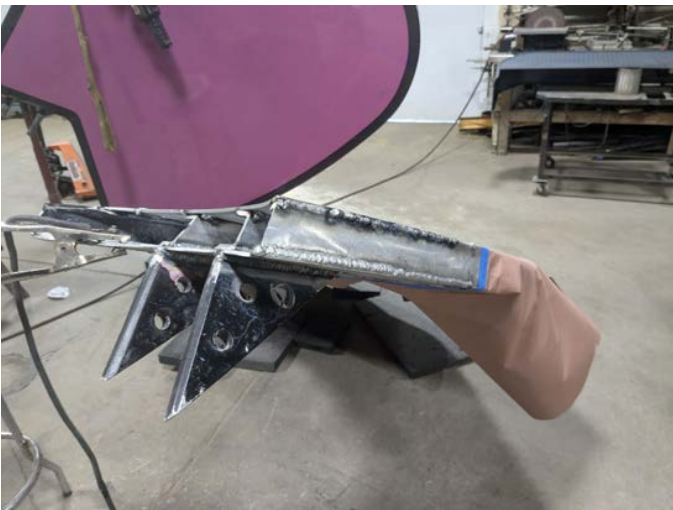
TOLEDO EDISON TO INSTALL NEW DUCT BANK. SECTION OF EXISTING DUCT WILL BE REMOVED AND NEW PLACED OVER TOP. RED LINE INDICATES EXISTING AND NEW PORTION OF DUCT.

SITE UTILITY PLAN
SCALE = 1:10

APPROX SIZE OF NEW DUCT BANK
30" HEIGHT X 44" WIDTH

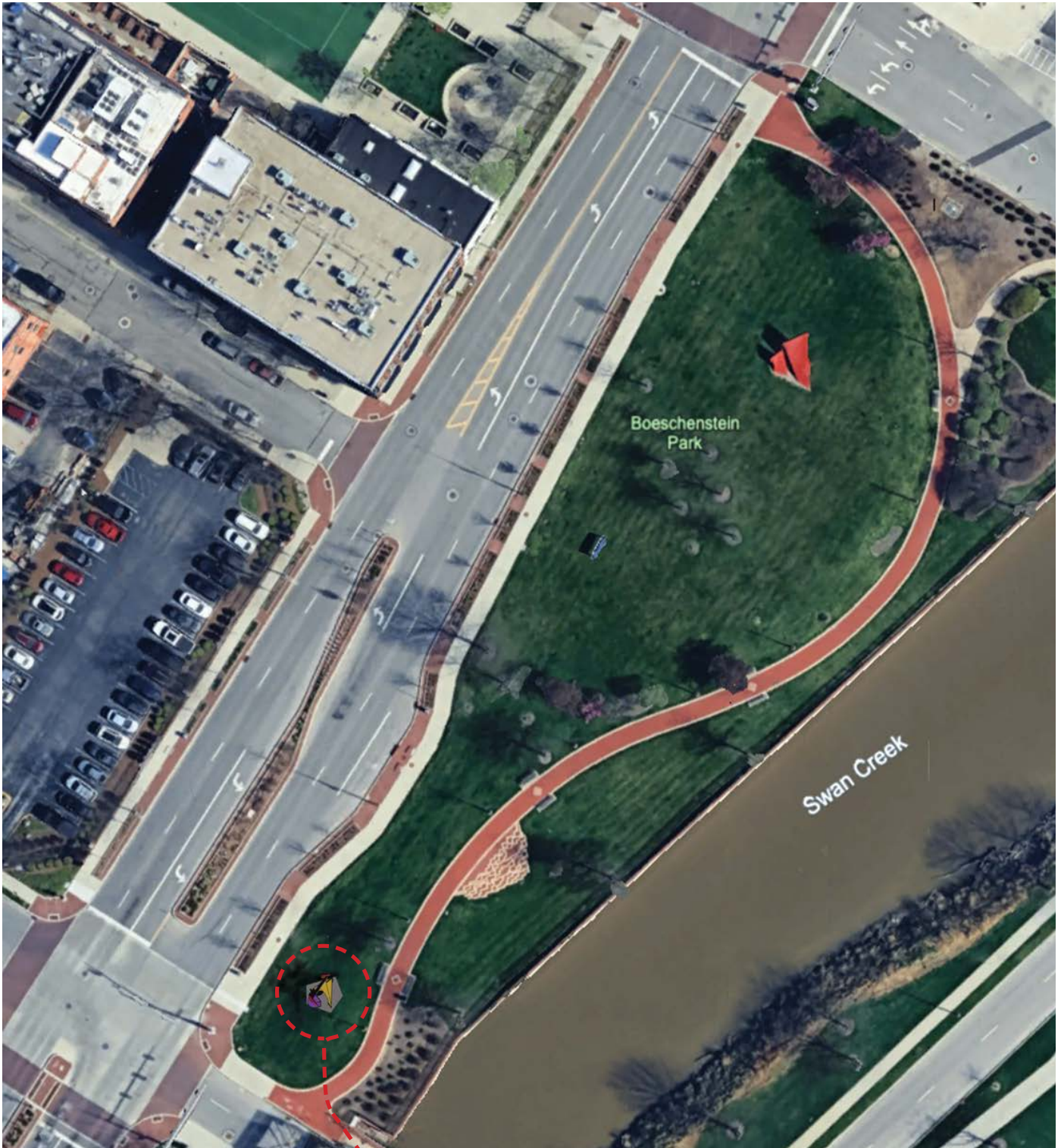
EXHIBIT A

Sculpture currently undergoing repairs, repainting planned for spring 2025



**KABUKI DANCER
CONSERVATION**

EXHIBIT A



Boeschstein Park

proposed site

KABUKI DANCER
PROPOSED RELOCATION

EXHIBIT A

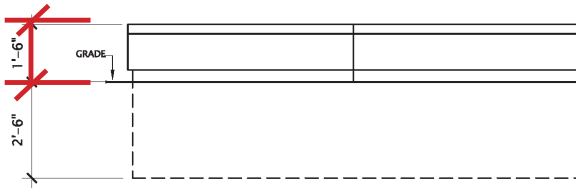
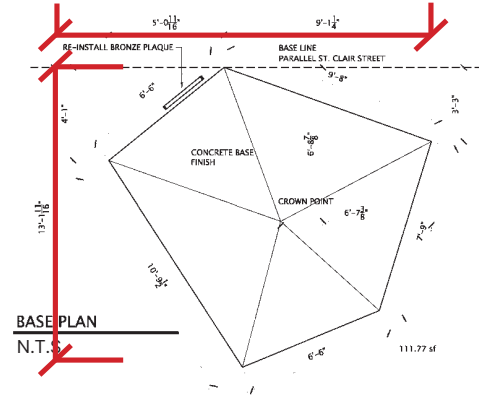


sculpture:
12'-6" tall

total height:
14'-0"

base: 1'-6"
above grade

base:
13'-11¹¹/₁₆" W X
14'-11¹⁵/₁₆" L X
1'-6" H



ELEVATION
N.T.S.



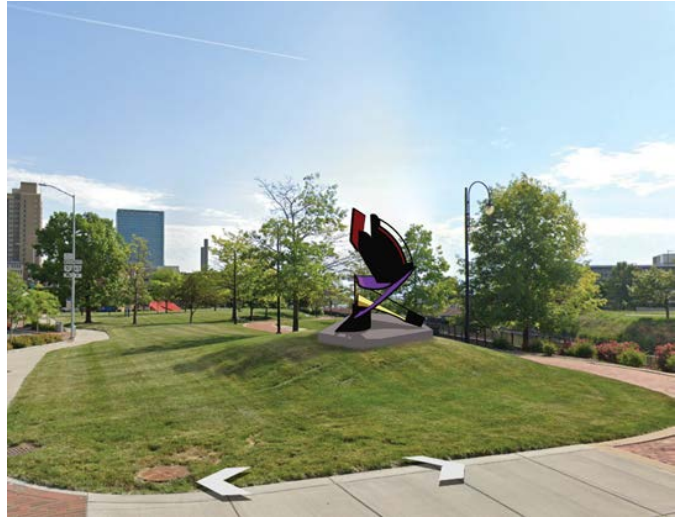
approx. 50'

Washington st.
entrance: 24'

Site dimensions / setbacks

**KABUKI DANCER
SITE / SCULPTURE DIMENSIONS**

EXHIBIT A



**KABUKI DANCER
PROPOSED SITE RENDERINGS**