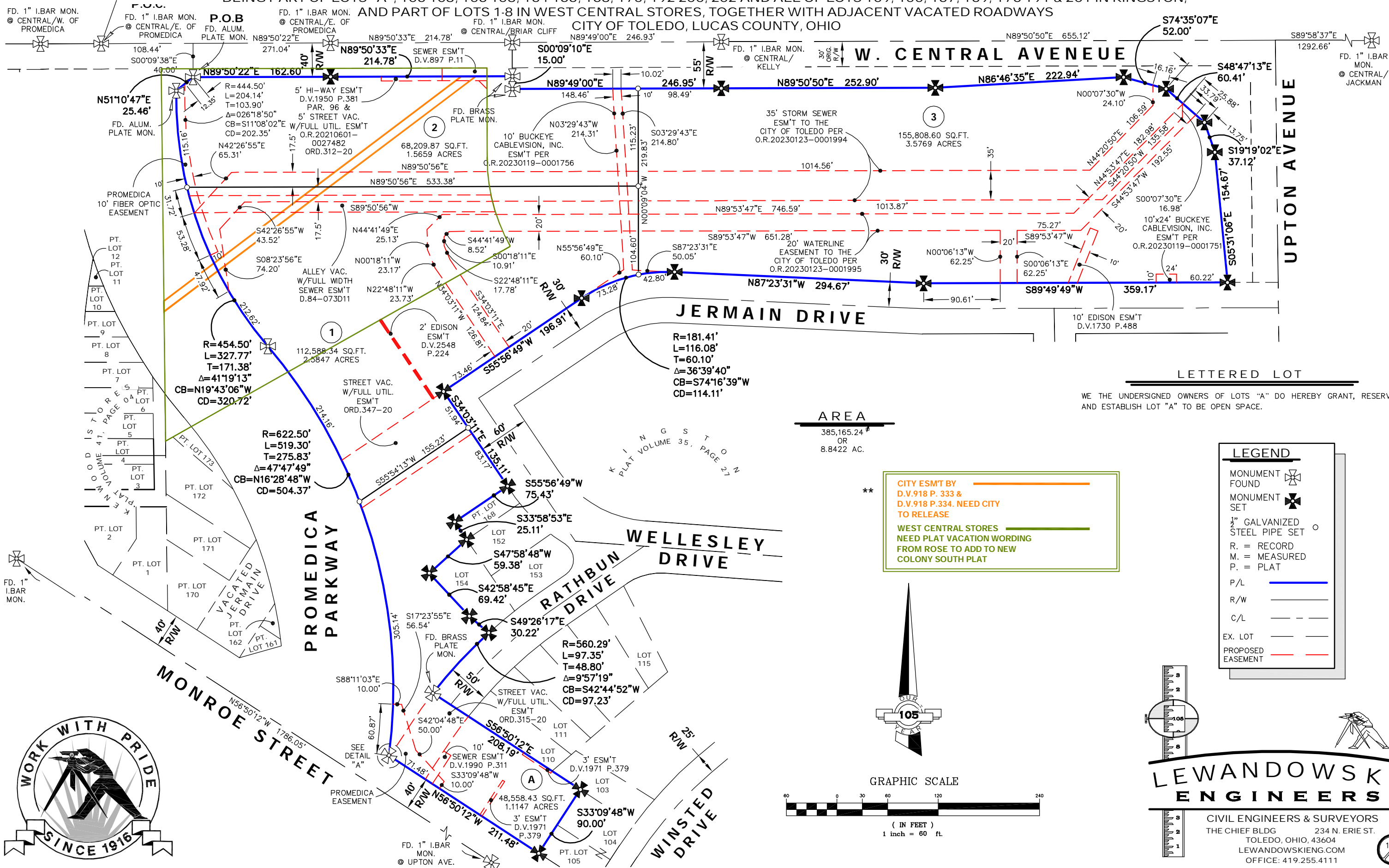


(Easements to be Released in Orange)

# COLONY SOUTH

BEING PART OF LOTS "A", 106-108, 156-158, 164-166, 168, 175, 192-200, 202 AND ALL OF LOTS 109, 155, 167, 169, 176-191 & 201 IN KINGSTON, AND PART OF LOTS 1-8 IN WEST CENTRAL STORES, TOGETHER WITH ADJACENT VACATED ROADWAYS CITY OF TOLEDO, LUCAS COUNTY, OHIO



WE THE UNDERSIGNED OWNERS OF LOTS "A" DO HEREBY GRANT, RESERVE AND ESTABLISH LOT "A" TO BE OPEN SPACE.

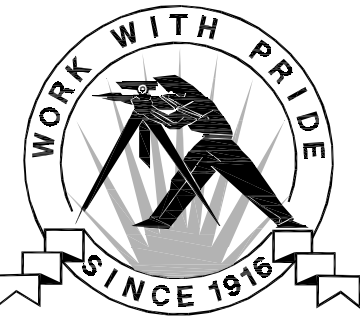
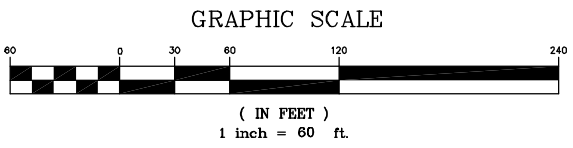
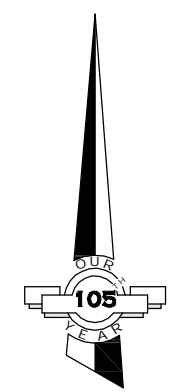
**AREA**  
 385,165.24  $\pm$   
 OR  
 8.8422 AC.

**CITY ESMT BY**  
 D.V.918 P.333 &  
 D.V.918 P.334. NEED CITY  
 TO RELEASE

**WEST CENTRAL STORES**  
 NEED PLAT VACATION WORKING  
 FROM ROSE TO ADD TO NEW  
 COLONY SOUTH PLAT

**LEGEND**

MONUMENT FOUND	⊕
MONUMENT SET	⊗
1/2" GALVANIZED STEEL PIPE SET	○
R. = RECORD	
M. = MEASURED	
P. = PLAT	
P/L	— (Blue line)
R/W	— (Black line)
C/L	- - - (Dashed line)
EX. LOT	— (Thin black line)
PROPOSED EASEMENT	— (Orange line)



**LEWANDOWSKI ENGINEERS**

CIVIL ENGINEERS & SURVEYORS  
 THE CHIEF BLDG 234 N. ERIE ST.  
 TOLEDO, OHIO, 43604  
 LEWANDOWSKIENG.COM  
 OFFICE: 419.255.4111



You created this PDF from an application that is not licensed to print to novaPDF printer (<http://www.novapdf.com>)