

Application for DORA Expansion from Mayor Wade Kapszukiewicz : Downtown Outdoor Refreshment Area

**Presented by ConnecToledo the Downtown Toledo Development Corporation,
the Convention and Visitor's Bureau**

and the Office of the Mayor of the City of Toledo, Wade Kapszukiewicz

Contents:

Overview

Specific Boundaries of The Area, Including Street Addresses

The Number, Spacing, and Type of Signage Designating The Area

The Hours of Operation for The Area

The Number of Personnel Needed to Ensure Public Safety in The Area

A Sanitation Plan That Will Help Maintain the Appearance and Public Health of The Area, Number of Personnel Needed to Execute Sanitation Plan

A Requirement that Beer and Intoxicating Liquor Be Served Solely in Plastic Bottles or Other Plastic Containers in The Area

Alcohol Establishments and Letters of Participation

Rules of The Area

Official ORA Cup and Design

Positive Economic Impacts

Overview

The Office of the Mayor of the City of Toledo, ConnectToledo Downtown Toledo Development Corporation and the Convention and Visitor's Bureau petition Toledo City Council to approve and enact the Downtown Outdoor Refreshment Area (The Area or ORA), in accordance with Section 4301.82 of the Ohio Revised Code and Ohio Substitute House Bill 47. Council approval would create an Outdoor Refreshment Area in greater Downtown Area exclusive of the Uptown Area according to the attached map, meeting or exceeding all of the requirements of ORC 4301.82, for the cultural and economic betterment of the businesses, residents and property owners within The Area, as well as the whole of Toledo by further establishing the area as a destination for entertainment, culture and activity.

ConnectToledo and the Convention and Visitor's Bureau has strong experience in providing adequate security, public health measures and leadership for large and small events held within the aforementioned boundaries and would use that experience to manage and enforce the rules and administration of The Area. Examples include several charity pub crawls each year, Opening Day of both the Toledo Mud Hens and Toledo Walleye seasons, outdoor concerts, summer evenings, and other events at the Huntington Center. ConnectToledo and the Convention and Visitor's Bureau and many neighborhood stakeholders are very confident that this experience, and our commitment to the overall advancement of downtown Toledo, is the perfect foundation of skills to ensure appropriate administration of the proposed Outdoor Refreshment Area.

As outlined in this Petition, ConnectToledo and the Convention and Visitor's Bureau will be working with the Mayor's office, Toledo City Council, Safety, Sanitation, and Transportation officials to ensure a safe, professional implementation of the Outdoor Refreshment Area. Through ongoing communication with all affected City Departments, ConnectToledo and the Convention and Visitor's Bureau will constantly reassess security and sanitation needs, and make adjustments as necessary, as permitted in ORC 4301.82. As required by ORC 4301.82 (B)(1)(a) the proposed expanded DORA area does not exceed three hundred twenty contiguous acres. Also, the proposed expanded DORA area in accordance with ORC 4301.82(B)(3) will encompass not fewer than four qualified liquor permit holders.

ORC 4301.82(B)(1), 4301.82(B)(1)(a), and 4301.82(F)(1)(a)

Specific Boundaries of The Area, Including Street Addresses



Source: ConneCToledo

Boundary Description:

Preamble:

This legal description is for the boundaries of the Designated Outdoor Refreshment Area in downtown Toledo.

Legal description: DORA Revision

Being various lots in the downtown area of Toledo in Lucas county Ohio bounded and described as follows:

Parcel 1

Commencing at the intersection of the centerline of Ottawa Street and the centerline of Clayton Street. Said point being the True Point of Beginning.

Thence North 82 degrees, 22 minutes, 48 seconds West, along the centerline of Clayton Street, a distance of 107.88 feet to a point.

Thence North 62 degrees, 51 minutes, 00 seconds West, along the centerline of Clayton Street, a distance of 1,374.84 feet to a point on the centerline of Swan Creek.

Thence South 33 degrees, 43 minutes, 12 seconds West, along the centerline of Swan Creek, a distance of 23.92 feet to a point.

Thence North 57 degrees, 49 minutes, 12 seconds West, a distance of 340.41 feet to a point on the centerline of Erie Street.

Thence North 32 degrees, 30 minutes, 00 seconds East, along the centerline of Erie Street, a distance of 1,108.70 feet to a point on the centerline of Lafayette Street.

Thence North 57 degrees, 41 minutes, 24 seconds West, along the centerline of Lafayette Street, a distance of 615.81 feet to a point on the centerline of Michigan Street.

Thence North 32 degrees, 16 minutes, 12 seconds East, along the centerline of Michigan Street, a distance of 991.04 feet to a point on the southeasterly prolongation of the southwest line of Lot 549 in Port Lawrence Division.

Thence North 57 degrees, 40 minutes, 12 seconds West, along the southwest line of lots 549 and 566 and the northwesterly prolongation of lot 566, all being in Port Lawrence Division, a distance of 281.29 feet to a point on the centerline of 10th Street.

Thence North 32 degrees, 59 minutes, 24 seconds East, along the centerline of 10th Street, a distance of 1,275.95 feet to a point on the centerline Madison Avenue.

Thence South 57 degrees, 40 minutes, 48 seconds East, along the centerline of Madison Avenue, a distance of 557.26 feet to a point on the centerline of Ontario Street.

Thence North 32 degrees, 22 minutes, 48 seconds East, along the centerline of Ontario Street, a distance of 545.94 feet to a point on the centerline of Adams Street.

Thence South 56 degrees, 31 minutes, 12 seconds East, along the centerline of Adams Street, a distance of 319.11 feet to a point on the centerline of Erie Street.

Thence North 32 degrees, 47 minutes, 24 seconds East, along the centerline of Erie Street, a distance of 549.68 feet to the intersection of a line that is parallel with and 55.52 feet distant from the centerline of Jackson Street.

Thence South 57 degrees, 23 minutes, 24 seconds East, along a line that is parallel with and 55.52 feet distant from the centerline of Jackson Street, a distance of 1,000.05 feet to a point on the centerline of Summit Street.

Thence North 31 degrees, 46 minutes, 48 seconds East, along the centerline of Summit Street, a distance of 694.70 feet to a point on the centerline of Cherry Street, said point also being point "M".

Thence from point "M" South 33 degrees, 19 minutes, 12 seconds East, along the centerline of Cherry Street, a distance of 667.74 feet to a point at the intersection of the centerline of Cherry Street and the shoreline of the Maumee River, said point also being point "N".

Thence from point "N" South 53 degrees, 40 minutes, 17 seconds West, along the shoreline of the Maumee River, a distance of 266.37 feet to a point.

Thence South 41 degrees, 31 minutes, 12 seconds West, along the shoreline of the Maumee River, a distance of 355.43 feet to a point.

Thence South 33 degrees, 43 minutes, 48 seconds West, along the shoreline of the Maumee River, a distance of 1,099.55 feet to a point.

Thence South 56 degrees, 49 minutes, 12 seconds West, along the shoreline of the Maumee River, a distance of 622.33 feet to a point on the centerline of Owens-Corning Parkway.

Thence South 20 degrees, 55 minutes, 48 seconds East, along the centerline of Owens-Corning Parkway, a distance of 83.44 feet to a point.

Thence South 10 degrees, 28 minutes, 12 seconds West, along the centerline of Owens-Corning Parkway, a distance of 180.27 feet to a point.

Thence South 47 degrees, 48 minutes, 00 seconds West, along the centerline of Owens-Corning Parkway, a distance of 357.01 feet to a point at the intersection of Washington Street, Ottawa Street and Owens-Corning Parkway.

Thence South 39 degrees, 06 minutes, 00 seconds West, along the centerline of Ottawa Street, a distance of 377.16 feet to a point.

Thence South 21 degrees, 52 minutes, 48 seconds West, along the centerline of Ottawa Street, a distance of 177.55 feet to a point.

Thence South 12 degrees, 44 minutes, 24 seconds West, along the centerline of Ottawa Street, a distance of 314.24 feet to a point.

Thence South 04 degrees, 38 minutes, 24 seconds West, along the centerline of Ottawa Street, a distance of 167.64 feet to a point.

Thence South 05 degrees, 41 minutes, 24 seconds West, along the centerline of Ottawa Street, a distance of 968.47 feet to a point at the intersection of Clayton Street, said point being the True Point of Beginning.

Together with the following described parcel: Old Bag of Nails:

Lot 1 in the Marina District Deux, as is recorded in the Lucas County Official Record 20180724-0031712.

Together with the following described parcel: International Park Piece:

Commencing from point "N".

Thence South 41 degrees, 30 minutes, 00 seconds East, along the centerline of Cherry Street also known as Main Street, a distance of 952.70 feet to a point on the shoreline of the Maumee River, said point being the True Point of Beginning.

Thence continuing South 41 degrees, 30 minutes, 00 seconds East, along the centerline of Cherry Street also known as Main Street, a distance of 374.45 feet to a point at the intersection of Boers-Boyer Way and Main Street.

Thence South 36 degrees, 46 minutes, 12 seconds West, along the centerline of Boers-Boyer Way, a distance of 380.73 feet to a point.

Thence South 44 degrees, 23 minutes, 24 seconds West, along the centerline of Boers-Boyer Way, a distance of 225.33 feet to a point.

Thence South 31 degrees, 07 minutes, 48 seconds West, along the centerline of Boer-Boyer Way, a distance of 54.63 feet to a point.

Thence South 20 degrees, 32 minutes, 24 seconds West, along the centerline of Boers-Boyer Way, a distance of 299.06 feet to a point.

Thence South 33 degrees, 10 minutes, 12 seconds West, along the centerline of Boers-Boyer Way, a distance of 180.04 feet to a point.

Thence South 45 degrees, 59 minutes, 24 seconds West, along the centerline of Boers-Boyer Way, a distance of 252.39 feet to a point.

Thence South 26 degrees, 25 minutes, 12 seconds West, along the centerline of Boers-Boyer Way, a distance of 1,139.74 feet to a point.

Thence North 77 degrees, 47 minutes, 24 seconds West, a distance of 427.58 feet to a point on the shoreline of the Maumee River.

Thence North 10 degrees, 40 minutes, 48 seconds East, along the shoreline of the Maumee River, a distance of 316.42 feet to a point.

Thence North 22 degrees, 39 minutes, 36 seconds East, along the shoreline of the Maumee River, a distance of 229.98 feet to a point.

Thence North 36 degrees, 19 minutes, 48 seconds East, along the shoreline of the Maumee River, a distance of 2,242.28 feet to a point on the centerline of Cherry Street also known as Main Street, said point being the True Point of Beginning.

Vistula Corridor:

Together with the following described parcel: Vistula Summit Corridor Piece

Preamble: Being a strip of land 150 feet wide lying 75 feet on each side of the following centerline.

Commencing at the intersection of the centerline of Summit Street and the centerline of Cherry Street also being point "M".

Thence North 56 degrees, 54 minutes, 00 seconds East, a distance of 467.95 feet along the centerline of Summit Street to a point.

Thence North 54 degrees, 18 minutes, 36 seconds East, a distance of 3,689.04 feet along the centerline of Summit Street to a point of termination at the centerline of Bush Street.

Source: ConnecToledo

Parcels Included within the Boundary:

Parcels included within the boundary are found at the end of the document

ORC 4301.82(F)(1)(b)

Number, Spacing, and Type of Signage Designating The Area

ConnectToledo in cooperation with The City of Toledo will determine the number and placement of signs and street markings. The signs will be privately funded and installed by The City of Toledo in a style consistent with standard City of Toledo signage, necessary to adequately designate The Area:

ORC 4301.82(F)(1)(c)

Hours of Operation for The Area

Monday through Sunday 12:00pm to 1:00am (Last ORA sales)

ALL ORA beverages MUST be disposed of by 2:30am.

ORC 4301.82(B)(5) and 4301.82(F)(1)(d)

Number of Personnel Needed to Ensure Public Safety in The Area

In consultation with Deputy Chief Mike Troendle it has been determined that a minimum of two (2) persons are necessary to adequately monitor, and maintain situational awareness of, the proposed Area.

At the commencement of the ORA, The Toledo Police Department commits to providing on-duty resources in the form of two officers to patrol The Area during ORA Hours of Operation. This is not an open-ended commitment and shall be tailored to be adequate and sufficient for public safety in an efficient, ongoing basis.

It is understood that these officers' first responsibility is to respond to calls for service or reported crime, whether or not those calls are within The Area.

It is also understood that The Area's primary security mechanism, as described in Contracted Security, will be executed by ConnecToledo, especially during the initial implementation of the ORA and during larger scale special events.

This security plan will be reviewed on an ongoing basis, and may be updated at any time, but only with Toledo Police Department, Toledo City Council, and ConnecToledo for coordination and approval, to ensure public safety at all times is both sufficient and adequate.

Contracted Security:

It is understood that ConnecToledo will contract for Ambassadors who are all licensed security guards though the State of Ohio. It is also understood that contracted security detail personnel, depending on the event and the anticipated need, may consist of on-duty, sworn officers, off-duty sworn officers, non-sworn security personnel, or a hybrid detail containing some or all of the above. Security detail will be designed per event and agreed upon by ConnecToledo, the Convention and Visitor's Bureau and the TPD. It is understood private events and participants are responsible for their own security.

Security Plan Review:

ConnecToledo will meet with the TPD no fewer than two (2) times annually and at any time TPD requests additional meetings, to review, and adjust if necessary, the security plan to ensure public safety and security are maintained. The first such meeting will take place no more than thirty (30) days after the initial implementation of the ORA. It is understood that the general composition of this security plan, with approval by Toledo City Council, can be altered or improved at any time.

ORC 4301.82(B)(5), ORC 4301.82(F)(1)(e), and ORC 4301.82(F)(1)(f)

Sanitation Plan to Maintain the Appearance and Public Health of The Area

Trash Receptacles:

Trash receptacles will be placed at locations near a participating pub and in areas with a high volume of pedestrians. Connectoledo and the Convention and Visitor's Bureau shall be responsible for servicing all additional trash receptacles that are not already the responsibility of the City of Toledo.

Trash receptacles within the Area, north of Monroe St., are currently serviced by the City of Toledo. The City of Toledo will continue to service the trash receptacles within the Downtown Assessment District. Trash receptacles will be serviced as necessary to maintain a clean environment.

General Litter and Debris:

Maintaining a clean environment within the Area is paramount and will include daily pickup up of litter and debris on sidewalks. As with servicing trash receptacles, this maintenance is currently provided within the area, north of Monroe St., by DTID, and will be contracted for south of Monroe St. by Connectoledo and The Convention and Visitor's Bureau.

ORC 4301.82(B)(2), ORC 4301.82(B)(4)

Neighborhood Profile and Support

ORC 4301.82 (B)(2) A general statement of the nature and types of establishments located within the proposed outdoor refreshment area:

Downtown Toledo, particularly within the Area, has undergone tremendous change over the last two decades. Anchored by Fifth Third Field, the Huntington Center and the Seagate Centre is an urban, mixed-use neighborhood unlike any other in Toledo. The former Commodore Perry Hotel, Seyfang Bakery and Lasalle & Koch department store are just a few of the numerous warehouses and other retail and commercial buildings that have been reclaimed and converted to residential, mixed-use or live-work space. In addition, the area boasts retail shops, restaurants and bars, professional service businesses, numerous artist studios and galleries,

banks, a brewery, lodging and service industry businesses. The Area has become a sought-after place to live and work, and it continues to grow and improve.

ORC 4301.82 (B)(4): Evidence that the uses of land within the proposed outdoor refreshment area are in accord with the master zoning plan or map of the municipal corporation or township

Connectoledo and the Convention and Visitor's Bureau also believes in aligning our mission with the leaders and organizations already invested in our region and our neighborhood. The area is within Entertainment Districts established by City Council, who specifically requested the State of Ohio allow additional liquor permits within the districts to spur development of bars, restaurants and other entertainment venues. Additionally, the Toledo 20/20 Plan gives recommendations for the Area that directly correlate to development of an Open Refreshment Area.

Completed in 2013, the Toledo 20/20 Plan makes several recommendations for Downtown including, in Section 167 on page 3-32: "Creating entertainment and niche commercial development."

The plan goes on to identify Activity as one of three major components on which effort must be focused, and identifies three groups of people that contribute to Downtown activity, and whose increased contribution must be cultivated; those employed Downtown, those living in or near Downtown and those who live outside Downtown but make it a destination for entertainment, dining or shopping.

The plan suggests, "[s]teps must be taken to draw more workers Downtown...to attract new businesses...and specially to keep those who are Downtown today. Efforts must be redoubled with more incentives..."

The plan further states that, "One key to revitalizing a downtown core is an aggressive plan for increasing the number of downtown residents..."

Finally, the plan says that for those living outside of Downtown for whom it's a destination for dining, entertainment and shopping, "...this market must be tapped to foster sustainable revitalization."

Establishment of the Downtown Open Refreshment Area will have a positive effect on moving closer to the vision established by the Toledo 20/20 Plan for Downtown.

ORC 4301.62(C)(7)

Rules of The Area

Rules of Ohio Substitute House Bill 47:

ORC 4301.62(C)(7)(a):

A person may have in the person's possession an opened container of beer or intoxicating liquor at an outdoor location within an outdoor refreshment area created under section 4301.82 of the Ohio Revised Code if the opened container of beer or intoxicating liquor was purchased from a qualified permit holder to which both of the following apply:

- (i) The permit holder's premise is located within the outdoor refreshment area.
- (ii) The permit held by the permit holder has an outdoor refreshment area designation.

ORC 4301.62(C)(7)(b):

Outdoor Refreshment Area Participants may NOT:

- (i) Enter the premises of an establishment within an outdoor refreshment area while possessing an opened container of beer or intoxicating liquor acquired elsewhere;**
- (ii) Possess an opened container of beer or intoxicating liquor while being in or on a motor vehicle within an outdoor refreshment area.

ORC 4301.82 (F)(1)(g):

ALL beer, wine, or intoxicating liquor must be contained in the Official Cup of the The Area. No other container will be permitted.

Additional Rules Specific to the Downtown ORA:

Only One (1) Official Cup will be permitted at a time per ORA patron.

All ORA beverages must be served in a new, unused Official Cup.

Used Official Cups must be disposed of before entering any establishment in the ORA.

Official Cups will be procured and distributed to participating establishments by ConnecToledo and the Convention and Visitor's Bureau. No other cup may be substituted for the Official Cup.

Assumption of Good Behavior by ORA Patrons:

An ORA Patron can expect to enjoy the Outdoor Refreshment Area without restraint, questioning, or harassment by ORA Security, or any ORA entity:

SO LONG AS that ORA Participant correctly follows all of the Rules of The Area, and maintains a decorum of Good Behavior, free of public drunkenness, property destruction, or any action that disrupts the enjoyment of another ORA Participant, or disrupts any establishment, property owner, resident, or patron within the ORA.

*****Violation of any of these Rules of The Area shall be considered a minor misdemeanor and violators face warnings and/or fines up to \$150.00 in accordance with ORC 4301.62**

ORC 4301.82(F)(1)(g)

Official ORA Cup and Design

The DORA cup will be a unique and easily identifiable Official Cup designed by a professional marketing firm. Official Cups will be able to hold no more than sixteen (16) fluid ounces and will be composed of plastic.

Positive Economic Impacts

Based on the previous success of the ORA downtown, stakeholders are confident that the Downtown Outdoor Refreshment Area will not only enhance the entertainment and cultural appeal of Downtown Toledo as a destination, but it will also serve to enhance economic appeal and make Downtown Toledo and its neighborhoods more attractive to businesses.

Downtown Outdoor Refreshment Area

Eligible Permit Holder Letter of Participation

Should the Owner participate in sale of alcohol under provisions of the ORA, the Owner agrees to fully participate and uphold the rules and specifications described in this Letter and in the Petition, as well as any potential updates to these rules and specifications. The Owner has read the Petition and shall have unfettered opportunity to read and review the Downtown Outdoor Refreshment Area Ordinance, should the ORA be established.

Rules of the Downtown Outdoor Refreshment Area

Rules Specific to Ohio Substitute House Bill 47:

1. ORC 4301.62(C)(7)(a): A person may have in the person's possession an opened container of beer or intoxicating liquor at an outdoor location within an outdoor refreshment area created under section 4301.82 of the Ohio Revised Code if the opened container of beer or intoxicating liquor was purchased from a qualified permit holder to which both of the following apply:

- (i) The permit holder's premise is located within the outdoor refreshment area.
- (ii) The permit held by the permit holder has an outdoor refreshment area designation.

2. ORC 4301.62(C)(7)(b): Outdoor Refreshment Area Participants may NOT:

(i) Enter the premises of an establishment within an outdoor refreshment area while possessing an opened container of beer or intoxicating liquor acquired elsewhere;

(ii) Possess an opened container of beer or intoxicating liquor while being in or on a motor vehicle within an outdoor refreshment area.

3. ORC 4301.82 (F)(1)(g): ALL beer, wine, or intoxicating liquor must be contained in the Official Cup of the Area. No other container will be permitted.

Additional Rules Specific to the Adams Street ORA:

- 4. Only one (1) Official Cup will be permitted at a time per ORA Participant.
- 5. All ORA beverages must be served in a new, unused Official Cup.
- 6. Used Official Cups must be disposed of before entering any establishment in the ORA.

8. Assumption of good behavior by ORA Participants:

An ORA Patron can expect to enjoy the Outdoor Refreshment Area without restraint, questioning, or harassment by ORA Security, or any ORA entity:

SO LONG AS that ORA Participant correctly follows all of the Rules of The Area, and maintains a decorum of good behavior, free of public drunkenness, property destruction or any action that disrupts the enjoyment of another ORA Participant, or disrupts any establishment, property owner, resident, or patron within the ORA.

*****Violation of any of these Rules of The Area shall be considered a minor misdemeanor and violators face warnings and/or fines up to \$150.00 in accordance with ORC 4301.62**

The Owner agrees to assist Downtown Pub Club in properly educating the Owner's service staff completely on the Rules of ORC 4301.82 and the Rules of the Downtown Outdoor Refreshment Area.

The Owner agrees to use the Official ORA Cup.

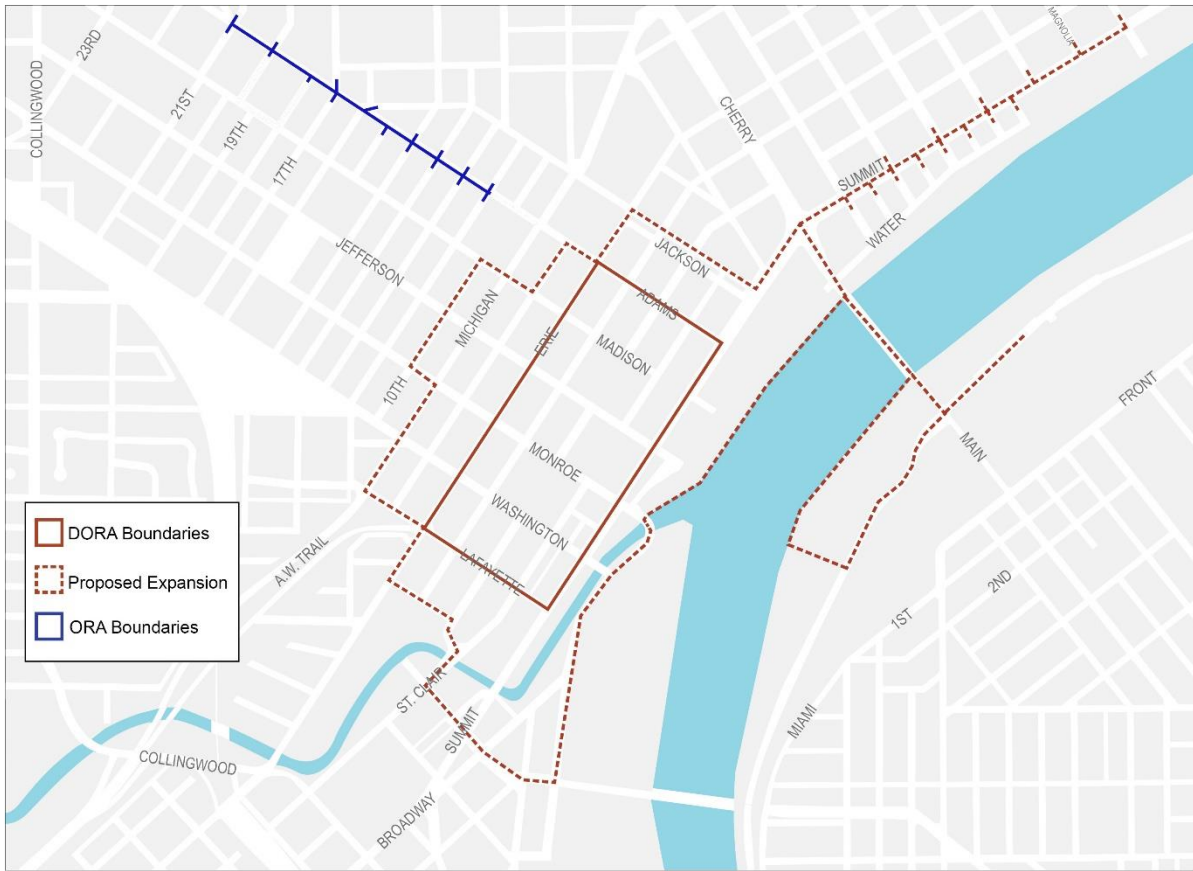
The Owner agrees to their Establishment's participation in the ORA Sanitation Plan and ORA Security Plan.

Alcohol Establishment and Address:

Owner Name Printed:

Owner Signature and Date:

DORA and ORA Expansion Map:



DORA Expansion

Adjacent Parcels

ID	OWNER	ADDRESS	CITY	STATE	ZIP
1157223	CAD PROPERTIES INC AN OHIO CORPORATION	212 WADE ST	TOLEDO	OH	43602
1157291	MAC'S CONVENIENCE STORES LLC A DELAWARE LLC	305 CLAYTON ST	TOLEDO	OH	43602
1217737	BLAIR LEONARD PAUL BISHOPOF THE ROMAN CA	38 S MICHIGAN ST	TOLEDO	OH	43604
1217771	CIOLEK SCOTT ALAN	901 WASHINGTON ST	TOLEDO	OH	43624
1542952	DETROIT HOLDINGS LLC AN OHIO LLC	1119 WATER ST	TOLEDO	OH	43604
1543277	HOLY TRINITY GREEK ORTHODOX CATHEDRAL OF	815 N SUMMIT ST	TOLEDO	OH	43604
1543767	HIGH-TECH TOLEDO PROPERTIES LLC	316 MULBERRY ST	TOLEDO	OH	43604
1543787	SHAFFER LOREN N & DENISE L	1316 N SUPERIOR ST	TOLEDO	OH	43611
1871584	CITY OF TOLEDO	0 OTTAWA ST	TOLEDO	OH	43502
1871585	CITY OF TOLEDO	0 OTTAWA ST	TOLEDO	OH	43602
1157371	PASCHALIS EMMANUEL & JUDY (ORSURVTC)	205 OLIVER ST	TOLEDO	OH	43602
1159964	MANDELL VASQUEZ, INC, AN OH CORP	324 MORRIS ST	TOLEDO	OH	43602
1217664	SAMOS 38 LLC	907 MONROE ST	TOLEDO	OH	43624
1217714	SALVATION ARMY	24 S MICHIGAN ST	TOLEDO	OH	43624
1542511	CONNOR REALTY LLC AN OHIO LIMITED LIABILI	804 N SUMMIT ST	TOLEDO	OH	43604
1542661	GENMIC LLC	912 N SUMMIT ST	TOLEDO	OH	43604
1542953	1119 WATER STREET LLC AN OHIO LLC	1119 WATER ST	TOLEDO	OH	43604
1543214	RUMPF RIVER VIEW LLC	933 N SUMMIT ST	TOLEDO	OH	43604
1543217	FEN ENTERPRISES LLC	927 N SUMMIT ST	TOLEDO	OH	43604
1543651	CEPEDA OFELIO	1028 N SUPERIOR ST	TOLEDO	OH	43604
1543687	TORREY HILL APARTMENTS LLC	316 ELM ST	TOLEDO	OH	43604
1800040	CITY OF TOLEDO		0 TOLEDO	OH	43602
412587	YWCA OF GREATER TOLEDO HOUSING, LLC AN O	1018 JEFFERSON AVE	TOLEDO	OH	43624
852507	BILLSSON LLC AN OHIO LLLC	1401 N SUMMIT ST	TOLEDO	OH	43604
1156617	TERRA REAL I, INC	313 MORRIS ST R	TOLEDO	OH	43602
1217681	MORGAN SERVICE INC	29 N MICHIGAN ST	TOLEDO	OH	43602
1217697	KIMBLE JEFFREY T & BECKETT BAITHER	13 N MICHIGAN ST	TOLEDO	OH	43624
1217854	SAMOS 38 LLC	915 MONROE ST	TOLEDO	OH	43624
1542577	830 N SUMMIT STREET VENTURES LTD AN OHIO	830 N SUMMIT ST	TOLEDO	OH	43604
1543231	JES NWO INC AN OHIO CORPORATION	915 N SUMMIT ST	TOLEDO	OH	43604
1543287	HOLY TRINITY GREEK ORTHODOX CATHEDRAL OF	807 N SUMMIT ST	TOLEDO	OH	43604
1543754	COREY EVELYN S	1230 N SUPERIOR ST	TOLEDO	OH	43604
1880397	KWIK PARKING INC	331 N ONTARIO ST	TOLEDO	OH	43611
1887754	METROPOLITAN PARK DISTRICT OF THE TOLEDO AREA	0 RIVERSIDE DR R	TOLEDO	OH	43608
1899063	CITY OF TOLEDO		0 TOLEDO	OH	43602
412581	YOUNG WOMANS CHRISTIAN ASSOCIATION	1018 JEFFERSON AVE	TOLEDO	OH	43604
412604	MADISON PARTNERS LLC, AN OHIO LIMITED LI	229 10TH ST	TOLEDO	OH	43624
1157377	DFO LEASING LLC	204 OLIVER ST	TOLEDO	OH	43602
1217667	SAMOS 38 LLC	903 MONROE ST	TOLEDO	OH	43624
1217941	REALTY INCOME CORPORAITON	135 10TH ST	TOLEDO	OH	43624
1217974	MOGAN SERVICES, INC A DELCORP	1009 MONROE ST	TOLEDO	OH	43624
1543264	MIDLAND AGENCY OF NORTHWEST OHIO INC TRUSTEE	827 N SUMMIT ST	TOLEDO	OH	43604
1543307	HOLY TRINITY GREEK ORTHODOX CATHEDRAL OF	735 N SUMMIT ST	TOLEDO	OH	43604
1543644	FINN MICHAEL THOMAS	1011 OSTRICH LN	TOLEDO	OH	43604
1543694	BRANDOW ROBERT H	1114 N SUPERIOR ST	TOLEDO	OH	43611
1543757	COREY E S	1232 N SUPERIOR ST	TOLEDO	OH	43604
1547911	TOLEDO BLADE COMPANY	501 N SUPERIOR ST	TOLEDO	OH	43604

1871554	METROPOLITAN PARK DISTRICT OF THE TOLEDO	111	OTTAWA ST	TOLEDO	OH	43604
1887701	METROPOLITAN PARK DISTRICT OF THE TOLEDO AREA	1001	FRONT ST	TOLEDO	OH	43605
412451	MADISON PARTNERS LLC, AN OHIO LIMITED LI	1009	MADISON AVE	TOLEDO	OH	43624
412584	YWCA OF GREATER TOLEDO HOUSING, LLC AN O	1018	JEFFERSON AVE	TOLEDO	OH	43624
1156961	B J KOSMIDER REALTY LLC AN OHIO LIMITED	196	S ST CLAIR ST	TOLEDO	OH	43602
1217661	SAMOS 38 LLC	909	MONROE ST	TOLEDO	OH	43624
1217705	CONSTRUX PROPERTIES LLC AN OHIO LLC	0	N MICHIGAN ST	TOLEDO	OH	43624
1217944	REALTY INCOME CORPORAITON	121	10TH ST	TOLEDO	OH	43624
1542571	830 N SUMMIT STREET VENTURES LTD AN OHIO	826	N SUMMIT ST	TOLEDO	OH	43604
1542744	HORIZON INVESTMENT GROUP,LLC	206	PINE ST	TOLEDO	OH	43604
1543274	MIDLAND AGENCY OF NORTHWEST OHIO INC TRUSTEE	823	N SUMMIT ST	TOLEDO	OH	43604
1543617	TOLEDO HOMES FOR RENT LLC	318	LAGRANGE ST	TOLEDO	OH	43604
1543654	BYRAM PROPERTIES INC AN OHIO CORPORATION	315	ELM ST	TOLEDO	OH	43604
1543697	TORREY HILL APARTMENTS LLC	1116	N SUPERIOR ST	TOLEDO	OH	43604
1547981	TOLEDO BLADE CO	518	JACKSON ST	TOLEDO	OH	43604
1548072	TOLEDO-LUCAS COUNTY PORT AUTHORITY AN	640	JACKSON ST	TOLEDO	OH	43604
1871811	I.B.C. INC AN OHIO CORPORATION	201	S ERIE ST	TOLEDO	OH	43604
412586	YWCA OF GREATER TOLEDO HOUSING, LLC AN O	1002	JEFFERSON AVE	TOLEDO	OH	43624
1156644	TERRA REAL I, INC	313	MORRIS ST	TOLEDO	OH	43602
1157484	B J KOSMIDER REALTY LLC AN OHIO LIMITED	202	S ST CLAIR ST	TOLEDO	OH	43602
1217931	REALTY INCOME CORPORAITON	1001	JEFFERSON AVE	TOLEDO	OH	43624
1217964	KLUGE ERIK R	1004	MONROE ST	TOLEDO	OH	43624
1542521	CONNOR REALTY LLC AN OHIOLIMITED LIABILI	816	N SUMMIT ST	TOLEDO	OH	43604
1543271	MIDLAND AGENCY OF NORTHWEST OHIO INC TRUSTEE	825	N SUMMIT ST	TOLEDO	OH	43604
1543381	CITY OF TOLEDO	610	N SUPERIOR ST	TOLEDO	OH	43609
1547757	UNITED WAY OF GREATER TOLEDO AN OHIO NON	1	STRANAHAN SQ	TOLEDO	OH	43604
1547917	TOLEDO BLADE CO	541	N SUPERIOR ST	TOLEDO	OH	43606
1549171	LUCAS COUNTY COMMISSIONERSBOARD OF	800	ADAMS ST	TOLEDO	OH	43624
1549477	TOLEDO-LUCAS COUNTY PUBLIC LIBRARY	325	N MICHIGAN ST	TOLEDO	OH	43624
1877473	CITY OF TOLEDO	100	MAIN ST	TOLEDO	OH	43605
412585	YWCA OF GREATER TOLEDO HOUSING, LLC AN O	1002	JEFFERSON AVE	TOLEDO	OH	43604
1217397	I.B.C. INC AN OHIO CORPORATION	630	S 11TH ST	TOLEDO	OH	43602
1217704	TOLEDO REPERTOIRE CO	7	N MICHIGAN ST	TOLEDO	OH	43624
1543281	HOLY TRINITY GREEK ORTHODOX CATHEDRAL OF	811	N SUMMIT ST	TOLEDO	OH	43604
1543612	FINN MICHAEL T *	937	OSTRICH LN	TOLEDO	OH	43604
1543717	FULLER DALE & KATHLEEN	317	CHESTNUT ST	TOLEDO	OH	43604
1543751	COREY E S	1228	N SUPERIOR ST	TOLEDO	OH	43604
1544245	MADONNA HOMES APARTMENTS LLC	712	N HURON ST	TOLEDO	OH	43604
1800037	I.B.C. INC AN OHIO CORPORATION	201	S ERIE ST	TOLEDO	OH	43604
1871556	CITY OF TOLEDO	11	OTTAWA ST	TOLEDO	OH	43604
1871914	CITY OF TOLEDO	223	OLIVER ST	TOLEDO	OH	43602
1157287	TLC PROPERTIES INC A LOUISIANA CORPORATI	207	BROADWAY ST	TOLEDO	OH	43602
1157467	A H JAMRA CO	201	S ST CLAIR ST	TOLEDO	OH	43604
1217861	MORGAN SERVICES INC	919	MONROE ST	TOLEDO	OH	43624
1542356	WTOL TELEVISION LLC	222	CHERRY ST	TOLEDO	OH	43604
1542587	840 SUMMIT LLC	840	N SUMMIT ST	TOLEDO	OH	43604
1543114	CANNADY PATRICIA J	314	CHESTNUT ST	TOLEDO	OH	43604
1543121	CANNADY PATRICIA J	312	CHESTNUT ST	TOLEDO	OH	43604
1543284	HOLY TRINITY GREEK ORTHODOX CATHEDRAL OF	809	N SUMMIT ST	TOLEDO	OH	43604

1543373	TOLEDO-LUCAS COUNTY PORT AUTHORITY	610 N SUPERIOR ST	TOLEDO OH	43604
1543647	LUCAS COUNTY LAND REUTILIZATION CORPORATION	1022 N SUPERIOR ST	TOLEDO OH	43604
1543744	CHILDREN'S HEALTH MARKET OF OHIO LLC (TH	1224 N SUPERIOR ST	TOLEDO OH	43604
1549291	KWIK PARKING INC	819 ADAMS ST	TOLEDO OH	43624
412591	MADISON PARTNERS LLC, AN OHIO LIMITED LI	227 10TH ST	TOLEDO OH	43624
1543731	CHILDREN'S HEALTH MARKET OF OHIO LLC (TH	1202 N SUPERIOR ST	TOLEDO OH	43604
412607	MADISON PARTNERS LLC, AN OHIO LIMITED LI	231 10TH ST	TOLEDO OH	43624
1543107	CANNADY PATRICIA J	310 CHESTNUT ST	TOLEDO OH	43604
1543254	CELTIC PROJECTS LLC AN OHIO LLC	311 LOCUST ST	TOLEDO OH	43604
1543721	FLORO BARBARA E	321 CHESTNUT ST	TOLEDO OH	43604
1547974	TOLEDO BLADE CO	522 JACKSON ST	TOLEDO OH	43604
1217181	CARS HOLDING INC	16 LUCAS ST	TOLEDO OH	43602
1543267	MIDLAND AGENCY OF NORTHWEST OHIO INC TRUSTEE	825 N SUMMIT ST	TOLEDO OH	43604
1543761	NOWLAND PATRICK	315 MULBERRY ST	TOLEDO OH	43604
1872103	CENTERIOR PROPERTIES CO AN OH CORP	0 OTTAWA ST	TOLEDO OH	43602
1543747	COREY ALBERT T	1226 N SUPERIOR ST	TOLEDO OH	43604
1542647	GENMIC LLC	900 N SUMMIT ST	TOLEDO OH	43604
1543207	TOLEDO SUMMIT, LLC	937 N SUMMIT ST	TOLEDO OH	43604
1543791	COREY E S	1318 N SUPERIOR ST	TOLEDO OH	43604
1871813	FARMER'S MARKET ASSOCIATION OF TOLEDO	201 S ERIE ST	TOLEDO OH	43604
1542421	WTOL TELEVISION LLC	730 N SUMMIT ST	TOLEDO OH	43604
1217274	ROOT JASON W	41 BELMONT AVE	TOLEDO OH	43602
1543794	LUCAS HOUSING SERVICES CORPORATION	1320 N SUPERIOR ST	TOLEDO OH	43604
1887744	TOLEDO-LUCAS COUNTY PORT AUTHORITY	0 RIVERSIDE DR	TOLEDO OH	43608
412461	MADISON PARTNERS LLC, AN OHIO LIMITED LI	235 10TH ST	TOLEDO OH	43624
1549401	MID AN BANK AN OHIO CHARTERED BANK	800 MADISON AVE	TOLEDO OH	43624

Addresses

Street	Lowest Even	Lowest Odd	Highest Even	Highest Odd
Adams	316	401	624	701
Boers-Boyer Way	0		0	
Broadway	122	101	140	137
Cherry	210		210	
Clayton	0		328	
Depot		21		21
Discovery		1		1
Erie	0	1		
Jefferson	500	313	914	919
Lafayette	416	323	814	625
Madison	406	401	714	919
Main	100		100	
Maritime	2		2	
Market	602		608	
Monroe	0	313	812	919
Morris	236	201	250	247
N Huron	110	9	540	435
N Superior	330	33	502	437
N Erie	2	1	444	123
N Michigan	38	7	220	235
N Ontario	8	25	134	229
N St Clair	2	9	200	435
N Summit	102	21	1338	1337
S Huron	20	23	144	139
S Superior	8	7	140	155
S Erie	14	1	34	147
S Michigan		29		39
S Ontario	20	15	30	61
S St Clair	2	1	128	195
S Summit	176	1	176	175
Ottawa	110		140	
Pine	206		206	
Private	0		0	
Riverside Dr	0		0	
Seagate	4	1	4	1
10th	112		234	
Washington	0	407	814	801
Water	0		1024	
World Trade Center		1		1

ID	OWNER	ADDRESS	CITY	STATE	ZIP
1214907	TRINITY EPISCOPAL CH	316 ADAMS ST	TOLEDO	OH	43604
1214908	TRINITY EPISCOPAL CH	316 ADAMS ST	TOLEDO	OH	43604
1214918	THEATRE BUILDING UNIT ONELLC, AN OHIO LI	401 ADAMS ST	TOLEDO	OH	43604
1214925	THEATRE BUILDING UNIT ONELLC, AN OHIO LI	401 ADAMS ST	TOLEDO	OH	43604
1214926	DOWNTOWN CDC LLC AN OHIO LLC	405 ADAMS ST	TOLEDO	OH	43604
1214920	DOWNTOWN CDC LLC AN OHIO LLC	405 ADAMS ST	TOLEDO	OH	43604
1550660	TOLEDO CULTURAL ARTS CENTER INC	410 ADAMS ST	TOLEDO	OH	43604
1214919	CAD TAVERN INC AN OHIO CORPORATION	411 ADAMS ST	TOLEDO	OH	43604
1215097	CAD TAVERN INC AN OHIO CORPORATION	413 ADAMS ST	TOLEDO	OH	43604
1216527	CITY OF TOLEDO	414 ADAMS ST	TOLEDO	OH	43604
1216534	CITY OF TOLEDO	424 ADAMS ST	TOLEDO	OH	43604
1547862	MACID INC	502 ADAMS ST	TOLEDO	OH	43604
1547861	MACID INC	502 ADAMS ST	TOLEDO	OH	43604
1547867	300 MADISON BUILDING LLC AN OHIO LIMITED	506 ADAMS ST	TOLEDO	OH	43604
1216814	MIMG LXII LASALLE, LLC	513 ADAMS ST	TOLEDO	OH	43604
1548961	M.W.II PROPERTIES, LTD	601 ADAMS ST	TOLEDO	OH	43604
802577	405 N HURON STREET LLC	602 ADAMS ST	TOLEDO	OH	43604
802573	405 N HURON STREET LLC	602 ADAMS ST	TOLEDO	OH	43604
802575	405 N HURON STREET LLC	602 ADAMS ST	TOLEDO	OH	43604
802571	405 N HURON STREET LLC	602 ADAMS ST	TOLEDO	OH	43604
802567	405 N HURON STREET LLC	602 ADAMS ST	TOLEDO	OH	43604
802569	405 N HURON STREET LLC	604 ADAMS ST	TOLEDO	OH	43604
1548977	ADAMS STREET PROPERTIES LLC	606 ADAMS ST	TOLEDO	OH	43604
1548971	COCOVES TASSO C & ATHENA C CO TRUSTEES OF THE	608 ADAMS ST	TOLEDO	OH	43604
1548974	COCOVES TASSO C & ATHENA C CO TRUSTEES OF THE	612 ADAMS ST	TOLEDO	OH	43604
1500013	CRANE DEVELOPMENT LTD AN OHIO LLC	614 ADAMS ST	TOLEDO	OH	43604
1549054	CRANE DEVELOPMENT LTD AN OHIO LLC	614 ADAMS ST	TOLEDO	OH	43604
1549094	COLLINS INVESTMENT PROPERTIES LLC AN OHI	615 ADAMS ST	TOLEDO	OH	43604
1549057	LANDFATHER DORIS	616 ADAMS ST	TOLEDO	OH	43604
1549081	617 ADAMS INVESTMENT LTD AN OHIO LIMITED	617 ADAMS ST	TOLEDO	OH	43604
1549061	E SHOUSER LLC	618 ADAMS ST	TOLEDO	OH	43604
1549064	620 ADAMS STREET LLC A LIMITED LIABILITY	620 ADAMS ST	TOLEDO	OH	43604
1549067	RJS NWO VENTURES LLC	624 ADAMS ST	TOLEDO	OH	43604
1549074	TALON RENOVATIONS LLC AN OHIO LLC	625 ADAMS ST	TOLEDO	OH	43604
1549141	LUCAS COUNTY COMMISSIONER	701 ADAMS ST	TOLEDO	OH	43624
1549232	LUCAS COUNTY COMMISSIONERS	701 ADAMS ST	TOLEDO	OH	43604
1549231	LUCAS COUNTY COMMISSIONER	701 ADAMS ST	TOLEDO	OH	43624
1877483	LOUISVILLE TITLE AGENCY FOR NW OHIO INC	0 BOERS-BOYER WAY	TOLEDO	OH	43605
1877484	LOUISVILLE TITLE AGENCY FOR NW OHIO INC	0 BOERS-BOYER WAY	TOLEDO	OH	43605
1157197	REEDER RONALD D SR	101 BROADWAY ST	TOLEDO	OH	43602
1157194	REEDER RONALD D SR	109 BROADWAY ST	TOLEDO	OH	43602
1157191	MORIARTY JAMES M	113 BROADWAY ST	TOLEDO	OH	43602
1157127	BENNETT ENTERPRISES LLC AN OHIO LLC	116 BROADWAY ST	TOLEDO	OH	43602
1157187	MORIARTY JAMES M	117 BROADWAY ST	TOLEDO	OH	43602
1157184	MORIARTY JAMES M	121 BROADWAY ST	TOLEDO	OH	43602
1157131	BENNETT ENTERPRISES LLC AN OHIO LLC	122 BROADWAY ST	TOLEDO	OH	43602
1157137	BENNETT ENTERPRISES LLC AN OHIO LLC	124 BROADWAY ST	TOLEDO	OH	43602
1157087	BENNETT ENTERPRISES LLC AN OHIO LLC	126 BROADWAY ST R	TOLEDO	OH	43604
1157181	MORIARTY JAMES M	129 BROADWAY ST	TOLEDO	OH	43602
1157177	MORIARTY JAMES M	131 BROADWAY ST	TOLEDO	OH	43602
1157174	MORIARTY JAMES M	133 BROADWAY ST	TOLEDO	OH	43602
1157167	MORIARTY JAMES M	135 BROADWAY ST	TOLEDO	OH	43602
1157161	MORIARTY JAMES M	137 BROADWAY ST	TOLEDO	OH	43602
1157147	BENNETT ENTERPRISES LLC AN OH LLC	140 BROADWAY ST	TOLEDO	OH	43602
1156854	LOUISVILLE TITLE AGENCY FOR N.W. OHIO IN	16 BROADWAY ST	TOLEDO	OH	43602
1100022	LOUISVILLE TITLE AGENCY FOR N.W. OHIO IN	16 BROADWAY ST	TOLEDO	OH	43602
1156764	APPLOCATIONS LLC AN OHIO LLC	27 BROADWAY ST	TOLEDO	OH	43602
1156864	APPLOCATIONS LLC AN OHIO LLC	28 BROADWAY ST	TOLEDO	OH	43602
1156867	APPLOCATIONS LLC AN OHIO LLC	30 BROADWAY ST	TOLEDO	OH	43602
1156874	APPLOCATIONS LLC AN OHIO LLC	32 BROADWAY ST	TOLEDO	OH	43602

1156884	APPOLD PATRICIA J TR	50 BROADWAY ST	TOLEDO OH	43602
1547404	TOLEDO-LUCAS COUNTY PORT AUTHORITY	210 CHERRY ST	TOLEDO OH	43604
1157222	MORIARTY JAMES M	0 CLAYTON ST	TOLEDO OH	43602
1157171	MORIARTY JAMES M	218 CLAYTON ST	TOLEDO OH	43602
1157051	MCATEE RICH & JENNIFER (ORSURVTC)	328 CLAYTON ST	TOLEDO OH	43602
1157071	MCATEE RICH & JENNIFER (ORSURVTC)	328 CLAYTON ST	TOLEDO OH	43602
1157061	MCATEE RICH & JENNIFER (ORSURVTC)	328 CLAYTON ST	TOLEDO OH	43602
1216898	BOARD OF COMMISSIONERS OF LUCAS COUNTY OH	21 DEPOT ST	TOLEDO OH	43604
1216897	BOARD OF COMMISSIONERS OF LUCAS COUNTY OH	21 DEPOT ST	TOLEDO OH	43604
1455959	CITY OF TOLEDO	1 DISCOVERY WAY/COR OF SUMMIT &	TOLEDO OH	43604
1225307	CITY OF TOLEDO	1 DISCOVERY WAY/COR OF SUMMIT & R	TOLEDO OH	43604
1215922	39 NORTH ERIE, LLC	39 ERIE ST	TOLEDO OH	43624
1213894	NEIGHBORHOOD HEALTH ASSOCIATION INC	313 JEFFERSON AVE	TOLEDO OH	43604
355004	COUNTY OF LUCAS, OHIO	401 JEFFERSON AVE	TOLEDO OH	43604
355002	LUCAS COUNTY BOARD OF COMMISSIONERS	401 JEFFERSON AVE	TOLEDO OH	43604
355001	LUCAS COUNTY	401 JEFFERSON AVE	TOLEDO OH	43604
1214141	HILLENBRAND/ZALESKI SECOR,LLC,AN OHIO LI	425 JEFFERSON AVE	TOLEDO OH	43604
1215154	BOARD OF COUNTY COMMISSIONERS OF LUCAS C	500 JEFFERSON AVE	TOLEDO OH	43604
1240258	MIMG XXIV COMMODORE PERRYLLC A COLORADO	501 JEFFERSON AVE	TOLEDO OH	43604
1240267	MIMG XXIV COMMODORE PERRYLLC A COLORADO	501 JEFFERSON AVE	TOLEDO OH	43604
1240261	MIMG XXIV COMMODORE PERRYLLC A COLORADO	501 JEFFERSON AVE	TOLEDO OH	43604
1240252	MIMG XXIV COMMODORE PERRYLLC A COLORADO	501 JEFFERSON AVE	TOLEDO OH	43604
1240263	MIMG XXIV COMMODORE PERRYLLC A COLORADO	501 JEFFERSON AVE	TOLEDO OH	43604
1240257	MIMG XXIV COMMODORE PERRYLLC A COLORADO	501 JEFFERSON AVE	TOLEDO OH	43604
1240253	MIMG XXIV COMMODORE PERRYLLC A COLORADO	501 JEFFERSON AVE	TOLEDO OH	43604
1240254	MIMG XXIV COMMODORE PERRYLLC A COLORADO	501 JEFFERSON AVE	TOLEDO OH	43604
1240269	ROBERTSON EMILY M (TRUSTEE)	501 JEFFERSON AVE	TOLEDO OH	43604
1240262	MIMG XXIV COMMODORE PERRYLLC A COLORADO	501 JEFFERSON AVE	TOLEDO OH	43604
1240264	MIMG XXIV COMMODORE PERRYLLC A COLORADO	501 JEFFERSON AVE	TOLEDO OH	43604
1240265	MIMG XXIV COMMODORE PERRYLLC A COLORADO	501 JEFFERSON AVE	TOLEDO OH	43604
1240266	MIMG XXIV COMMODORE PERRYLLC A COLORADO	501 JEFFERSON AVE	TOLEDO OH	43604
1240255	MIMG XXIV COMMODORE PERRYLLC A COLORADO	501 JEFFERSON AVE	TOLEDO OH	43604
1240256	MIMG XXIV COMMODORE PERRYLLC A COLORADO	501 JEFFERSON AVE	TOLEDO OH	43604
1240259	MIMG XXIV COMMODORE PERRYLLC A COLORADO	501 JEFFERSON AVE	TOLEDO OH	43604
1240268	MIMG XXIV COMMODORE PERRYLLC A COLORADO	501 JEFFERSON AVE	TOLEDO OH	43604
1240260	MIMG XXIV COMMODORE PERRYLLC A COLORADO	501 JEFFERSON AVE	TOLEDO OH	43604
1215491	JA2 INVESTMENT LLC	513 JEFFERSON AVE	TOLEDO OH	43604
1215487	BARONE ENTERPRISES INC.AN OHIO CORP.	515 JEFFERSON AVE	TOLEDO OH	43604
1215481	ADVOCATES FOR BASIC LEGALEQUALITY INC AN	525 JEFFERSON AVE	TOLEDO OH	43604
1215557	BARONE JOHN J II	611 JEFFERSON AVE	TOLEDO OH	43604
1216744	EYDE GEORGE F FAMILY LLC	616 JEFFERSON AVE	TOLEDO OH	43604
1216747	EYDE GEORGE F FAMILY LLC	618 JEFFERSON AVE	TOLEDO OH	43604
1216751	TWO LAKE ERIE CENTER, LLC	622 JEFFERSON AVE	TOLEDO OH	43604
1215851	RUMPF DEVELOPMENT, LTD., AN OH LTD LIABI	701 JEFFERSON AVE	TOLEDO OH	43624
1880309	MANHATTAN BUILDING COMPANY AND OHIO CORP	702 JEFFERSON AVE	TOLEDO OH	43611
1216141	I.B.C. INC AN OHIO CORPORATION	713 JEFFERSON AVE	TOLEDO OH	43624
1216147	IBC INC AN OHIO CORPORATION	725 JEFFERSON AVE	TOLEDO OH	43624
1216157	WATER STREET DEVELOPMENT LLC	801 JEFFERSON AVE	TOLEDO OH	43624
1216554	OHIO BUILDING CO TOO, LTD, AN OHIO LIMIT	806 JEFFERSON AVE	TOLEDO OH	43624
1216164	WATER STREET DEVELOPMENT LLC AN OHIO LIM	807 JEFFERSON AVE	TOLEDO OH	43624
1216564	OHIO BUILDING CO TOO, LTD, AN OHIO LIMIT	812 JEFFERSON AVE	TOLEDO OH	43624
1217604	OHIO BUILDING CO TOO, LTD, AN OHIO LIMIT	814 JEFFERSON AVE	TOLEDO OH	43624
1217611	OHIO BUILDING CO TOO, LTD, AN OHIO LIMIT	814 JEFFERSON AVE	TOLEDO OH	43624
1217597	OHIO BUILDING CO TOO, LTD, AN OHIO LIMIT	818 JEFFERSON AVE	TOLEDO OH	43624
1217634	CLOCK TOWER CAPITAL LLC	901 JEFFERSON AVE	TOLEDO OH	43624
1217624	MIDLAND AGENCY OF NORTHWEST OHIO INC TRU	908 JEFFERSON AVE	TOLEDO OH	43624
1217927	GMR & RRR PROPERTIES LTD AN OHIO LLC	912 JEFFERSON AVE	TOLEDO OH	43624
1217904	CLOCK TOWER CAPITAL LLC	913 JEFFERSON AVE	TOLEDO OH	43624
1217924	GMR & RRR PROPERTIES LTD AN OHIO LLC	914 JEFFERSON AVE	TOLEDO OH	43624
1217907	GMR & RRR PROPERTIES LTD AN OHIO LLC	919 JEFFERSON AVE	TOLEDO OH	43624
1871509	OLD 2 NEW VENTURES, LTD AN OHIO LLC	323 LAFAYETTE ST	TOLEDO OH	43604

1214307	IBC INC AN OH CORP	416	LAFAYETTE ST	TOLEDO OH	43604
1217054	NOBLE BROADCAST OF TOLEDOINC	417	LAFAYETTE ST	TOLEDO OH	43602
1217051	NOBLE BROADCAST OF TOLEDOINC	423	LAFAYETTE ST	TOLEDO OH	43602
1217044	NOBLE BROADCAST OF TOLEDOINC	425	LAFAYETTE ST	TOLEDO OH	43602
1217131	AMA SUPERIOR, LLC AN OHIOLIMITED LIABILI	513	LAFAYETTE ST	TOLEDO OH	43602
1217161	IBC INC AN OH CORP	515	LAFAYETTE ST	TOLEDO OH	43602
1217157	IBC INC AN OH CORP	517	LAFAYETTE ST	TOLEDO OH	43602
1217154	IBC INC AN OH CORP	521	LAFAYETTE ST	TOLEDO OH	43602
1217147	IBC INC AN OH CORP	525	LAFAYETTE ST	TOLEDO OH	43602
1215694	KWIK PARKING INC AN OHIO CORPORATION	610	LAFAYETTE ST	TOLEDO OH	43602
1215714	KWIK PARKING INC AN OHIOCORPORATION	614	LAFAYETTE ST	TOLEDO OH	43602
1224944	KWIK PARKING INC AN OHIOCORPORATION	615	LAFAYETTE ST	TOLEDO OH	43602
1224947	KWIK PARKING INC AN OHIOCORPORATION	617	LAFAYETTE ST	TOLEDO OH	43602
1215711	KWIK PARKING INC AN OHIOCORPORATION	618	LAFAYETTE ST	TOLEDO OH	43602
1224951	KWIK PARKING INC AN OHIOCORPORATION	623	LAFAYETTE ST	TOLEDO OH	43602
1224954	KWIK PARKING INC AN OHIOCORPORATION	625	LAFAYETTE ST	TOLEDO OH	43602
1800036	STANDART PARKING LLC	730	LAFAYETTE ST	TOLEDO OH	43604
1216314	MSG INVESTMENTS LTD	802	LAFAYETTE ST	TOLEDO OH	43602
1216324	BAKERY BUILDING LLC A MICHIGAN LIMITED	812	LAFAYETTE ST	TOLEDO OH	43602
1217484	BAKERY BUILDING LLC A MICHIGAN LIMITED	814	LAFAYETTE ST	TOLEDO OH	43602
1153478	PLT HOLDINGS LLC TRUSTEE A LIMITED	401	MADISON AVE	TOLEDO OH	43604
1214957	245 SUMMIT LTD AN OHIO LIMITED PARTNERSH	406	MADISON AVE	TOLEDO OH	43604
1215057	STS MANAGEMENT INC OHIO CORPORATION	413	MADISON AVE	TOLEDO OH	43604
1215061	OHIO BUILDING CO., LTD., AN OHIO LIMITED	420	MADISON AVE	TOLEDO OH	43604
1216851	SUPERIOR INVESTMENT GROUP, INC., AN OH C	500	MADISON AVE	TOLEDO OH	43604
1215534	HUNTINGTON NATIONAL BANK (THE)	513	MADISON AVE	TOLEDO OH	43604
1215537	HUNTINGTON NATIONAL BANK (THE)	515	MADISON AVE	TOLEDO OH	43604
1525513	HUNTINGTON NATIONAL BANK (THE)	519	MADISON AVE	TOLEDO OH	43604
1525515	HUNTINGTON NATIONAL BANK (THE)	519	MADISON AVE	TOLEDO OH	43604
1525514	HUNTINGTON NATIONAL BANK (THE)	519	MADISON AVE	TOLEDO OH	43604
1525511	HUNTINGTON NATIONAL BANK (THE)	519	MADISON AVE	TOLEDO OH	43604
1525517	HUNTINGTON NATIONAL BANK (THE)	519	MADISON AVE	TOLEDO OH	43604
1525520	HUNTINGTON NATIONAL BANK (THE)	519	MADISON AVE	TOLEDO OH	43604
1525516	HUNTINGTON NATIONAL BANK (THE)	519	MADISON AVE	TOLEDO OH	43604
1525512	HUNTINGTON NATIONAL BANK (THE)	519	MADISON AVE	TOLEDO OH	43604
1525519	HUNTINGTON NATIONAL BANK (THE)	519	MADISON AVE	TOLEDO OH	43604
1525510	HUNTINGTON NATIONAL BANK (THE)	519	MADISON AVE	TOLEDO OH	43604
1525518	HUNTINGTON NATIONAL BANK (THE)	519	MADISON AVE	TOLEDO OH	43604
1216837	URBANX INC	520	MADISON AVE	TOLEDO OH	43604
1216784	CITY OF TOLEDO	607	MADISON AVE	TOLEDO OH	43604
1216791	NICHOLAS NXT LLC AN OHIO LIMITED LIABILITY	608	MADISON AVE	TOLEDO OH	43604
1216707	TOL AREA REG TRAN AUTH	611	MADISON AVE	TOLEDO OH	43624
1216691	URBANX INC	616	MADISON AVE	TOLEDO OH	43624
1216697	TOL AREA REG TRAN AUTH	617	MADISON AVE	TOLEDO OH	43624
1216681	LOUISVILLE TITLE AGENCY FOR N.W. OHIO INC	626	MADISON AVE	TOLEDO OH	43604
1216641	THE MANHATTAN BUIDING COMPANY	701	MADISON AVE	TOLEDO OH	43624
1216664	KWIK PARKING INC	702	MADISON AVE	TOLEDO OH	43624
1216651	FARMERS SAVINGS & TRUSTCO TR ET AL	709	MADISON AVE	TOLEDO OH	43624
1216657	BELL REALTY CO	709	MADISON AVE	TOLEDO OH	43624
1216654	FARMERS SAVINGS & TR CO TR ET AL	709	MADISON AVE	TOLEDO OH	43624
1216647	FARMERS SAVINGS TR & COTR ET AL	709	MADISON AVE	TOLEDO OH	43624
1216637	RIPLEY FREDERIC C IIIETAL	709	MADISON AVE	TOLEDO OH	43624
1549281	KWIK PARKING INC	714	MADISON AVE	TOLEDO OH	43624
1216661	YOUR NEXT RESIDENCE LLC AN OHIO LIMITED	717	MADISON AVE	TOLEDO OH	43624
1549421	OHIO BUILDING CO TOO, LTD, AN OHIO LIMIT	811	MADISON AVE	TOLEDO OH	43624
1549431	OHIO BUILDING CO TOO, LTD, AN OHIO LIMIT	819	MADISON AVE	TOLEDO OH	43624
1549471	JACKIER LLC	901	MADISON AVE	TOLEDO OH	43604
1549467	900 MADISON OPPORTUNITY FUND LLC	909	MADISON AVE	TOLEDO OH	43624
1549657	900 MADISON OPPORTUNITY FUND LLC	911	MADISON AVE	TOLEDO OH	43624
1549654	900 MADISON OPPORTUNITY FUND LLC	913	MADISON AVE	TOLEDO OH	43624
1549661	900 MADISON OPPORTUNITY FUND LLC	915	MADISON AVE	TOLEDO OH	43624

1549651	917 MADISON AVE LLC AN OHIO LLC	917	MADISON AVE	TOLEDO	OH	43624
1549652	917 MADISON AVE LLC AN OHIO LLC	917	MADISON AVE	TOLEDO	OH	43624
1549647	BRYTSPOT LLC A TEXAS LLC	919	MADISON AVE	TOLEDO	OH	43624
1877473	CITY OF TOLEDO	100	MAIN ST	TOLEDO	OH	43605
1547347	TOLEDO LUCAS COUNTY PORT AUTHORITY	2	MARITIME PLAZA	TOLEDO	OH	43604
1224891	KIELY JOHN	602	MARKET ST	TOLEDO	OH	43602
1224887	KIELY JOHN	608	MARKET ST	TOLEDO	OH	43602
1240555	BOARD OF COUNTY COMMISSIONERS OF LUCAS C	0	MONROE ST	TOLEDO	OH	43604
1213957	MIDLAND AGENCY OF NORTHWEST OHIO INC TRU	313	MONROE ST	TOLEDO	OH	43604
1213964	MIDLAND AGENCY OF NORTHWEST OHIO INC TRU	321	MONROE ST	TOLEDO	OH	43604
1215201	MIMG XXIV COMMODORE PERRYLLC A COLORADO	508	MONROE ST	TOLEDO	OH	43604
1215204	CITY OF TOLEDO	514	MONROE ST	TOLEDO	OH	43604
1240410	SHEENA MANAGEMENT PROPERTY SERVICES, LLC	523	MONROE ST	TOLEDO	OH	43604
1240446	SHEENA MANAGEMENT PROPERTY SERVICES, LLC	523	MONROE ST	TOLEDO	OH	43604
019030025	CONDO COMPLEX	601	MONROE ST	TOLEDO	OH	43604
1215597	BECZYNSKI INC	601	MONROE ST R	TOLEDO	OH	43604
1215591	ATT COMMUNICATIONS OF OHINC AN OH CORP	602	MONROE ST	TOLEDO	OH	43604
1215613	MONROE-HURON LLC AN OHIO LIMITED LIABILI	607	MONROE ST	TOLEDO	OH	43604
1215612	BECZYNSKI INC AN OHIO CORPORATION	607	MONROE ST	TOLEDO	OH	43604
1200005	GIAMMARCO PROPERTIES LLC AN OHIO LLC	609	MONROE ST	TOLEDO	OH	43604
1215611	GIAMMARCO PROPERTIES LLC AN OHIO LLC	609	MONROE ST	TOLEDO	OH	43604
1215584	610 MONROE LLC AN OHIO LLC	610	MONROE ST	TOLEDO	OH	43604
1215794	TOKLES KATHERINE ANASTASIA	613	MONROE ST	TOLEDO	OH	43604
1215797	TOKLES KATHERINE ANASTASIA	615	MONROE ST	TOLEDO	OH	43604
1215801	TOKLES KATHERINE ANASTASIA	617	MONROE ST	TOLEDO	OH	43604
1200010	IBC INC AN OHIO CORPORATION	619	MONROE ST	TOLEDO	OH	43604
1215787	IBC INC AN OHIO CORPORATION	619	MONROE ST	TOLEDO	OH	43604
1880254	VOUDOURIS THEODORE J	701	MONROE ST	TOLEDO	OH	43604
1215904	FRANKIE GOES TO TOWN LLC AN OHIO LIMITED LIABILT	702	MONROE ST	TOLEDO	OH	43624
1215921	MADDAD LLC	705	MONROE ST	TOLEDO	OH	43624
1880241	706 PARTNERS LLC AN OHIO LIMITED LIABIL	706	MONROE ST	TOLEDO	OH	43624
1215917	MADDAD LLC	709	MONROE ST	TOLEDO	OH	43624
1215901	710 MONROE STREET LLC	710	MONROE ST	TOLEDO	OH	43603
1216087	GIAPRO LLC AN OHIO LLC	713	MONROE ST	TOLEDO	OH	43624
1216107	RUMPF DEVELOPMENT LTD AN OHIO LLC	714	MONROE ST	TOLEDO	OH	43624
1216111	RUMPF BRUCE F	716	MONROE ST	TOLEDO	OH	43624
1216094	GIAPRO LLC AN OHIO LLC	725	MONROE ST	TOLEDO	OH	43624
1216224	KWIK PARKING INC	801	MONROE ST	TOLEDO	OH	43624
1216217	KWIK PARKING INC	807	MONROE ST	TOLEDO	OH	43624
1216211	TRUE NORTH ENERGY LLC A DELAWARE LIMITED	808	MONROE ST	TOLEDO	OH	43624
1217557	TRUE NORTH ENERGY LLC A DELAWARE LIMITED	812	MONROE ST	TOLEDO	OH	43624
1217671	SAMOS 38 LLC	901	MONROE ST	TOLEDO	OH	43624
1217667	SAMOS 38 LLC	903	MONROE ST	TOLEDO	OH	43624
1217664	SAMOS 38 LLC	907	MONROE ST	TOLEDO	OH	43624
1217661	SAMOS 38 LLC	909	MONROE ST	TOLEDO	OH	43624
1217867	CHESBROUGH INVESTMENT COMPANY LLC	912	MONROE ST	TOLEDO	OH	43624
1217854	SAMOS 38 LLC	915	MONROE ST	TOLEDO	OH	43624
1217861	MORGAN SERVICES INC	919	MONROE ST	TOLEDO	OH	43624
1156734	APPLOCATIONS LLC AN OHIO LLC	201	MORRIS ST	TOLEDO	OH	43602
1156662	APPLOCATIONS LLC AN OHIO LLC	201	MORRIS ST R	TOLEDO	OH	43602
1157207	MORIARTY JAMES M	236	MORRIS ST	TOLEDO	OH	43602
1156731	APPLOCATIONS LLC AN OHIO LLC	239	MORRIS ST	TOLEDO	OH	43602
1156663	247 LLC ETAL	239	MORRIS ST R	TOLEDO	OH	43602
1157214	MORIARTY JAMES M	240	MORRIS ST	TOLEDO	OH	43602
1157217	MORIARTY JAMES M	246	MORRIS ST	TOLEDO	OH	43602
1156707	247 LLC ETAL	247	MORRIS ST	TOLEDO	OH	43602
1157221	MORIARTY JAMES M	250	MORRIS ST	TOLEDO	OH	43602
1880308	KWIK PARKING INC AN OHIO CORPORATION	0	N ERIE ST	TOLEDO	OH	43611
1215964	ROOT FAMILY INVESTMENTS LTD AN OHIO LIMI	1	N ERIE ST	TOLEDO	OH	43624
1542851	JACOB HANNAH LLC	1002	N SUMMIT ST	TOLEDO	OH	43604
1543197	JOSEPH BELLAL	1003	N SUMMIT ST	TOLEDO	OH	43611

1543194 JOSEPH BELLAL	1005 N SUMMIT ST	TOLEDO OH	43604
1543189 TOLEDO HOMES FOR RENT LLC	1007 N SUMMIT ST	TOLEDO OH	43604
1543187 TOLEDO HOMES FOR RENT LLC	1007 N SUMMIT ST	TOLEDO OH	43604
355011 LUCAS COUNTY	101 N SUMMIT ST	TOLEDO OH	43604
355007 PLT HOLDINGS, LLC, TRUSTEE	101 N SUMMIT ST	TOLEDO OH	43604
1543184 FLYNN JAMES M	1015 N SUMMIT ST	TOLEDO OH	43604
1543177 LOESER DEMI S	1017 N SUMMIT ST	TOLEDO OH	43604
1216327 LOUISVILLE TITLE AGENCY FOR N.W. OHIO INC.,	102 N SUMMIT ST	TOLEDO OH	43604
1217651 CLOCK TOWER CAPITAL LLC	103 N MICHIGAN ST	TOLEDO OH	43624
1543157 UNITED USED APPLIANCES LLC	1039 N SUMMIT ST	TOLEDO OH	43604
1217567 TRUE NORTH ENERGY LLC A DELAWARE LIMITED	108 N MICHIGAN ST	TOLEDO OH	43624
1215654 DELDOC LLC AN OHIO LLC	11 N HURON ST	TOLEDO OH	43604
1215655 DELDOC LLC AN OHIO LLC	11 N HURON ST	TOLEDO OH	43604
1215447 MIMG XXIV COMMODORE PERRYLLC A COLORADO	110 N HURON ST	TOLEDO OH	43604
1217571 MIDLAND AGENCY OF NORTHWEST OHIO INC TR	110 N MICHIGAN ST	TOLEDO OH	43624
1216337 LOUISVILLE TITLE AGENCY FOR N.W. OHIO INC.,	110 N SUMMIT ST	TOLEDO OH	43604
1542951 ELM & SUMMIT HOLDINGS LLC	1102 N SUMMIT ST	TOLEDO OH	43604
1215914 710 MONROE STREET LLC	111 N ERIE ST	TOLEDO OH	43624
1542967 TAPEGATE, LLC AN OHIO LIMITED LIABILITY	1116 N SUMMIT ST	TOLEDO OH	43611
1542964 TAPEGATE, LLC AN OHIO LIMITED LIABILITY	1116 N SUMMIT ST	TOLEDO OH	43611
1542971 TAPEGATE, LLC AN OHIO LIMITED LIABILITY	1116 N SUMMIT ST	TOLEDO OH	43611
1543141 TORREY HILL APARTMENTS LLC	1119 N SUMMIT ST	TOLEDO OH	43604
1216191 MIDLAND AGENCY OF NORTHWEST OHIO INC TR	113 N ONTARIO ST	TOLEDO OH	43624
1543124 SHARQEYA LLC	1133 N SUMMIT ST	TOLEDO OH	43604
1215817 LAVERGNE BASIL M &RONALD B TRS	114 N ERIE ST	TOLEDO OH	43604
1216114 RUMPF DEVELOPMENT LTD AN OHIO LLC	114 N ONTARIO ST	TOLEDO OH	43624
1216404 MIDLAND AGENCY OF NORTHWEST OHIO INC TRUSTEE	114 N SUMMIT ST	TOLEDO OH	43604
1215897 ENOSIS OMEGA LLC AN OHIO LIMITED LIABILI	115 N ERIE ST	TOLEDO OH	43624
1217647 CHESBROUGH INVESTMENT COMPANY LLC AN OHI	115 N MICHIGAN ST	TOLEDO OH	43624
1215194 MIMG XXIV COMMODORE PERRYLLC A COLORADO	115 N SUPERIOR ST	TOLEDO OH	43604
1216397 MIDLAND AGENCY OF NORTHWEST OHIO INC TRUSTEE	116 N SUMMIT ST	TOLEDO OH	43604
1215894 RUMPF BRUCE F	117 N ERIE ST	TOLEDO OH	43624
1215824 LAVERGNE BASIL M & RONALDB TR	118 N ERIE ST	TOLEDO OH	43604
1216117 I.B.C. INC AN OHIO CORPORATION	118 N ONTARIO ST	TOLEDO OH	43624
1216391 MIDLAND AGENCY OF NORTHWEST OHIO INC TRUSTEE	118 N SUMMIT ST	TOLEDO OH	43604
1216184 MIDLAND AGENCY OF NORTHWEST OHIO INC TRUSTEE	119 N ONTARIO ST	TOLEDO OH	43624
1216047 IBC INC AN OHIO CORPORATION	12 N ONTARIO ST	TOLEDO OH	43624
1213994 NEIGHBORHOOD HEALTH ASSOCIATION OF TOLEDO	12 N ST CLAIR ST	TOLEDO OH	43604
1216384 MIDLAND AGENCY OF NORTHWEST OHIO INC TRUSTEE	120 N SUMMIT ST	TOLEDO OH	43604
1543104 BILLINGS DONALD F	1201 N SUMMIT ST	TOLEDO OH	43604
1215887 MOCKENSTURM MARK M CO R ETAL	121 N ERIE ST	TOLEDO OH	43624
1215191 MIMG XXIV COMMODORE PERRYLLC A COLORADO	121 N SUPERIOR ST	TOLEDO OH	43604
1863947 PENNSYLVANIA LINES LLC	1216 N SUMMIT ST	TOLEDO OH	43604
1543101 TOLEDO L & L REALTY COMPANY	1219 N SUMMIT ST	TOLEDO OH	43604
1543097 TOLEDO L & L REALTY COMPANY	1219 N SUMMIT ST	TOLEDO OH	43604
1543094 TOLEDO L & L REALTY COMPANY	1219 N SUMMIT ST	TOLEDO OH	43604
1216377 MIDLAND AGENCY OF NORTHWEST OHIO INC TRUSTEE	122 N SUMMIT ST	TOLEDO OH	43604
1543091 TOLEDO L & L REALTY COMPANY	1221 N SUMMIT ST	TOLEDO OH	43604
1543087 MUFLEH FATMEH B TR	1223 N SUMMIT ST	TOLEDO OH	43604
1215891 123 N ERIE LLC	123 N ERIE ST	TOLEDO OH	43624
1215574 OHIO BELL TELEPHONE CO	123 N HURON ST	TOLEDO OH	43604
1215187 MIMG XXIV COMMODORE PERRYLLC A COLORADO	123 N SUPERIOR ST	TOLEDO OH	43604
1543081 MUFLEH FATMEH B TR	1231 N SUMMIT ST	TOLEDO OH	43604
1543084 MUFLEH FATMEH B TR	1231 N SUMMIT ST	TOLEDO OH	43604
1543077 MUFLEH FATMEH B TR	1231 N SUMMIT ST	TOLEDO OH	43604
1216121 CYNTHIA TAYLOR HOLDINGS LTD	124 N ONTARIO ST	TOLEDO OH	43624
1216371 MIDLAND AGENCY OF NORTHWEST OHIO INC TRUSTEE	124 N SUMMIT ST	TOLEDO OH	43604
1216177 MIDLAND AGENCY OF NORTHWEST OHIO INC TRUSTEE	125 N ONTARIO ST	TOLEDO OH	43624
1215451 CITY OF TOLEDO	125 N SUPERIOR ST	TOLEDO OH	43604
1215205 MIMG XXIV COMMODORE PERRYLLC	125 N SUPERIOR ST R	TOLEDO OH	43604
1216127 FERGUSON RICHARD W & JANET M	126 N ONTARIO ST	TOLEDO OH	43624

1216364	MIDLAND AGENCY OF NORTHWEST OHIO INC TRUSTEE	126 N SUMMIT ST	TOLEDO OH	43604
1216424	MIDLAND AGENCY OF NORTHWEST OHIO INC TRUSTEE	126 N SUMMIT ST	TOLEDO OH	43604
1216344	MIDLAND AGENCY OF NORTHWEST OHIO INC TRUSTEE	126 N SUMMIT ST	TOLEDO OH	43604
1215831	OHIO BELL TELEPHONE	128 N ERIE ST	TOLEDO OH	43604
1217574	MIDLAND AGENCY OF NORTHWEST OHIO INC TR	128 N MICHIGAN ST	TOLEDO OH	43624
1216357	MIDLAND AGENCY OF NORTHWEST OHIO INC TRUSTEE	128 N SUMMIT ST	TOLEDO OH	43604
1215571	KWIK PARKING INC	129 N HURON ST	TOLEDO OH	43604
1215637	FONG JOHN W & MADONNA	13 N HURON ST	TOLEDO OH	43604
1217577	MIDLAND AGENCY OF NORTHWEST OHIO INC TR	130 N MICHIGAN ST	TOLEDO OH	43624
1216351	MIDLAND AGENCY OF NORTHWEST OHIO INC TRUSTEE	130 N SUMMIT ST	TOLEDO OH	43604
1543067	HIGH-TECH TOLEDO PROPERTIES, LLC	1301 N SUMMIT ST	TOLEDO OH	43605
1543064	HIGH-TECH TOLEDO PROPERTIES LLC	1309 N SUMMIT ST	TOLEDO OH	43604
1215564	KWIK PARKING INC	131 N HURON ST	TOLEDO OH	43604
1543057	AVATAR LLC	1317 N SUMMIT ST	TOLEDO OH	43604
1543061	AVATAR LLC	1317 N SUMMIT ST	TOLEDO OH	43604
1543054	AVATAR LLC	1319 N SUMMIT ST	TOLEDO OH	43604
1215837	STOCKARD BARBARA B ET AL	132 N ERIE ST	TOLEDO OH	43604
1543051	MAGNOLIA & SUMMIT PROPERTIES LLC AN OHIO	1323 N SUMMIT ST	TOLEDO OH	43604
1543044	MAGNOLIA & SUMMIT PROPERTIES LLC AN OHIO	1325 N SUMMIT ST	TOLEDO OH	43604
1543041	MAGNOLIA & SUMMIT PROPERTIES LLC AN OHIO	1335 N SUMMIT ST	TOLEDO OH	43604
1543034	MAGNOLIA & SUMMIT PROPERTIES LLC AN OHIO	1337 N SUMMIT ST	TOLEDO OH	43604
1542987	BRIDGES OF TOLEDO LLC	1338 N SUMMIT ST	TOLEDO OH	43604
1216134	FERGUSON RICHARD W & JANET M	134 N ONTARIO ST	TOLEDO OH	43624
1215834	BARONE J J II	136 N ERIE ST	TOLEDO OH	43604
1215474	APPLOCATIONS LLC AN OHIO LLC	136 N HURON ST	TOLEDO OH	43604
1216417	MIDLAND AGENCY OF NORTHWEST OHIO INC TRUSTEE	136 N SUMMIT ST	TOLEDO OH	43604
1215551	EZ PARKING LLC	139 N HURON ST	TOLEDO OH	43604
1215761	MAUMEE RIVER ESTATES LLC AN OHIO LIMITED	14 N ERIE ST	TOLEDO OH	43604
1215841	RUMPF DEVELOPMENT, LTD., AN OH LTD LIABI	140 N ERIE ST	TOLEDO OH	43604
1216411	MIDLAND AGENCY OF NORTHWEST OHIO INC TRUSTEE	140 N SUMMIT ST	TOLEDO OH	43604
1213884	LUCAS COUNTY ECONOMIC DEVELOPMENT CORPOR	141 N SUMMIT ST	TOLEDO OH	43604
1215945	BAF, LLC	15 N ERIE ST	TOLEDO OH	43624
1240413	RIGHT FIELD LLC	15 N ST CLAIR ST	TOLEDO OH	43604
1240414	RIGHT FIELD LLC	15 N ST CLAIR ST	TOLEDO OH	43604
1216431	MIDLAND AGENCY OF NORTHWEST OHIO INC TRUSTEE	152 N SUMMIT ST	TOLEDO OH	43604
1216057	IBC INC AN OHIO CORPORATION	16 N ONTARIO ST	TOLEDO OH	43624
1215634	3 SECONDS LLC	17 N HURON ST	TOLEDO OH	43604
1216054	IBC INC AN OHIO CORPORATION	18 N ONTARIO ST	TOLEDO OH	43624
1213997	18 N ST CLAIR MANAGEMENT COMPANY LTD AN	18 N ST CLAIR ST	TOLEDO OH	43604
1215934	BAF, LLC	19 N ERIE ST	TOLEDO OH	43624
1240412	RIGHT FIELD LLC	19 N ST CLAIR ST	TOLEDO OH	43604
1214011	8 NORTH ST CLAIR STREET VENTURES LLC	2 N ST CLAIR ST	TOLEDO OH	43604
1216061	IBC INC AN OHIO CORPORATION	20 N ONTARIO ST	TOLEDO OH	43624
1213987	DYMARKOWSKI DEVELOPMENT GROUP LTD	20 N ST CLAIR ST	TOLEDO OH	43604
1214839	GEORGE F EYDE FAMILY LLC	200 N ST CLAIR ST	TOLEDO OH	43604
1214838	EYDE MAUMEE DEVELOPMENT, LLC	200 N ST CLAIR ST	TOLEDO OH	43604
1214837	GEORGE F EYDE FAMILY LLC	200 N ST CLAIR ST	TOLEDO OH	43604
015600015	CONDO COMPLEX	200 N ST CLAIR ST		
1214840	GEORGE F EYDE FAMILY LLC	200 N ST CLAIR ST	TOLEDO OH	43604
1214987	TOLEDO-LUCAS COUNTY PORT AUTHORITY	201 N ST CLAIR ST	TOLEDO OH	43604
1200014	PROMEDICA HEALTH SYSTEM, INC	202 N SUMMIT ST	TOLEDO OH	43604
1214418	PROMEDICA HEALTH SYSTEM, INC	202 N SUMMIT ST	TOLEDO OH	43604
1215627	3 SECONDS LLC	21 N HURON ST	TOLEDO OH	43604
1213784	BOARD OF COMMISSIONERS OF LUCAS COUNTY OH	21 N SUMMIT ST	TOLEDO OH	43604
1213785	BOARD OF COMMISSIONERS OF LUCAS COUNTY OH	21 N SUMMIT ST	TOLEDO OH	43604
1549447	OHIO BUILDING CO TOO, LTD, AN OHIO LIMIT	211 N MICHIGAN ST	TOLEDO OH	43624
1216727	EYDE GEORGE F FAMILY LLC	212 N ERIE ST	TOLEDO OH	43624
1214764	GEORGE F EYDE FAMILY LLC	215 N SUMMIT ST	TOLEDO OH	43604
1217607	OHIO BUILDING CO TOO, LTD, AN OHIO LIMIT	218 N MICHIGAN ST	TOLEDO OH	43624
1217621	OHIO BUILDING CO TOO, LTD, AN OHIO LIMIT	218 N MICHIGAN ST	TOLEDO OH	43624
1215767	KNIGHT BROTHERS REALTY LLC	22 N ERIE ST	TOLEDO OH	43624

1216064	IBC INC AN OHIO CORPORATION	22 N ONTARIO ST	TOLEDO OH	43624
1217614	OHIO BUILDING CO TOO, LTD, AN OHIO LIMIT	220 N MICHIGAN ST	TOLEDO OH	43624
1216761	EYDE GEORGE F FAMILY LLC	221 N HURON ST	TOLEDO OH	43604
1216724	L & G REALTY HOLDINGS LTDAN OHIO LLC	222 N ERIE ST	TOLEDO OH	43624
1549457	MUNGER HAL P ETAL	225 N MICHIGAN ST	TOLEDO OH	43604
1214981	TOLEDO-LUCAS COUNTY PORT AUTHORITY	227 N ST CLAIR ST	TOLEDO OH	43604
1216721	ROTH PHILIP J.M.	228 N ERIE ST	TOLEDO OH	43624
1216541	OHIO BUILDING CO TOO, LTD, AN OHIO LIMIT	229 N ONTARIO ST	TOLEDO OH	43624
1213801	DOWNTOWN TOLEDO VENTURES, LTD	23 N SUMMIT ST	TOLEDO OH	43604
1216767	BROTHERS HOLDING COMPANY LLC AN OHIO LLC	231 N HURON ST	TOLEDO OH	43604
1549461	NEIGHBORHOOD HEALTH ASSOCAITION OF TOLED	231 N MICHIGAN ST	TOLEDO OH	43624
1216714	ROTH PHILIP J.M.	232 N ERIE ST	TOLEDO OH	43624
1215527	HUNTINGTON NATIONAL BANK (THE)	232 N HURON ST	TOLEDO OH	43604
1216771	BROTHERS HOLDING COMPANY LLC AN OHIO LLC	233 N HURON ST	TOLEDO OH	43604
1216717	LEWANDOWSKI PROPERTIES, LTD	234 N ERIE ST	TOLEDO OH	43604
1549464	NEIGHBORHOOD HEALTH ASSOCAITION OF TOLED	235 N MICHIGAN ST	TOLEDO OH	43624
1214761	RIVERFRONT APARTMENTS LIMITED PARTNERSHI	235 N SUMMIT ST	TOLEDO OH	43604
1214757	RIVERFRONT APARTMENTS LIMITED PARTNERSHI	237 N SUMMIT ST	TOLEDO OH	43604
1214754	RIVERFRONT APARTMENTS LIMITED PARTNERSHI	239 N SUMMIT ST	TOLEDO OH	43604
1216067	GIAPRO, LLC	24 N ONTARIO ST	TOLEDO OH	43624
1215118	SUPERIOR STREET LLC	241 N SUPERIOR ST	TOLEDO OH	43604
1216774	CITY OF TOLEDO	243 N HURON ST	TOLEDO OH	43604
1214744	RIVERFRONT APARTMENTS LIMITED PARTNERSHI	245 N SUMMIT ST	TOLEDO OH	43604
1215107	MIDLAND AGENCY OF NORTHWEST OHIO INC	245 N SUPERIOR ST	TOLEDO OH	43604
1216237	LORENZEN C. WILLIAM TRUSTEE	25 N ONTARIO ST	TOLEDO OH	43604
1215621	3 SECONDS LLC	27 N HURON ST	TOLEDO OH	43604
1215777	KAREEM PROPERTIES LLC AN OHIO LLC	28 N ERIE ST	TOLEDO OH	43604
1216081	GIAPRO, LLC	28 N ONTARIO ST	TOLEDO OH	43624
1200011	HENSVILLE IMPROVEMENTS LLC AN OHIO LIMIT	28 N ST CLAIR ST	TOLEDO OH	43604
1213977	HENSVILLE IMPROVEMENTS LLC AN OHIO LIMIT	28 N ST CLAIR ST	TOLEDO OH	43604
1215624	3 SECONDS LLC	29 N HURON ST	TOLEDO OH	43604
1214721	300 MADISON BUILDING, LLC	303 N SUMMIT ST	TOLEDO OH	43604
1215931	LEASEWERKS LLC AN OH LLC	31 N ERIE ST	TOLEDO OH	43624
1213811	MIDLAND AGENCY OF NORTHWEST OHIO INC TR	31 N SUMMIT ST	TOLEDO OH	43604
1549121	KWIK PARKING INC	311 N ERIE ST	TOLEDO OH	43624
1216867	TOLEDO BAR ASSOC AN OH NON-PROFIT CORP	311 N SUPERIOR ST	TOLEDO OH	43604
1216677	LOUISVILLE TITLE AGENCY FOR N.W. OHIO INC	314 N ERIE ST	TOLEDO OH	43624
1215071	TOLEDO-LUCAS COUNTY PORT AUTHORITY	314 N SUPERIOR ST	TOLEDO OH	43604
1214947	TOLEDO-LUCAS COUNTY PORT AUTHORITY	315 N ST CLAIR ST	TOLEDO OH	43604
1216864	317 SUPERIOR LLC AN OHIO LLC	317 N SUPERIOR ST	TOLEDO OH	43604
1216674	MIDLAND AGENCY OF NORTHWEST OHIO TRUSTEE	318 N ERIE ST	TOLEDO OH	43624
1216811	URBANX INC	319 N HURON ST	TOLEDO OH	43604
1216861	GREATER METROPOLITAN TITLE INC AS	319 N SUPERIOR ST	TOLEDO OH	43604
1215782	TOKLES KATHERINE ANASTASIA	32 N ERIE ST	TOLEDO OH	43609
1216824	MIMG LXII LASALLE, LLC	320 N HURON ST	TOLEDO OH	43604
1216804	URBANX INC	321 N HURON ST	TOLEDO OH	43604
1214714	A & G REALTY VENTURES LLC, AN OHIO LIMIT	321 N SUMMIT ST	TOLEDO OH	43604
1216877	GREATER METROPOLITAN TITLE INC AS	321 N SUPERIOR ST	TOLEDO OH	43604
1549117	MIDLAND AGENCY OF NORTHWEST OHIO TRUSTEE	322 N ERIE ST	TOLEDO OH	43624
1216834	MIMG LXII LASALLE, LLC	322 N HURON ST	TOLEDO OH	43604
1216801	MIDLAND AGENCY OF NORTHWEST OHIO INC TR	323 N HURON ST	TOLEDO OH	43604
1503713	LOUISVILLE TITLE AGENCY FOR N W OHIO INC TRUSTEE	324 N ERIE ST	TOLEDO OH	43624
010870235	CONDO COMPLEX	324 N ERIE ST	TOLEDO OH	43624
1503712	LOUISVILLE TITLE AGENCY FOR N W OHIO INC TRUSTEE	324 N ERIE ST	TOLEDO OH	43624
1503711	LOUISVILLE TITLE AGENCY FOR N W OHIO INC TRUSTEE	324 N ERIE ST	TOLEDO OH	43624
1214941	TOLEDO-LUCAS COUNTY PORT AUTHORITY	325 N ST CLAIR ST	TOLEDO OH	43604
1216874	325 NORTH SUPERIOR STREET LLC	325 N SUPERIOR ST	TOLEDO OH	43604
1549107	LOUISVILLE TITLE AGENCY OF N.W. OHIO INC AN	326 N ERIE ST	TOLEDO OH	43624
1548944	LOUISVILLE TITLE AGENCY FOR N.W. OHIO INC	329 N HURON ST	TOLEDO OH	43608
1216871	SKOWRON ERIC	329 N SUPERIOR ST	TOLEDO OH	43604
1215614	SAM OKUN PRODUCE CO	33 N HURON ST	TOLEDO OH	43604

1213817	MIDLAND AGENCY OF NORTHWEST OHIO INC TRU	33 N SUMMIT ST	TOLEDO OH	43604
1214294	IBC INC AN OH CORP	33 N SUPERIOR ST	TOLEDO OH	43604
1215081	TOLEDO-LUCAS COUNTY PORT AUTHORITY	330 N SUPERIOR ST	TOLEDO OH	43604
1548951	CAD TAVERN INC AN OHIO CORPORATION	331 N HURON ST	TOLEDO OH	43604
1214934	TOLEDO-LUCAS COUNTY PORT AUTHORITY	331 N ST CLAIR ST	TOLEDO OH	43604
1216894	MIDLAND AGENCY OF NORTHWEST OHIO INC TRU	331 N SUPERIOR ST	TOLEDO OH	43604
1549101	BAUMGARTNER LLC	332 N ERIE ST	TOLEDO OH	43624
1215084	TOLEDO-LUCAS COUNTY PORT AUTHORITY	332 N SUPERIOR ST	TOLEDO OH	43604
1548937	CAD TAVERN INC AN OHIO CORPORATION	333 N HURON ST	TOLEDO OH	43604
1215087	TOLEDO-LUCAS COUNTY PORT AUTHORITY	334 N SUPERIOR ST	TOLEDO OH	43604
1214937	TOLEDO-LUCAS COUNTY PORT AUTHORITY	335 N ST CLAIR ST	TOLEDO OH	43604
1216891	SAGERT PAUL D	335 N SUPERIOR ST	TOLEDO OH	43604
1214927	TOLEDO-LUCAS COUNTY PORT AUTHORITY	337 N ST CLAIR ST	TOLEDO OH	43604
1549097	SAVOY PROPERTY DEVELOPMENT LLC AN OHIO L	338 N ERIE ST	TOLEDO OH	43624
1213974	MIDLAND AGENCY OF NORTHWEST OHIO INC TRU	34 N ST CLAIR ST	TOLEDO OH	43604
1216881	MIMG LXII LASALLE, LLC	347 N SUPERIOR ST	TOLEDO OH	43604
1213814	MIDLAND AGENCY OF NORTHWEST OHIO INC TRU	35 N SUMMIT ST	TOLEDO OH	43604
1217541	LORENZEN COMPANY (THE) LLC AN OHIO LIMIT	38 N MICHIGAN ST	TOLEDO OH	43624
1213821	MIDLAND AGENCY OF NORTHWEST OHIO INC TRU	39 N SUMMIT ST	TOLEDO OH	43604
1217547	KWIK PARKING INC	40 N MICHIGAN ST	TOLEDO OH	43624
1550650	RENAISSANCE II SENIOR HOUSING LIMITED PA	401 N ST CLAIR ST	TOLEDO OH	43604
1550652	RENAISSANCE II SENIOR HOUSING LIMITED PA	401 N ST CLAIR ST	TOLEDO OH	43604
1547854	CITY OF TOLEDO	406 N SUPERIOR ST	TOLEDO OH	43604
1213824	MIDLAND AGENCY OF NORTHWEST OHIO INC TRU	41 N SUMMIT ST	TOLEDO OH	43604
1214301	IBC INC AN OH CORP	41 N SUPERIOR ST	TOLEDO OH	43604
1548994	WEKS B LLC AN OHIO LLC	411 N HURON ST	TOLEDO OH	43604
1547874	300 MADISON BUILDING LLC AN OHIO LIMITED	411 N SUPERIOR ST	TOLEDO OH	43604
1549047	HAMLIN INN CO	412 N ERIE ST	TOLEDO OH	43624
1547847	CITY OF TOLEDO	412 N SUPERIOR ST	TOLEDO OH	43604
1547877	300 MADISON BUILDING LLC AN OHIO LIMITED	413 N SUPERIOR ST	TOLEDO OH	43604
1548991	WEKS B LLC AN OHIO LLC	415 N HURON ST	TOLEDO OH	43604
1547881	300 MADISON BUILDING LLC AN OHIO LIMITED	415 N SUPERIOR ST	TOLEDO OH	43604
1547851	CITY OF TOLEDO	416 N SUPERIOR ST	TOLEDO OH	43602
1548987	WEKS B LLC AN OHIO LLC	417 N HURON ST	TOLEDO OH	43604
1502985	LAW OFFICES OF STEVIN J GROTH LLC	418 N ERIE ST	TOLEDO OH	43624
1502989	LAW OFFICES OF STEVIN J GROTH LLC AN OHI	418 N ERIE ST	TOLEDO OH	43624
1502987	PIPOLY JOSEF	418 N ERIE ST	TOLEDO OH	43624
1502988	MILLER RYAN M	418 N ERIE ST	TOLEDO OH	43624
1502986	TOLEDO LEGAL BUILDING LTDAN OHIO LIMITED	418 N ERIE ST	TOLEDO OH	43624
1549011	ONE STOP GROCERY STORE LLC	421 N HURON ST	TOLEDO OH	43604
1547884	300 MADISON BUILDING LLC AN OHIO LIMITED	421 N SUPERIOR ST	TOLEDO OH	43604
1548007	300 MADISON BUILDING LLC AN OHIO LIMITED	422 N HURON ST	TOLEDO OH	43604
1547844	CITY OF TOLEDO	422 N SUPERIOR ST	TOLEDO OH	43604
1547887	300 MADISON BUILDING LLC AN OHIO LIMITED	425 N SUPERIOR ST	TOLEDO OH	43604
1547841	NICOSIA CO AN OH GEN PT	426 N SUPERIOR ST	TOLEDO OH	43604
1549007	ST. PAUL'S EVANGELICAL LUTHERAN CHURCH	427 N HURON ST	TOLEDO OH	43604
1547837	NICOSIA CO AN OH GEN PT	428 N SUPERIOR ST	TOLEDO OH	43604
1549004	ST. PAUL'S EVANGELICAL LUTHERAN CHURCH	429 N HURON ST	TOLEDO OH	43604
1547891	300 MADISON BUILDING LLC AN OHIO LIMITED	429 N SUPERIOR ST	TOLEDO OH	43604
1549031	ST PAULS EVANGELICAL LUTHERAN CHURCH	430 N ERIE ST	TOLEDO OH	43602
1549032	ST PAULS EVANGELICAL LUTHERAN CHURCH	430 N ERIE ST	TOLEDO OH	43624
1547827	STLIANIDES FRIXOS	430 N SUPERIOR ST	TOLEDO OH	43604
1547831	CROAK REAL ESTATE DEVELOPMENT LLC	432 N SUPERIOR ST	TOLEDO OH	43604
1549001	ST. PAUL'S EVANGELICAL LUTHERAN CHURCH	433 N HURON ST	TOLEDO OH	43604
1549044	ST PAULS EVAN LUTH CH	434 N ERIE ST	TOLEDO OH	43624
1548997	ST. PAUL'S EVANGELICAL LUTHERAN CHURCH	435 N HURON ST	TOLEDO OH	43604
1214834	CITY OF TOLEDO	435 N ST CLAIR ST	TOLEDO OH	43604
1547897	300 MADISON BUILDING LLC AN OHIO LIMITED	435 N SUPERIOR ST	TOLEDO OH	43604
1547834	CROAK REAL ESTATE DEVELOPMENT LLC	436 N SUPERIOR ST	TOLEDO OH	43602
1547894	300 MADISON BUILDING LLC AN OHIO LIMITED	437 N SUPERIOR ST	TOLEDO OH	43604
1549041	CITY OF TOLEDO	444 N ERIE ST	TOLEDO OH	43624

1455949	FIRST TDT LLC	444 N SUMMIT ST	TOLEDO OH	43566
1215957	ROOT FAMILY INVESTMENTS LTD AN OHIO LIM	5 N ERIE ST	TOLEDO OH	43624
1215207	MIMG XXIV COMMODORE PERRYLLC A COLORADO	502 N SUPERIOR ST	TOLEDO OH	43604
1547987	300 MADISON BUILDING LLC AN OHIO LIMITED	540 N HURON ST	TOLEDO OH	43604
1216051	IBC INC AN OHIO CORPORATION	8 N ONTARIO ST	TOLEDO OH	43624
1214017	8 NORTH ST CLAIR STREET VENTURES LLC	8 N ST CLAIR ST	TOLEDO OH	43604
1214018	8 NORTH ST CLAIR STREET VENTURES LLC	8 N ST CLAIR ST	TOLEDO OH	43604
1215647	9 NORTH HURON PARTNERS, LLC	9 N HURON ST	TOLEDO OH	43604
1240415	HENSVILLE IMPROVEMENTS LLC AN OHIO LIMIT	9 N ST CLAIR ST	TOLEDO OH	43604
1240400	HENSVILLE IMPROVEMENTS LLC AN OHIO LIMIT	9 N ST CLAIR ST	TOLEDO OH	43604
1542647	GENMIC LLC	900 N SUMMIT ST	TOLEDO OH	43604
1542661	GENMIC LLC	912 N SUMMIT ST	TOLEDO OH	43604
1543231	JES NWO INC AN OHIO CORPORATION	915 N SUMMIT ST	TOLEDO OH	43604
1543217	FEN ENTERPRISES LLC	927 N SUMMIT ST	TOLEDO OH	43604
1543214	RUMPF RIVER VIEW LLC	933 N SUMMIT ST	TOLEDO OH	43604
1543207	TOLEDO SUMMIT, LLC	937 N SUMMIT ST	TOLEDO OH	43604
1887523	WHITESIDE REGIS CHARLES	110 OTTAWA ST	TOLEDO OH	43602
1887516	METZGER GARY D TRUSTEE	110 OTTAWA ST	TOLEDO OH	43602
1887527	O'LOUGHLIN RUTH ANN	110 OTTAWA ST	TOLEDO OH	43602
1887515	GAUGER VICTOR A JR & NANCY B (ORSURVTC)	110 OTTAWA ST	TOLEDO OH	43602
1887524	SNYDER MICHAEL D & DARLENE M	110 OTTAWA ST	TOLEDO OH	43602
1887521	PFITZER DANIEL L	110 OTTAWA ST	TOLEDO OH	43602
1887518	OHLEMACHER INVESTMENTS LLC	110 OTTAWA ST	TOLEDO OH	43602
1887520	CONNOLLY WILLIAM G & LINDA L	110 OTTAWA ST	TOLEDO OH	43602
1887514	SERNA DOMINGO JR	110 OTTAWA ST	TOLEDO OH	43602
1887512	STULL DEBRA S	110 OTTAWA ST	TOLEDO OH	43604
1887525	GOLEMBIEWSKI MARLENE ETAL	110 OTTAWA ST	TOLEDO OH	43602
1887529	HARDEN MARTIN	110 OTTAWA ST	TOLEDO OH	43602
1887519	SMITH CORINNE J	110 OTTAWA ST	TOLEDO OH	43602
1887526	HAUSFELD MICHAEL A & SUZANNE J	110 OTTAWA ST	TOLEDO OH	43604
1887533	JOYCE THOMAS P	110 OTTAWA ST	TOLEDO OH	43602
1887530	GARFORTH PROPERTIES LTD	110 OTTAWA ST	TOLEDO OH	43602
1887513	MORALES LORI REMILY A	110 OTTAWA ST	TOLEDO OH	43602
1887532	BENGELA BENJAMIN M	110 OTTAWA ST	TOLEDO OH	43602
1887522	HALL RYAN J & KELSEY L	110 OTTAWA ST	TOLEDO OH	43602
1887517	PAUL JAMIE M TR OF JAMIE M PAUL LIVING	110 OTTAWA ST	TOLEDO OH	43604
1887531	WRIGHT TIMOTHY A	110 OTTAWA ST	TOLEDO OH	43602
1887528	PAGE DANIELLE	110 OTTAWA ST	TOLEDO OH	43602
1156824	APPLOCATIONS LLC AN OHIO LLC	140 OTTAWA ST	TOLEDO OH	43602
1542744	HORIZON INVESTMENT GROUP,LLC	206 PINE ST	TOLEDO OH	43604
1887507	RIVER WEST SUBDIVISON HOMEOWNERS	0 PRIVATE PL	TOLEDO OH	43604
1887744	TOLEDO-LUCAS COUNTY PORT AUTHORITY	0 RIVERSIDE DR	TOLEDO OH	43608
1200020	BERDAN LLC (THE)	1 S ERIE ST	TOLEDO OH	43604
1215731	BERDAN LLC (THE)	1 S ERIE ST	TOLEDO OH	43604
1216927	SIGNIFICANT OTHER PROPERTIES LTD AN OHIO	1 S ST CLAIR ST	TOLEDO OH	43604
1871457	CITY OF TOLEDO	1 S SUMMIT ST	TOLEDO OH	43602
1214357	JAG TAVERN INC AN OHIO CORPORATION	10 S ST CLAIR ST	TOLEDO OH	43602
1215281	10 SOUTH SUPERIOR LLC AN OHIO LIMITED LI	10 S SUPERIOR ST	TOLEDO OH	43602
1240397	RASCZYK ANTHONY ETAL	100 S HURON ST	TOLEDO OH	43602
1240374	SANDERS EUGENE T	100 S HURON ST	TOLEDO OH	43602
1240385	BELL ALEXIS	100 S HURON ST	TOLEDO OH	43602
1240377	CARPENTER SCOTT R & BETH A (ORSURVTC)	100 S HURON ST	TOLEDO OH	43602
1240389	SANFORD REAL ESTATE HOLDINGS LLC	100 S HURON ST	TOLEDO OH	43602
1240372	RAVICH JOSEPH M	100 S HURON ST	TOLEDO OH	43602
1240380	RENO ALLISON	100 S HURON ST	TOLEDO OH	43602
1240382	CARLINGFORT PROPERTIES LLC	100 S HURON ST	TOLEDO OH	43602
1240387	CHAUDHARY HALEEM N	100 S HURON ST	TOLEDO OH	43602
1240391	RUMPF RIVER VIEW LLC AN OHIO LLC	100 S HURON ST	TOLEDO OH	43602
1240395	MCHUGH MARCUS J	100 S HURON ST	TOLEDO OH	43602
1240381	BROWN COURTNEY RENEE	100 S HURON ST	TOLEDO OH	43602
1240390	SANDERS MICHAEL F	100 S HURON ST	TOLEDO OH	43602

1240393	LYNCH- BINARD HOLDINGS LLC	100 S HURON ST	TOLEDO OH	43602
1240388	GARFORTH PROPERTIES LTD	100 S HURON ST	TOLEDO OH	43602
1240392	KELLEY KATHRYN LEE	100 S HURON ST	TOLEDO OH	43602
1240394	KONOPKA GREGORY	100 S HURON ST	TOLEDO OH	43602
1240376	SPARKS WILLIAM & SONYA ANN ORSURVTC	100 S HURON ST	TOLEDO OH	43602
1240379	DURAN FELICIA A	100 S HURON ST	TOLEDO OH	43602
1240371	GRIVANOS PERICLES S & EMILY L (ORSURVTC)	100 S HURON ST	TOLEDO OH	43604
1240373	WELDON KYLE W	100 S HURON ST	TOLEDO OH	43602
1240386	KILLIAN JAMES R	100 S HURON ST	TOLEDO OH	43602
1240378	GRIVANOS PERICLES S	100 S HURON ST	TOLEDO OH	43604
1240383	PETEE RHYS J	100 S HURON ST	TOLEDO OH	43602
1240375	BRICE GARY & MADALYN D	100 S HURON ST	TOLEDO OH	43602
1240396	TANIOS MINA B	100 S HURON ST	TOLEDO OH	43602
1240384	GLASSMOYER THOMAS H SR & SHARON M	100 S HURON ST	TOLEDO OH	43602
1217007	JACOR BROADCASTING CORP.,AN OH CORP.	102 S ST CLAIR ST	TOLEDO OH	43609
1217017	JACOR BROADCASTING CORP.,AN OH CORP.	108 S ST CLAIR ST	TOLEDO OH	43609
1224961	KWIK PARKING INC AN OHIOCORPORATION	111 S ERIE ST	TOLEDO OH	43602
1217165	AMA SUPERIOR LLC AN OH LIMITED LIABILITY	111 S HURON ST	TOLEDO OH	43602
1217164	AMA SUPERIOR, LLC AN OHIOLIMITED LIABILI	111 S HURON ST	TOLEDO OH	43602
1871537	MIDTOWN PROP	111 S SUMMIT ST	TOLEDO OH	43602
1217061	NOBLE BROADCAST OF TOLEDOINC	111 S SUPERIOR ST	TOLEDO OH	43602
1217021	WAREHOUSE PARTNERS LTD	112 S ST CLAIR ST	TOLEDO OH	43602
1217067	NOBLE BROADCAST OF TOLEDOINC	113 S SUPERIOR ST	TOLEDO OH	43602
1224964	ABCO FIRE PROPERTIES LLC A LIMITED LIABI	115 S ERIE ST	TOLEDO OH	43602
1217167	AMA SUPERIOR LLC AN OHIO LLC	115 S HURON ST	TOLEDO OH	43602
1871614	CITY OF TOLEDO	115 S SUMMIT ST	TOLEDO OH	43604
1217065	JACOR BROADCASTING CORP.,AN OHIO CORP.	117 S SUPERIOR ST	TOLEDO OH	43604
1217117	AMA SUPERIOR, LLC AN OHIOLIMITED LIABILI	118 S SUPERIOR ST	TOLEDO OH	43602
1217027	WAREHOUSE PARTNERS LTD	120 S ST CLAIR ST	TOLEDO OH	43602
1200008	WAREHOUSE PARTNERS LTD	122 S ST CLAIR ST	TOLEDO OH	43602
1217031	WAREHOUSE PARTNERS LTD	122 S ST CLAIR ST	TOLEDO OH	43602
1217103	MARCK JOSEPH	123 S HURON ST	TOLEDO OH	43602
1217102	MARCK JOSEPH	123 S HURON ST	TOLEDO OH	43602
1217101	IBC INC AN OH CORP	124 S SUPERIOR ST	TOLEDO OH	43602
1224974	ABCO FIRE PROPERTIES LLC A LIMITED LIABI	127 S ERIE ST	TOLEDO OH	43602
1871761	ZARICK MONTE	128 S ST CLAIR ST	TOLEDO OH	43602
1217084	IBC INC AN OH CORP	129 S HURON ST	TOLEDO OH	43602
1871467	CITY OF TOLEDO	13 S SUMMIT ST	TOLEDO OH	43602
1871484	CITY OF TOLEDO	13 S SUMMIT ST	TOLEDO OH	43604
1224977	ABCO FIRE PROPERTIES LLC A LIMITED LIABI	131 S ERIE ST	TOLEDO OH	43602
1224981	O'CONNELL PAMELA E	139 S ERIE ST	TOLEDO OH	43602
1217074	139 SOUTH HURON LLC	139 S HURON ST	TOLEDO OH	43615
1215977	RKKP LLC, A MICHIGAN LIMITED LIABILITY C	14 S ERIE ST	TOLEDO OH	43602
1215284	COCHRANE PROPERTIES OF OHIO LLC AN OHIO	14 S SUPERIOR ST	TOLEDO OH	43602
1871444	OKDIE MICHAEL (TRUSTEE)	140 S SUPERIOR ST	TOLEDO OH	43602
1224894	KIELY JOHN	144 S HURON ST	TOLEDO OH	43604
1224987	O'CONNELL PAMELA	145 S ERIE ST	TOLEDO OH	43602
1887483	CRYAN MEGAN	145 S ST CLAIR ST	TOLEDO OH	43604
1887496	WORRASANGASILPA KEVIN W	145 S ST CLAIR ST	TOLEDO OH	43604
1887596	REITER MARK R	145 S ST CLAIR ST	TOLEDO OH	43604
1887474	BEAMER LTD AN OHIO LIMITED LIABILITY COM	145 S ST CLAIR ST	TOLEDO OH	43604
1887486	SHRADER THOMAS J	145 S ST CLAIR ST	TOLEDO OH	43604
1887501	RANSOM MICHAEL W	145 S ST CLAIR ST	TOLEDO OH	43604
1887607	CLARK LARRY C & DENISE	145 S ST CLAIR ST	TOLEDO OH	43604
1887630	NOVAK RONALD P	145 S ST CLAIR ST	TOLEDO OH	43604
1887477	HARGER NATHANIEL A	145 S ST CLAIR ST	TOLEDO OH	43604
1887593	KEEFER TIMOTHY R & KELLY R CHILDRESS	145 S ST CLAIR ST	TOLEDO OH	43604
1887480	JOSEPH PAUL D	145 S ST CLAIR ST	TOLEDO OH	43604
1887591	GOLDMAN STEPHEN L TRUSTEE	145 S ST CLAIR ST	TOLEDO OH	43604
1887628	RANSOM MICHAEL W	145 S ST CLAIR ST	TOLEDO OH	43604
1887484	JESIONOWSKI MICHAEL T & ERIN M	145 S ST CLAIR ST	TOLEDO OH	43604

1887500	ULERY DAVID	145 S ST CLAIR ST	TOLEDO OH	43604
1887502	LINK LEO C & MEGAN L	145 S ST CLAIR ST	TOLEDO OH	43604
1887594	RAAD KRISTEN KEHOE & JOHN J (ORSURVTC)	145 S ST CLAIR ST	TOLEDO OH	43604
1887639	MALHOI IAN ETAL	145 S ST CLAIR ST	TOLEDO OH	43604
1887503	NOVAK RONALD P	145 S ST CLAIR ST	TOLEDO OH	43604
1887602	GALL WILLIAM J	145 S ST CLAIR ST	TOLEDO OH	43604
1887618	MCGHEE RAMONDA D	145 S ST CLAIR ST	TOLEDO OH	43604
1887493	TOTH ERIC J	145 S ST CLAIR ST	TOLEDO OH	43604
1887504	MALHOI IAN ETAL	145 S ST CLAIR ST	TOLEDO OH	43604
1887505	LINDSLEY ERIC E ETAL	145 S ST CLAIR ST	TOLEDO OH	43604
1887597	HARGER NATHANIEL A	145 S ST CLAIR ST	TOLEDO OH	43604
1887601	CARR KEVIN	145 S ST CLAIR ST	TOLEDO OH	43604
1887603	CRYAN MEGAN	145 S ST CLAIR ST	TOLEDO OH	43604
1887467	GOLDMAN STEPHEN L TRUSTEE	145 S ST CLAIR ST	TOLEDO OH	43604
1887617	MORRIS MICHAEL J & KATRIAA	145 S ST CLAIR ST	TOLEDO OH	43604
1887629	LINK LEO C & MEGAN L	145 S ST CLAIR ST	TOLEDO OH	43604
1887490	MORRIS MICHAEL J & KATRIAA	145 S ST CLAIR ST	TOLEDO OH	43604
1887492	FIZELL TIMOTHY & KIMBERLY FIZELL	145 S ST CLAIR ST	TOLEDO OH	43604
1887498	PICKETT MIKE J	145 S ST CLAIR ST	TOLEDO OH	43604
1887621	CLAUSING GREGORY R	145 S ST CLAIR ST	TOLEDO OH	43604
1887478	BLAUFUSS JOHN & JOCELYN	145 S ST CLAIR ST	TOLEDO OH	43604
1887479	HARTTEN JULIE L	145 S ST CLAIR ST	TOLEDO OH	43604
1887506	FARAHANI SAMIRA VASHEGHANI	145 S ST CLAIR ST	TOLEDO OH	43604
1887595	BEAMER LTD AN OHIO LIMITED LIABILITY COM	145 S ST CLAIR ST	TOLEDO OH	43604
1887608	MCCULLUMSMITH ROBERT E	145 S ST CLAIR ST	TOLEDO OH	43604
1887624	CARSON MARY J	145 S ST CLAIR ST	TOLEDO OH	43604
1887625	PICKETT MIKE J	145 S ST CLAIR ST	TOLEDO OH	43604
1887626	NIGHTINGALE ADAM S	145 S ST CLAIR ST	TOLEDO OH	43604
1887475	REITER MARK R	145 S ST CLAIR ST	TOLEDO OH	43604
1887487	CLARK LARRY C & DENISE	145 S ST CLAIR ST	TOLEDO OH	43604
1887489	GALL TIFFANY P	145 S ST CLAIR ST	TOLEDO OH	43604
1887627	ULERY DAVID	145 S ST CLAIR ST	TOLEDO OH	43604
1887473	RAAD KRISTEN KEHOE & JOHN J (ORSURVTC)	145 S ST CLAIR ST	TOLEDO OH	43604
1887476	HARGER NATHANIEL A	145 S ST CLAIR ST	TOLEDO OH	43604
1887598	HARGER NATHANIEL A	145 S ST CLAIR ST	TOLEDO OH	43604
1887494	CLAUSING GREGORY R	145 S ST CLAIR ST	TOLEDO OH	43604
1887605	MASCARENO BRIAN E	145 S ST CLAIR ST	TOLEDO OH	43604
1887640	LINDSLEY ERIC E ETAL	145 S ST CLAIR ST	TOLEDO OH	43604
1887499	NIGHTINGALE ADAM S	145 S ST CLAIR ST	TOLEDO OH	43604
1887604	JESIONOWSKI MICHAEL T & ERIN M	145 S ST CLAIR ST	TOLEDO OH	43604
1887472	LAVILLA JOHN T	145 S ST CLAIR ST	TOLEDO OH	43604
1887623	WORRASANGASILPA KEVIN W	145 S ST CLAIR ST	TOLEDO OH	43604
1887469	TRZCINSKI MATTHEW E	145 S ST CLAIR ST	TOLEDO OH	43604
1887471	MARWAHA VIJAY K & PUNIT	145 S ST CLAIR ST	TOLEDO OH	43602
1887495	DAVIS BRANDON	145 S ST CLAIR ST	TOLEDO OH	43604
1887600	HARTTEN JULIE L	145 S ST CLAIR ST	TOLEDO OH	43604
1887482	GALL WILLIAM J	145 S ST CLAIR ST	TOLEDO OH	43604
1887485	MASCARENO BRIAN E	145 S ST CLAIR ST	TOLEDO OH	43604
1887491	MCGHEE RAMONDA D	145 S ST CLAIR ST	TOLEDO OH	43604
1887497	CARSON MARY J	145 S ST CLAIR ST	TOLEDO OH	43604
1887592	STIEHM SUSANNAH	145 S ST CLAIR ST	TOLEDO OH	43604
1887599	BLAUFUSS JOHN & JOCELYN	145 S ST CLAIR ST	TOLEDO OH	43604
1887481	CARR KEVIN	145 S ST CLAIR ST	TOLEDO OH	43604
1887638	FARAHANI SAMIRA VASHEGHANI	145 S ST CLAIR ST	TOLEDO OH	43604
1887468	STIEHM SUSANNAH	145 S ST CLAIR ST	TOLEDO OH	43604
1887470	KEEFER TIMOTHY R & KELLY R CHILDRESS	145 S ST CLAIR ST	TOLEDO OH	43604
1887616	GALL TIFFANY P	145 S ST CLAIR ST	TOLEDO OH	43604
1887606	SHRADER THOMAS J	145 S ST CLAIR ST	TOLEDO OH	43604
1887620	TOTH ERIC J	145 S ST CLAIR ST	TOLEDO OH	43604
1887622	DAVIS BRANDON	145 S ST CLAIR ST	TOLEDO OH	43604
1887488	MCCULLUMSMITH ROBERT E	145 S ST CLAIR ST	TOLEDO OH	43604

1887619	FIZELL TIMOTHY & KIMBERLY FIZELL	145 S ST CLAIR ST	TOLEDO OH	43604
1224991	O'CONNELL PAMELA	147 S ERIE ST	TOLEDO OH	43602
1216014	15 SOUTH ONTARIO LLC AN OHIO LLC	15 S ONTARIO ST	TOLEDO OH	43602
1216021	15 SOUTH ONTARIO LLC AN OHIO LLC	15 S ONTARIO ST	TOLEDO OH	43602
1216938	OLD 2 NEW VENTURES LTD	15 S ST CLAIR ST	TOLEDO OH	43602
1214274	GALLIERS REAL ESTATE, LLC, AN OHIO LIMIT	15 S SUPERIOR ST	TOLEDO OH	43604
1156901	SWAN CRICK RENTALS LLC ANOHIO LLC	151 S ST CLAIR ST	TOLEDO OH	43602
1871801	PLATFORM II SUPERIOR LLC AN ILLINOIS LIMITED	155 S SUPERIOR ST	TOLEDO OH	43602
1871781	PLATFORM II SUPERIOR LLC AN ILLINOIS LIMITED	155 S SUPERIOR ST	TOLEDO OH	43602
1871471	CITY OF TOLEDO	17 S SUMMIT ST	TOLEDO OH	43604
1214277	GALLIERS REAL ESTATE, LLC, AN OHIO LIMIT	17 S SUPERIOR ST	TOLEDO OH	43604
1157124	BENNETT ENTERPRISES LLC AN OHIO LLC	175 S SUMMIT ST	TOLEDO OH	43602
1157117	BENNETT ENTERPRISES LLC AN OHIO LLC	175 S SUMMIT ST	TOLEDO OH	43605
1157101	CITY OF TOLEDO	176 S SUMMIT ST	TOLEDO OH	43602
1215291	HORN HI-YO LLC AN OHIO LIMITED LIABILITY	18 S SUPERIOR ST	TOLEDO OH	43602
1216951	WILSON JOHN M & ARLENE SINGER	19 S ST CLAIR ST	TOLEDO OH	43602
1214284	BRETTON, INC., AN OH CORP	19 S SUPERIOR ST	TOLEDO OH	43604
1156991	B J KOSMIDER REALTY LLC AN OHIO LIMITED	195 S ST CLAIR ST	TOLEDO OH	43602
1215971	ROOT FAMILY INVESTMENTS LTD AN OHIO LIM	2 S ERIE ST	TOLEDO OH	43602
1214374	JAG TAVERN INC AN OHIO CORPORATION	2 S ST CLAIR ST	TOLEDO OH	43602
1215664	20 SOUTH HURON LLC A MICHIGAN LLC	20 S HURON ST	TOLEDO OH	43602
1216297	CAIRL ROBERT W JR & JANE A	20 S ONTARIO ST	TOLEDO OH	43602
1214354	JAG TAVERN INC AN OHIO CORPORATION	20 S ST CLAIR ST	TOLEDO OH	43602
1216944	BEHNFELDT VIRGIL E & MELVIN JEAN AS CO-TR	21 S ST CLAIR ST	TOLEDO OH	43602
1871477	CITY OF TOLEDO	21 S SUMMIT ST	TOLEDO OH	43604
1215667	COMMODORE ISLAND PROPERTIES, LTD AN OH L	22 S HURON ST	TOLEDO OH	43602
1214351	MARKEY'S AUDIO/VISUAL INC	22 S ST CLAIR ST	TOLEDO OH	43602
1215724	RKKP LLC, A MICHIGAN LIMITED LIABILITY C	23 S ERIE ST	TOLEDO OH	43602
1215354	ROOT FAMILY INVESTMENTS LTD AN OHIO LIM	23 S HURON ST	TOLEDO OH	43602
1216947	SULLIVAN PAUL R & JACQUELINE K	23 S ST CLAIR ST	TOLEDO OH	43602
1216948	SULLIVAN PAUL R & JACQUELINE K	23 S ST CLAIR ST	TOLEDO OH	43604
1214281	GALLIERS REAL ESTATE, LLC, AN OHIO LIMIT	23 S SUPERIOR ST	TOLEDO OH	43604
1215671	COMMODORE ISLAND PROPERTIES, LTD AN OH L	24 S HURON ST	TOLEDO OH	43602
1215294	HORN HI-YO LLC AN OHIO LIMITED LIABILITY	24 S SUPERIOR ST	TOLEDO OH	43602
1215347	JAG TAVERN INC AN OHIO CORPORATION	25 S HURON ST	TOLEDO OH	43602
1216007	15 SOUTH ONTARIO LLC AN OHIO LLC	25 S ONTARIO ST	TOLEDO OH	43602
1216954	OLD 2 NEW VENTURES LTD	25 S ST CLAIR ST	TOLEDO OH	43602
1216955	OLD 2 NEW VENTURES LTD	25 S ST CLAIR ST	TOLEDO OH	43602
1216975	OLD 2 NEW VENTURES LTD	25 S ST CLAIR ST	TOLEDO OH	43602
1216961	OLD 2 NEW VENTURES LTD	25 S ST CLAIR ST	TOLEDO OH	43602
1216962	OLD 2 NEW VENTURES LTD	25 S ST CLAIR ST	TOLEDO OH	43602
1216974	OLD 2 NEW VENTURES LTD	25 S ST CLAIR ST	TOLEDO OH	43602
1214287	GALLIERS REAL ESTATE, LLC, AN OHIO LIMIT	25 S SUPERIOR ST	TOLEDO OH	43604
1214347	MARKEY'S AUDIO/VISUAL INC	26 S ST CLAIR ST	TOLEDO OH	43602
1214344	M.E. LLC	28 S ST CLAIR ST	TOLEDO OH	43602
1215721	MANHATTAN BUILDING COMPANY AN OHIO CORPORATION	29 S ERIE ST	TOLEDO OH	43602
1217491	BAKERY BUILDING LLC A MICHIGAN LIMITED	29 S MICHIGAN ST	TOLEDO OH	43602
1216304	CAIRL ROBERT W JR & JANE A	30 S ONTARIO ST	TOLEDO OH	43602
1216001	15 SOUTH ONTARIO LLC AN OHIO LLC	31 S ONTARIO ST	TOLEDO OH	43602
1215681	COMMODORE ISLAND PROPERTIES, LTD AN OH L	32 S HURON ST	TOLEDO OH	43602
1215341	GUSSES GEORGE TRUSTEE	33 S HURON ST	TOLEDO OH	43602
1215988	STANDART LOFTS LLC AN OHIO LLC	34 S ERIE ST	TOLEDO OH	43602
1215987	STANDART LOFTS LLC AN OHIO LLC	34 S ERIE ST	TOLEDO OH	43602
1215677	MANHATTAN BUILDING COPMANY (THE)	34 S HURON ST	TOLEDO OH	43602
1215301	HORN HI-YO LLC AN OHIO LIMITED LIABILITY	34 S SUPERIOR ST	TOLEDO OH	43602
1215717	KWIK PARKING INC AN OHIOCORPORATION	35 S ERIE ST	TOLEDO OH	43602
1215684	KWIK PARKING INC AN OHIO CORPORATION	36 S HURON ST	TOLEDO OH	43605
1215704	ROOT CAROLA KIDD- TRUSTEE OF THE CAROLA	37 S ERIE ST	TOLEDO OH	43602
1215321	GUSSES GEORGE TRUSTEE	37 S HURON ST	TOLEDO OH	43602
1215687	KWIK PARKING INC AN OHIO CORPORATION	38 S HURON ST	TOLEDO OH	43602
1217474	BAKERY BUILDING LLC A MICHIGAN LIMITED	39 S MICHIGAN ST	TOLEDO OH	43602

1215997	15 SOUTH ONTARIO LLC AN OHIO LLC	39 S ONTARIO ST	TOLEDO OH	43602
1871487	CITY OF TOLEDO	39 S SUMMIT ST	TOLEDO OH	43604
1215307	IBC INC AN OH CORP	42 S SUPERIOR ST	TOLEDO OH	43602
1215311	IBC INC AN OH CORP	42 S SUPERIOR ST	TOLEDO OH	43602
1215334	43 SOUTH HURON , LLC	43 S HURON ST	TOLEDO OH	43602
1216997	OLD 2 NEW VENTURES LTD	43 S ST CLAIR ST	TOLEDO OH	43602
1214401	KMOS LTD AN OHIO LLC	44 S ST CLAIR ST	TOLEDO OH	43604
1214391	KMOS LTD AN OHIO LLC	44 S ST CLAIR ST	TOLEDO OH	43604
1214386	SUNDVOLD RYNE A & ARDEN PONTASCH	44 S ST CLAIR ST	TOLEDO OH	43604
1214388	ZEHAIM MOUHAMAD Y ADOURE-	44 S ST CLAIR ST	TOLEDO OH	43604
1214402	KMOS LTD AN OHIO LLC	44 S ST CLAIR ST	TOLEDO OH	43604
1214385	KMOS LTD AN OHIO LLC	44 S ST CLAIR ST	TOLEDO OH	43604
1214394	WAGENHAUSER MATTHEW D	44 S ST CLAIR ST	TOLEDO OH	43604
1214397	KMOS LTD AN OHIO LLC	44 S ST CLAIR ST	TOLEDO OH	43604
1214398	KMOS LTD AN OHIO LLC	44 S ST CLAIR ST	TOLEDO OH	43604
1214395	SCHAETZKE ANDREW J ETAL	44 S ST CLAIR ST	TOLEDO OH	43604
1214387	CARTER CHRISTOPHER C & THERESE A KING	44 S ST CLAIR ST	TOLEDO OH	43604
1214389	ENTENMAN JANIS L	44 S ST CLAIR ST	TOLEDO OH	43604
1214392	KMOS LTD AN OHIO LLC	44 S ST CLAIR ST	TOLEDO OH	43604
1214390	KATO KENGO	44 S ST CLAIR ST	TOLEDO OH	43604
1214399	KMOS LTD AN OHIO LLC	44 S ST CLAIR ST	TOLEDO OH	43604
1214400	KMOS LTD AN OHIO LLC	44 S ST CLAIR ST	TOLEDO OH	43604
1214393	TUCKER-GRAY KIM & LISA (ORSURVTC)	44 S ST CLAIR ST	TOLEDO OH	43604
1214396	KMOS LTD AN OHIO LLC	44 S ST CLAIR ST	TOLEDO OH	43604
1217004	OLD 2 NEW VENTURES LTD	45 S ST CLAIR ST	TOLEDO OH	43602
1871491	CITY OF TOLEDO	45 S SUMMIT ST	TOLEDO OH	43604
1217001	OLD 2 NEW VENTURES LTD	47 S ST CLAIR ST	TOLEDO OH	43602
1216307	BAKERY BUILDING LLC A MICHIGAN LIMITED	61 S ONTARIO ST	TOLEDO OH	43602
1214262	TONY PACKO'S TOLEDO LLC	7 S SUPERIOR ST	TOLEDO OH	43604
1215984	RKKP LLC, A MICHIGAN LIMITED LIABILITY C	8 S ERIE ST	TOLEDO OH	43602
1214381	JAG TAVERN INC AN OHIO CORPORATION	8 S ST CLAIR ST	TOLEDO OH	43602
1215271	ROOT FAMILY INVESTMENTS LTD AN OHIO LIMI	8 S SUPERIOR ST	TOLEDO OH	43604
1455970	CITY OF TOLEDO	1 SEAGATE	TOLEDO OH	43604
1455950	SEAGATE LAND PARTNERS LLC	1 SEAGATE	TOLEDO OH	43566
1455952	ONE SEAGATE PARTNERS LLC AN OHIO LIMITED	1 SEAGATE	TOLEDO OH	43566
1225304	CITY OF TOLEDO	1 SEAGATE R	TOLEDO OH	43604
1400008	PROMEDICA HEALTH SYSTEM INC AN OHIO NON	3 SEAGATE	TOLEDO OH	43604
1455958	PROMEDICA HEALTH SYSTEM INC AN OHIO NON	3 SEAGATE	TOLEDO OH	43604
1455967	TOLEDO AREA REGIONAL TRANSAUTHORITY	4 SEAGATE	TOLEDO OH	43604
1455963	GEORGE F EYDE FAMILY LLC	4 SEAGATE	TOLEDO OH	43604
1455965	GEORGE F EYDE FAMILY LLC	4 SEAGATE	TOLEDO OH	43604
1871510	LOUISVILLE TITLE AGENCY FOR NW OHIO INC	0 ST CLAIR ST	TOLEDO OH	43604
1216432	CITY OF TOLEDO	116 SUMMIT ST PED. BRIDGE	TOLEDO OH	43604
1213876	LUCAS COUNTY ECONOMIC DEVELOPMENT CORPOR	141 SUMMIT ST	TOLEDO OH	43604
1214836	TARTA	249 SUMMIT ST	TOLEDO OH	43604
1240101	TOLEDO-LUCAS COUNTY PORT AUTHORITY	333 SUMMIT ST	TOLEDO OH	43604
1455968	CITY OF TOLEDO	408 SUMMIT ST	TOLEDO OH	43604
1455969	CITY OF TOLEDO	408 SUMMIT ST	TOLEDO OH	43604
1455971	PROMEDICA DOWNTOWN CAMPUSLANDLORD LLC AN	408 SUMMIT ST	TOLEDO OH	43604
1455956	CITY OF TOLEDO	408 SUMMIT ST	TOLEDO OH	43604
1217877	CHESBROUGH INVESTMENT COMPANY LLC	112 10TH ST	TOLEDO OH	43624
1217884	CHESBROUGH INVESTMENT COMPANY LLC AN OHI	114 10TH ST	TOLEDO OH	43624
1217881	CHESBROUGH INVESTMENT COMPANY LLC AN OHI	116 10TH ST	TOLEDO OH	43624
1217894	CLOCK TOWER CAPITAL LLC	118 10TH ST	TOLEDO OH	43624
1217891	CLOCK TOWER CAPITAL LLC	120 10TH ST	TOLEDO OH	43624
1217887	CLOCK TOWER CAPITAL LLC	122 10TH ST	TOLEDO OH	43624
1217901	CLOCK TOWER CAPITAL LLC	124 10TH ST	TOLEDO OH	43624
1217897	CLOCK TOWER CAPITAL LLC	126 10TH ST	TOLEDO OH	43624
1217914	GMR & RRR PROPERTIES LTD AN OHIO LLC	210 10TH ST	TOLEDO OH	43624
1549681	MIDLAND AGENCY OF NORTHWEST OHIO TRUSTEE	214 10TH ST	TOLEDO OH	43624
1549677	MIDLAND AGENCY OF NORTHWEST OHIO TRUSTEE	222 10TH ST	TOLEDO OH	43624

1549671	MIDLAND AGENCY OF NORTHWEST OHIO TRUSTEE	226	10TH ST	TOLEDO	OH	43624
1549667	APPLOCATIONS LLC	232	10TH ST	TOLEDO	OH	43604
1549664	234 10TH LLC AN OHIO LIMITED LIABILITY C	234	10TH ST	TOLEDO	OH	43624
1240417	BOARD OF COUNTY COMMISSIONERS OF LUCAS C	0	WASHINGTON ST	TOLEDO	OH	43604
1240554	BOARD OF COUNTY COMMISSIONERS OF LUCAS C	0	WASHINGTON ST	TOLEDO	OH	43604
1214001	8 NORTH ST CLAIR STREET VENTURES LLC	318	WASHINGTON ST	TOLEDO	OH	43604
1214002	8 NORTH ST CLAIR STREET VENTURES LLC	318	WASHINGTON ST	TOLEDO	OH	43604
1240418	BOARD OF COUNTY COMMISSIONERS OF LUCAS C	406	WASHINGTON ST	TOLEDO	OH	43604
1200009	JAG TAVERN INC AN OHIO CORPORATION	407	WASHINGTON ST	TOLEDO	OH	43604
1214367	JAG TAVERN INC AN OHIO CORPORATION	407	WASHINGTON ST	TOLEDO	OH	43604
1214261	BENNETT GROWTH PROPERTIESLLC AN OHIO LIM	413	WASHINGTON ST	TOLEDO	OH	43604
1215367	ROOT FAMILY INVESTMENTS LTD AN OHIO LIMI	513	WASHINGTON ST	TOLEDO	OH	43604
1215641	3 SECONDS LLC	608	WASHINGTON ST	TOLEDO	OH	43604
1215747	MAUMEE RIVER ESTATES LLC AN OHIO LIMITED	614	WASHINGTON ST	TOLEDO	OH	43604
1215751	MAUMEE RIVER ESTATES LLC AN OHIO LIMITED	618	WASHINGTON ST	TOLEDO	OH	43604
1215951	ROOT FAMILY INVESTMENTS LTD AN OHIO LIMI	712	WASHINGTON ST	TOLEDO	OH	43624
1216034	TOL FIRE FIGHTERSLOC 92 BLDG CORP	714	WASHINGTON ST	TOLEDO	OH	43624
1216041	IBC INC AN OHIO CORPORATION	722	WASHINGTON ST	TOLEDO	OH	43624
1240469	BROWN CARLIANNE KAYE	745	WASHINGTON ST	TOLEDO	OH	43624
1240470	NEWTON JEFFREY C	745	WASHINGTON ST	TOLEDO	OH	43624
1240481	BACHMAN TYLER E & KIRSCH WILLIAM B (ORSURVTC)	745	WASHINGTON ST	TOLEDO	OH	43624
1240497	BARTLEY #703 LLC	745	WASHINGTON ST	TOLEDO	OH	43624
1240479	KHOIL LTD AN OHIO LIMITEDLIABILITY COMPA	745	WASHINGTON ST	TOLEDO	OH	43624
1240471	HUSS ALEC T & MICHAEL L (ORSURVTC)	745	WASHINGTON ST	TOLEDO	OH	43624
1240501	SHIPMAN NATHANIAL & KRISTIN	745	WASHINGTON ST	TOLEDO	OH	43624
1240459	LURIA DANIEL & NICHOLAS	745	WASHINGTON ST	TOLEDO	OH	43624
1240464	LOCKHART MARGARET J TRUSTEE	745	WASHINGTON ST	TOLEDO	OH	43624
1240475	MAGNER JEFFREY P	745	WASHINGTON ST	TOLEDO	OH	43624
1240489	GLASER ADAM W	745	WASHINGTON ST	TOLEDO	OH	43624
1240461	LIEWALD SUZANNE H & DANIEL (ORSURVTC)	745	WASHINGTON ST	TOLEDO	OH	43624
1240477	FUZINSKI STEPHEN	745	WASHINGTON ST	TOLEDO	OH	43624
1240473	FERRELL CHRISTOPHER L	745	WASHINGTON ST	TOLEDO	OH	43624
1240500	HAKEL KAREN E	745	WASHINGTON ST	TOLEDO	OH	43624
1240452	FISHER SOPHIA L	745	WASHINGTON ST	TOLEDO	OH	43624
1240463	SCHMIDT HEATHER N	745	WASHINGTON ST	TOLEDO	OH	43624
1240474	ZOGRAFIDES CHRISTOPHER A	745	WASHINGTON ST	TOLEDO	OH	43604
1240467	MARIZ FERNANDO T	745	WASHINGTON ST	TOLEDO	OH	43624
1240487	BUCK BRADLEY ET AL	745	WASHINGTON ST	TOLEDO	OH	43624
1240498	ZAKERI AHMAD A & JACQUELYN A (ORSURVTC)	745	WASHINGTON ST	TOLEDO	OH	43624
1240462	HEAD DOLORES S	745	WASHINGTON ST	TOLEDO	OH	43624
1240476	SINGH AJAY P	745	WASHINGTON ST	TOLEDO	OH	43624
1240482	RICHARDSON PATRICIA A TRUSTEE	745	WASHINGTON ST	TOLEDO	OH	43624
1240468	BROWN CARLIANNE K	745	WASHINGTON ST	TOLEDO	OH	43624
1240472	SANFORD REAL ESTATE HOLDINGS LLC	745	WASHINGTON ST	TOLEDO	OH	43624
1240478	HURLEY ANN	745	WASHINGTON ST	TOLEDO	OH	43624
1240483	VAUGHN RODNEY E	745	WASHINGTON ST	TOLEDO	OH	43624
1240454	STEINGASS CHRISTOPHER S	745	WASHINGTON ST	TOLEDO	OH	43624
1240456	SCHEURER LOGAN & WHITNEY (ORSURVTC)	745	WASHINGTON ST	TOLEDO	OH	43624
1240492	GERST HENRY J & DEBORAH A	745	WASHINGTON ST	TOLEDO	OH	43624
1240466	MILLER JACOB D	745	WASHINGTON ST	TOLEDO	OH	43624
1240457	LEONE DANIEL MICHAEL	745	WASHINGTON ST	TOLEDO	OH	43624
1240465	HAMLIN ROBERT CHAD	745	WASHINGTON ST	TOLEDO	OH	43624
1240480	SZABO ZACHERY ETAL	745	WASHINGTON ST	TOLEDO	OH	43624
1240486	SANFORD CHRIS JR	745	WASHINGTON ST	TOLEDO	OH	43624
1240499	SCHREIN CATHERINE T	745	WASHINGTON ST	TOLEDO	OH	43624
1240450	FUZINSKI STEPHEN	745	WASHINGTON ST	TOLEDO	OH	43604
1240451	YAKUMITHIS ANNA MARIA	745	WASHINGTON ST	TOLEDO	OH	43624
1240493	CULLMAN BENJAMIN	745	WASHINGTON ST	TOLEDO	OH	43624
1240496	BARTLEY #702 LLC	745	WASHINGTON ST	TOLEDO	OH	43624
1240488	SOTO RAFAEL	745	WASHINGTON ST	TOLEDO	OH	43624
1240458	VEIGEL JUSTIN W	745	WASHINGTON ST	TOLEDO	OH	43624

1240490	CROAK ERIC T ETAL (OR SURVTC)	745 WASHINGTON ST	TOLEDO OH	43624
1240495	PARTEE ERIC N & SUZANNE L	745 WASHINGTON ST	TOLEDO OH	43624
1240484	GROVER ERIC T	745 WASHINGTON ST	TOLEDO OH	43624
1240455	ULRICH STEVE	745 WASHINGTON ST	TOLEDO OH	43624
1240453	WEISBROD THOMAS L & KIM A TRUSTEES OF THE THOMAS	745 WASHINGTON ST	TOLEDO OH	43624
1240460	ENSIGN DOUGLAS WARD	745 WASHINGTON ST	TOLEDO OH	43624
1240485	LAMB ERNEST	745 WASHINGTON ST	TOLEDO OH	43604
1240491	KELLEY RYAN P	745 WASHINGTON ST	TOLEDO OH	43624
1240494	MACMILLAN STEPHEN M	745 WASHINGTON ST	TOLEDO OH	43624
1217487	AMERCO REAL ESTATE COMPANY	801 WASHINGTON ST	TOLEDO OH	43602
1216245	COLUMBIA GAS OF OHIO	810 WASHINGTON ST	TOLEDO OH	43604
1216246	CITY OF TOLEDO	810 WASHINGTON ST	TOLEDO OH	43604
1200006	LORENZEN COMPANY LLC AN OHIO LLC THE	814 WASHINGTON ST	TOLEDO OH	43604
1217527	LORENZEN COMPANY LLC AN OHIO LLC THE	814 WASHINGTON ST	TOLEDO OH	43604
1899332	PENNSYLVANIA LINES LLC	0 WATER ST	TOLEDO OH	0
1224998	MIDLAND AGENCY OF NORTHWEST OHIO, INC	0 WATER ST	TOLEDO OH	43604
1542921	ARVANITIS THEODORE ETAL	1024 WATER ST	TOLEDO OH	43604
1224997	CITY OF TOLEDO	120 WATER ST	TOLEDO OH	43604
1225087	CITY OF TOLEDO	224 WATER ST	TOLEDO OH	43604
1225243	CITY OF TOLEDO	320 WATER ST	TOLEDO OH	43604
1200019	PROMEDICA DOWNTOWN CAMPUSLANDLORD LLC AN	320 WATER ST	TOLEDO OH	43604
1225241	PROMEDICA DOWNTOWN CAMPUSLANDLORD LLC AN	320 WATER ST	TOLEDO OH	43604
1225242	PROMEDICA DOWNTOWN CAMPUSLANDLORD LLC AN	320 WATER ST	TOLEDO OH	43604
1547357	CITY OF TOLEDO	700 WATER ST	TOLEDO OH	43604
1547354	CITY OF TOLEDO	708 WATER ST	TOLEDO OH	43604
1213754	CITY OF TOLEDO	1 WORLD TRADE CENTER	TOLEDO OH	43604
1871424	CITY OF TOLEDO	1 WORLD TRADE CENTER	TOLEDO OH	43611
1871414	CITY OF TOLEDO	1 WORLD TRADE CENTER	TOLEDO OH	43611
01086032S	CONDO COMPLEX			
01086038S	CONDO COMPLEX			
01058022S	CONDO COMPLEX			
01904001S	CONDO COMPLEX			43604
01047017S	CONDO COMPLEX			
01059022S	CONDO COMPLEX			
07155009S	CONDO COMPLEX			
01557001S	CONDO COMPLEX			
01092023S	CONDO COMPLEX			