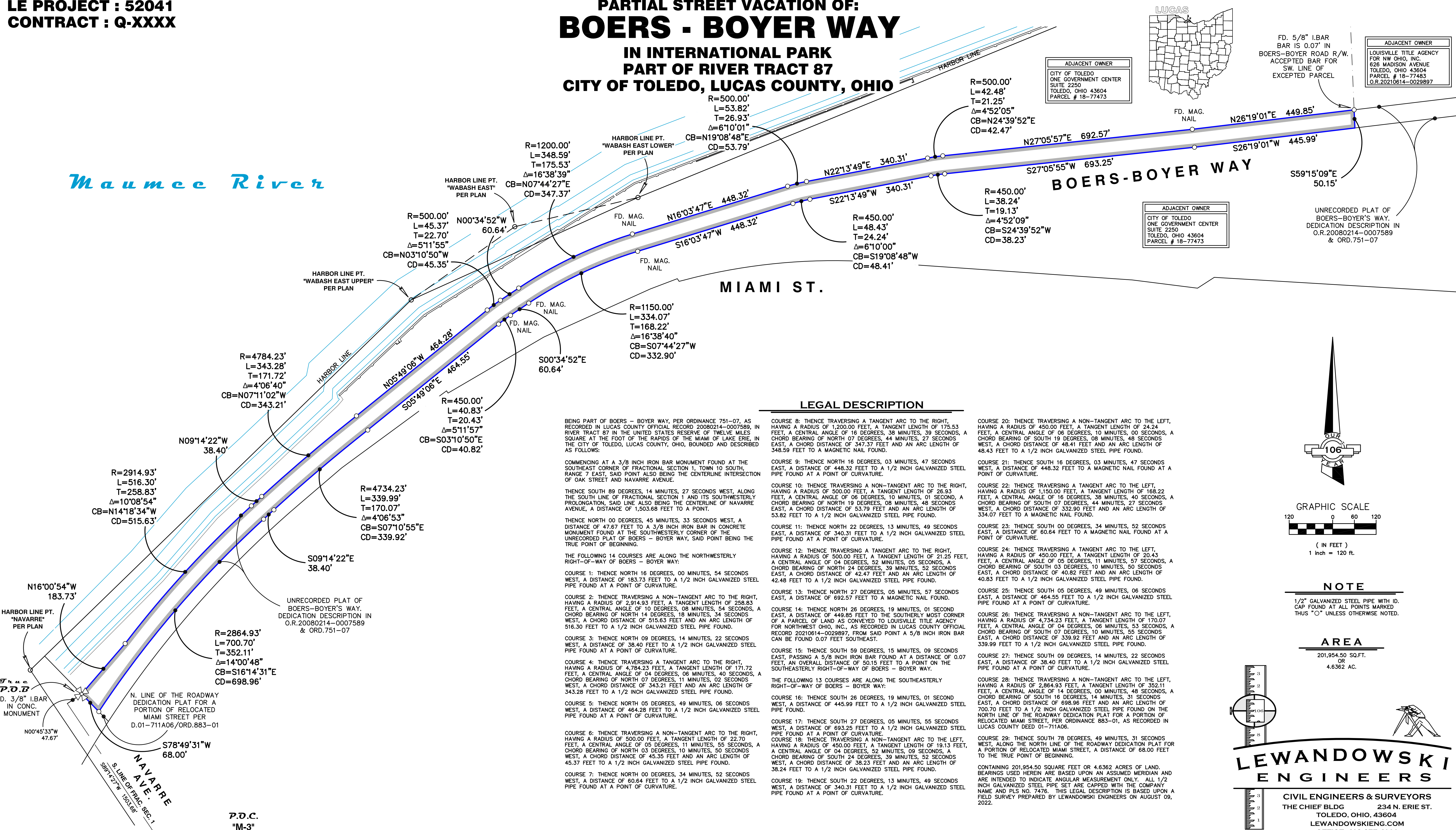


LE PROJECT : 52041
CONTRACT : Q-XXXX

PARTIAL STREET VACATION OF: **BOERS - BOYER WAY** IN INTERNATIONAL PARK PART OF RIVER TRACT 87 CITY OF TOLEDO, LUCAS COUNTY, OHIO



Maumee River



ADJACENT OWNER
CITY OF TOLEDO
ONE GOVERNMENT CENTER
SUITE 2250
TOLEDO, OHIO 43604
PARCEL # 18-77473

ADJACENT OWNER
LOUISVILLE TITLE AGENCY
FOR NW OHIO, INC.
626 MADISON AVENUE
TOLEDO, OHIO 43604
PARCEL # 19-77483
O.R.20210614-0028987

ADJACENT OWNER
CITY OF TOLEDO
ONE GOVERNMENT CENTER
SUITE 2250
TOLEDO, OHIO 43604
PARCEL # 18-77473

UNRECORDED PLAT OF
BOERS-BOYER'S WAY,
DEDICATION DESCRIPTION IN
O.R.20080214-0007589
& ORD.751-07

LEGAL DESCRIPTION

BEING PART OF BOERS - BOYER WAY, PER ORDINANCE 751-07, AS RECORDED IN LUCAS COUNTY OFFICIAL RECORD 20080214-0007589, IN RIVER TRACT 87 IN THE UNITED STATES RESERVE OF TWELVE MILES SQUARE AT THE FOOT OF THE RAPIDS OF THE MIAMI OF LAKE ERIE, IN THE CITY OF TOLEDO, LUCAS COUNTY, OHIO, BOUNDED AND DESCRIBED AS FOLLOWS:

COURSE 8: THENCE TRaversing A TANGENT ARC TO THE RIGHT, HAVING A RADIUS OF 1,200.00 FEET, A TANGENT LENGTH OF 175.53 FEET, A CENTRAL ANGLE OF 16 DEGREES, 38 MINUTES, 39 SECONDS, A CHORD BEARING OF NORTH 07 DEGREES, 44 MINUTES, 27 SECONDS EAST, A CHORD DISTANCE OF 347.37 FEET AND AN ARC LENGTH OF 348.59 FEET TO A MAGNETIC NAIL FOUND.

COURSE 9: THENCE NORTH 16 DEGREES, 03 MINUTES, 47 SECONDS EAST, A DISTANCE OF 448.32 FEET TO A 1/2 INCH GALVANIZED STEEL PIPE FOUND AT A POINT OF CURVATURE.

COURSE 10: THENCE TRaversing A NON-TANGENT ARC TO THE RIGHT, HAVING A RADIUS OF 500.00 FEET, A TANGENT LENGTH OF 26.93 FEET, A CENTRAL ANGLE OF 06 DEGREES, 10 MINUTES, 01 SECOND, A CHORD BEARING OF NORTH 19 DEGREES, 08 MINUTES, 49 SECONDS EAST, A CHORD DISTANCE OF 53.79 FEET AND AN ARC LENGTH OF 53.82 FEET TO A 1/2 INCH GALVANIZED STEEL PIPE FOUND.

COURSE 11: THENCE NORTH 22 DEGREES, 13 MINUTES, 49 SECONDS EAST, A DISTANCE OF 340.31 FEET TO A 1/2 INCH GALVANIZED STEEL PIPE FOUND AT A POINT OF CURVATURE.

COURSE 12: THENCE TRaversing A TANGENT ARC TO THE RIGHT, HAVING A RADIUS OF 500.00 FEET, A TANGENT LENGTH OF 21.25 FEET, A CENTRAL ANGLE OF 04 DEGREES, 52 MINUTES, 05 SECONDS, A CHORD BEARING OF NORTH 24 DEGREES, 39 MINUTES, 52 SECONDS EAST, A CHORD DISTANCE OF 42.47 FEET AND AN ARC LENGTH OF 42.48 FEET TO A 1/2 INCH GALVANIZED STEEL PIPE FOUND.

COURSE 13: THENCE NORTH 27 DEGREES, 05 MINUTES, 57 SECONDS EAST, A DISTANCE OF 692.25 FEET TO A MAGNETIC NAIL FOUND.

COURSE 14: THENCE NORTH 28 DEGREES, 19 MINUTES, 01 SECOND EAST, PASSING A 5/8 INCH IRON BAR FOUND AT A DISTANCE OF 0.07 FEET, A DISTANCE OF 449.85 FEET TO THE SOUTHERLY MOST CORNER OF A PARCEL OF LAND AS CONVEYED TO LOUISVILLE TITLE AGENCY FOR NORTHWEST OHIO, INC., AS RECORDED IN LUCAS COUNTY OFFICIAL RECORD 20210614-0028987, FROM SAID POINT A 5/8 INCH IRON BAR CAN BE FOUND 0.07 FEET SOUTHEAST.

COURSE 15: THENCE SOUTH 59 DEGREES, 15 MINUTES, 09 SECONDS EAST, PASSING A 5/8 INCH IRON BAR FOUND AT A DISTANCE OF 0.07 FEET, AN OVERALL DISTANCE OF 50.15 FEET TO A POINT ON THE SOUTHEASTERLY RIGHT-OF-WAY OF BOERS - BOYER WAY.

COURSE 16: THENCE SOUTH 26 DEGREES, 19 MINUTES, 01 SECOND WEST, A DISTANCE OF 445.99 FEET TO A 1/2 INCH GALVANIZED STEEL PIPE FOUND.

COURSE 17: THENCE SOUTH 27 DEGREES, 05 MINUTES, 55 SECONDS WEST, A DISTANCE OF 693.25 FEET TO A 1/2 INCH GALVANIZED STEEL PIPE FOUND AT A POINT OF CURVATURE.

COURSE 18: THENCE TRaversing A NON-TANGENT ARC TO THE LEFT, HAVING A RADIUS OF 450.00 FEET, A TANGENT LENGTH OF 19.13 FEET, A CENTRAL ANGLE OF 04 DEGREES, 52 MINUTES, 09 SECONDS, A CHORD BEARING OF SOUTH 24 DEGREES, 39 MINUTES, 52 SECONDS WEST, A CHORD DISTANCE OF 38.23 FEET AND AN ARC LENGTH OF 38.24 FEET TO A 1/2 INCH GALVANIZED STEEL PIPE FOUND.

COURSE 19: THENCE SOUTH 22 DEGREES, 13 MINUTES, 49 SECONDS WEST, A DISTANCE OF 340.31 FEET TO A 1/2 INCH GALVANIZED STEEL PIPE FOUND AT A POINT OF CURVATURE.

COURSE 20: THENCE TRaversing A NON-TANGENT ARC TO THE LEFT, HAVING A RADIUS OF 450.00 FEET, A TANGENT LENGTH OF 24.24 FEET, A CENTRAL ANGLE OF 06 DEGREES, 10 MINUTES, 00 SECONDS, A CHORD BEARING OF SOUTH 19 DEGREES, 08 MINUTES, 48 SECONDS WEST, A CHORD DISTANCE OF 48.41 FEET AND AN ARC LENGTH OF 48.43 FEET TO A 1/2 INCH GALVANIZED STEEL PIPE FOUND.

COURSE 21: THENCE SOUTH 16 DEGREES, 03 MINUTES, 47 SECONDS WEST, A DISTANCE OF 448.32 FEET TO A MAGNETIC NAIL FOUND AT A POINT OF CURVATURE.

COURSE 22: THENCE TRaversing A TANGENT ARC TO THE LEFT, HAVING A RADIUS OF 1,150.00 FEET, A TANGENT LENGTH OF 168.22 FEET, A CENTRAL ANGLE OF 16 DEGREES, 38 MINUTES, 40 SECONDS, A CHORD BEARING OF SOUTH 07 DEGREES, 44 MINUTES, 27 SECONDS WEST, A CHORD DISTANCE OF 332.90 FEET AND AN ARC LENGTH OF 334.07 FEET TO A MAGNETIC NAIL FOUND.

COURSE 23: THENCE SOUTH 00 DEGREES, 34 MINUTES, 52 SECONDS EAST, A DISTANCE OF 60.64 FEET TO A MAGNETIC NAIL FOUND AT A POINT OF CURVATURE.

COURSE 24: THENCE TRaversing A TANGENT ARC TO THE LEFT, HAVING A RADIUS OF 450.00 FEET, A TANGENT LENGTH OF 20.43 FEET, A CENTRAL ANGLE OF 05 DEGREES, 11 MINUTES, 57 SECONDS, A CHORD BEARING OF SOUTH 03 DEGREES, 10 MINUTES, 50 SECONDS EAST, A CHORD DISTANCE OF 40.82 FEET AND AN ARC LENGTH OF 40.83 FEET TO A 1/2 INCH GALVANIZED STEEL PIPE FOUND.

COURSE 25: THENCE SOUTH 05 DEGREES, 49 MINUTES, 06 SECONDS EAST, A DISTANCE OF 464.55 FEET TO A 1/2 INCH GALVANIZED STEEL PIPE FOUND AT A POINT OF CURVATURE.

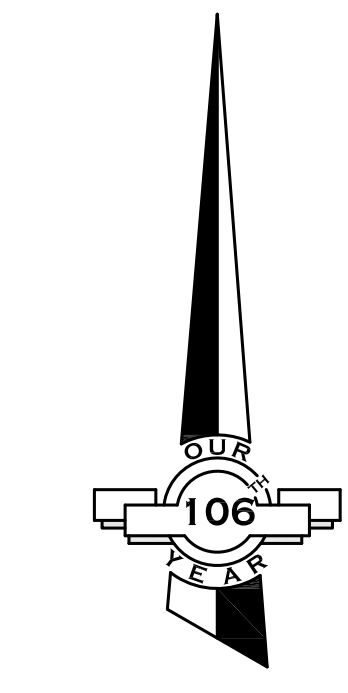
COURSE 26: THENCE TRaversing A NON-TANGENT ARC TO THE LEFT, HAVING A RADIUS OF 4,734.23 FEET, A TANGENT LENGTH OF 170.07 FEET, A CENTRAL ANGLE OF 04 DEGREES, 06 MINUTES, 53 SECONDS, A CHORD BEARING OF SOUTH 07 DEGREES, 10 MINUTES, 55 SECONDS EAST, A CHORD DISTANCE OF 339.92 FEET AND AN ARC LENGTH OF 339.99 FEET TO A 1/2 INCH GALVANIZED STEEL PIPE FOUND.

COURSE 27: THENCE SOUTH 09 DEGREES, 14 MINUTES, 22 SECONDS EAST, A DISTANCE OF 38.40 FEET TO A 1/2 INCH GALVANIZED STEEL PIPE FOUND AT A POINT OF CURVATURE.

COURSE 28: THENCE TRaversing A NON-TANGENT ARC TO THE LEFT, HAVING A RADIUS OF 2,864.93 FEET, A TANGENT LENGTH OF 352.11 FEET, A CENTRAL ANGLE OF 14 DEGREES, 00 MINUTES, 48 SECONDS, A CHORD BEARING OF SOUTH 16 DEGREES, 14 MINUTES, 31 SECONDS EAST, A CHORD DISTANCE OF 698.96 FEET AND AN ARC LENGTH OF 700.70 FEET TO A 1/2 INCH GALVANIZED STEEL PIPE FOUND ON THE NORTH LINE OF THE ROADWAY DEDICATION PLAT FOR A PORTION OF RELOCATED MIAMI STREET, PER ORDINANCE 883-01, AS RECORDED IN LUCAS COUNTY DEED 01-711A06.

COURSE 29: THENCE SOUTH 78 DEGREES, 49 MINUTES, 31 SECONDS WEST, ALONG THE NORTH LINE OF THE ROADWAY DEDICATION PLAT FOR A PORTION OF RELOCATED MIAMI STREET, A DISTANCE OF 68.00 FEET TO THE TRUE POINT OF BEGINNING.

CONTAINING 201,954.50 SQUARE FEET OR 4.6362 ACRES OF LAND. BEARINGS USED HEREIN ARE BASED UPON AN ASSUMED MERIDIAN AND ARE INTENDED TO INDICATE ANGULAR MEASUREMENT ONLY. ALL 1/2 INCH GALVANIZED STEEL PIPE SET ARE CAPPED WITH THE COMPANY NAME AND P.L.S. No. 7476. THIS LEGAL DESCRIPTION IS BASED UPON A FIELD SURVEY PREPARED BY LEWANDOWSKI ENGINEERS ON AUGUST 09, 2022.



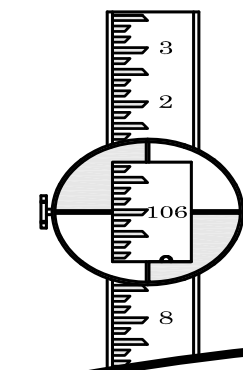
GRAPHIC SCALE
0 60 120
(IN FEET)
1 inch = 120 ft.

NOTE

1/2" GALVANIZED STEEL PIPE WITH D.W. CAP FOUND AT ALL POINTS MARKED THUS "O" UNLESS OTHERWISE NOTED.

AREA

201,954.50 SQ.FT.
OR
4.6362 AC.



LEWANDOWSKI ENGINEERS

CIVIL ENGINEERS & SURVEYORS
THE CHIEF BLDG 234 N. ERIE ST.
TOLEDO, OHIO, 43604
LEWANDOWSKIENG.COM
OFFICE: 419.255.4111

PARTIAL STREET VACATION OF: **BOERS - BOYER WAY** IN INTERNATIONAL PARK PART OF RIVER TRACT 87 CITY OF TOLEDO, LUCAS COUNTY, OHIO

DATE: 08/10/2022 SCALE: 1"=120'
DRAWN: NJG DWG #: 52041-VACATION
CHECKED: MDL DIR #: 52041
BOUNDARY: RPL DATE: MAY 08 88 GPS
TOPO: N/A CIVIL 3D 2014
UTILITIES: N/A GIS: ARCVIEW 9.2
GPS: NAD '83, GEOID-18US, OHIO N. 3401

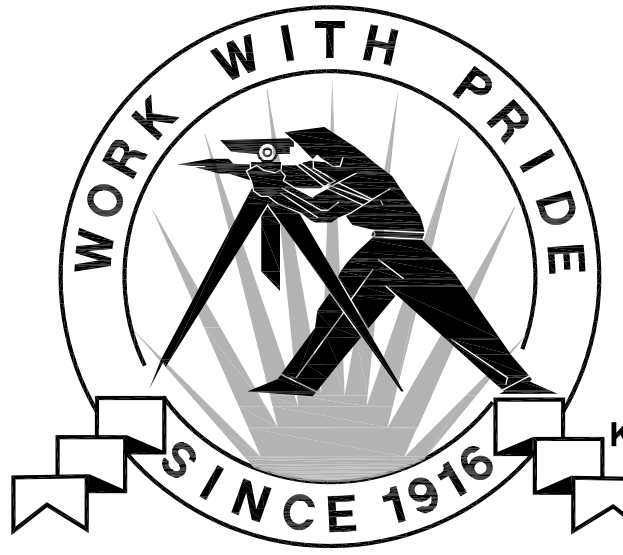
CERTIFICATION

WE HEREBY CERTIFY THAT WE HAVE MADE A SURVEY OF THE PREMISES SHOWN HEREON AS RECORDED IN LUCAS COUNTY OFFICIAL RECORD 20080214-0007589 & ORD.751-07 AND THAT THIS DRAWING IS A CORRECT PLOT THEREOF. ALL 1/2" GALVANIZED STEEL PIPE SET BY LEWANDOWSKI ENGINEERS ARE CAPPED WITH THE COMPANY NAME AND P.L.S. No. 7476.



COPY

REGISTERED SURVEYOR, STATE OF OHIO #7476



WARNING
UNDERGROUND CONDUITS IN AREA; CONTACT THE OHIO UTILITIES PROTECTION SERVICE (OUPS) TWO WORKING DAYS PRIOR TO ANY EXCAVATION, DEMOLITION OR CONSTRUCTION.....1-800-362-2764
CONTRACTOR SHALL IDENTIFY AND CONTACT ANY UTILITY COMPANIES THAT DO NOT PARTICIPATE IN THE OUPS SYSTEM.