



# **Tree Sidewalk Rehabilitation Program Pilot**


**Department of Public Service  
Toledo Department of Transportation**




# Why the Pilot?

- The pilot program will bring together engineers and arborist to collaborate on new methods of repair
- The pilot will focus on preserving mature trees and improving damaged sidewalks
- What we learn will inform the 2026 Sidewalk Program



# Where We're Going

- Streets from the proposed 2024 program
- Narrowed by tree-related damage
- Distributed across districts and zip codes
- Consideration for RE-TREE coordination 

Block(s)	Trees	Zip	District	
3100 Aldringham	1	43606	5	
1300 N. Ontario	5	43604	4	
2600 Latonia	5	43606	5	
600 White	1	43605	3	
600 Elm	1	43608	4	
800 Geneva	9	43609	3	
2800-2900 116 <sup>th</sup>	7	43611	6	
1700 Duncan	2	43613	1	
2200 Rosehill	3	43615	2	
<b>Total Tree Sites</b>	<b>37</b>			

# Patch

- **What it is:** Places a wedge like shape of asphalt to mitigate tripping hazard and unevenness.
- **When it's used:** To preserve a tree longer until it must be removed as it causes no disturbance to roots, or used to address a safety concern until more permanent repair scheduled.
- **Benefits:** Relatively quick, less expensive than replacement, and can be done with minimal disruption.



# Shave/Slice

- **What it is:** *Shaving* involves grinding a small amount of concrete from the raised portion of the sidewalk. *Slicing* uses a specialized saw with a diamond blade to remove a section of the sidewalk and create a smooth transition between slabs.
- **When it's used:** This technique is suitable for sidewalks with minor vertical displacements (e.g., a slight bump or unevenness).
- **Benefits:** Relatively quick, less expensive than replacement, and can be done with minimal disruption.



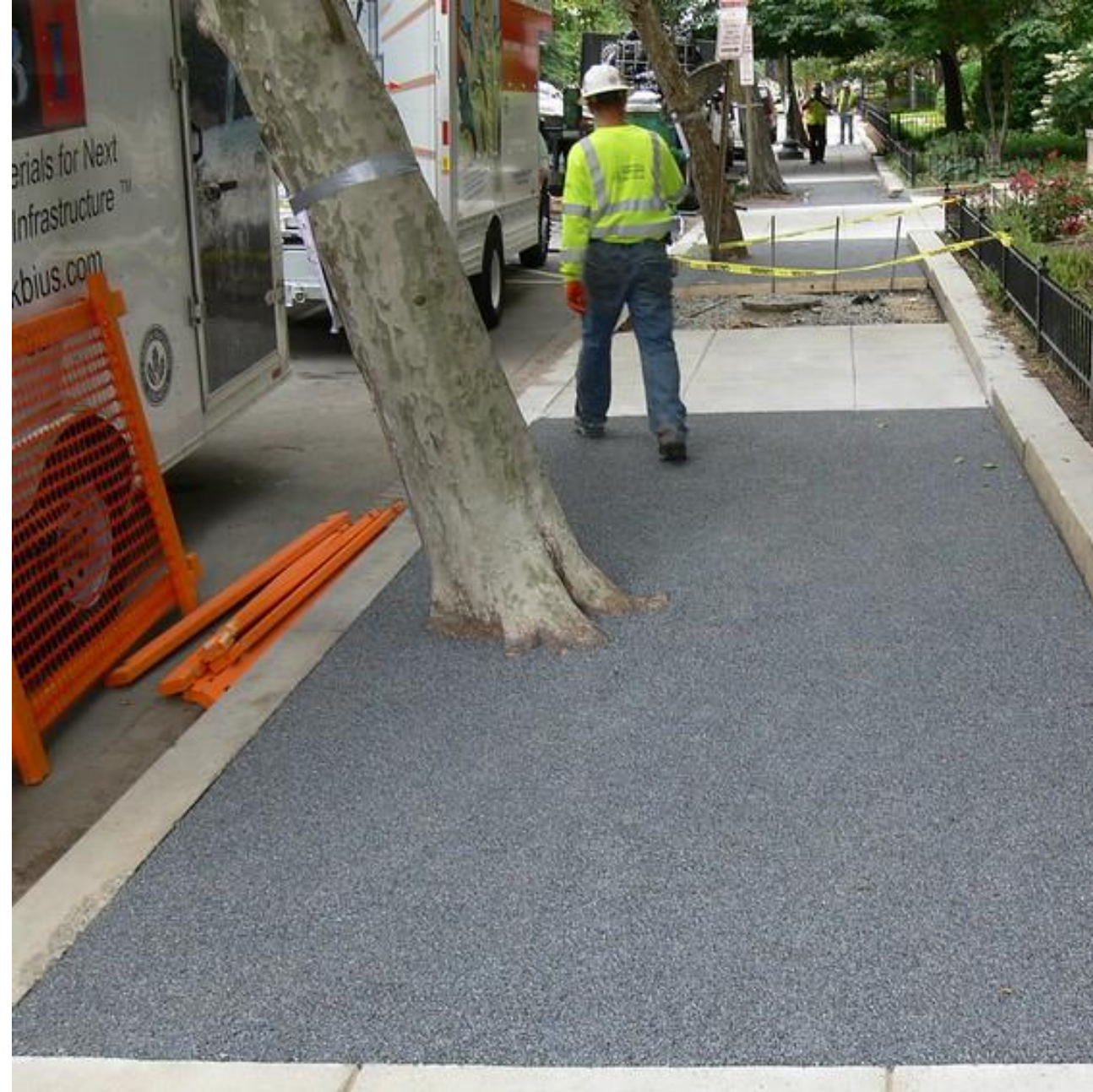
# Re-Route Walk

- **What it is:** *Re-routing* involves replacement of the damaged section with a new path that moves around the existing tree.
- **When it's used:** This technique is suitable for sidewalks with large, mature trees to allow additional space for growth.
- **Benefits:** Prevents future damage by moving the sidewalk out of the way, allows preservation of mature trees that couldn't be easily replaced without changing the neighborhood character.



# Flexipave

- **What it is:** *Flexipave* is a porous, flexible material that can bond well with existing surfaces. It can be used for both repairs and replacements.
- **When it's used:** This material can give greater longevity to more intensive repairs when rerouting is not an option.
- **Benefits:** Helps with stormwater management, allows tree roots to breath, and is long lasting (about 15 years).



# Program Funding

Pilot Program is funded from Capital Improvement Fund

## 2026 Program Funding:

- For tree related sidewalk damage, repairs will be funded through the general forestry assessment for all residents.
- For sidewalk repairs unrelated to tree damage the resident is responsible for the cost
  - Cost can be paid directly
  - Cost can be assessed over 10 years

# Measuring Success

- Cost per sq. ft.
- Ease of implementation
- Effectiveness for saving trees
- Resident feedback survey
- Annual condition checks





**Thank you.**

➡ [toledo.oh.gov](https://toledo.oh.gov)