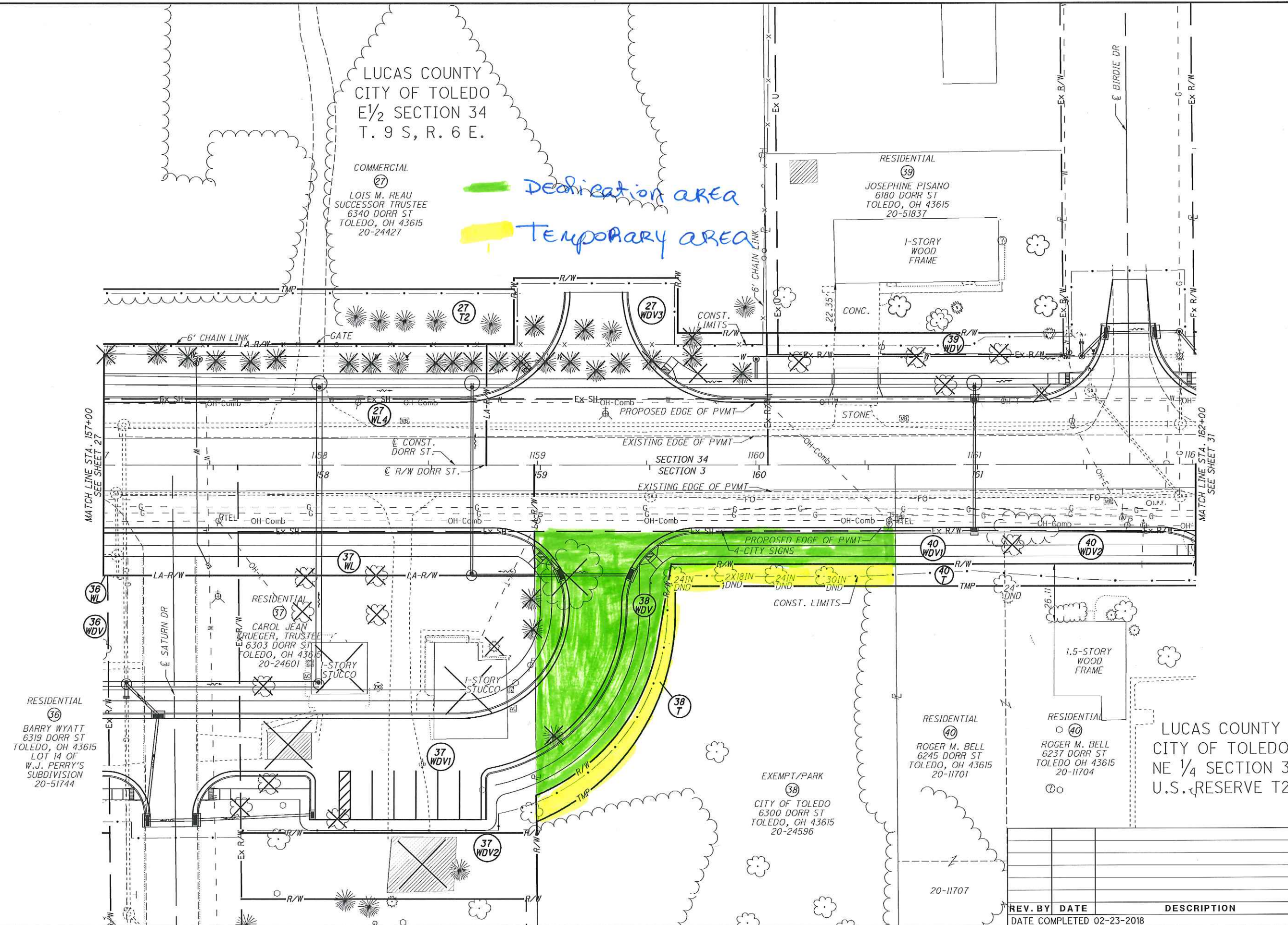


F:\Survey\TT-LUC-475-7.53\LUC-475-7.53\Design\RW\Sheets\99737_RT007.dgn Sheet 2/26/2018 11:33:24 AM mp/hh



LUCAS COUNTY
CITY OF TOLEDO
E 1/2 SECTION 34
T. 9 S., R. 6 E.

COMMERCIAL
27
LOIS M. REAU
SUCCESSOR TRUSTEE
6340 DORR ST
TOLEDO, OH 43615
20-24427

RESIDENTIAL
39
JOSEPHINE PISANO
6180 DORR ST
TOLEDO, OH 43615
20-51837

RESIDENTIAL
37
CAROL JEAN RUEGER, TRUSTEE
6303 DORR ST
TOLEDO, OH 43615
20-24601

RESIDENTIAL
36
BARRY WYATT
6319 DORR ST
TOLEDO, OH 43615
LOT 14 OF
W.J. PERRY'S
SUBDIVISION
20-51744

RESIDENTIAL
40
ROGER M. BELL
6245 DORR ST
TOLEDO, OH 43615
20-11701

RESIDENTIAL
40
ROGER M. BELL
6237 DORR ST
TOLEDO, OH 43615
20-11704

EXEMPT/PARK
38
CITY OF TOLEDO
6300 DORR ST
TOLEDO, OH 43615
20-24596

LUCAS COUNTY
CITY OF TOLEDO
NE 1/4 SECTION 3
U.S. RESERVE T2

RIGHT OF WAY TOPO SHEET
STA. 157+00.00 TO STA. 162+00.00

LUC-475-7.53

PID NO. 99737

R/W DESIGNER MJP
R/W REVIEWER JRM

REV. BY	DATE	DESCRIPTION

DATE COMPLETED 02-23-2018

29/58