



**TOL**  
City of Toledo

**METROPARKS  
TOLEDO  
UPDATES**

# AGENDA

1. Welcome and Introductions
2. Glass City Metropark and Glass City Riverwalk Project Updates
3. Upcoming Legislation
4. Questions







**METROPARKS  
TOLEDO**

---

# **GLASS CITY METROPARK / GLASS CITY RIVERWALK UPDATE**





# GLASS CITY METROPARK

---





# GLASS CITY METROPARK: One Park, Two Phases

## Phase 1

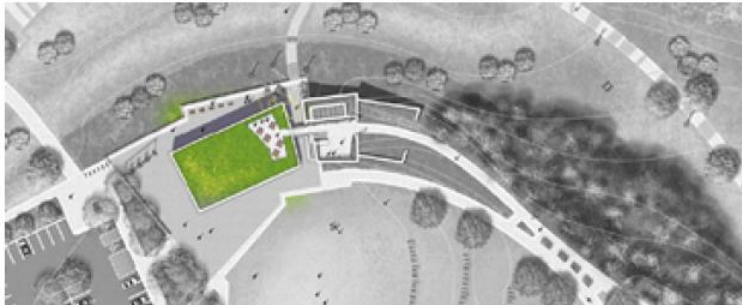






# PHASE 1: The Glass City Pavilion

- Anchoring the event lawn, the pavilion is designed with the flexibility to host indoor and outdoor events, year-round.
- Restrooms and concessions
- Accessible green roof terrace with 360° views of the park, river, and city.





# PHASE 1: Event Lawn

- Event lawn can accommodate up to 5,000 people
- Concerts, community gatherings, festivals, passive recreation, picnicking, and more







## PHASE 1: Sled Hill

- 25' tall sled hill
- Smaller 'kiddie' hill
- Fire pit warming area
- Lighting for nighttime enjoyment





# GLASS CITY METROPARK: One Park, Two Phases

## Phase 2







**METROPARKS  
TOLEDO**

---

# MARKET HALL + PLAZA



# Market Hall

---







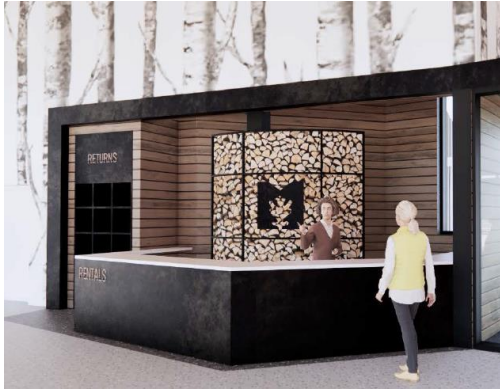
# Market Hall

---





# Market Hall

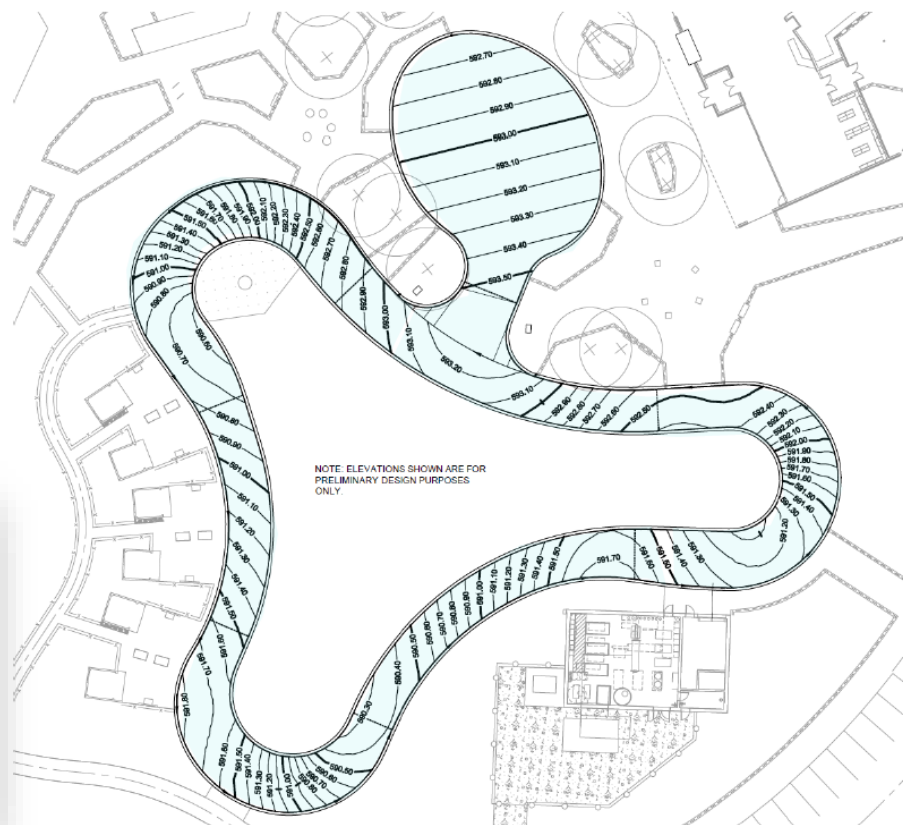






# Ice Ribbon and Skating Pond

- 18,000 SF of skating surface
- Ice ribbon and skating pond
- Skate rental and warming room in adjacent Market Hall
- Fire pits / warming stations in plaza
- Lighting and music for night-time enjoyment





# Cabanas







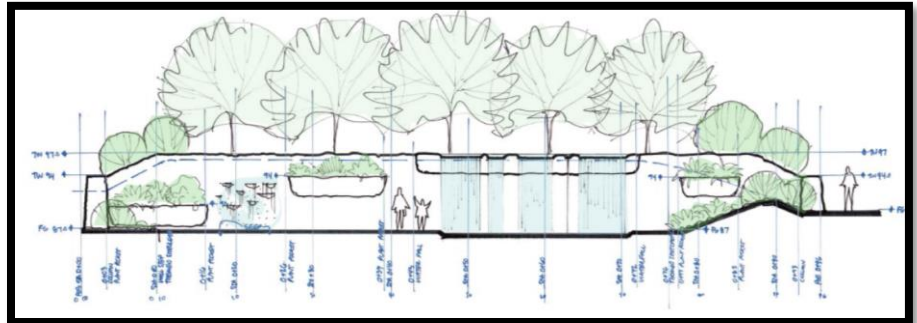
**METROPARKS  
TOLEDO**

---

# DISCOVERY PLAY



# DISCOVERY PLAY – WATER: The Mini-Maumee





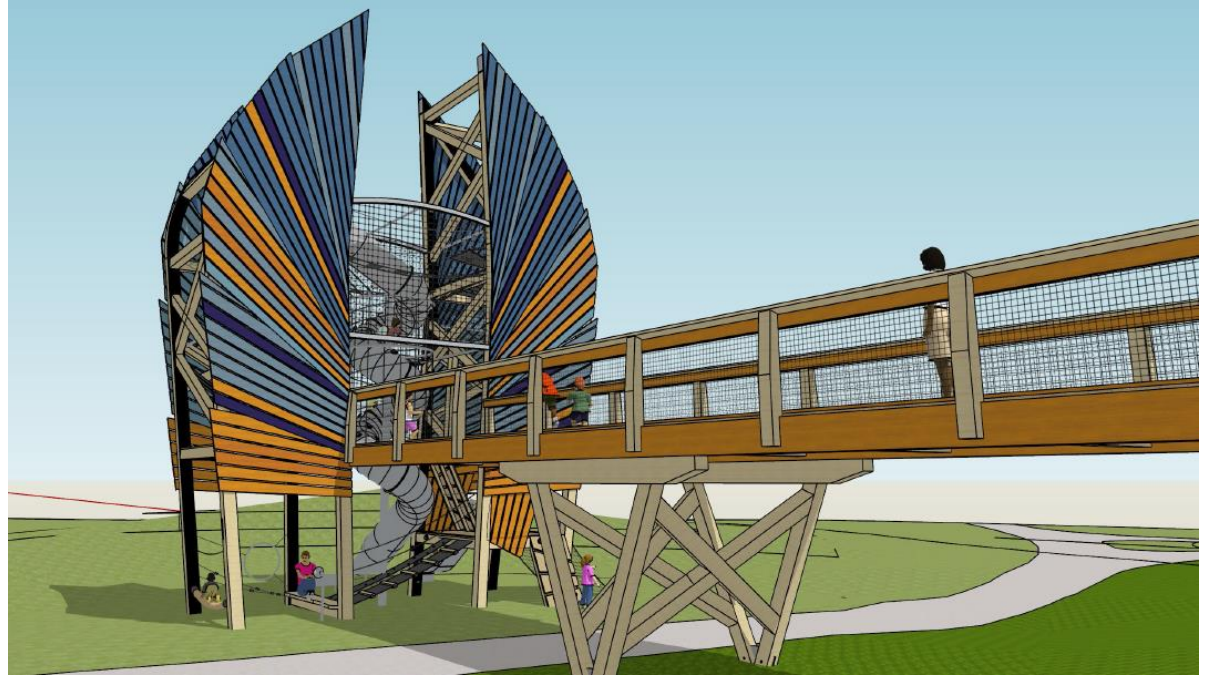


# DISCOVERY PLAY – ADVENTURE: Prairie + Pollinator Play Node





# DISCOVERY PLAY – ADVENTURE: The Woodland Play Node







**METROPARKS  
TOLEDO**

---

# CONNECTIVITY

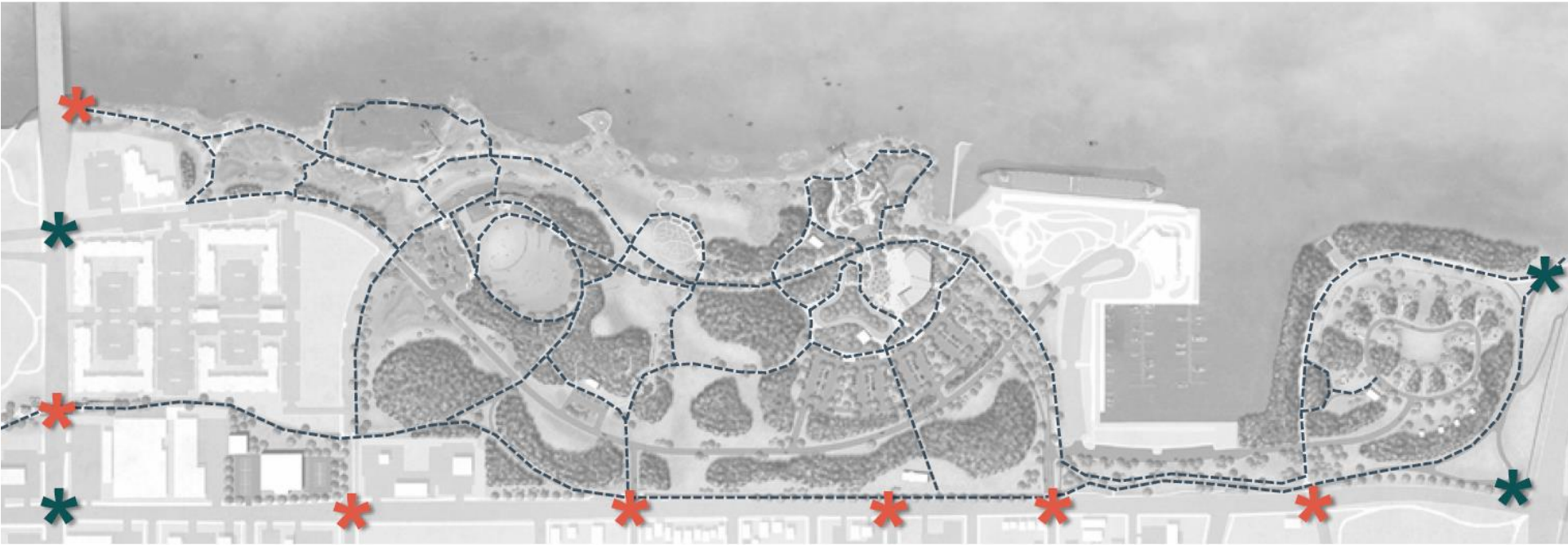


# CIRCULATION + CONNECTIVITY: Garfield Greenway





# CIRCULATION + CONNECTIVITY: Pedestrian Routes



----- MAIN PEDESTRIAN PATHS



EXISTING NEIGHBORHOOD CONNECTIONS



PROPOSED NEIGHBORHOOD CONNECTIONS



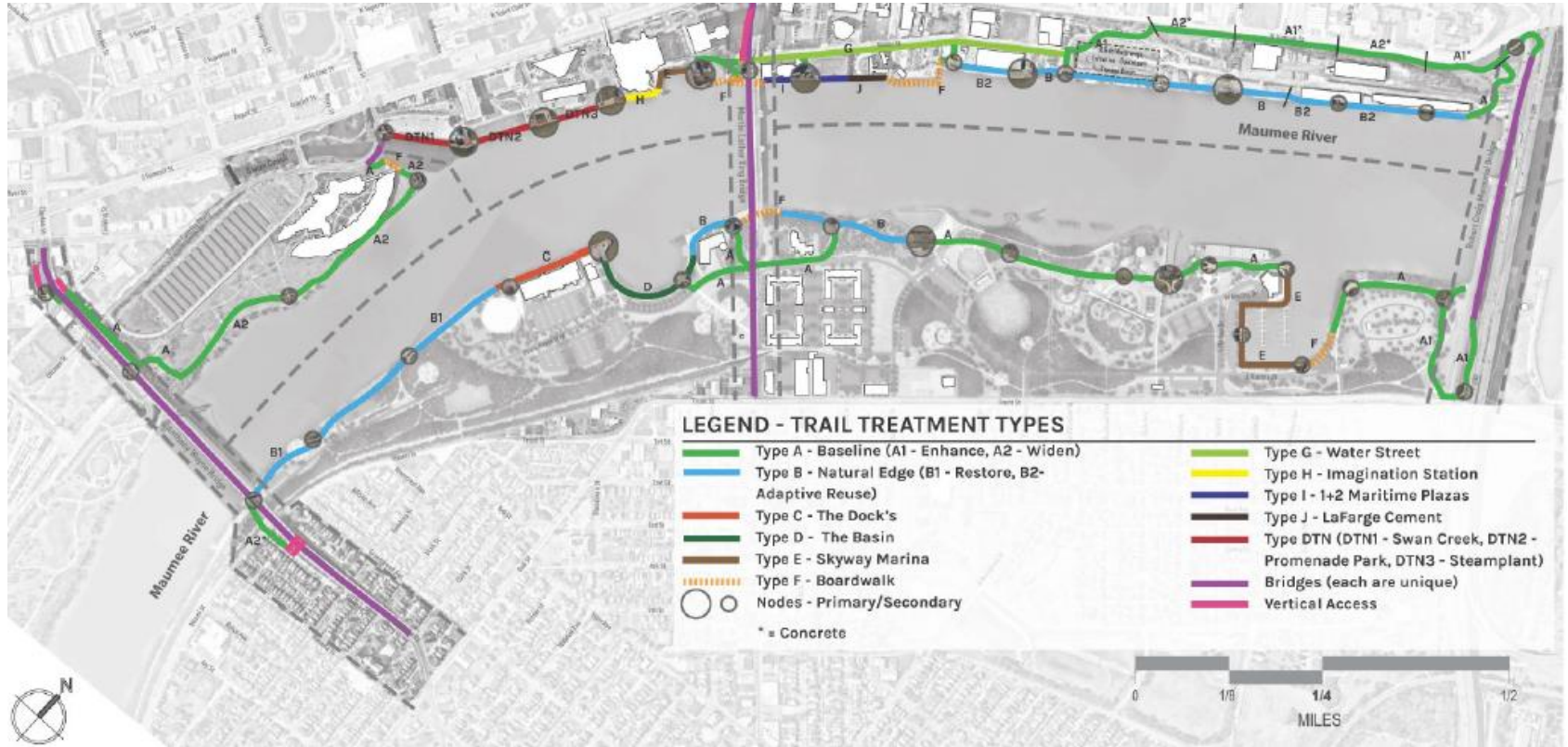


# CIRCULATION + CONNECTIVITY: Front Street Traffic Calming





# CIRCULATION + CONNECTIVITY: Glass City Riverwalk





**METROPARKS  
TOLEDO**

---

**WHAT'S NEXT?**













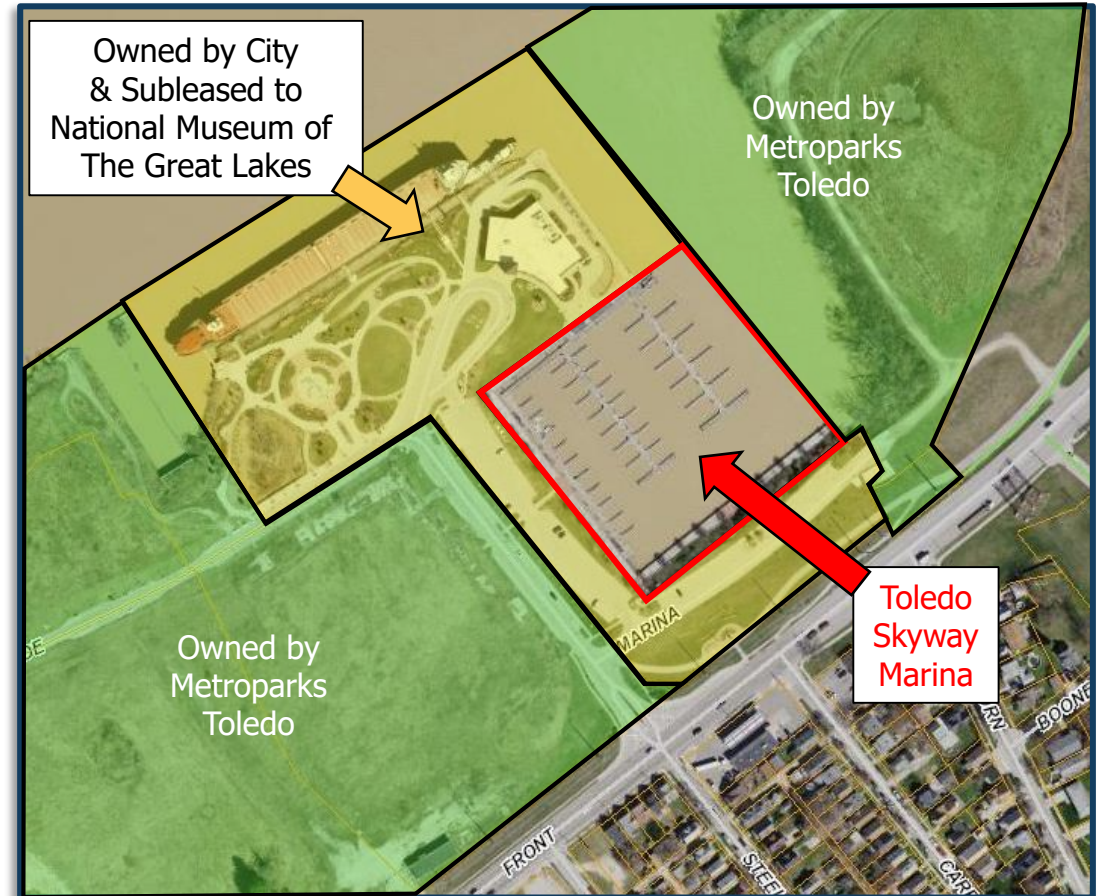
**UPCOMING  
LEGISLATION**



# UPCOMING LEGISLATION

## Toledo Skyway Marina

- Opened in June 2008
- 77 Dock Slips
- Currently Managed by Toledo Skyway Marina, LLC
- Dockmaster Agreement Expires in May 2022



# UPCOMING LEGISLATION

## Toledo Skyway Marina

### *Proposal*

- 2 Year Dockmaster Agreement
- 2 Year Option to Purchase for \$1.00





# Questions?

➔ [toledo.oh.gov](https://toledo.oh.gov)