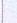






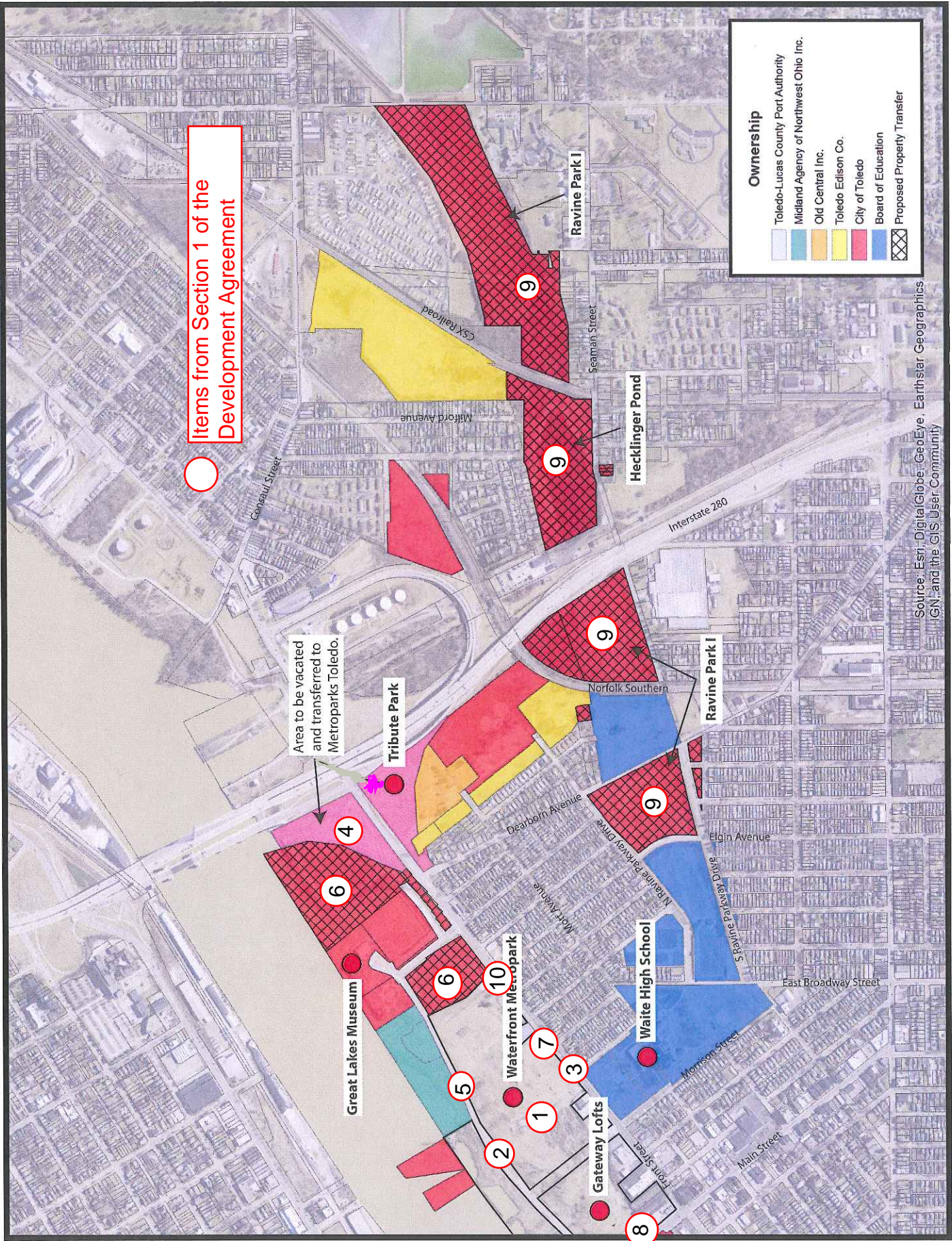


**Items from Section 1 of the Development Agreement**

**Ownership**

-  Toledo-Lucas County Port Authority
-  Midland Agency of Northwest Ohio Inc.
-  Old Central Inc.
-  Toledo Edison Co.
-  City of Toledo
-  Board of Education
-  Proposed Property Transfer



Source: Esri, DigitalGlobe, GeoEye, Earthstar Geographics, IGN, and the GIS User Community