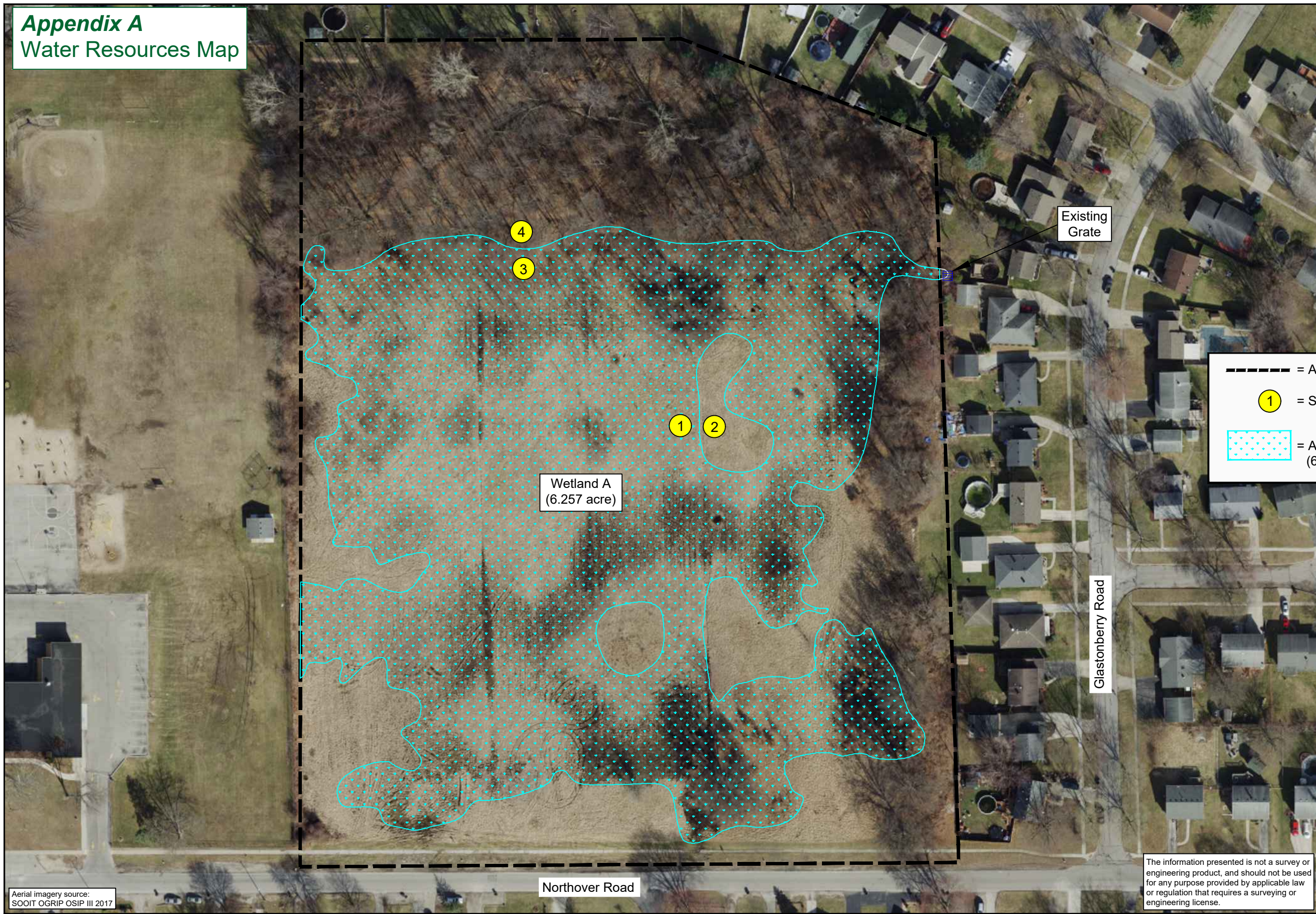





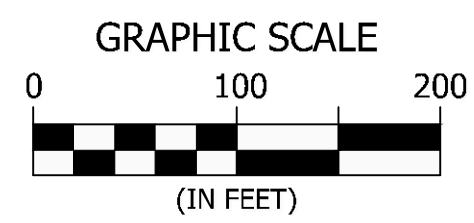
Appendix A
Water Resources Map



NOTE: Wetlands sizes and stream lengths could change upon overlay of a boundary survey, especially where these features extend outside of or are in close proximity to the shown study limits. Wetlands acreage and stream lengths are calculated for the portion that occurs in the shown study limits.



-  = Approximate study area
-  = Sample point location
-  = Areas of wetlands delineated within study area (6.257 acre)



The information presented is not a survey or engineering product, and should not be used for any purpose provided by applicable law or regulation that requires a surveying or engineering license.

Aerial imagery source:
SOOIT OGRIP OSIP III 2017

Prepared by:
DAVEY 
Resource Group

Prepared for:
Washington Local School District

12 Acres, Northover Road
Toledo
Lucas County, Ohio

Data used to produce this map were collected on June 3, 2020

Map Sheet **1** of 1