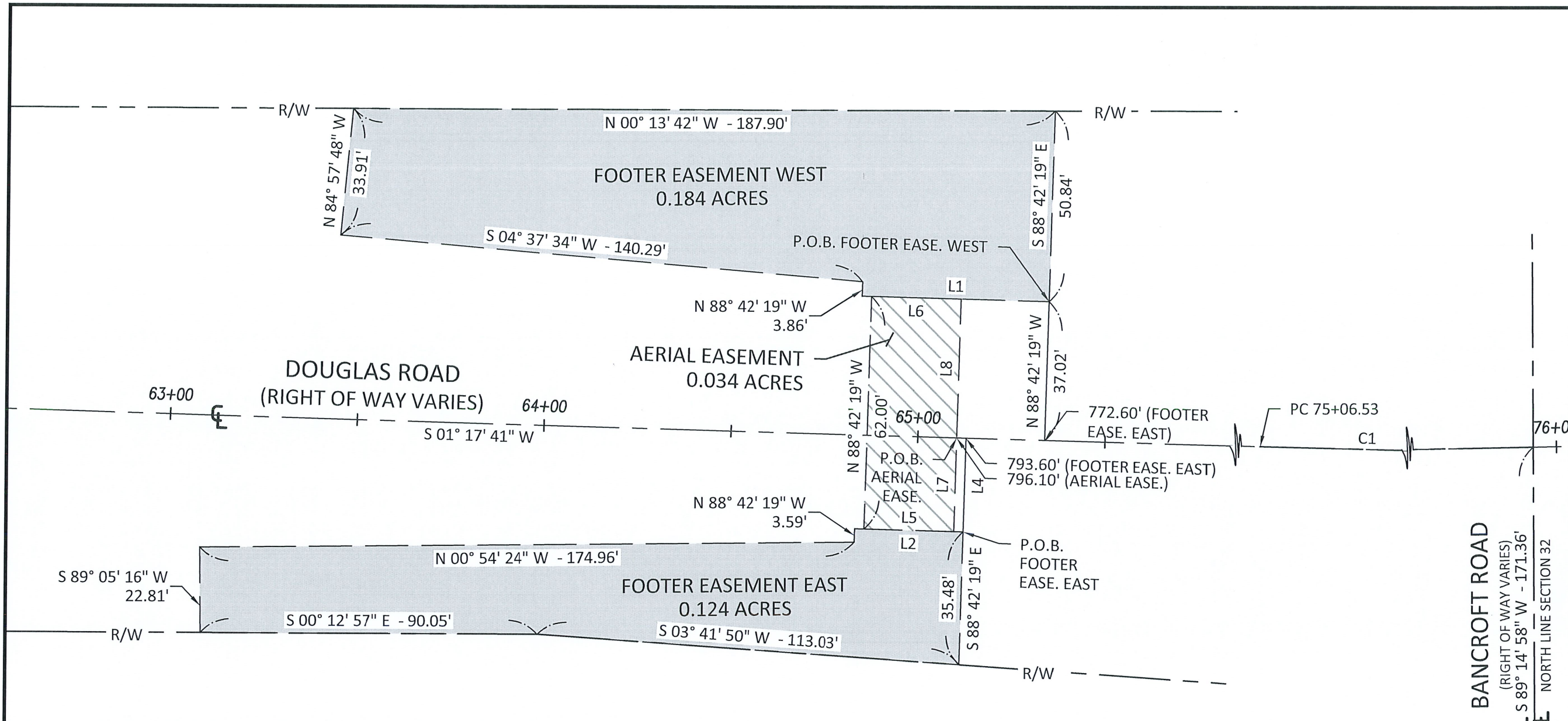


PLOTTED: Jan 26, 2024 - 10:58am
 DRAWING: M:\22205 (UT - Pedestrian Bridge Over Douglas Rd)\SURVEY\DWG\22205 EASEMENTS.dwg: 11x17 (EASE)



Line Table			Line Table		
Line #	Direction	Length	Line #	Direction	Length
L1	S 01° 17' 41" W	50.00'	L6	N 01° 17' 41" E	24.00'
L2	N 01° 17' 41" E	29.00'	L7	S 88° 42' 19" E	24.98'
L4	S 88° 42' 19" E	24.98'	L8	S 88° 42' 19" E	37.02'
L5	N 01° 17' 41" E	24.00'			

Curve Table					
Curve #	Radius	Delta	Chord Bearing	Chord Length	Length
C1	5729.58'	2°52'21"	S 00° 08' 30" E	287.22'	287.25'

BASIS OF BEARINGS:
 THE BEARINGS SHOWN HEREON ARE BASED ON AN ASSUMED BEARING AND ARE FOR THE SOLE PURPOSE OF SHOWING ANGULAR MEASUREMENT.

HORIZONTAL DATUM
 OHIO STATE PLANE (NORTH ZONE 3401) NAD83

CERTIFICATION:
 I HEREBY CERTIFY THAT THIS SURVEY SHOWN ON THE ATTACHED PLAT WAS PREPARED FROM AN ON THE GROUND SURVEY MADE UNDER MY SUPERVISION AND THAT IT AND THE INFORMATION, COURSES AND DISTANCES AS SHOWN ARE CORRECT TO THE BEST OF MY KNOWLEDGE.

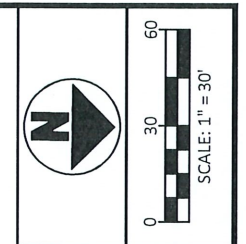
[Signature]
 R.J. LUMBREZER, P.S.
 OHIO PROFESSIONAL SURVEYOR NO. 8029

1/26/24
 DATE



W. WESTWOOD AVE
 (60' RIGHT OF WAY)

P.O.C. ALL EASEMENTS
 NORTHEAST CORNER,
 SECTION 32, T9S-R7E
 1" IPIN IN MON. BOX



NO	REVISION	DATE
9		
8		
7		
6		
5		
4		
3		
2		
1		

DGL CONSULTING ENGINEERS, LLC
 3455 BRIARFIELD BLVD., SUITE E
 MAUMEE, OH 43537
 PHONE: 419.535.1015
 www.dgl-hd.com

UNIVERSITY OF TOLEDO
 PART OF SECTION 32,
 TOWN 9 SOUTH, RANGE 7 EAST,
 CITY OF TOLEDO,
 LUCAS COUNTY, OHIO
EASEMENT SURVEY

FILE: EASEMENTS.DWG
 JOB NO.: 22205
 DRAWN BY: BRE
 ISSUED: 01/16/2024