

Exhibit A: City Center Tax Increment Financing (TIF) Parcels

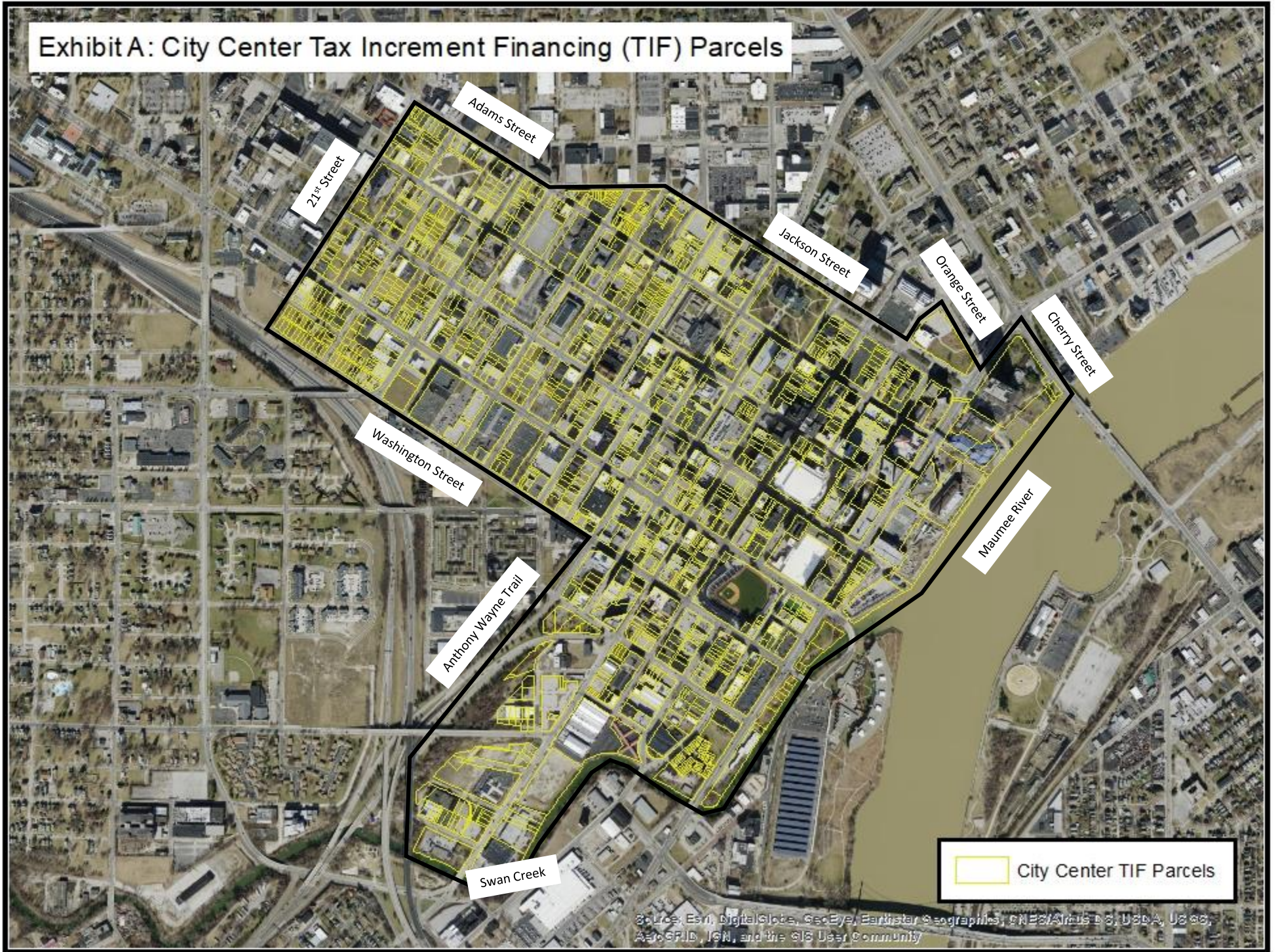


EXHIBIT A							
#	AssrA1253No	CLASS	ParcelNo	OWNERNAME	Address	LUC	Remarks
1	01343008	C	0305541	I.B.C. INC AN OHIO CORPORATION	411 14TH ST	456	
2	01343007	C	0305544	I.B.C. INC AN OHIO CORPORATION	413 14TH ST	400	
3	01343006	C	0305547	PASCHALIS EMMANUEL & JUDY	415 14TH ST	400	
4	01343005	C	0305551	PASCHALIS EMMANUEL & JUDY	417 14TH ST	400	
5	01343004	C	0305554	PASCHALIS EMMANUEL & JUDY	419 14TH ST	400	
6	01343003	C	0305557	PASCHALIS EMMANUEL & JUDY	423 14TH ST	400	
7	01343002	C	0305561	PASCHALIS EMMANUEL & JUDY	425 14TH ST	400	
8	01343001	C	0305564	PASCHALIS EMMANUEL & JUDY	427 14TH ST	400	
9	01342030	C	0305571	PASCHALIS EMMANUEL & JUDY	430 14TH ST	400	
10	01342026	C	0305614	BLACKACRE BLDG CO.,LTD	412 14TH ST	447	
11	01342031	C	0305616	PASCHALIS EMMANUEL & JUDY	420 14TH ST	400	
12	01342025	C	0305617	RG DEZIGNS LLC	1316 ADAMS ST	420	
13	01342032	C	0305619	VISTULA MANAGMENT COMPANY	1320 ADAMS ST	420	
14	01342022	C	0305627	SHEETS MICHAEL	1314 ADAMS ST	420	
15	01342021	C	0305631	PASCHALIS EMMANUEL & JUDY	1312 ADAMS ST	400	
16	01342020	C	0305634	PASCHALIS EMMANUEL & JUDY	1310 ADAMS ST	400	
17	01342019	C	0305637	PASCHALIS EMMANUEL & JUDY	1308 ADAMS ST	400	
18	01342018	C	0305641	PASCHALIS EMMANUEL & JUDY	1306 ADAMS ST	400	
19	01342017	C	0305644	PASCHALIS EMMANUEL & JUDY	1304 ADAMS ST	400	
20	01342016	C	0305647	PASCHALIS EMMANUEL & JUDY	1302 ADAMS ST	400	
21	01342015	E	0305651	UPTOWN ASSOCIATION INC	413 13TH ST	680	
22	01342014	E	0305654	UPTOWN ASSOCIATION INC	413 13TH ST	680	
23	01342012	C	0305671	MIDLAND AGENCY OF NORTHWEST OHIO INC	415 13TH ST	447	
24	01342011	C	0305674	MIDLAND AGENCY OF NORTHWEST OHIO INC	425 13TH ST	447	
25	01342010	C	0305677	MIDLAND AGENCY OF NORTHWEST OHIO INC	425 13TH ST	447	
26	01342009	C	0305681	MIDLAND AGENCY OF NORTHWEST OHIO INC	425 13TH ST	447	
27	01342008	C	0305684	MIDLAND AGENCY OF NORTHWEST OHIO INC	431 13TH ST	400	
28	01342007	C	0305687	MIDLAND AGENCY OF NORTHWEST OHIO INC TR	433 13TH ST	400	
29	01333018	C	0305734	MADHOUSE PROPERTIES LTD AN OHIO LIMITED	436 13TH ST	480	
30	01333024	C	0305754	MADHOUSE PROPERTIES LTD AN OHIO LIMITED	448 13TH ST	447	
31	01333024	E	0305755	MADHOUSE PROPERTIES LTD AN OH LLC	448 13TH ST	710	
32	01333005	C	0305794	MADHOUSE PROPERTIES LTD AN OHIO LIMITED	435 12TH ST	400	
33	01333001	C	0305811	ABC MOVERS INC AN OH CORP	449 12TH ST	456	
34	01321025	C	0305817	SMITH VICKI C TRUSTEE	7 12TH ST	456	
35	01343021	C	0306117	PASCHALIS EMMANUEL & JUDY	1417 JACKSON ST	400	
36	01552001	E	0355001	LUCAS COUNTY	401 JEFFERSON AVE	620	
37	01552001	C	0355002	LUCAS COUNTY BOARD OF COMMISSIONERS	401 JEFFERSON AVE	456	County Parcel
38	01552002	E	0355004	COUNTY OF LUCAS, OHIO	401 JEFFERSON AVE	620	County Parcel
39	01552003	C	0355007	PLT HOLDINGS, LLC, TRUSTEE	101 N SUMMIT ST	411	County Parcel
40	01552004	E	0355011	LUCAS COUNTY	101 N SUMMIT ST	620	County Parcel
41	01320017	E	0412431	GOODWILL INDUSTRIES OF NORTHWEST OHIO INC	1120 MADISON AVE	680	
42	01320016	E	0412437	GOODWILL INDUSTRIES OF NORTHWEST OHIO INC	1114 MADISON AVE	680	
43	01320015	E	0412441	GOODWILL INDUSTRIES OF NORTHWEST OHIO INC	1108 MADISON AVE	680	
44	01320014	E	0412444	GOODWILL INDUSTRIES OF NORTHWEST OHIO INC	1102 MADISON AVE	680	
45	01314001	C	0412451	MADISON PARTNERS LLC, AN OHIO LIMITED LI	1009 MADISON AVE	449	

EXHIBIT A							
#	AssrA1253No	CLASS	ParcelNo	OWNERNAME	Address	LUC	Remarks
46	01314002	C	0412461	MADISON PARTNERS LLC, AN OHIO LIMITED LI	235 10TH ST	447	
47	01314015	C	0412464	MADISON PARTNERS LLC, AN OHIO LIMITED LI	230 11TH ST	447	
48	01319009	E	0412481	BOARD OF COUNTY COMMISSIONERS	1111 MADISON AVE	620	
49	01319001	E	0412501	BOARD OF LUCAS COUNTY COMMISSIONERS	225 11TH ST	620	
50	01314021	C	0412581	YOUNG WOMANS CHRISTIAN ASSOCIATION	1018 JEFFERSON AVE	499	
51	01314021	E	0412584	YWCA OF GREATER TOLEDO HOUSING, LLC AN O	1018 JEFFERSON AVE	680	
52	01314022	C	0412585	YWCA OF GREATER TOLEDO HOUSING, LLC AN O	1002 JEFFERSON AVE	403	
53	01314022	E	0412586	YWCA OF GREATER TOLEDO HOUSING, LLC AN O	1002 JEFFERSON AVE	710	
54	01314021	E	0412587	YWCA OF GREATER TOLEDO HOUSING, LLC AN O	1018 JEFFERSON AVE	710	
55	01314005	C	0412591	MADISON PARTNERS LLC, AN OHIO LIMITED LI	227 10TH ST	447	
56	01314013	C	0412594	MADISON PARTNERS LLC, AN OHIO LIMITED LI	226 11TH ST	447	
57	01314014	C	0412597	MADISON PARTNERS LLC, AN OHIO LIMITED LI	228 11TH ST	447	
58	01314004	C	0412604	MADISON PARTNERS LLC, AN OHIO LIMITED LI	229 10TH ST	447	
59	01314003	C	0412607	MADISON PARTNERS LLC, AN OHIO LIMITED LI	231 10TH ST	447	
60	01397018	C	0744587	TOLEDO SIGN, INC. *	2035 ADAMS ST	480	
61	01397019	C	0744591	TOLEDO SIGN, INC	2033 ADAMS ST	480	
62	01397020	C	0744594	TOLEDO SIGN, INC	2031 ADAMS ST	480	
63	01397017	C	0744597	TOLEDO SIGN, INC	332 21ST ST	480	
64	01397021	C	0744601	TOLEDO SIGN, INC	2027 ADAMS ST	480	
65	01397022	C	0744607	TOLEDO SIGN, INC	2021 ADAMS ST	480	
66	01397023	C	0744611	TOLEDO SIGN, INC	2017 ADAMS ST	480	
67	01397024	C	0744614	TOLEDO SIGN, INC	2011 ADAMS ST	480	
68	01397025	C	0744617	TOLEDO SIGN, INC	2007 ADAMS ST	480	
69	01397001	C	0744621	TOLEDO SIGN, INC.	333 20TH ST	480	
70	01398017	E	0744627	A RENEWED MIND AN OHIO NONPROFIT CORPORA	1829 ADAMS ST	680	
71	01398018	E	0744634	A RENEWED MIND AN OHIO NONPROFIT CORPORA	1821 ADAMS ST	680	
72	01398019	C	0744641	BAIRD PROPERTIES LTD AN OHIO LIMITED LIA	1815 ADAMS ST	430	
73	01398019	E	0744642	BAIRD PROPERTIES LTD AN OHIO LIMITED LIA	1815 ADAMS ST	710	
74	01398019	E	0744643	BAIRD PROPERTIES LTD AN OHIO LIMITED LIA	1815 ADAMS ST	710	
75	01398020	C	0744644	KOVACS KATHLEEN M	1811 ADAMS ST	429	
76	01398001	C	0744647	GREWAL BALSHARAN	1809 ADAMS ST	429	
77	01367014	C	0744657	PASCHALIS EMMANUEL & JUDYK	1713 ADAMS ST	429	
78	01367001	C	0744667	PASCHALIS EMMANUEL & JUDY	1701 ADAMS ST	430	
79	01361014	C	0744674	CONCOR INVESTMENTS LTD ANOHIO LIMITED LI	332 17TH ST	447	
80	01361013	C	0744677	CONCOR INVESTMENTS LTD ANOHIO LIMITED LI	330 17TH ST	447	
81	01361012	C	0744681	CONCOR INVESTMENTS LTD ANOHIO LIMITED LI	328 17TH ST	447	
82	01361011	C	0744684	CONCOR INVESTMENTS LTD ANOHIO LIMITED LI	322 17TH ST	447	
83	01361010	C	0744691	CONCOR INVESTMENTS LTD ANOHIO LIMITED LI	314 17TH ST	447	

EXHIBIT A							
#	AssrA1253No	CLASS	ParcelNo	OWNERNAME	Address	LUC	Remarks
84	01361009	C	0744694	CONCOR INVESTMENTS LTD ANOHIO LIMITED LI	314 17TH ST	447	
85	01361008	C	0744697	CONCOR INVESTMENTS LTD ANOHIO LIMITED LI	1614 MADISON AVE	447	
86	01361007	C	0744707	CONCOR INVESTMENTS LTD ANOHIO LIMITED LI	1612 MADISON AVE	447	
87	01361006	C	0744711	CONCOR INVESTMENTS LTD ANOHIO LIMITED LI	1600 MADISON AVE	449	
88	01367005	C	0744721	PASCHALIS EMMANUEL & JUDY	317 17TH ST	456	
89	01367004	C	0744724	PASCHALIS EMMANUEL & JUDY	329 17TH ST	456	
90	01367003	C	0744727	PASCHALIS EMMANUEL & JUDY	331 17TH ST	456	
91	01367002	C	0744731	PASCHALIS EMMANUEL & JUDY	335 17TH ST	456	
92	01367013	C	0744734	PASCHALIS EMMANUEL & JUDY	330 18TH ST	430	
93	01367012	C	0744737	PASCHALIS EMMANUEL & JUDY	324 18TH ST	460	
94	01367011	C	0744741	PASCHALIS EMMANUEL & JUDY	322 18TH ST	456	
95	01367010	C	0744744	PASCHALIS EMMANUEL & JUDY	316 18TH ST	430	
96	01397005	I	0744774	BELLMAN ALAN N TRUSTEE	317 20TH ST	340	
97	01397004	C	0744777	HOUSE JAMES TRUSTEE	321 20TH ST	400	
98	01397003	I	0744781	323 20TH STREET LLC AN OHIO LIMITED LIABILITY	323 20TH ST	340	
99	01397002	I	0744784	RAMSEY SCOTT & CHRIS	329 20TH ST	340	
100	01397016	C	0744787	HOUSE ANDREA TRUSTEE OF THE ANDREA J	330 21ST ST	480	
101	01397014	C	0744794	HOUSE ANDREA TRUSTEE OF THE ANDREA J	322 21ST ST	480	
102	01397013	I	0744797	BELLMAN ALAN N TRUSTEE	316 21ST ST	340	
103	01397012	E	0744854	OHIOLINK CORRECTIONS AND TREATMENT, INC	2012 MADISON AVE	680	
104	01397011	E	0744861	OHIOLINK CORRECTIONS AND TREATMENT, INC	2012 MADISON AVE	680	
105	01397010	E	0744864	OHIOLINK CORRECTIONS AND TREATMENT, INC	2012 MADISON AVE	680	
106	01397009	E	0744867	OHIOLINK CORRECTIONS & TREATMENT INC AN	2010 MADISON AVE	680	
107	01397007	E	0744874	OHIOLINK CORRECTIONS AND TREATMENT, INC	1924 MADISON AVE	680	
108	01397006	E	0744877	OHIOLINK CORRECTIONS AND TREATMENT INC,	1918 MADISON AVE	680	
109	01398007	E	0744904	CITY OF TOLEDO	1810 MADISON AVE	640	
110	01398006	C	0744907	PROMEDICA HEALTH SYSTEMS INC AN OHIO NON	1806 MADISON AVE	449	
111	01367009	C	0744914	WILSON PROPERTY HOLDINGS LLC	1724 MADISON AVE	447	
112	01367007	C	0744924	PASCHALIS EMMANUEL & JUDYK	1708 MADISON AVE	400	
113	01367006	C	0744927	PASCHALIS EMMANUEL & JUDYK	1702 MADISON AVE	400	
114	01399001	C	0744934	MIDLAND AGENCY OF NORTHWEST OHIO INC TRUSTEE	1803 MADISON AVE	400	
115	01399019	C	0744941	MIDLAND AGENCY OF NORTHWEST OHIO INC TRUSTEE	1807 MADISON AVE	400	
116	01399018	C	0744944	MIDLAND AGENCY OF NORTHWEST OHIO INC TRUSTEE	1811 MADISON AVE	400	
117	01399017	C	0744947	LUCAS CO DEMOCRATIC PARTY	1817 MADISON AVE	447	
118	01400001	C	0744951	LOUISVILLE TITLE AGENCY OF NW OHIO	1903 MADISON AVE	499	
119	01400020	C	0744954	LOUISVILLE TITLE AGENCY OF NW OHIO	1907 MADISON AVE	499	
120	01400019	C	0744957	LOUISVILLE TITLE AGENCY OF NW OHIO	1915 MADISON AVE	465	
121	01400018	C	0744961	LOUISVILLE TITLE AGENCY OF NW OHIO	1919 MADISON AVE	420	
122	01401001	E	0744964	LUCAS METRO HOUSING AUTHORITY	240 21ST ST	645	
123	01400017	C	0745043	LOUISVILLE TITLE AGENCY OF NW OHIO	230 20TH ST	499	
124	01400011	C	0745061	JAYCE PROPERTIES LLC	214 20TH ST	429	
125	01400021	C	0745065	MIDLAND AGENCY OF NORTHWEST OHIO INC TRUSTEE			
126	01400002	C	0745076	LOUISVILLE TITLE AGENCY OF NW OHIO	227 19TH ST	499	

EXHIBIT A							
#	AssrA1253No	CLASS	ParcelNo	OWNERNAME	Address	LUC	Remarks
127	01086032	C	0802567	405 N HURON STREET LLC	602 ADAMS ST	450	
128	01086032	C	0802569	405 N HURON STREET LLC	604 ADAMS ST	450	
129	01086032	C	0802571	405 N HURON STREET LLC	602 ADAMS ST	450	
130	01086032	C	0802573	405 N HURON STREET LLC	602 ADAMS ST	450	
131	01086032	C	0802575	405 N HURON STREET LLC	602 ADAMS ST	450	
132	01086032	C	0802577	405 N HURON STREET LLC	602 ADAMS ST	450	
133	01097007	C	0919287	RIVER ROAD REDEVELOPMENT II LLC AN OHIO	328 S ERIE ST	830	
134	01097006	C	0919294	RIVER ROAD REDEVELOPMENT II LLC AN OHIO	318 S ERIE ST	456	
135	01097005	C	0919297	RIVER ROAD REDEVELOPMENT II LLC AN OHIO	316 S ERIE ST	456	
136	01097004	C	0919301	GRIFFITH SHERRI A SHADIX- ETAL	314 S ERIE ST	456	
137	01097015	C	0919317	RIVER ROAD REDEVELOPMENT II LLC AN OHIO	109 NEBRASKA AVE	830	
138	01097008	C	0919347	RIVER ROAD REDEVELOPMENT II LLC AN OHIO	319 HUNT ST	830	
139	01096003	C	0919377	RIVER ROAD REDEVELOPMENT II LLC AN OHIO	201 NEBRASKA AVE	400	
140	01364004	E	1023301	TOLEDO BOARD OF EDUCATION	10 17TH ST	650	
141	01348002	E	1023302	CHERRY ST MISSION MINISTRIES CORPORATION	1501 MONROE ST	680	
142	01364001	C	1023331	1611 MONROE INVESTORS LLC	1611 MONROE ST	455	
143	01364003	C	1023361	MIDLAND AGENCY OF NORTHWEST OHIO INC	26 17TH ST	480	
144	01405007	C	1023374	CUTCHER ENTERPRISES INCAN OH CORP	5 17TH ST	452	
145	01405008	C	1023384	CUTCHER ENTERPRISES INCAN OH CORP	1708 WASHINGTON ST	480	
146	01405009	C	1023387	CUTCHER ENTERPRISES INCAN OH CORP	1710 WASHINGTON ST	480	
147	01405010	C	1023391	CUTCHER ENTERPRISES INCAN OH CORP	1718 WASHINGTON ST	480	
148	01405011	C	1023394	CUTCHER ENTERPRISES INCAN OH CORP	1716 WASHINGTON ST	480	
149	01405012	C	1023397	LOUISVILLE TITLE AGENCY FOR N W OHIO INC	1722 WASHINGTON ST	400	
150	01405015	E	1023407	CITY OF TOLEDO	1732 WASHINGTON ST	740	
151	01405016	E	1023411	CITY OF TOLEDO	1736 WASHINGTON ST	740	
152	01405017	C	1023414	LOUISVILLE TITLE AGENCY FOR N.W. OHIO,	1742 WASHINGTON ST	400	
153	01405018	C	1023417	LOUISVILLE TITLE AGENCY FOR N.W. OHIO,	1744 WASHINGTON ST	400	
154	01405036	C	1023424	LOUISVILLE TITLE AGENCY FOR N.W. OHIO,	20 19TH ST	480	
155	01405035	E	1023427	CITY OF TOLEDO	6 NORWOOD CT	740	
156	01405019	E	1023437	CITY OF TOLEDO	1 NORWOOD CT	640	
157	01405034	E	1023444	CITY OF TOLEDO	8 NORWOOD CT	740	
158	01405023	E	1023451	CITY OF TOLEDO	9 NORWOOD CT	740	
159	01405022	E	1023457	CITY OF TOLEDO	7 NORWOOD CT	740	
160	01405024	E	1023461	CITY OF TOLEDO	11 NORWOOD CT	640	
161	01405026	E	1023471	CITY OF TOLEDO	17 NORWOOD CT	740	
162	01405042	C	1023487	ST VINCENT MEDICAL CENTER	15 NORWOOD CT	400	
163	01405004	C	1023494	CUTCHER ENTERPRISES INCAN OH CORP	23 17TH ST	480	
164	01405005	C	1023497	CUTCHER ENTERPRISES INCAN OH CORP	21 17TH ST	480	
165	01405006	C	1023501	CUTCHER ENTERPRISES INCAN OH CORP	19 17TH ST	480	
166	01405001	C	1023504	MBKG PROPERTIES AN OH PT	1707 MONROE ST	455	
167	01405003	C	1023534	CUTCHER ENTERPRISES INC	29 17TH ST	480	
168	01405002	C	1023541	CUTCHER ENTERPRISES INC	31 17TH ST	480	
169	01405041	C	1023547	LOUISVILLE TITLE AGENCY FOR N.W. OHIO,	1721 MONROE ST	480	
170	01405040	C	1023561	LOUISVILLE TITLE AGENCY FOR N.W. OHIO,	1811 MONROE ST	480	
171	01405038	C	1023567	LOUISVILLE TITLE AGENCY FOR N.W. OHIO,	34 19TH ST	400	
172	01405044	C	1023569	LOUISVILLE TITLE AGENCY FOR N.W. OHIO,	1821 MONROE ST	480	
173	01405039	C	1023574	LOUISVILLE TITLE AGENCY FOR N.W. OHIO,	1821 MONROE ST	480	
174	01405037	C	1023584	LOUISVILLE TITLE AGENCY FOR N.W. OHIO,	26 19TH ST	480	
175	01405043	C	1023591	LOUISVILLE TITLE AGENCY FOR N.W. OHIO,	30 19TH ST	400	

EXHIBIT A							
#	AssrA1253No	CLASS	ParcelNo	OWNERNAME	Address	LUC	Remarks
176	01406022	C	1023594	TONNANCOUR PROPERTIES LLCA MICHIGAN LLC	1917 MONROE ST	429	
177	01406023	C	1023597	TONNANCOUR PROPERTIES LLCA MICHIGAN LLC	1907 MONROE ST	429	
178	01406001	C	1023601	TONNANCOUR PROPERTIES LLCA MICHIGAN LLC	1903 MONROE ST	429	
179	01406004	C	1023611	TONNANCOUR PROPERTIES LLCA MICHIGAN LLC	1910 BROOKWOOD AVE	429	
180	01406002	C	1023614	TONNANCOUR PROPERTIES LLCA MICHIGAN LLC	31 19TH ST	429	
181	01406003	C	1023617	TONNANCOUR PROPERTIES LLCA MICHIGAN LLC	23 19TH ST	429	
182	01406021	C	1023621	TONNANCOUR PROPERTIES LLCA MICHIGAN LLC	1915 MONROE ST	429	
183	01406020	C	1023624	TONNANCOUR PROPERTIES LLCA MICHIGAN LLC	1915 MONROE ST	429	
184	01406019	C	1023627	SFTF LLC	1919 MONROE ST	429	
185	01406018	C	1023634	GABRIEL ROBERT L JR	2001 MONROE ST	420	
186	01406017	C	1023637	GABRIEL ROBERT L JR	2005 MONROE ST	429	
187	01406016	C	1023641	GABRIEL ROBERT L JR	2009 MONROE ST	480	
188	01406015	C	1023644	GABRIEL ROBERT L JR	2019 MONROE ST	480	
189	01406014	C	1023647	GABRIEL ROBERT L JR	2023 MONROE ST	480	
190	01406012	C	1023751	GABRIEL ROBERT L JR	24 21ST ST	480	
191	01406011	C	1023761	GABRIEL ROBERT L JR	1934 BROOKWOOD AVE	480	
192	01406010	C	1023764	GABRIEL ROBERT L JR	1932 BROOKWOOD AVE	480	
193	01406009	C	1023767	GABRIEL ROBERT L JR	1930 BROOKWOOD AVE	480	
194	01406008	C	1023771	GABRIEL THERESA M	1928 BROOKWOOD AVE	400	
195	01406006	C	1023777	TONNANCOUR PROPERTIES LLCA MICHIGAN LLC	1918 BROOKWOOD AVE	429	
196	01406024	C	1023781	TONNANCOUR PROPERTIES LLCA MICHIGAN LLC	1912 MONROE ST	429	
197	01406005	C	1023784	TONNANCOUR PROPERTIES LLCA MICHIGAN LLC	1914 BROOKWOOD AVE	429	
198	01407001	E	1023787	CITY OF TOLEDO	21 19TH ST	740	
199	01407002	E	1023794	SPENCER ROSEMARY ET AL	19 19TH ST	685	
200	01407003	E	1023797	CITY OF TOLEDO	17 19TH ST	640	
201	01407023	C	1023807	ROSCOE OTIS III &BOBBIE E	1919 BROOKWOOD AVE	401	
202	01407022	E	1023811	CITY OF TOLEDO	1921 BROOKWOOD AVE	740	
203	01407021	E	1023814	CITY OF TOLEDO	1923 BROOKWOOD AVE	740	
204	01407020	E	1023817	CITY OF TOLEDO	1925 BROOKWOOD AVE	740	
205	01407019	E	1023821	CITY OF TOLEDO	1931 BROOKWOOD AVE	740	
206	01407018	E	1023824	CITY OF TOLEDO	1937 BROOKWOOD AVE	740	
207	01407017	E	1023827	CITY OF TOLEDO	1941 BROOKWOOD AVE	740	
208	01407016	E	1023831	CITY OF TOLEDO	18 21ST ST	740	
209	01407012	E	1023931	CITY OF TOLEDO	1934 WASHINGTON ST	640	
210	01407011	E	1023934	CITY OF TOLEDO	1930 WASHINGTON ST	740	
211	01407010	E	1023937	CITY OF TOLEDO	1926 WASHINGTON ST	740	
212	01407009	E	1023941	CITY OF TOLEDO	1922 WASHINGTON ST	740	
213	01407008	E	1023944	CITY OF TOLEDO	1920 WASHINGTON ST	740	
214	01407007	E	1023947	CITY OF TOLEDO	1914 WASHINGTON ST	740	
215	01407006	E	1023951	CITY OF TOLEDO	1912 WASHINGTON ST	740	
216	01407005	E	1023954	LUCAS COUNTY LAND REUTILIZATION CORP	1908 WASHINGTON ST	740	
217	01362001	C	1024627	HISTORIC HILLCREST INVESTMENT LLC AN OHI	1603 MADISON AVE	403	
218	01362009	C	1024664	I M TEXTILE LLC	1616 JEFFERSON AVE	440	
219	01362009	E	1024666	I M TEXTILE LLC	1616 JEFFERSON AVE	710	
220	01362008	C	1024677	TOLEDO CLUB, THE AN OHIONON-PROFIT CORP	1608 JEFFERSON AVE	456	

EXHIBIT A							
#	AssrA1253No	CLASS	ParcelNo	OWNERNAME	Address	LUC	Remarks
221	01362007	C	1024681	TOLEDO CLUB, THE AN OHIONON-PROFIT CORP	1604 JEFFERSON AVE	456	
222	01363002	E	1024711	RITTER CHARLES F REVERENDADMIN. FOR THE	123 16TH ST	685	
223	01363003	E	1024714	RITTER CHARLES F REVERENDADMIN. FOR THE	119 16TH ST	685	
224	01363004	E	1024717	RITTER CHARLES F REVERENDADMIN. FOR THE	115 16TH ST	685	
225	01363005	C	1024721	A.O.R. ENTERPRISES INC AN OHIO CORPORATI	105 16TH ST	449	
226	01363006	E	1024731	LUCAS COUNTY LAND REUTILIZATION CORPORAT	1602 MONROE ST	740	
227	01363007	C	1024737	TIREMAN DOWNTOWN LTD AN OHIO LIMITED LIA	1614 MONROE ST	455	
228	01365007	E	1024767	CHERRY STREET MISSION ANOHIO NON PROFIT	1702 MONROE ST	680	
229	01365010	C	1024781	MBKG PROPERTIES AN OH GENPARTNERSHIP	1712 MONROE ST	455	
230	01365011	C	1024784	MBKG PROPERTIES AN OH GENPARTNERSHIP	1716 MONROE ST	452	
231	01365012	C	1024787	MBKG PROPERTIES AN OH GENPARTNERSHIP	1720 MONROE ST	455	
232	01365013	C	1024791	MBKG PROPERTIES AN OH GENPARTNERSHIP	1724 MONROE ST	455	
233	01365014	C	1024794	MBKG PROPERTIES AN OH GENPARTNERSHIP	1728 MONROE ST	455	
234	01365015	E	1024801	CHERRY STREET MISSION ANOH NON PROFIT CO	116 18TH ST	680	
235	01365016	E	1024804	CHERRY STREET MISSION ANOH NON PROFIT CO	118 18TH ST	680	
236	01365017	E	1024807	CHERRY STREET MISSION INC	120 18TH ST	680	
237	01365006	E	1024811	CHERRY ST MISSION	115 17TH ST	680	
238	01365005	E	1024817	CHERRY STREET MISSION MINISTRIES, AN OH	121 17TH ST	680	
239	01365004	E	1024821	CHERRY STREET MISSION MINISTRIES, AN OH	127 17TH ST	680	
240	01365003	E	1024824	CHERRY STREET MISSION	131 17TH ST	680	
241	01365002	E	1024827	CHERRY STREET MISSION	135 17TH ST	680	
242	01365002	C	1024828	CHERRY STREET MISSION	135 17TH ST	447	
243	01365001	C	1024831	DEEN AHMED K	137 17TH ST	420	
244	01365023	C	1024837	DEEN AHMED K	1707 JEFFERSON AVE	420	
245	01365022	C	1024841	DEEN AHMED K	1713 JEFFERSON AVE	420	
246	01365021	C	1024844	DEEN AHMED K	1717 JEFFERSON AVE	420	
247	01365020	E	1024851	CHERRY STREET MISSIONMINISTRIES	138 18TH ST	680	
248	01365019	E	1024854	CHERRY STREET MISSION MINISTRIES INC	134 18TH ST	680	
249	01365018	E	1024857	CHERRY STREET MISSION MINISTRIES INC	128 18TH ST	680	
250	01366010	C	1024861	KG FUNDING LLC A DELAWARE LIMITED LIABILITY	1718 JEFFERSON AVE	400	
251	01366009	C	1024871	KG FUNDING LLC A DELAWARE LIMITED LIABILITY	1714 JEFFERSON AVE	400	
252	01366008	C	1024874	KG FUNDING LLC A DELAWARE LIMITED LIABILITY	1708 JEFFERSON AVE	400	
253	01366007	C	1024877	KG FUNDING LLC A DELAWARE LIMITED LIABILITY	1704 JEFFERSON AVE	400	
254	01366006	C	1024887	KG FUNDING LLC A DELAWARE LIMITED LIABILITY	213 17TH ST	400	
255	01366013	C	1024897	KG FUNDING LLC A DELAWARE LIMITED LIABILITY	224 18TH ST	480	

EXHIBIT A							
#	AssrA1253No	CLASS	ParcelNo	OWNERNAME	Address	LUC	Remarks
256	01366012	C	1024901	KG FUNDING LLC A DELAWARE LIMITED LIABILITY	218 18TH ST	480	
257	01366011	C	1024904	KG FUNDING LLC A DELAWARE LIMITED LIABILITY	216 18TH ST	400	
258	01366014	C	1024907	KG FUNDING LLC A DELAWARE LIMITED LIABILITY	228 18TH ST	480	
259	01366002	C	1024921	KG FUNDING LLC A DELAWARE LIMITED LIABILITY	229 17TH ST	480	
260	01366001	C	1024937	KG FUNDING LLC A DELAWARE LIMITED LIABILITY	231 17TH ST	400	
261	01399020	C	1024954	MIDLAND AGENCY OF NORTHWEST OHIO INC TRUSTEE	208 19TH ST	400	
262	01399011	C	1024961	MIDLAND AGENCY OF NORTHWEST OHIO INC TRUSTEE	1818 JEFFERSON AVE	400	
263	01399010	C	1024967	MIDLAND AGENCY OF NORTHWEST OHIO INC TRUSTEE	1814 JEFFERSON AVE	447	
264	01399009	C	1024971	MIDLAND AGENCY OF NORTHWEST OHIO INC TRUSTEE	1810 JEFFERSON AVE	447	
265	01399008	C	1024974	MIDLAND AGENCY OF NORTHWEST OHIO INC TRUSTEE	1808 JEFFERSON AVE	400	
266	01399007	C	1024977	MIDLAND AGENCY OF NORTHWEST OHIO INC TRUSTEE	1802 JEFFERSON AVE	400	
267	01399006	C	1024984	MIDLAND AGENCY OF NORTHWEST OHIO INC TRUSTEE	213 18TH ST	400	
268	01399004	C	1024991	MIDLAND AGENCY OF NORTHWEST OHIO INC TRUSTEE	223 18TH ST	400	
269	01399003	C	1024994	MIDLAND AGENCY OF NORTHWEST OHIO INC TRUSTEE	227 18TH ST	400	
270	01399002	C	1024997	MIDLAND AGENCY OF NORTHWEST OHIO INC TRUSTEE	229 18TH ST	400	
271	01399013	C	1025004	MIDLAND AGENCY OF NORTHWEST OHIO INC TRUSTEE	224 19TH ST	400	
272	01399021	C	1025007	MIDLAND AGENCY OF NORTHWEST OHIO INC TRUSTEE	212 19TH ST	400	
273	01399022	C	1025011	MIDLAND AGENCY OF NORTHWEST OHIO INC TRUSTEE	222 19TH ST	400	
274	01399012	C	1025014	MIDLAND AGENCY OF NORTHWEST OHIO INC TRUSTEE	212 19TH ST	400	
275	01404015	C	1025017	LONG FAMILY VENTURES LLC AN OHIO LLC	1811 JEFFERSON AVE	455	
276	01404012	C	1025021	MBKG PROPERTIES AN OH GENPT	128 19TH ST	400	
277	01404013	C	1025024	CHANNING WILLIAMS A	132 19TH ST	400	
278	01404014	C	1025027	AOSSEY MAY G	1819 JEFFERSON AVE	429	
279	01404002	E	1025037	MBKG PROPERTIES LLC	131 18TH ST	740	
280	01404003	C	1025044	MBKG PROPERTIES AN OH GEN PARTNERSHIP	127 18TH ST	455	
281	01404011	C	1025071	MBKG PROPERTIES AN OH GENPT	122 19TH ST	400	
282	01404010	C	1025074	MBKG PROPERTIES AN OH GENPT	120 19TH ST	400	
283	01404009	C	1025077	MBKG PROPERTIES AN OH GENPT	114 19TH ST	400	
284	01404018	C	1025081	MBKG PROPERTIES AN OH PT	1816 MONROE ST	455	
285	01404008	C	1025091	MBKG PROPERTIES AN OH PT	1804 MONROE ST	455	
286	01404007	C	1025101	MBKG PROPERTIES AN OH GENPARTNERSHIP	111 18TH ST	420	
287	01404004	C	1025104	MBKG PROPERTIES AN OH GEN PARTNERSHIP	123 18TH ST	400	
288	01404005	C	1025107	MBKG PROPERTIES AN OH GEN PARTNERSHIP	117 18TH ST	455	
289	01404006	C	1025111	MBKG PROPERTIES AN OH GEN PARTNERSHIP	111 18TH ST	455	
290	01403015	C	1025137	TOLEDO RESCUE MISSION INCAN OH	124 20TH ST	419	

EXHIBIT A							
#	AssrA1253No	CLASS	ParcelNo	OWNERNAME	Address	LUC	Remarks
291	01403009	C	1025154	HOFFER JEREMIAH A & MARIAN V	109 19TH ST	447	
292	01403016	C	1025167	TOLEDO RESCUE MISSION INCAN OH	126 20TH ST	419	
293	01403017	C	1025171	TOLEDO RESCUE MISSIONINC AN OHIO NON-PRO	134 20TH ST	419	
294	01403018	C	1025174	TOLEDO RESCUE MISSION INCAN OH NON-PROF	136 20TH ST	419	
295	01403019	E	1025177	TOLEDO RESCUE MISSION	1917 JEFFERSON AVE	680	
296	01403020	C	1025184	TOLEDO RESCUE MISSION	1915 JEFFERSON AVE	419	
297	01403001	C	1025187	RANDYS AUTO SERVICE LLC AN OHIO LLC	1911 JEFFERSON AVE	452	
298	01403002	C	1025204	TOLEDO RESCUE MISSION	135 19TH ST	400	
299	01403003	C	1025207	HOGAN DAMON	131 19TH ST	480	
300	01400010	C	1025214	JAYCE PROPERTIES LLC	1920 JEFFERSON AVE	429	
301	01400007	C	1025231	MUSABYIMANA MARTIN	1902 JEFFERSON AVE	401	
302	01402015	C	1025241	MERCY HEALTH NORTH LLC,AN OHIO LLC	130 21ST ST	447	
303	01402016	C	1025244	MERCY HEALTH NORTH LLC,AN OHIO LLC	132 21ST ST	456	
304	01402017	C	1025247	MERCY HEALTH NORTH LLC,AN OHIO LLC	134 21ST ST	456	
305	01402018	C	1025251	FORT MEIGS CO	134 21ST ST	400	
306	01402020	E	1025254	CITY OF TOLEDO	2019 JEFFERSON AVE	740	
307	01402022	C	1025271	HILL FRED JEROME JR	2007 JEFFERSON AVE	453	
308	01402010	C	1025294	JASMINE PROPERTIES LLC	2008 MONROE ST	456	
309	01402008	C	1025307	GABRIEL THERESA M	115 20TH ST	400	
310	01402009	C	1025311	GABRIEL THERESA M	2006 MONROE ST	400	
311	01402014	C	1025331	MERCY HEALTH NORTH LLC,AN OHIO LLC	122 21ST ST	447	
312	01402013	C	1025334	MANITOU BEACH PRODUCTS, INC	120 21ST ST	455	
313	01402012	C	1025337	MANITOU BEACH PRODUCTS, INC	118 21ST ST	455	
314	01048019	C	1153478	PLT HOLDINGS LLC TRUSTEE A LIMITED	401 MADISON AVE	449	
315	01012002	C	1156901	SWAN CRICK RENTALS LLC ANOHIO LLC	151 S ST CLAIR ST	480	
316	01090006	E	1200005	GIAMMARCO PROPERTIES LLC AN OHIO LLC	609 MONROE ST	710	
317	01133005	E	1200006	LORENZEN COMPANY LLC AN OHIO LLC THE	814 WASHINGTON ST	710	
318	01098001	E	1200007	AMA SUPERIOR LLC AN OHIO LIMITED LIABILI	101 WABASH ST	710	
319	01054008	E	1200008	WAREHOUSE PARTNERS LTD	122 S ST CLAIR ST	710	
320	01053002	E	1200009	JAG TAVERN INC AN OHIO CORPORATION	407 WASHINGTON ST	710	
321	01090001	E	1200010	IBC INC AN OHIO CORPORATION	619 MONROE ST	710	
322	01015009	E	1200011	HENSVILLE IMPROVEMENTS LLC AN OHIO LIMIT	28 N ST CLAIR ST	710	County Parcel
323	01017015	E	1200014	PROMEDICA HEALTH SYSTEM, INC	202 N SUMMIT ST	710	
324	01098012	E	1200015	AMA SUPERIOR LLC AN OHIOLIMITED LIABILI	115 WABASH ST	710	
325	01006002	E	1200019	PROMEDICA DOWNTOWN CAMPUSLANDLORD LLC AN	320 WATER ST	710	
326	01091001	E	1200020	BERDAN LLC (THE)	1 S ERIE ST	710	
327	01351019	C	1209211	MIDLAND AGENCY OF NORTHWEST OHIO INC TRUSTEE	1507 ADAMS ST	400	
328	01351001	C	1209214	CREADY ROBERT A	1501 ADAMS ST	429	
329	01351002	C	1209221	MIDLAND AGENCY OF NORTHWEST OHIO INC TRUSTEE	335 15TH ST	401	
330	01351018	C	1209231	MIDLAND AGENCY OF NORTHWEST OHIO INC TRUSTEE	1513 ADAMS ST	400	
331	01351017	C	1209234	GMR + RRR PROPERTIES LTD AN OHIO	1517 ADAMS ST	456	
332	01361002	C	1209254	GMR + RRR PROPERTIES LTD AN OHIO	1607 ADAMS ST	440	
333	01361001	C	1209261	GMR + RRR PROPERTIES LTD AN OHIO	1601 ADAMS ST	440	
334	01361003	C	1209267	GMR + RRR PROPERTIES LTD AN OHIO	333 16TH ST	440	
335	01361004	C	1209271	REINHART KEN E	327 16TH ST	447	
336	01361005	C	1209274	321 16TH STREET LLC	321 16TH ST	400	
337	01361018	C	1209287	GMR + RRR PROPERTIES LTD LLC AN OHIO LLC	1615 ADAMS ST	456	
338	01361017	C	1209291	GMR + RRR PROPERTIES LTD LLC AN OHIO LLC	1619 ADAMS ST	456	

EXHIBIT A							
#	AssrA1253No	CLASS	ParcelNo	OWNERNAME	Address	LUC	Remarks
339	01361015	C	1209297	CONCOR INVESTMENTS LTD ANOHIO LIMITED LI	340 17TH ST	447	
340	01361016	C	1209301	CONCOR INVESTMENTS LTD ANOHIO LIMITED LI	342 17TH ST	447	
341	01343011	C	1209317	I.B.C. INC AN OHIO CORPORATION	1400 ADAMS ST	456	
342	01343012	C	1209321	CREADY ROBERT A	1420 ADAMS ST	456	
343	01343013	C	1209324	CREADY ROBERT A	1424 ADAMS ST	456	
344	01343014	C	1209327	PASCHALIS EMMANUEL & JUDYK	1426 ADAMS ST	429	
345	01343015	C	1209334	ZDL VENTURES AN OH CORPORATION	1506 ADAMS ST	430	
346	01343020	C	1209477	PASCHALIS EMMANUEL & JUDY	1421 JACKSON ST	400	
347	01343017	C	1209487	PASCHALIS EMMANUEL & JUDY	1433 JACKSON ST	400	
348	01014002	C	1213784	BOARD OF COMMISSIONERS OF LUCAS COUNTY OH	21 N SUMMIT ST	456	County Parcel
349	01014002	E	1213785	BOARD OF COMMISSIONERS OF LUCAS COUNTY OH	21 N SUMMIT ST	620	County Parcel
350	01015008	C	1213801	DOWNTOWN TOLEDO VENTURES, LTD	23 N SUMMIT ST	465	
351	01015007	C	1213811	MIDLAND AGENCY OF NORTHWEST OHIO INC TR	31 N SUMMIT ST	447	County Parcel
352	01015005	C	1213814	MIDLAND AGENCY OF NORTHWEST OHIO INC TRU	35 N SUMMIT ST	456	County Parcel
353	01015006	C	1213817	MIDLAND AGENCY OF NORTHWEST OHIO INC TRU	33 N SUMMIT ST	456	County Parcel
354	01015004	C	1213821	MIDLAND AGENCY OF NORTHWEST OHIO INC TRU	39 N SUMMIT ST	456	County Parcel
355	01015003	C	1213824	MIDLAND AGENCY OF NORTHWEST OHIO INC TRU	41 N SUMMIT ST	456	County Parcel
356	01050004	C	1213876	LUCAS COUNTY ECONOMIC DEVELOPMENT CORPOR	141 SUMMIT ST	400	County Parcel
357	01050003	C	1213884	LUCAS COUNTY ECONOMIC DEVELOPMENT CORPOR	141 N SUMMIT ST	411	County Parcel
358	01050002	E	1213894	NEIGHBORHOOD HEALTH ASSOCIATION INC	313 JEFFERSON AVE	680	County Parcel
359	01015002	C	1213957	MIDLAND AGENCY OF NORTHWEST OHIO INC TRU	313 MONROE ST	400	County Parcel
360	01015001	C	1213964	MIDLAND AGENCY OF NORTHWEST OHIO INC TRU	321 MONROE ST	456	County Parcel
361	01015010	C	1213974	MIDLAND AGENCY OF NORTHWEST OHIO INC TRU	34 N ST CLAIR ST	429	
362	01015009	C	1213977	HENSVILLE IMPROVEMENTS LLC AN OHIO LIMIT	28 N ST CLAIR ST	430	County Parcel
363	01014001	C	1213987	MMK PROPERTIES LTD	20 N ST CLAIR ST	429	
364	01014005	C	1213994	NEIGHBORHOOD HEALTH ASSOCIATION OF TOLEDO	12 N ST CLAIR ST	429	
365	01014006	C	1213997	18 N ST CLAIR MANAGEMENT COMPANY LTD AN	18 N ST CLAIR ST	429	
366	01014003	C	1214001	8 NORTH ST CLAIR STREET VENTURES LLC	318 WASHINGTON ST	480	
367	01014003	E	1214002	8 NORTH ST CLAIR STREET VENTURES LLC	318 WASHINGTON ST	710	
368	01014007	C	1214011	8 NORTH ST CLAIR STREET VENTURES LLC	2 N ST CLAIR ST	456	
369	01014004	C	1214017	8 NORTH ST CLAIR STREET VENTURES LLC	8 N ST CLAIR ST	448	
370	01014004	E	1214018	8 NORTH ST CLAIR STREET VENTURES LLC	8 N ST CLAIR ST	710	
371	01051001	C	1214141	HILLENBRAND/ZALESKI SECOR, LLC, AN OHIO LI	425 JEFFERSON AVE	449	County Parcel
372	01053001	C	1214261	BENNETT GROWTH PROPERTIES LLC AN OHIO LIM	413 WASHINGTON ST	420	
373	01053024	C	1214262	TONY PACKO'S TOLEDO LLC	7 S SUPERIOR ST	430	
374	01053023	C	1214274	GALLIERS REAL ESTATE, LLC, AN OHIO LIMIT	15 S SUPERIOR ST	456	
375	01053022	C	1214277	GALLIERS REAL ESTATE, LLC, AN OHIO LIMIT	17 S SUPERIOR ST	456	
376	01053020	C	1214281	GALLIERS REAL ESTATE, LLC, AN OHIO LIMIT	23 S SUPERIOR ST	480	
377	01053021	C	1214284	BRETTON, INC., AN OH CORP	19 S SUPERIOR ST	420	
378	01053019	C	1214287	GALLIERS REAL ESTATE, LLC, AN OHIO LIMIT	25 S SUPERIOR ST	480	

EXHIBIT A							
#	AssrA1253No	CLASS	ParcelNo	OWNERNAME	Address	LUC	Remarks
379	01053018	C	1214294	IBC INC AN OH CORP	33 N SUPERIOR ST	456	
380	01053017	C	1214301	IBC INC AN OH CORP	41 N SUPERIOR ST	456	
381	01053016	C	1214307	IBC INC AN OH CORP	416 LAFAYETTE ST	456	
382	01053011	C	1214344	M.E. LLC	28 S ST CLAIR ST	420	
383	01053010	C	1214347	MARKEY'S AUDIO/VISUAL INC	26 S ST CLAIR ST	439	
384	01053009	C	1214351	MARKEY'S AUDIO/VISUAL INC	22 S ST CLAIR ST	447	
385	01053008	C	1214354	JAG TAVERN INC AN OHIO CORPORATION	20 S ST CLAIR ST	430	
386	01053005	C	1214357	JAG TAVERN INC AN OHIO CORPORATION	10 S ST CLAIR ST	430	
387	01053002	C	1214367	JAG TAVERN INC AN OHIO CORPORATION	407 WASHINGTON ST	449	
388	01053003	C	1214374	JAG TAVERN INC AN OHIO CORPORATION	2 S ST CLAIR ST	430	
389	01053004	C	1214381	JAG TAVERN INC AN OHIO CORPORATION	8 S ST CLAIR ST	430	
390	01904001	C	1214385	KMOS LTD AN OHIO LLC	44 S ST CLAIR ST	401	
391	01904001	C	1214386	SUNDEVOLD RYNE A & ARDEN PONTASCH	44 S ST CLAIR ST	401	
392	01904001	C	1214387	CARTER CHRISTOPHER C & THERESE A KING	44 S ST CLAIR ST	401	
393	01904001	C	1214388	ZEHAIM MOUHAMAD Y ADOURE-	44 S ST CLAIR ST	401	
394	01904001	C	1214389	ENTENMAN JANIS L	44 S ST CLAIR ST	401	
395	01904001	C	1214390	KATO KENGO	44 S ST CLAIR ST	401	
396	01904001	C	1214391	KMOS LTD AN OHIO LLC	44 S ST CLAIR ST	401	
397	01904001	C	1214392	KMOS LTD AN OHIO LLC	44 S ST CLAIR ST	401	
398	01904001	C	1214393	TUCKER-GRAY KIM & LISA (ORSURVTC)	44 S ST CLAIR ST	401	
399	01904001	C	1214394	WAGENHAUSER MATTHEW D	44 S ST CLAIR ST	401	
400	01904001	C	1214395	SCHAETZKE ANDREW J ETAL	44 S ST CLAIR ST	401	
401	01904001	C	1214396	KMOS LTD AN OHIO LLC	44 S ST CLAIR ST	429	
402	01904001	C	1214397	KMOS LTD AN OHIO LLC	44 S ST CLAIR ST	429	
403	01904001	C	1214398	KMOS LTD AN OHIO LLC	44 S ST CLAIR ST	429	
404	01904001	C	1214399	KMOS LTD AN OHIO LLC	44 S ST CLAIR ST	429	
405	01904001	C	1214400	KMOS LTD AN OHIO LLC	44 S ST CLAIR ST	429	
406	01904001	C	1214401	KMOS LTD AN OHIO LLC	44 S ST CLAIR ST	429	
407	01904001	C	1214402	KMOS LTD AN OHIO LLC	44 S ST CLAIR ST	429	
408	01017015	C	1214418	PROMEDICA HEALTH SYSTEM, INC	202 N SUMMIT ST	457	
409	01046012	C	1214714	A & G REALTY VENTURES LLC, AN OHIO LIMIT	321 N SUMMIT ST	400	
410	01046014	C	1214721	300 MADISON BUILDING, LLC	303 N SUMMIT ST	449	
411	01049002	C	1214744	RIVERFRONT APARTMENTS LIMITED PARTNERSHI	245 N SUMMIT ST	403	
412	01049003	C	1214754	RIVERFRONT APARTMENTS LIMITED PARTNERSHI	239 N SUMMIT ST	403	
413	01049004	C	1214757	RIVERFRONT APARTMENTS LIMITED PARTNERSHI	237 N SUMMIT ST	403	
414	01049005	C	1214761	RIVERFRONT APARTMENTS LIMITED PARTNERSHI	235 N SUMMIT ST	403	
415	01049006	C	1214764	GEORGE F EYDE FAMILY LLC	215 N SUMMIT ST		
416	01049001	E	1214834	CITY OF TOLEDO	435 N ST CLAIR ST	640	
417	01049024	E	1214836	TARTA	249 SUMMIT ST	620	
418	01560001	C	1214837	GEORGE F EYDE FAMILY LLC	200 N ST CLAIR ST	450	
419	01560001	C	1214838	EYDE MAUMEE DEVELOPMENT, LLC	200 N ST CLAIR ST	450	
420	01560001	C	1214839	GEORGE F EYDE FAMILY LLC	200 N ST CLAIR ST	450	
421	01560001	C	1214840	GEORGE F EYDE FAMILY LLC	200 N ST CLAIR ST	450	
422	01045015	E	1214907	TRINITY EPISCOPAL CH	316 ADAMS ST	685	
423	01045015	C	1214908	TRINITY EPISCOPAL CH	316 ADAMS ST	499	
424	01047017	C	1214918	THEATRE BUILDING UNIT ONE LLC, AN OHIO LI	401 ADAMS ST	450	
425	01047017	C	1214919	CAD TAVERN INC AN OHIO CORPORATION	411 ADAMS ST	450	
426	01047017	C	1214920	DOWNTOWN CDC LLC AN OHIO LLC	405 ADAMS ST	450	
427	01047017	C	1214925	THEATRE BUILDING UNIT ONE LLC, AN OHIO LI	401 ADAMS ST	450	
428	01047017	C	1214926	DOWNTOWN CDC LLC AN OHIO LLC	405 ADAMS ST	450	
429	01047004	E	1214927	TOLEDO-LUCAS COUNTY PORT AUTHORITY	337 N ST CLAIR ST	620	
430	01047006	E	1214934	TOLEDO-LUCAS COUNTY PORT AUTHORITY	331 N ST CLAIR ST	620	
431	01047005	E	1214937	TOLEDO-LUCAS COUNTY PORT AUTHORITY	335 N ST CLAIR ST	620	

EXHIBIT A							
#	AssrA1253No	CLASS	ParcelNo	OWNERNAME	Address	LUC	Remarks
432	01047007	E	1214941	TOLEDO-LUCAS COUNTY PORT AUTHORITY	325 N ST CLAIR ST	620	
433	01047008	E	1214947	TOLEDO-LUCAS COUNTY PORT AUTHORITY	315 N ST CLAIR ST	620	
434	01047009	C	1214957	245 SUMMIT LTD AN OHIO LIMITED PARTNERSH	406 MADISON AVE	456	
435	01048005	E	1214981	TOLEDO-LUCAS COUNTY PORT AUTHORITY	227 N ST CLAIR ST	620	
436	01048006	E	1214987	TOLEDO-LUCAS COUNTY PORT AUTHORITY	201 N ST CLAIR ST	620	
437	01048003	C	1215057	STS MANAGEMENT INC OHIO CORPORATION	413 MADISON AVE	430	
438	01047010	C	1215061	OHIO BUILDING CO., LTD., AN OHIO LIMITED	420 MADISON AVE	449	
439	01047011	E	1215071	TOLEDO-LUCAS COUNTY PORT AUTHORITY	314 N SUPERIOR ST	620	
440	01047012	E	1215081	TOLEDO-LUCAS COUNTY PORT AUTHORITY	330 N SUPERIOR ST	620	
441	01047013	E	1215084	TOLEDO-LUCAS COUNTY PORT AUTHORITY	332 N SUPERIOR ST	620	
442	01047014	E	1215087	TOLEDO-LUCAS COUNTY PORT AUTHORITY	334 N SUPERIOR ST	620	
443	01047001	C	1215097	CAD TAVERN INC AN OHIO CORPORATION	413 ADAMS ST	447	
444	01059004	C	1215107	MIDLAND AGENCY OF NORTHWEST OHIO INC	245 N SUPERIOR ST	444	County Parcel
445	01059005	C	1215118	SUPERIOR STREET LLC	241 N SUPERIOR ST	449	
446	01059014	E	1215154	BOARD OF COUNTY COMMISSIONERS OF LUCAS C	500 JEFFERSON AVE	620	County Parcel
447	01058007	C	1215187	MIMG XXIV COMMODORE PERRYLLC A COLORADO	123 N SUPERIOR ST	456	
448	01058008	C	1215191	MIMG XXIV COMMODORE PERRYLLC A COLORADO	121 N SUPERIOR ST	456	
449	01058009	C	1215194	MIMG XXIV COMMODORE PERRYLLC A COLORADO	115 N SUPERIOR ST	456	
450	01058011	C	1215201	MIMG XXIV COMMODORE PERRYLLC A COLORADO	508 MONROE ST	456	
451	01058019	C	1215204	CITY OF TOLEDO	514 MONROE ST	456	
452	01058040	C	1215205	MIMG XXIV COMMODORE PERRYLLC	125 N SUPERIOR ST	456	
453	01058010	C	1215207	MIMG XXIV COMMODORE PERRYLLC A COLORADO	502 N SUPERIOR ST	456	
454	01056003	C	1215271	ROOT FAMILY INVESTMENTS LTD AN OHIO LIMI	8 S SUPERIOR ST	456	
455	01056004	C	1215281	10 SOUTH SUPERIOR LLC AN OHIO LIMITED LI	10 S SUPERIOR ST	429	
456	01056006	C	1215284	COCHRANE PROPERTIES OF OHIO LLC AN OHIO	14 S SUPERIOR ST	420	
457	01056007	C	1215291	HORN HI-YO LLC AN OHIO LIMITED LIABILITY	18 S SUPERIOR ST	456	
458	01056008	C	1215294	HORN HI-YO LLC AN OHIO LIMITED LIABILITY	24 S SUPERIOR ST	456	
459	01056009	C	1215301	HORN HI-YO LLC AN OHIO LIMITED LIABILITY	34 S SUPERIOR ST	456	
460	01056010	C	1215307	IBC INC AN OH CORP	42 S SUPERIOR ST	430	
461	01056011	C	1215311	IBC INC AN OH CORP	42 S SUPERIOR ST	430	
462	01056014	I	1215321	GUSSES GEORGE TRUSTEE	37 S HURON ST	370	
463	01056012	C	1215334	43 SOUTH HURON , LLC	43 S HURON ST	420	
464	01056015	C	1215341	GUSSES GEORGE TRUSTEE	33 S HURON ST	447	
465	01056016	C	1215347	JAG TAVERN INC AN OHIO CORPORATION	25 S HURON ST	430	
466	01056017	C	1215354	ROOT FAMILY INVESTMENTS LTD AN OHIO LIMI	23 S HURON ST	456	
467	01056001	C	1215367	ROOT FAMILY INVESTMENTS LTD AN OHIO LIMI	513 WASHINGTON ST	456	
468	01058012	C	1215447	MIMG XXIV COMMODORE PERRYLLC A COLORADO	110 N HURON ST	456	
469	01058020	C	1215451	CITY OF TOLEDO	125 N SUPERIOR ST	456	
470	01058018	C	1215474	APLOCATIONS LLC AN OHIO LLC	136 N HURON ST	449	
471	01058001	E	1215481	ADVOCATES FOR BASIC LEGALEQUALITY INC AN	525 JEFFERSON AVE	680	
472	01058002	C	1215487	BARONE ENTERPRISES INC.AN OHIO CORP.	515 JEFFERSON AVE	448	
473	01058003	C	1215491	JA2 INVESTMENT LLC	513 JEFFERSON AVE	430	
474	01059021	C	1215527	HUNTINGTON NATIONAL BANK (THE)	232 N HURON ST	444	
475	01059003	C	1215534	HUNTINGTON NATIONAL BANK (THE)	513 MADISON AVE	444	

EXHIBIT A							
#	AssrA1253No	CLASS	ParcelNo	OWNERNAME	Address	LUC	Remarks
476	01059002	C	1215537	HUNTINGTON NATIONAL BANK (THE)	515 MADISON AVE	444	
477	01089004	C	1215551	EZ PARKING LLC	139 N HURON ST	456	
478	01089003	C	1215557	BARONE JOHN J II	611 JEFFERSON AVE	456	
479	01089005	C	1215564	KWIK PARKING INC	131 N HURON ST	456	
480	01089006	C	1215571	KWIK PARKING INC	129 N HURON ST	456	
481	01089007	C	1215574	OHIO BELL TELEPHONE CO	123 N HURON ST	830	
482	01089009	C	1215584	610 MONROE LLC AN OHIO LLC	610 MONROE ST	429	
483	01089008	C	1215591	ATT COMMUNICATIONS OF OHINC AN OH CORP	602 MONROE ST	456	
484	01090008	C	1215597	BECZYNSKI INC	601 MONROE ST	430	
485	01090006	C	1215611	GIAMMARCO PROPERTIES LLC AN OHIO LLC	609 MONROE ST	430	
486	01903002	C	1215612	BECZYNSKI INC AN OHIO CORPORATION	607 MONROE ST	429	
487	01903002	C	1215613	MONROE-HURON LLC AN OHIO LIMITED LIABILI	607 MONROE ST	429	
488	01090009	C	1215614	SAM OKUN PRODUCE CO	33 N HURON ST	480	
489	01090011	C	1215621	3 SECONDS LLC	27 N HURON ST	480	
490	01090010	C	1215624	3 SECONDS LLC	29 N HURON ST	480	
491	01090012	C	1215627	3 SECONDS LLC	21 N HURON ST	480	
492	01090013	C	1215634	3 SECONDS LLC	17 N HURON ST	480	
493	01090014	C	1215637	FONG JOHN W & MADONNA	13 N HURON ST	447	
494	01090016	C	1215641	3 SECONDS LLC	608 WASHINGTON ST	456	
495	01090015	C	1215647	9 NORTH HURON PARTNERS, LLC	9 N HURON ST	430	
496	01090025	C	1215654	DELDOC LLC AN OHIO LLC	11 N HURON ST	480	
497	01090025	E	1215655	DELDOC LLC AN OHIO LLC	11 N HURON ST	710	
498	01091003	C	1215664	20 SOUTH HURON LLC A MICHIGAN LLC	20 S HURON ST	430	
499	01091004	C	1215667	COMMODORE ISLAND PROPERTIES, LTD AN OH L	22 S HURON ST	447	
500	01091005	C	1215671	COMMODORE ISLAND PROPERTIES, LTD AN OH L	24 S HURON ST	447	
501	01091007	C	1215677	MANHATTAN BUILDING COPMANY (THE)	34 S HURON ST	429	
502	01091006	C	1215681	COMMODORE ISLAND PROPERTIES, LTD AN OH L	32 S HURON ST	447	
503	01091008	C	1215684	KWIK PARKING INC AN OHIO CORPORATION	36 S HURON ST	400	
504	01091009	C	1215687	KWIK PARKING INC AN OHIO CORPORATION	38 S HURON ST	456	
505	01091010	C	1215694	KWIK PARKING INC AN OHIO CORPORATION	610 LAFAYETTE ST	456	
506	01091017	C	1215704	ROOT CAROLA KIDD- TRUSTEE OF THE CAROLA	37 S ERIE ST	400	
507	01091012	I	1215711	KWIK PARKING INC AN OHIO CORPORATION	618 LAFAYETTE ST	300	
508	01091011	I	1215714	KWIK PARKING INC AN OHIO CORPORATION	614 LAFAYETTE ST	300	
509	01091014	C	1215717	KWIK PARKING INC AN OHIO CORPORATION	35 S ERIE ST	447	
510	01091015	C	1215721	MANHATTAN BUILDING COMPANY AN OHIO CORPORATION	29 S ERIE ST	447	
511	01091016	C	1215724	RKKP LLC, A MICHIGAN LIMITED LIABILITY C	23 S ERIE ST	480	
512	01091001	C	1215731	BERDAN LLC (THE)	1 S ERIE ST	403	
513	01090017	C	1215747	MAUMEE RIVER ESTATES LLC AN OHIO LIMITED	614 WASHINGTON ST	480	
514	01090018	C	1215751	MAUMEE RIVER ESTATES LLC AN OHIO LIMITED	618 WASHINGTON ST	480	
515	01090019	C	1215761	MAUMEE RIVER ESTATES LLC AN OHIO LIMITED	14 N ERIE ST	480	
516	01090020	C	1215767	KNIGHT BROTHERS REALTY LLC	22 N ERIE ST	447	
517	01090022	C	1215777	KAREEM PROPERTIES LLC AN OHIO LLC	28 N ERIE ST	429	
518	01090024	C	1215782	TOKLES KATHERINE ANASTASIA	32 N ERIE ST	456	

EXHIBIT A							
#	AssrA1253No	CLASS	ParcelNo	OWNERNAME	Address	LUC	Remarks
519	01090001	C	1215787	IBC INC AN OHIO CORPORATION	619 MONROE ST	429	
520	01090004	C	1215794	TOKLES KATHERINE ANASTASIA	613 MONROE ST	456	
521	01090003	C	1215797	TOKLES KATHERINE ANASTASIA	615 MONROE ST	456	
522	01090002	C	1215801	TOKLES KATHERINE ANASTASIA	617 MONROE ST	456	
523	01089012	C	1215817	LAVERGNE BASIL M &RONALD B TRS	114 N ERIE ST	830	
524	01089017	C	1215818	VOUDOURIS THEODORE J		456	
525	01089018	C	1215819	VOUDOURIS THEODORE J			
526	01089013	C	1215824	LAVERGNE BASIL M & RONALDB TR	118 N ERIE ST	830	
527	01089014	C	1215831	OHIO BELL TELEPHONE	128 N ERIE ST	830	
528	01089016	C	1215834	BARONE J J II	136 N ERIE ST	456	
529	01089015	C	1215837	STOCKARD BARBARA B ET AL	132 N ERIE ST	456	
530	01089001	C	1215841	RUMPF DEVELOPMENT, LTD., AN OH LTD LIABI	140 N ERIE ST	456	
531	01107007	C	1215851	RUMPF DEVELOPMENT, LTD., AN OH LTD LIABI	701 JEFFERSON AVE	449	
532	01107011	C	1215887	MOCKENSTURM MARK M CO R ETAL	121 N ERIE ST	447	
533	01107010	C	1215891	123 N ERIE LLC	123 N ERIE ST	429	
534	01107012	C	1215894	RUMPF BRUCE F	117 N ERIE ST	430	
535	01107013	C	1215897	ENOSIS OMEGA LLC AN OHIO LIMITED LIABILI	115 N ERIE ST	430	
536	01107016	C	1215901	710 MONROE STREET LLC	710 MONROE ST	429	
537	01107014	C	1215904	FRANKIE GOES TO TOWN LLC AN OHIO LIMITED LIABILTY	704 MONROE ST	430	
538	01107027	C	1215914	710 MONROE STREET LLC	111 N ERIE ST	456	
539	01106003	C	1215917	MADDAD LLC	709 MONROE ST	429	
540	01106004	C	1215921	MADDAD LLC	705 MONROE ST	447	
541	01106030	C	1215922	39 NORTH ERIE, LLC	39 ERIE ST	447	
542	01106006	C	1215931	LEASEWERKS LLC AN OH LLC	31 N ERIE ST	447	
543	01106007	C	1215934	BAF, LLC	19 N ERIE ST	447	
544	01106011	C	1215945	BAF, LLC	15 N ERIE ST	456	
545	01106014	C	1215951	ROOT FAMILY INVESTMENTS LTD AN OHIO LIMI	712 WASHINGTON ST	456	
546	01106012	C	1215957	ROOT FAMILY INVESTMENTS LTD AN OHIO LIMI	5 N ERIE ST	456	
547	01106013	C	1215964	ROOT FAMILY INVESTMENTS LTD AN OHIO LIMI	1 N ERIE ST	456	
548	01105001	C	1215971	ROOT FAMILY INVESTMENTS LTD AN OHIO LIMI	2 S ERIE ST	456	
549	01105003	C	1215977	RKKP LLC, A MICHIGAN LIMITED LIABILITY C	14 S ERIE ST	480	
550	01105002	C	1215984	RKKP LLC, A MICHIGAN LIMITED LIABILITY C	8 S ERIE ST	480	
551	01105005	C	1215987	STANDART LOFTS LLC AN OHIO LLC	34 S ERIE ST	403	
552	01105005	E	1215988	STANDART LOFTS LLC AN OHIO LLC	34 S ERIE ST	710	
553	01105006	C	1215997	15 SOUTH ONTARIO LLC AN OHIO LLC	39 S ONTARIO ST	400	
554	01105007	C	1216001	15 SOUTH ONTARIO LLC AN OHIO LLC	31 S ONTARIO ST	400	
555	01105008	C	1216007	15 SOUTH ONTARIO LLC AN OHIO LLC	25 S ONTARIO ST	480	
556	01105009	C	1216014	15 SOUTH ONTARIO LLC AN OHIO LLC	15 S ONTARIO ST	480	
557	01105010	C	1216021	15 SOUTH ONTARIO LLC AN OHIO LLC	15 S ONTARIO ST	480	
558	01106015	C	1216034	TOL FIRE FIGHTERSLOC 92 BLDG CORP	714 WASHINGTON ST	465	
559	01106017	C	1216041	IBC INC AN OHIO CORPORATION	722 WASHINGTON ST	480	
560	01106019	C	1216047	IBC INC AN OHIO CORPORATION	12 N ONTARIO ST	480	
561	01106018	C	1216051	IBC INC AN OHIO CORPORATION	8 N ONTARIO ST	480	
562	01106021	C	1216054	IBC INC AN OHIO CORPORATION	18 N ONTARIO ST	480	
563	01106020	C	1216057	IBC INC AN OHIO CORPORATION	16 N ONTARIO ST	480	
564	01106022	C	1216061	IBC INC AN OHIO CORPORATION	20 N ONTARIO ST	480	
565	01106023	C	1216064	IBC INC AN OHIO CORPORATION	22 N ONTARIO ST	480	
566	01106024	C	1216067	GIAPRO, LLC	24 N ONTARIO ST	400	
567	01106028	C	1216081	GIAPRO, LLC	28 N ONTARIO ST	480	
568	01106002	C	1216087	GIAPRO LLC AN OHIO LLC	713 MONROE ST	429	
569	01106001	C	1216094	GIAPRO LLC AN OHIO LLC	725 MONROE ST	400	

EXHIBIT A							
#	AssrA1253No	CLASS	ParcelNo	OWNERNAME	Address	LUC	Remarks
570	01107017	C	1216107	RUMPF DEVELOPMENT LTD AN OHIO LLC	714 MONROE ST	456	
571	01107018	C	1216111	RUMPF BRUCE F	716 MONROE ST	456	
572	01107020	C	1216114	RUMPF DEVELOPMENT LTD AN OHIO LLC	114 N ONTARIO ST	456	
573	01107021	C	1216117	I.B.C. INC AN OHIO CORPORATION	118 N ONTARIO ST	456	
574	01107023	C	1216121	CYNTHIA TAYLOR HOLDINGS LTD	124 N ONTARIO ST	447	
575	01107024	C	1216127	FERGUSON RICHARD W & JANET M	126 N ONTARIO ST	480	
576	01107025	I	1216134	FERGUSON RICHARD W & JANET M	134 N ONTARIO ST	340	
577	01107002	C	1216141	I.B.C. INC AN OHIO CORPORATION	713 JEFFERSON AVE	449	
578	01107001	C	1216147	IBC INC AN OHIO CORPORATION	725 JEFFERSON AVE	429	
579	01132003	C	1216157	WATER STREET DEVELOPMENT LLC	801 JEFFERSON AVE	448	
580	01132001	C	1216164	WATER STREET DEVELOPMENT LLC AN OHIO LIM	807 JEFFERSON AVE	482	
581	01132005	C	1216177	MIDLAND AGENCY OF NORTHWEST OHIO INC TRUSTEE	125 N ONTARIO ST	429	
582	01132006	C	1216184	MIDLAND AGENCY OF NORTHWEST OHIO INC TRUSTEE	119 N ONTARIO ST	429	
583	01132007	C	1216191	MIDLAND AGENCY OF NORTHWEST OHIO INC TR	113 N ONTARIO ST	456	
584	01132010	C	1216211	TRUE NORTH ENERGY LLC A DELAWARE LIMITED	808 MONROE ST	420	
585	01133009	C	1216217	KWIK PARKING INC	807 MONROE ST	456	
586	01133001	C	1216224	KWIK PARKING INC	801 MONROE ST	456	
587	01133003	C	1216237	LORENZEN C. WILLIAM TRUSTEE	25 N ONTARIO ST	447	
588	01133004	C	1216245	COLUMBIA GAS OF OHIO	810 WASHINGTON ST	830	
589	01133004	E	1216246	CITY OF TOLEDO	810 WASHINGTON ST	640	
590	01134004	C	1216297	CAIRL ROBERT W JR & JANE A	20 S ONTARIO ST	429	
591	01134005	C	1216304	CAIRL ROBERT W JR & JANE A	30 S ONTARIO ST	480	
592	01134006	C	1216307	BAKERY BUILDING LLC A MICHIGAN LIMITED	61 S ONTARIO ST	447	
593	01134007	C	1216314	MSG INVESTMENTS LTD	802 LAFAYETTE ST	401	
594	01134008	C	1216324	BAKERY BUILDING LLC A MICHIGAN LIMITED	812 LAFAYETTE ST	447	
595	01016016	C	1216327	LOUISVILLE TITLE AGENCY FOR N.W. OHIO INC.,	102 N SUMMIT ST	449	
596	01016015	C	1216337	LOUISVILLE TITLE AGENCY FOR N.W. OHIO INC.,	110 N SUMMIT ST	448	
597	01016005	C	1216344	MIDLAND AGENCY OF NORTHWEST OHIO INC TRUSTEE	126 N SUMMIT ST	448	
598	01016006	C	1216351	MIDLAND AGENCY OF NORTHWEST OHIO INC TRUSTEE	130 N SUMMIT ST	448	
599	01016007	C	1216357	MIDLAND AGENCY OF NORTHWEST OHIO INC TRUSTEE	128 N SUMMIT ST	448	
600	01016008	C	1216364	MIDLAND AGENCY OF NORTHWEST OHIO INC TRUSTEE	126 N SUMMIT ST	448	
601	01016009	C	1216371	MIDLAND AGENCY OF NORTHWEST OHIO INC TRUSTEE	124 N SUMMIT ST	449	
602	01016010	C	1216377	MIDLAND AGENCY OF NORTHWEST OHIO INC TRUSTEE	122 N SUMMIT ST	449	
603	01016011	C	1216384	MIDLAND AGENCY OF NORTHWEST OHIO INC TRUSTEE	120 N SUMMIT ST	448	
604	01016012	C	1216391	MIDLAND AGENCY OF NORTHWEST OHIO INC TRUSTEE	118 N SUMMIT ST	448	
605	01016013	C	1216397	MIDLAND AGENCY OF NORTHWEST OHIO INC TRUSTEE	116 N SUMMIT ST	448	
606	01016014	C	1216404	MIDLAND AGENCY OF NORTHWEST OHIO INC TRUSTEE	114 N SUMMIT ST	448	
607	01016003	C	1216411	MIDLAND AGENCY OF NORTHWEST OHIO INC TRUSTEE	140 N SUMMIT ST	449	
608	01016004	C	1216417	MIDLAND AGENCY OF NORTHWEST OHIO INC TRUSTEE	136 N SUMMIT ST	449	

EXHIBIT A							
#	AssrA1253No	CLASS	ParcelNo	OWNERNAME	Address	LUC	Remarks
609	01016002	C	1216424	MIDLAND AGENCY OF NORTHWEST OHIO INC TRUSTEE	126 N SUMMIT ST	449	
610	01016001	C	1216431	MIDLAND AGENCY OF NORTHWEST OHIO INC TRUSTEE	152 N SUMMIT ST	449	
611	01016017	E	1216432	CITY OF TOLEDO	116 SUMMIT ST PED. BRIDGE	640	
612	01044007	E	1216527	CITY OF TOLEDO	414 ADAMS ST	640	
613	01044009	E	1216534	CITY OF TOLEDO	424 ADAMS ST	640	
614	01131004	C	1216541	OHIO BUILDING CO TOO, LTD, AN OHIO LIMIT	229 N ONTARIO ST	455	
615	01131006	C	1216554	OHIO BUILDING CO TOO, LTD, AN OHIO LIMIT	806 JEFFERSON AVE	449	
616	01131011	C	1216564	OHIO BUILDING CO TOO, LTD, AN OHIO LIMIT	812 JEFFERSON AVE	449	
617	01108002	C	1216637	RIPLEY FREDERIC C III ET AL	709 MADISON AVE	449	
618	01108001	C	1216641	THE MANHATTAN BUILDING COMPANY	701 MADISON AVE	448	
619	01108025	C	1216647	FARMERS SAVINGS TR & COTR ET AL	709 MADISON AVE	448	
620	01108024	C	1216651	FARMERS SAVINGS & TRUSTCO TR ET AL	709 MADISON AVE	448	
621	01108023	C	1216654	FARMERS SAVINGS & TR CO TR ET AL	709 MADISON AVE	448	
622	01108022	C	1216657	BELL REALTY CO	709 MADISON AVE	448	
623	01108021	C	1216661	YOUR NEXT RESIDENCE LLC AN OHIO LIMITED	717 MADISON AVE	447	
624	01109014	C	1216664	KWIK PARKING INC	702 MADISON AVE	456	
625	01087016	C	1216674	MIDLAND AGENCY OF NORTHWEST OHIO TRUSTEE	318 N ERIE ST	456	
626	01087015	C	1216677	LOUISVILLE TITLE AGENCY FOR N.W. OHIO INC	314 N ERIE ST	456	
627	01087014	C	1216681	LOUISVILLE TITLE AGENCY FOR N.W. OHIO INC	626 MADISON AVE	449	
628	01088014	C	1216714	ROTH PHILIP J.M.	232 N ERIE ST	429	
629	01088015	C	1216717	LEWANDOWSKI PROPERTIES, LTD	234 N ERIE ST	447	
630	01088013	C	1216721	ROTH PHILIP J.M.	228 N ERIE ST	456	
631	01088012	C	1216724	L & G REALTY HOLDINGS LTD AN OHIO LLC	222 N ERIE ST	447	
632	01088008	C	1216727	EYDE GEORGE F FAMILY LLC	212 N ERIE ST	449	
633	01088009	C	1216744	EYDE GEORGE F FAMILY LLC	616 JEFFERSON AVE	447	
634	01088010	C	1216747	EYDE GEORGE F FAMILY LLC	618 JEFFERSON AVE	447	
635	01088011	C	1216751	TWO LAKE ERIE CENTER, LLC	622 JEFFERSON AVE	449	
636	01088007	C	1216761	EYDE GEORGE F FAMILY LLC	221 N HURON ST	456	
637	01088005	C	1216767	BROTHERS HOLDING COMPANY LLC AN OHIO LLC	231 N HURON ST	449	
638	01088004	C	1216771	BROTHERS HOLDING COMPANY LLC AN OHIO LLC	233 N HURON ST	430	
639	01087009	C	1216801	MIDLAND AGENCY OF NORTHWEST OHIO INC TR	323 N HURON ST	447	
640	01060001	C	1216814	MIMG LXII LASALLE, LLC	513 ADAMS ST	429	
641	01060013	C	1216824	MIMG LXII LASALLE, LLC	320 N HURON ST	429	
642	01060012	C	1216834	MIMG LXII LASALLE, LLC	322 N HURON ST	429	
643	01060010	C	1216851	SUPERIOR INVESTMENT GROUP, INC., AN OH C	500 MADISON AVE	449	
644	01060007	C	1216861	GREATER METROPOLITAN TITLE INC AS	319 N SUPERIOR ST	420	
645	01060008	C	1216864	317 SUPERIOR LLC AN OHIO LLC	317 N SUPERIOR ST	429	
646	01060009	C	1216867	TOLEDO BAR ASSOC AN OH NON-PROFIT CORP	311 N SUPERIOR ST	449	
647	01060005	C	1216871	SKOWRON ERIC	329 N SUPERIOR ST	429	
648	01060006	C	1216874	325 NORTH SUPERIOR STREET LLC	325 N SUPERIOR ST	429	
649	01060014	C	1216877	GREATER METROPOLITAN TITLE INC AS	321 N SUPERIOR ST	429	
650	01060002	C	1216881	MIMG LXII LASALLE, LLC	347 N SUPERIOR ST	456	
651	01060003	C	1216891	SAGERT PAUL D	335 N SUPERIOR ST	449	

EXHIBIT A							
#	AssrA1253No	CLASS	ParcelNo	OWNERNAME	Address	LUC	Remarks
652	01060004	C	1216894	MIDLAND AGENCY OF NORTHWEST OHIO INC TRU	331 N SUPERIOR ST	429	
653	01013002	C	1216897	BOARD OF COMMISSIONERS OF LUCAS COUNTY OH	21 DEPOT ST		County Parcel
654	01013002	E	1216898	BOARD OF COMMISSIONERS OF LUCAS COUNTY OH	21 DEPOT ST		County Parcel
655	01013001	C	1216927	SIGNIFICANT OTHER PROPERTIES LTD AN OHIO	1 S ST CLAIR ST	480	
656	01013015	I	1216938	OLD 2 NEW VENTURES LTD	15 S ST CLAIR ST	340	
657	01013013	I	1216944	BEHNFELDT VIRGIL E & MELVIN JEAN AS CO-TR	21 S ST CLAIR ST	300	
658	01013012	C	1216947	SULLIVAN PAUL R & JACQUELINE K	23 S ST CLAIR ST	447	
659	01013012	E	1216948	SULLIVAN PAUL R & JACQUELINE K	23 S ST CLAIR ST	710	
660	01013014	C	1216951	WILSON JOHN M & ARLENE SINGER	19 S ST CLAIR ST	480	
661	01013011	C	1216954	OLD 2 NEW VENTURES LTD	25 S ST CLAIR ST	420	
662	01013011	E	1216955	OLD 2 NEW VENTURES LTD	25 S ST CLAIR ST	710	
663	01013010	C	1216961	OLD 2 NEW VENTURES LTD	25 S ST CLAIR ST	447	
664	01013010	E	1216962	OLD 2 NEW VENTURES LTD	25 S ST CLAIR ST	710	
665	01013009	C	1216974	OLD 2 NEW VENTURES LTD	25 S ST CLAIR ST	447	
666	01013009	E	1216975	OLD 2 NEW VENTURES LTD	25 S ST CLAIR ST	710	
667	01013008	C	1216997	OLD 2 NEW VENTURES LTD	43 S ST CLAIR ST	447	
668	01013006	I	1217001	OLD 2 NEW VENTURES LTD	47 S ST CLAIR ST	340	
669	01013007	I	1217004	OLD 2 NEW VENTURES LTD	45 S ST CLAIR ST	340	
670	01054004	C	1217007	JACOR BROADCASTING CORP., AN OH CORP.	102 S ST CLAIR ST	456	
671	01054005	C	1217017	JACOR BROADCASTING CORP., AN OH CORP.	108 S ST CLAIR ST	456	
672	01054006	C	1217021	WAREHOUSE PARTNERS LTD	112 S ST CLAIR ST	447	
673	01054007	C	1217027	WAREHOUSE PARTNERS LTD	120 S ST CLAIR ST	447	
674	01054008	C	1217031	WAREHOUSE PARTNERS LTD	122 S ST CLAIR ST	447	
675	01054001	C	1217044	NOBLE BROADCAST OF TOLEDO INC	425 LAFAYETTE ST	499	
676	01054002	C	1217051	NOBLE BROADCAST OF TOLEDO INC	423 LAFAYETTE ST	499	
677	01054003	C	1217054	NOBLE BROADCAST OF TOLEDO INC	417 LAFAYETTE ST	499	
678	01054014	C	1217061	NOBLE BROADCAST OF TOLEDO INC	111 S SUPERIOR ST	499	
679	01054013	C	1217065	JACOR BROADCASTING CORP., AN OHIO CORP.	117 S SUPERIOR ST	480	
680	01054015	C	1217067	NOBLE BROADCAST OF TOLEDO INC	113 S SUPERIOR ST	499	
681	01055013	C	1217074	139 SOUTH HURON LLC	139 S HURON ST	480	
682	01055014	I	1217084	IBC INC AN OH CORP	129 S HURON ST	330	
683	01055011	I	1217101	IBC INC AN OH CORP	124 S SUPERIOR ST	330	
684	01055017	E	1217103	MARCK JOSEPH	123 S HURON ST	710	
685	01055010	C	1217117	AMA SUPERIOR, LLC AN OHIO LIMITED LIABILITY	118 S SUPERIOR ST	480	
686	01055005	C	1217131	AMA SUPERIOR, LLC AN OHIO LIMITED LIABILITY	513 LAFAYETTE ST	400	
687	01055001	C	1217147	IBC INC AN OH CORP	525 LAFAYETTE ST	456	
688	01055002	C	1217154	IBC INC AN OH CORP	521 LAFAYETTE ST	456	
689	01055003	C	1217157	IBC INC AN OH CORP	517 LAFAYETTE ST	456	
690	01055004	C	1217161	IBC INC AN OH CORP	515 LAFAYETTE ST	456	
691	01055016	C	1217164	AMA SUPERIOR, LLC AN OHIO LIMITED LIABILITY	111 S HURON ST	429	
692	01055016	E	1217165	AMA SUPERIOR LLC AN OH LIMITED LIABILITY	111 S HURON ST	710	
693	01055015	I	1217167	AMA SUPERIOR LLC AN OHIO LLC	115 S HURON ST	330	
694	01100019	C	1217327	STOUGH BRADLEY T	39 VANCE ST	420	
695	01100020	E	1217334	CITY OF TOLEDO	37 VANCE ST	640	
696	01099002	C	1217391	IBC INC	224 S ERIE ST	420	
697	01100014	C	1217397	I.B.C. INC AN OHIO CORPORATION	630 S 11TH ST	456	
698	01103012	E	1217424	CITY OF TOLEDO	60 LUCAS ST	740	
699	01134010	C	1217474	BAKERY BUILDING LLC A MICHIGAN LIMITED	39 S MICHIGAN ST	447	
700	01134009	C	1217484	BAKERY BUILDING LLC A MICHIGAN LIMITED	814 LAFAYETTE ST	447	

EXHIBIT A							
#	AssrA1253No	CLASS	ParcelNo	OWNERNAME	Address	LUC	Remarks
701	01134011	C	1217487	AMERCO REAL ESTATE COMPANY	801 WASHINGTON ST	480	
702	01134020	C	1217491	BAKERY BUILDING LLC A MICHIGAN LIMITED	29 S MICHIGAN ST	447	
703	01133005	C	1217527	LORENZEN COMPANY LLC AN OHIO LLC THE	814 WASHINGTON ST	401	
704	01133007	C	1217541	LORENZEN COMPANY (THE) LLC AN OHIO LIMIT	38 N MICHIGAN ST	447	
705	01133008	C	1217547	KWIK PARKING INC	40 N MICHIGAN ST	456	
706	01132011	C	1217557	TRUE NORTH ENERGY LLC A DELAWARE LIMITED	812 MONROE ST	420	
707	01132012	C	1217567	TRUE NORTH ENERGY LLC A DELAWARE LIMITED	108 N MICHIGAN ST	420	
708	01132013	C	1217571	MIDLAND AGENCY OF NORTHWEST OHIO INC TR	110 N MICHIGAN ST	456	
709	01132014	C	1217574	MIDLAND AGENCY OF NORTHWEST OHIO INC TR	128 N MICHIGAN ST	456	
710	01132016	C	1217577	MIDLAND AGENCY OF NORTHWEST OHIO INC TR	130 N MICHIGAN ST	456	
711	01131013	C	1217597	OHIO BUILDING CO TOO, LTD, AN OHIO LIMIT	818 JEFFERSON AVE	449	
712	01131012	C	1217604	OHIO BUILDING CO TOO, LTD, AN OHIO LIMIT	814 JEFFERSON AVE	449	
713	01131014	C	1217607	OHIO BUILDING CO TOO, LTD, AN OHIO LIMIT	218 N MICHIGAN ST	449	
714	01131021	C	1217611	OHIO BUILDING CO TOO, LTD, AN OHIO LIMIT	814 JEFFERSON AVE	449	
715	01131016	C	1217614	OHIO BUILDING CO TOO, LTD, AN OHIO LIMIT	220 N MICHIGAN ST	449	
716	01131015	C	1217621	OHIO BUILDING CO TOO, LTD, AN OHIO LIMIT	218 N MICHIGAN ST	449	
717	01144012	C	1217624	MIDLAND AGENCY OF NORTHWEST OHIO INC TRU	908 JEFFERSON AVE	456	
718	01143001	C	1217634	CLOCK TOWER CAPITAL LLC	901 JEFFERSON AVE	449	
719	01143002	C	1217647	CHESBROUGH INVESTMENT COMPANY LLC AN OHI	115 N MICHIGAN ST	456	
720	01143003	C	1217651	CLOCK TOWER CAPITAL LLC	103 N MICHIGAN ST	447	
721	01142002	C	1217661	SAMOS 38 LLC	909 MONROE ST	429	
722	01142003	C	1217664	SAMOS 38 LLC	907 MONROE ST	430	
723	01142004	C	1217667	SAMOS 38 LLC	903 MONROE ST	430	
724	01142005	C	1217671	SAMOS 38 LLC	901 MONROE ST	430	
725	01142007	C	1217681	MORGAN SERVICE INC	29 N MICHIGAN ST	440	
726	01142013	E	1217704	TOLEDO REPERTOIRE CO	7 N MICHIGAN ST	680	
727	01142026	C	1217705	CONSTRUX PROPERTIES LLC AN OHIO LLC	0 N MICHIGAN ST	400	
728	01142016	E	1217811	TOLEDO REPERTOIRE CO	920 WASHINGTON ST	680	
729	01142015	E	1217817	TOLEDO REPERTOIRE CO	918 WASHINGTON ST	680	
730	01142014	E	1217821	TOLEDO REPERTOIRE CO	912 WASHINGTON ST	680	
731	01142025	C	1217827	TOLEDO REPERTOIRE COMPANY	912 WASHINGTON ST	430	
732	01142017	E	1217837	TOL REPERTOIRE CO	16 10TH ST	680	
733	01142024	C	1217854	SAMOS 38 LLC	915 MONROE ST	429	
734	01142001	C	1217861	MORGAN SERVICES INC	919 MONROE ST	449	
735	01143004	C	1217867	CHESBROUGH INVESTMENT COMPANY LLC	912 MONROE ST	429	
736	01143005	C	1217877	CHESBROUGH INVESTMENT COMPANY LLC	112 10TH ST	429	
737	01143007	C	1217881	CHESBROUGH INVESTMENT COMPANY LLC AN OHI	116 10TH ST	456	
738	01143006	C	1217884	CHESBROUGH INVESTMENT COMPANY LLC AN OHI	114 10TH ST	456	
739	01143010	C	1217887	CLOCK TOWER CAPITAL LLC	122 10TH ST	447	
740	01143009	C	1217891	CLOCK TOWER CAPITAL LLC	120 10TH ST	447	
741	01143008	C	1217894	CLOCK TOWER CAPITAL LLC	118 10TH ST	447	
742	01143012	C	1217897	CLOCK TOWER CAPITAL LLC	126 10TH ST	429	
743	01143011	C	1217901	CLOCK TOWER CAPITAL LLC	124 10TH ST	429	

EXHIBIT A							
#	AssrA1253No	CLASS	ParcelNo	OWNERNAME	Address	LUC	Remarks
744	01143014	C	1217904	CLOCK TOWER CAPITAL LLC	913 JEFFERSON AVE	447	
745	01143013	C	1217907	GMR & RRR PROPERTIES LTD AN OHIO LLC	919 JEFFERSON AVE	456	
746	01144016	C	1217914	GMR & RRR PROPERTIES LTD AN OHIO LLC	210 10TH ST	440	
747	01144014	C	1217924	GMR & RRR PROPERTIES LTD AN OHIO LLC	914 JEFFERSON AVE	440	
748	01144013	C	1217927	GMR & RRR PROPERTIES LTD AN OHIO LLC	912 JEFFERSON AVE	440	
749	01315001	C	1217931	REALTY INCOME CORPORAITON	1001 JEFFERSON AVE	455	
750	01315002	C	1217941	REALTY INCOME CORPORAITON	135 10TH ST	455	
751	01315003	C	1217944	REALTY INCOME CORPORAITON	121 10TH ST	455	
752	01315006	C	1217964	KLUGE ERIK R	1004 MONROE ST	447	
753	01316001	C	1217974	MOGAN SERVICES,INC A DELCORP	1009 MONROE ST	456	
754	01316003	C	1217984	MORGAN SERVICES INC ADELAWARE CORP	33 10TH ST	456	
755	01316002	C	1217987	MORGAN SERVICES INC	35 10TH ST	456	
756	01316005	C	1217991	METZGER MARLENE G TRUSTEE	21 10TH ST	480	
757	01316004	C	1217994	MORGAN SERVICES INC ADELAWARE CORP	29 10TH ST	456	
758	01316006	C	1217997	MORGAN SERVICES INC AN ILLINOIS CORPORAT	19 10TH ST	456	
759	01316007	I	1218001	MORGAN SERVICES INC AN ILLINOIS CORPORAT	15 10TH ST	300	
760	01316018	E	1218004	TOLEDO REPERTOIRE CO	9 10TH ST	680	
761	01316008	E	1218011	TOLEDO REPERTOIRE CO	1004 WASHINGTON ST	680	
762	01316009	C	1218024	ROOT CAROLA KIDD- TRUSTEE OF THE CAROLA	1012 WASHINGTON ST	456	
763	01316010	C	1218034	I.B.C. INC.	14 11TH ST	400	
764	01316011	C	1218037	METZGER MARLENE G TRUSTEE	20 11TH ST	429	
765	01316012	C	1218041	METZGER MARLENE G TRUSTEE	26 11TH ST	447	
766	01316013	C	1218044	METZGER MARLENE G TRUSTEE	28 11TH ST	480	
767	01316014	C	1218054	METZGER MARLENE G TRUSTEE	30 11TH ST	429	
768	01316017	C	1218057	WILLIAMDEAN LLC	1013 MONROE ST	455	
769	01315012	C	1218091	YWCA OF GREATER TOLEDO HOUSING, LLC AN O	136 11TH ST	456	
770	01315011	C	1218094	YWCA OF GREATER TOLEDO HOUSING, LLC AN O	134 11TH ST	456	
771	01315013	C	1218101	YWCA OF GREATER TOLEDO HOUSING, LLC AN O	1017 JEFFERSON AVE	456	
772	01318003	I	1218111	IMAGE PROPERTY MANAGEMENTLTD AN OHIO LLC	131 11TH ST	340	
773	01318002	C	1218114	LORRAINE HOTEL 2017, LLC	137 11TH ST	400	
774	01318001	C	1218117	MIDLAND AGENCY OF NORTHWEST OHIO TRUSTEE	143 11TH ST	456	
775	01318017	C	1218127	LORRAINE HOTEL 2017, LLC	1109 JEFFERSON AVE	400	
776	01318004	I	1218131	IMAGE PROPERTY MANAGEMENTLTD AN OHIO LLC	127 11TH ST	340	
777	01318005	I	1218134	IMAGE PROPERTY MANAGEMENTLTD AN OHIO LLC	121 11TH ST	340	
778	01318006	C	1218137	SMITH BRIAN J & DEBRA	117 11TH ST	455	
779	01318007	C	1218144	SMITH BRIAN J & DEBRA	117 11TH ST	455	
780	01318008	C	1218147	MAX AUTO REAL ESTATE LLC	1102 MONROE ST	420	
781	01317005	C	1218181	MAX AUTO REAL ESTATE LLC	13 11TH ST	455	
782	01101001	C	1218594	CISTERINO NICHOLAS JAMES & JACQUELINE R	144 S 11TH ST	480	
783	01101002	E	1218605	TSCHIRRET ROBERT E JR	202 S 11TH ST	710	
784	01098002	I	1218624	HERMAD A MI CO PT	102 NEBRASKA AVE	350	
785	01098003	I	1218631	HERMAD A MI CO PT	106 NEBRASKA AVE	350	
786	01098004	I	1218634	AMA SUPERIOR LLC AN OHIO LIMITED LIABILI	112 NEBRASKA AVE	350	
787	01098005	I	1218638	AMA SUPERIOR LLC AN OHIO LIMITED LIABILI	118 NEBRASKA AVE	350	
788	01098011	C	1218641	AMA SUPERIOR LLC AN OHIO LIMITED LIABILI	109 WABASH ST	401	

EXHIBIT A							
#	AssrA1253No	CLASS	ParcelNo	OWNERNAME	Address	LUC	Remarks
789	01098012	C	1218642	AMA SUPERIOR LLC AN OHIOLIMITED LIABILI	115 WABASH ST	401	
790	01098010	C	1218645	AMA SUPERIOR LLC	132 WABASH ST	480	
791	01101003	C	1218647	TSCHIRRET ROBERT E JR	118 WABASH ST	480	
792	01317008	C	1218754	CAD TAVERN INC, AN OHIO CORP	1114 WASHINGTON ST	480	
793	01317010	I	1218757	CAD TAVERN INC, AN OHIO CORP	1122 WASHINGTON ST	300	
794	01317009	I	1218764	CAD TAVERN INC, AN OHIO CORP	1118 WASHINGTON ST	300	
795	01317011	I	1218767	CAD TAVERN INC, AN OHIO CORP	14 N 12TH ST	300	
796	01317012	C	1218771	CAD TAVERN INC, AN OHIO CORP	18 N 12TH ST	456	
797	01317018	C	1218784	MAX AUTO REAL ESTATE LLC	1101 MONROE ST	447	
798	01318009	C	1218804	MAX AUTO REAL ESTATE LLC	1112 MONROE ST	480	
799	01318011	C	1218821	LORRAINE HOTEL 2017, LLC	122 N 12TH ST	456	
800	01318012	C	1218824	LORRAINE HOTEL 2017, LLC	126 N 12TH ST	456	
801	01318013	C	1218827	STEPHEN D TAYLOR FAMILY PROPERTIES LLC	130 N 12TH ST	456	
802	01098009	C	1218914	AMA SUPERIOR LLC	125 WABASH ST	480	
803	01098006	C	1218921	AMA SUPERIOR LLC	120 NEBRASKA AVE	480	
804	01337009	C	1219011	14 13TH STREET LLC	1212 WASHINGTON ST	447	
805	01337010	C	1219014	14 13TH STREET LLC	1214 WASHINGTON ST	447	
806	01337013	C	1219021	14 13TH STREET LLC	18 N 13TH ST	447	
807	01337011	C	1219024	14 13TH STREET LLC	14 N 13TH ST	447	
808	01337012	C	1219027	14 13TH STREET LLC	16 N 13TH ST	447	
809	01337016	E	1219037	BOARD OF LUCAS COUNTY COMMISSIONERS	34 N 13TH ST	620	
810	01339005	C	1219057	NEIGHBORHOOD HEALTH ASSOCIATION OF TOLED	105 N 13TH ST	400	
811	01338001	E	1219067	BOARD OF COUNTY COMMISSIONERS OF LUCAS C	1301 MONROE ST	620	
812	01338009	E	1219104	BOARD OF COUNTY COMMISSIONERS OF LUCAS C	1302 WASHINGTON ST	620	
813	01347003	E	1219367	BOARD OF COUNTY COMMISSIONERS OF LUCAS C	1401 MONROE ST	620	
814	01347007	C	1219384	BOARD OF COUNTY COMMISSIONERS OF LUCAS C	21 N 14TH ST	456	
815	01347010	E	1219407	BOARD OF COUNTY COMMISSIONERS OF LUCAS C	1402 WASHINGTON ST	620	
816	01092013	C	1224887	KIELY JOHN	608 MARKET ST	480	
817	01092012	C	1224891	KIELY JOHN	602 MARKET ST	480	
818	01092011	C	1224894	KIELY JOHN	144 S HURON ST	480	
819	01092004	I	1224944	KWIK PARKING INC AN OHIOCORPORATION	615 LAFAYETTE ST	300	
820	01092003	I	1224947	KWIK PARKING INC AN OHIOCORPORATION	617 LAFAYETTE ST	300	
821	01092002	I	1224951	KWIK PARKING INC AN OHIOCORPORATION	623 LAFAYETTE ST	300	
822	01092001	I	1224954	KWIK PARKING INC AN OHIOCORPORATION	625 LAFAYETTE ST	300	
823	01092022	I	1224961	KWIK PARKING INC AN OHIOCORPORATION	111 S ERIE ST	300	
824	01092021	I	1224964	ABCO FIRE PROPERTIES LLC A LIMITED LIABI	115 S ERIE ST	370	
825	01092018	I	1224974	ABCO FIRE PROPERTIES LLC A LIMITED LIABI	127 S ERIE ST	370	
826	01092017	I	1224977	ABCO FIRE PROPERTIES LLC A LIMITED LIABI	131 S ERIE ST	370	
827	01092016	C	1224981	O'CONNELL PAMELA E	139 S ERIE ST	400	
828	01092015	C	1224987	O'CONNELL PAMELA	145 S ERIE ST	400	
829	01092014	C	1224991	O'CONNELL PAMELA	147 S ERIE ST	400	
830	01008001	E	1224997	CITY OF TOLEDO	120 WATER ST	640	
831	01008004	C	1224998	MIDLAND AGENCY OF NORTHWEST OHIO, INC	0 WATER ST	456	
832	01007004	C	1225087	CITY OF TOLEDO	224 WATER ST	472	
833	01006002	C	1225241	PROMEDICA DOWNTOWN CAMPUSLANDLORD LLC AN	320 WATER ST	449	

EXHIBIT A							
#	AssrA1253No	CLASS	ParcelNo	OWNERNAME	Address	LUC	Remarks
834	01006002	E	1225242	PROMEDICA DOWNTOWN CAMPUSLANDLORD LLC AN	320 WATER ST	710	
835	01006003	E	1225243	CITY OF TOLEDO	320 WATER ST	640	
836	01005016	E	1225304	CITY OF TOLEDO	1 SEAGATE	640	
837	01005035	E	1225307	CITY OF TOLEDO	1 DISCOVERY WAY/COR OF SUMMIT &	640	
838	01336014	E	1227377	BOARD OF LUCAS COUNTY COMMISSIONERS	114 N 13TH ST	620	
839	01336015	C	1227381	STEPHEN D TAYLOR FAMILY PROPERTIES LLC	120 N 13TH ST	454	
840	01336016	C	1227384	STEPHEN D TAYLOR FAMILY PROPERTIES LLC	124 N 13TH ST	454	
841	01336017	C	1227387	KONTZ ROBERT F	128 N 13TH ST	447	
842	01336018	C	1227394	TILE CLUB OF TOLEDO	130 N 13TH ST	447	
843	01336020	C	1227397	CHRIST PETE & PAULA J TRUSTEES ETAL	1217 JEFFERSON AVE	447	
844	01336001	C	1227407	WALMAN OPTICAL COMPANY A MINNESOTA CORPO	1205 JEFFERSON AVE	442	
845	01336002	C	1227417	WALMAN OPTICAL COMPANY A MINNESOTA CORPO	131 N 12TH ST	442	
846	01336003	C	1227421	WALMAN OPTICAL COMPANY A MINNESOTA CORPO	127 N 12TH ST	442	
847	01336004	C	1227427	WALMAN OPTICAL COMPANY A MINNESOTA CORPO	123 N 12TH ST	442	
848	01336005	C	1227431	WALMAN OPTICAL COMPANY A MINNESOTA CORPO	119 N 12TH ST	442	
849	01046028	C	1240101	TOLEDO-LUCAS COUNTY PORT AUTHORITY	333 SUMMIT ST	449	
850	01058022	C	1240252	MIMG XXIV COMMODORE PERRYLLC A COLORADO	501 JEFFERSON AVE	450	
851	01058022	C	1240253	MIMG XXIV COMMODORE PERRYLLC A COLORADO	501 JEFFERSON AVE	450	
852	01058022	C	1240254	MIMG XXIV COMMODORE PERRYLLC A COLORADO	501 JEFFERSON AVE	450	
853	01058022	C	1240255	MIMG XXIV COMMODORE PERRYLLC A COLORADO	501 JEFFERSON AVE	450	
854	01058022	C	1240256	MIMG XXIV COMMODORE PERRYLLC A COLORADO	501 JEFFERSON AVE	450	
855	01058022	C	1240257	MIMG XXIV COMMODORE PERRYLLC A COLORADO	501 JEFFERSON AVE	450	
856	01058022	C	1240258	MIMG XXIV COMMODORE PERRYLLC A COLORADO	501 JEFFERSON AVE	450	
857	01058022	C	1240259	MIMG XXIV COMMODORE PERRYLLC A COLORADO	501 JEFFERSON AVE	450	
858	01058022	C	1240260	MIMG XXIV COMMODORE PERRYLLC A COLORADO	501 JEFFERSON AVE	450	
859	01058022	C	1240261	MIMG XXIV COMMODORE PERRYLLC A COLORADO	501 JEFFERSON AVE	450	
860	01058022	C	1240262	MIMG XXIV COMMODORE PERRYLLC A COLORADO	501 JEFFERSON AVE	450	
861	01058022	C	1240263	MIMG XXIV COMMODORE PERRYLLC A COLORADO	501 JEFFERSON AVE	450	
862	01058022	C	1240264	MIMG XXIV COMMODORE PERRYLLC A COLORADO	501 JEFFERSON AVE	450	
863	01058022	C	1240265	MIMG XXIV COMMODORE PERRYLLC A COLORADO	501 JEFFERSON AVE	450	
864	01058022	C	1240266	MIMG XXIV COMMODORE PERRYLLC A COLORADO	501 JEFFERSON AVE	450	
865	01058022	C	1240267	MIMG XXIV COMMODORE PERRYLLC A COLORADO	501 JEFFERSON AVE	450	
866	01058022	C	1240268	MIMG XXIV COMMODORE PERRYLLC A COLORADO	501 JEFFERSON AVE	450	
867	01058022	C	1240269	ROBERTSON EMILY M (TRUSTEE)	501 JEFFERSON AVE	450	

EXHIBIT A							
#	AssrA1253No	CLASS	ParcelNo	OWNERNAME	Address	LUC	Remarks
868	01052030	E	1240400	HENSVILLE IMPROVEMENTS LLC AN OHIO LIMIT	9 N ST CLAIR ST	710	County Parcel
869	01057025	C	1240410	SHEENA MANAGEMENT PROPERTY SERVICES, LLC	523 MONROE ST	430	
870	01052027	C	1240412	RIGHT FIELD LLC	19 N ST CLAIR ST	420	
871	01052028	C	1240413	RIGHT FIELD LLC	15 N ST CLAIR ST	429	
872	01052029	C	1240414	RIGHT FIELD LLC	15 N ST CLAIR ST	420	
873	01052030	C	1240415	HENSVILLE IMPROVEMENTS LLC AN OHIO LIMIT	9 N ST CLAIR ST	429	County Parcel
874	01052032	C	1240417	BOARD OF COUNTY COMMISSIONERS OF LUCAS C	0 WASHINGTON ST	429	County Parcel
875	01052033	C	1240418	BOARD OF COUNTY COMMISSIONERS OF LUCAS C	406 WASHINGTON ST	465	County Parcel
876	01057025	E	1240446	SHEENA MANAGEMENT PROPERTY SERVICES, LLC	523 MONROE ST	710	
877	01052032	E	1240554	BOARD OF COUNTY COMMISSIONERS OF LUCAS C	0 WASHINGTON ST	620	
878	01052033	E	1240555	BOARD OF COUNTY COMMISSIONERS OF LUCAS C	0 MONROE ST	620	
879	01551001	E	1400008	PROMEDICA HEALTH SYSTEM INC AN OHIO NON	3 SEAGATE	710	
880	01093005	E	1420817	CITY OF TOLEDO	381 S ERIE ST	640	
881	01093004	E	1420831	CITY OF TOLEDO	377 S ERIE ST	640	
882	01093002	C	1420857	RIVER ROAD REDEVELOPMENT II LLC AN OHIO	329 S ERIE ST	400	
883	01096001	E	1420948	CITY OF TOLEDO	348 S ERIE ST	640	
884	01096002	E	1421037	CITY OF TOLEDO	200 HUNT ST	640	
885	01401010	C	1438817	ST VINCENT MEDICAL CENTERAN OHIO NONPROF	2020 JEFFERSON AVE	400	
886	01551002	C	1455949	FIRST TDT LLC	444 N SUMMIT ST	411	
887	01551003	C	1455950	SEAGATE LAND PARTNERS LLC	1 SEAGATE	449	
888	01551003	C	1455952	ONE SEAGATE PARTNERS LLC AN OHIO LIMITED	1 SEAGATE	449	
889	01551008	E	1455956	CITY OF TOLEDO	408 SUMMIT ST	640	
890	01551001	C	1455958	PROMEDICA HEALTH SYSTEM INC AN OHIO NON	3 SEAGATE	449	
891	01551007	E	1455959	CITY OF TOLEDO	1 DISCOVERY WAY/COR OF SUMMIT &	640	
892	01551005	C	1455963	GEORGE F EYDE FAMILY LLC	4 SEAGATE	449	
893	01551004	C	1455965	GEORGE F EYDE FAMILY LLC	4 SEAGATE	449	
894	01551006	E	1455967	TOLEDO AREA REGIONAL TRANSAUTHORITY	4 SEAGATE	620	
895	01551009	E	1455968	CITY OF TOLEDO	408 SUMMIT ST	640	
896	01551010	E	1455969	CITY OF TOLEDO	408 SUMMIT ST	640	
897	01551002	E	1455970	CITY OF TOLEDO	1 SEAGATE	640	
898	01551011	C	1455971	PROMEDICA DOWNTOWN CAMPUSLANDLORD LLC AN	408 SUMMIT ST	499	
899	01086018	E	1500013	CRANE DEVELOPMENT LTD AN OHIO LLC	614 ADAMS ST	710	
900	01086038	C	1502985	LAW OFFICES OF STEVIN J GROTH LLC	418 N ERIE ST	450	
901	01086038	C	1502986	TOLEDO LEGAL BUILDING LTDAN OHIO LIMITED	418 N ERIE ST	450	
902	01086038	C	1502987	PIPOLY JOSEF	418 N ERIE ST	450	
903	01086038	C	1502988	MILLER RYAN M	418 N ERIE ST	450	
904	01086038	C	1502989	LAW OFFICES OF STEVIN J GROTH LLC AN OHI	418 N ERIE ST	450	
905	01130015	C	1503700	MAS PROPERTY HOLDINGS LTD	320 N MICHIGAN ST	450	
906	01130015	C	1503701	MOWERY PETER ET AL	320 N MICHIGAN ST	450	
907	01130015	C	1503702	KRESS LEONARD ETAL	320 N MICHIGAN ST	450	
908	01130015	C	1503703	GONNELLA LLC	320 N MICHIGAN ST	450	

EXHIBIT A							
#	AssrA1253No	CLASS	ParcelNo	OWNERNAME	Address	LUC	Remarks
909	01087023	C	1503711	LOUISVILLE TITLE AGENCY FOR N W OHIO INC TRUSTEE	324 N ERIE ST	450	
910	01087023	C	1503712	LOUISVILLE TITLE AGENCY FOR N W OHIO INC TRUSTEE	324 N ERIE ST	450	
911	01087023	C	1503713	LOUISVILLE TITLE AGENCY FOR N W OHIO INC TRUSTEE	324 N ERIE ST	450	
912	01059022	C	1525510	HUNTINGTON NATIONAL BANK (THE)	519 MADISON AVE	450	
913	01059022	C	1525511	HUNTINGTON NATIONAL BANK (THE)	519 MADISON AVE	450	
914	01059022	C	1525512	HUNTINGTON NATIONAL BANK (THE)	519 MADISON AVE	450	
915	01059022	C	1525513	HUNTINGTON NATIONAL BANK (THE)	519 MADISON AVE	450	
916	01059022	C	1525514	HUNTINGTON NATIONAL BANK (THE)	519 MADISON AVE	450	
917	01059022	C	1525515	HUNTINGTON NATIONAL BANK (THE)	519 MADISON AVE	450	
918	01059022	C	1525516	HUNTINGTON NATIONAL BANK (THE)	519 MADISON AVE	450	
919	01059022	C	1525517	HUNTINGTON NATIONAL BANK (THE)	519 MADISON AVE	450	
920	01059022	C	1525518	HUNTINGTON NATIONAL BANK (THE)	519 MADISON AVE	450	
921	01059022	C	1525519	HUNTINGTON NATIONAL BANK (THE)	519 MADISON AVE	450	
922	01059022	C	1525520	HUNTINGTON NATIONAL BANK (THE)	519 MADISON AVE	450	
923	01005015	E	1547354	CITY OF TOLEDO	708 WATER ST	640	
924	01005014	E	1547357	CITY OF TOLEDO	700 WATER ST	640	
925	01044016	C	1547827	STLIANIDES FRIXOS	430 N SUPERIOR ST	430	
926	01044017	E	1547831	CROAK REAL ESTATE DEVELOPMENT LLC	432 N SUPERIOR ST	680	
927	01044018	E	1547834	CROAK REAL ESTATE DEVELOPMENT LLC	436 N SUPERIOR ST	680	
928	01044015	C	1547837	NICOSIA CO AN OH GEN PT	428 N SUPERIOR ST	430	
929	01044014	C	1547841	NICOSIA CO AN OH GEN PT	426 N SUPERIOR ST	430	
930	01044013	E	1547844	CITY OF TOLEDO	422 N SUPERIOR ST	640	
931	01044011	E	1547847	CITY OF TOLEDO	412 N SUPERIOR ST	640	
932	01044012	E	1547851	CITY OF TOLEDO	416 N SUPERIOR ST	640	
933	01044010	E	1547854	CITY OF TOLEDO	406 N SUPERIOR ST	640	
934	01061011	C	1547861	MACID INC	502 ADAMS ST	429	
935	01061011	E	1547862	MACID INC	502 ADAMS ST	710	
936	01061012	C	1547867	300 MADISON BUILDING LLC AN OHIO LIMITED	506 ADAMS ST	456	
937	01061010	C	1547874	300 MADISON BUILDING LLC AN OHIO LIMITED	411 N SUPERIOR ST	456	
938	01061009	C	1547877	300 MADISON BUILDING LLC AN OHIO LIMITED	413 N SUPERIOR ST	456	
939	01061008	C	1547881	300 MADISON BUILDING LLC AN OHIO LIMITED	415 N SUPERIOR ST	456	
940	01061007	C	1547884	300 MADISON BUILDING LLC AN OHIO LIMITED	421 N SUPERIOR ST	456	
941	01061006	C	1547887	300 MADISON BUILDING LLC AN OHIO LIMITED	425 N SUPERIOR ST	456	
942	01061005	C	1547891	300 MADISON BUILDING LLC AN OHIO LIMITED	429 N SUPERIOR ST	456	
943	01061003	C	1547894	300 MADISON BUILDING LLC AN OHIO LIMITED	437 N SUPERIOR ST	456	
944	01061004	C	1547897	300 MADISON BUILDING LLC AN OHIO LIMITED	435 N SUPERIOR ST	456	
945	01061001	C	1547987	300 MADISON BUILDING LLC AN OHIO LIMITED	540 N HURON ST	456	
946	01061019	C	1548007	300 MADISON BUILDING LLC AN OHIO LIMITED	422 N HURON ST	456	
947	01087006	C	1548937	CAD TAVERN INC AN OHIO CORPORATION	333 N HURON ST	444	
948	01087008	C	1548944	LOUISVILLE TITLE AGENCY FOR N.W. OHIO INC	329 N HURON ST	430	
949	01087007	C	1548951	CAD TAVERN INC AN OHIO CORPORATION	331 N HURON ST	444	
950	01087004	C	1548961	M.W.II PROPERTIES, LTD	601 ADAMS ST	435	
951	01086017	C	1548971	COCOVES TASSO C & ATHENA C CO TRUSTEES OF THE	608 ADAMS ST	420	

EXHIBIT A							
#	AssrA1253No	CLASS	ParcelNo	OWNERNAME	Address	LUC	Remarks
952	01086031	C	1548974	COCOVES TASSO C & ATHENA C CO TRUSTEES OF THE	612 ADAMS ST	420	
953	01086016	C	1548977	ADAMS STREET PROPERTIES LLC	606 ADAMS ST	448	
954	01086012	C	1548987	WEKS B LLC AN OHIO LLC	417 N HURON ST	447	
955	01086013	C	1548991	WEKS B LLC AN OHIO LLC	415 N HURON ST	447	
956	01086014	C	1548994	WEKS B LLC AN OHIO LLC	411 N HURON ST	456	
957	01086007	C	1548997	ST. PAUL'S EVANGELICAL LUTHERAN CHURCH	435 N HURON ST	456	
958	01086008	C	1549001	ST. PAUL'S EVANGELICAL LUTHERAN CHURCH	433 N HURON ST	456	
959	01086009	C	1549004	ST. PAUL'S EVANGELICAL LUTHERAN CHURCH	429 N HURON ST	456	
960	01086010	C	1549007	ST. PAUL'S EVANGELICAL LUTHERAN CHURCH	427 N HURON ST	456	
961	01086011	C	1549011	ONE STOP GROCERY STORE LLC	421 N HURON ST	429	
962	01086025	E	1549031	ST PAULS EVANGELICAL LUTHERAN CHURCH	430 N ERIE ST	685	
963	01086025	C	1549032	ST PAULS EVANGELICAL LUTHERAN CHURCH	430 N ERIE ST	499	
964	01086027	E	1549041	CITY OF TOLEDO	444 N ERIE ST	640	
965	01086026	C	1549044	ST PAULS EVAN LUTH CH	434 N ERIE ST	456	
966	01086023	C	1549047	HAMLIN INN CO	412 N ERIE ST	449	
967	01086018	C	1549054	CRANE DEVELOPMENT LTD AN OHIO LLC	614 ADAMS ST	420	
968	01086019	C	1549057	LANDFATHER DORIS	616 ADAMS ST	448	
969	01086020	C	1549061	E SHOUSER LLC	618 ADAMS ST	447	
970	01086021	C	1549064	620 ADAMS STREET LLC A LIMITED LIABILITY	620 ADAMS ST	447	
971	01086022	C	1549067	RJS NWO VENTURES LLC	624 ADAMS ST	447	
972	01087001	C	1549074	TALON RENOVATIONS LLC AN OHIO LLC	625 ADAMS ST	429	
973	01087002	C	1549081	617 ADAMS INVESTMENT LTD AN OHIO LIMITED	617 ADAMS ST	449	
974	01087003	C	1549094	COLLINS INVESTMENT PROPERTIES LLC AN OHI	615 ADAMS ST	448	
975	01087022	C	1549097	SAVOY PROPERTY DEVELOPMENT LLC AN OHIO L	338 N ERIE ST	447	
976	01087021	C	1549101	BAUMGARTNER LLC	332 N ERIE ST	430	
977	01087020	C	1549107	LOUISVILLE TITLE AGENCY OF N.W. OHIO INC AN	326 N ERIE ST	447	
978	01087017	C	1549117	MIDLAND AGENCY OF NORTHWEST OHIO TRUSTEE	322 N ERIE ST	456	
979	01109013	C	1549121	KWIK PARKING INC	311 N ERIE ST	456	
980	01109009	E	1549141	LUCAS COUNTY COMMISSIONER	701 ADAMS ST	620	
981	01902001	E	1549171	LUCAS COUNTY COMMISSIONERSBOARD OF	800 ADAMS ST	620	
982	01109001	C	1549231	LUCAS COUNTY COMMISSIONER	701 ADAMS ST	456	
983	01109001	E	1549232	LUCAS COUNTY COMMISSIONERS	701 ADAMS ST	620	
984	01109015	C	1549281	KWIK PARKING INC	714 MADISON AVE	456	
985	01130001	C	1549291	KWIK PARKING INC	819 ADAMS ST	456	
986	01130014	C	1549351	KWIK PARKING INC	823 ADAMS ST	456	
987	01130013	C	1549361	KWIK PARKING INC	322 N MICHIGAN ST	456	
988	01130011	C	1549371	SCHAICH TERRY L	318 N MICHIGAN ST	448	
989	01130010	C	1549374	SCHAICH TERRY L	314 N MICHIGAN ST	449	
990	01130009	C	1549377	SCHAICH TERRY L	312 N MICHIGAN ST	449	
991	01130007	C	1549381	SCHAICH TERRY L	316 N MICHIGAN ST	456	
992	01130007	C	1549384	MID AN BANK AN OHIO CHARTERED BANK	800 N MICHIGAN ST	456	
993	01130003	C	1549401	MID AN BANK AN OHIO CHARTERED BANK	800 MADISON AVE	444	
994	01131001	C	1549421	OHIO BUILDING CO TOO, LTD, AN OHIO LIMIT	811 MADISON AVE	449	
995	01131019	C	1549431	OHIO BUILDING CO TOO, LTD, AN OHIO LIMIT	819 MADISON AVE	449	
996	01144011	C	1549447	OHIO BUILDING CO TOO, LTD, AN OHIO LIMIT	211 N MICHIGAN ST	456	
997	01144010	C	1549457	MUNGER HAL P ETAL	225 N MICHIGAN ST	447	

EXHIBIT A							
#	AssrA1253No	CLASS	ParcelNo	OWNERNAME	Address	LUC	Remarks
998	01144009	C	1549461	NEIGHBORHOOD HEALTH ASSOCAITION OF TOLED	231 N MICHIGAN ST	447	
999	01144008	C	1549464	NEIGHBORHOOD HEALTH ASSOCAITION OF TOLED	235 N MICHIGAN ST	447	
1000	01144006	C	1549467	900 MADISON OPPORTUNITY FUND LLC	909 MADISON AVE	448	
1001	01144007	C	1549471	JACKIER LLC	901 MADISON AVE	429	
1002	01145001	E	1549477	TOLEDO-LUCAS COUNTY PUBLIC LIBRARY	325 N MICHIGAN ST	620	
1003	01146012	C	1549507	KWIK PARKING INC	401 N MICHIGAN ST	456	
1004	01146008	C	1549518	GMST LIMITED LIABILITY COMPANY	417 N MICHIGAN ST	447	
1005	01146009	C	1549521	415 MICH LTD	415 N MICHIGAN ST	448	
1006	01146011	C	1549524	411 MICH LTD	411 N MICHIGAN ST	448	
1007	01146010	C	1549527	BOERST BRUCE W JR	413 N MICHIGAN ST	448	
1008	01146001	E	1549610	LUCAS COUNTY COMMISSIONERS BOARD OF	429 N MICHIGAN ST		
1009	01146015	C	1549627	GMST LIMITED LIABILITY COMPANY	412 10TH ST	447	
1010	01146016	C	1549631	GMST LIMITED LIABILITY COMPANY	418 10TH ST	447	
1011	01146014	C	1549634	PLT HOLDINGS LLC TRUSTEE	900 ADAMS ST	449	
1012	01146013	C	1549644	PLT HOLDINGS LLC TRUSTEE	912 ADAMS ST	449	
1013	01144001	C	1549647	BRYTSPOT LLC A TEXAS LLC	919 MADISON AVE	448	
1014	01144002	C	1549651	917 MADISON AVE LLC AN OHIO LLC	917 MADISON AVE	420	
1015	01144002	E	1549652	917 MADISON AVE LLC AN OHIO LLC	917 MADISON AVE	710	
1016	01144004	C	1549654	900 MADISON OPPORTUNITY FUND LLC	913 MADISON AVE	448	
1017	01144005	C	1549657	900 MADISON OPPORTUNITY FUND LLC	911 MADISON AVE	448	
1018	01144003	C	1549661	900 MADISON OPPORTUNITY FUND LLC	915 MADISON AVE	420	
1019	01144021	C	1549664	234 10TH LLC AN OHIO LIMITED LIABILITY C	234 10TH ST	420	
1020	01144020	C	1549667	APPLOCATIONS LLC	232 10TH ST	447	
1021	01144019	C	1549671	MIDLAND AGENCY OF NORTHWEST OHIO TRUSTEE	226 10TH ST	456	
1022	01144018	C	1549677	MIDLAND AGENCY OF NORTHWEST OHIO TRUSTEE	222 10TH ST	456	
1023	01144017	C	1549681	MIDLAND AGENCY OF NORTHWEST OHIO TRUSTEE	214 10TH ST	456	
1024	01312009	C	1549737	GRAND ADAMS LTD AN OH LTDLIABILITY CO	1000 ADAMS ST	447	
1025	01312007	C	1549747	GRAND ADAMS LTD, AN OHIOLDT LIABILITY CO	417 10TH ST	447	
1026	01312020	C	1549748	INTERSTATE WAREHOUSE INC	0 10TH ST	456	
1027	01312006	C	1549751	INTERSTATE WHSE INC	421 10TH ST	456	
1028	01312004	C	1549757	445 10TH STREET LLC AN OHIO LLC	439 10TH ST	447	
1029	01312005	C	1549764	INTERSTATE WHSE INC	429 10TH ST	456	
1030	01312002	C	1549767	445 10TH STREET LLC AN OHIO LLC	443 10TH ST	449	
1031	01312003	C	1549774	445 10TH STREET LLC AN OHIO LLC	431 10TH ST	447	
1032	01312001	C	1549791	VCS PARKING PROPERTIES LLC ANOHIO LLC	440 11TH ST	456	
1033	01312018	C	1549801	VCS PARKING PROPERTIES LLC ANOHIO LLC	432 11TH ST	456	
1034	01312019	C	1549804	VCS PARKING PROPERTIES LLC ANOHIO LLC	434 11TH ST	456	
1035	01312017	C	1549811	INTERSTATE WAREHOUSEINC	428 11TH ST	456	
1036	01312016	C	1549814	INTERSTATE WAREHOUSE INC	424 11TH ST	456	
1037	01312015	C	1549817	INTERSTATE WAREHOUSE INC	422 11TH ST	456	
1038	01312014	C	1549821	INTERSTATE WAREHOUSE INC	416 11TH ST	456	
1039	01312013	C	1549827	TOP DOG PET SERVICES LLC AN OHIO LLC	1020 ADAMS ST	447	
1040	01312012	C	1549834	TOP DOG PET SERVICES LLC AN OHIO LLC	1018 ADAMS ST	447	
1041	01312011	C	1549837	TOP DOG PET SERVICES LLC AN OHIO LLC	1016 ADAMS ST	447	
1042	01312010	C	1549841	GRAND ADAMS LTD AN OH LTDLIABILITY CO	1012 ADAMS ST	447	
1043	01320013	E	1549891	GOODWILL INDUSTRIES OF NORTHWEST OHIO INC	317 11TH ST	680	
1044	01320012	E	1549894	GOODWILL INDUSTRIES OF NORTHWEST OHIO INC	317 11TH ST	680	
1045	01320011	E	1549897	GOODWILL INDUSTRIES OF NORTHWEST OHIO INC	319 11TH ST	680	
1046	01320010	C	1549901	MADISON PARTNERS LLC, AN OHIO LIMITED LI	321 11TH ST	456	

EXHIBIT A							
#	AssrA1253No	CLASS	ParcelNo	OWNERNAME	Address	LUC	Remarks
1047	01320009	C	1549904	MADISON PARTNERS LLC, AN OHIO LIMITED LI	323 11TH ST	456	
1048	01320008	C	1549907	MADISON PARTNERS LLC, AN OHIO LIMITED LI	325 11TH ST	456	
1049	01320007	C	1549911	MADISON PARTNERS LLC, AN OHIO LIMITED LI	327 11TH ST	456	
1050	01320006	C	1549914	MADISON PARTNERS LLC, AN OHIO LIMITED LI	329 11TH ST	456	
1051	01320005	C	1549917	MADISON PARTNERS LLC, AN OHIO LIMITED LI	331 11TH ST	456	
1052	01320004	C	1549921	MADISON PARTNERS LLC, AN OHIO LIMITED LI	333 11TH ST	456	
1053	01320003	C	1549924	KWIK PARKING INC	335 11TH ST	456	
1054	01320002	C	1549927	KWIK PARKING INC	337 11TH ST	456	
1055	01320028	C	1549931	FLORENCE LLC, AN OHIO LIMITED LIABILITY	1105 ADAMS ST	429	
1056	01320001	C	1549937	KWIK PARKING INC	339 11TH ST	456	
1057	01321009	C	1549944	HH ADAMS LAND GROUP LLC	1102 ADAMS ST	456	
1058	01321010	C	1549951	HH ADAMS LAND GROUP LLC	1106 ADAMS ST	456	
1059	01321011	C	1549954	HH ADAMS LAND GROUP LLC	1108 ADAMS ST	456	
1060	01321007	C	1549957	AMBORSKI JERRY E JR & MICHELE L AMBORSKI	419 11TH ST	455	
1061	01321008	C	1549961	HH ADAMS LAND GROUP LLC	407 11TH ST	456	
1062	01321004	C	1549964	AMBORSKI JERRY E JR & MICHELE L AMBORSKI	427 11TH ST	455	
1063	01321006	C	1549967	AMBORSKI JERRY E JR & MICHELE L AMBORSKI	421 11TH ST	455	
1064	01321005	C	1549971	AMBORSKI JERRY E JR & MICHELE L AMBORSKI	425 11TH ST	455	
1065	01321001	C	1549984	1107 JACKSON BUILDING LLC AN OHIO LLC	445 11TH ST	430	
1066	01321030	C	1549991	1107 JACKSON BUILDING LLC AN OHIO LLC	1109 JACKSON ST	456	
1067	01321021	C	1550007	COPFALCON LLC	426 12TH ST	455	
1068	01321019	C	1550011	COPFALCON LLC	424 12TH ST	400	
1069	01321015	C	1550017	LAUDERDALE COMPANY,LLC NO3	412 12TH ST	448	
1070	01321016	C	1550021	LAUDERDALE COMPANY,LLC NO3	414 12TH ST	448	
1071	01321017	C	1550024	LAUDERDALE COMPANY,LLC NO3	416 12TH ST	448	
1072	01321018	C	1550027	LAUDERDALE COMPANY,LLC NO3	418 12TH ST	448	
1073	01321013	C	1550031	LAUDERDALE COMPANY,LLC NO3	1114 ADAMS ST	448	
1074	01321012	C	1550034	HH ADAMS LAND GROUP LLC	1112 ADAMS ST	456	
1075	01321014	C	1550037	LAUDERDALE COMPANY,LLC NO3	1118 ADAMS ST	447	
1076	01320027	C	1550044	FLORENCE LLC, AN OHIO LIMITED LIABILITY	1111 ADAMS ST	429	
1077	01320024	C	1550054	MADISON PARTNERS LLC, AN OHIO LIMITED LI	330 12TH ST	456	
1078	01320025	C	1550057	FLORENCE LLC, AN OHIO LIMITED LIABILITY	334 12TH ST	429	
1079	01320026	C	1550061	FLORENCE LLC, AN OHIO LIMITED LIABILITY	338 12TH ST	429	
1080	01320023	C	1550064	MADISON PARTNERS LLC, AN OHIO LIMITED LI	328 12TH ST	456	
1081	01320022	C	1550067	MADISON PARTNERS LLC, AN OHIO LIMITED LI	324 12TH ST	456	
1082	01320021	C	1550071	MADISON PARTNERS LLC, AN OHIO LIMITED LI	322 12TH ST	456	
1083	01320020	C	1550074	MADISON PARTNERS LLC, AN OHIO LIMITED LI	320 12TH ST	456	
1084	01320019	E	1550077	GOODWILL INDUSTRIES OF NORTHWEST OHIO INC	316 12TH ST	680	
1085	01320018	E	1550081	GOODWILL INDUSTRIES OF NORTHWEST OHIO INC	314 12TH ST	680	
1086	01334010	C	1550084	MAD VEKTOR LLC	1212 MADISON AVE	429	
1087	01334009	E	1550087	GOODWILL INDUSTRIES OF NORTHWEST OHIO INC	1206 MADISON AVE	680	

EXHIBIT A							
#	AssrA1253No	CLASS	ParcelNo	OWNERNAME	Address	LUC	Remarks
1088	01334008	E	1550094	GOODWILL INDUSTRIES OF NORTHWEST OHIO INC	313 12TH ST	680	
1089	01334007	E	1550097	GOODWILL INDUSTRIES OF NORTHWEST OHIO INC	317 12TH ST	680	
1090	01334022	E	1550102	GOODWILL INDUSTRIES OF NORTHWEST OHIO INC	319 12TH ST	680	
1091	01334005	E	1550104	GOODWILL INDUSTRIES OF NORTHWEST OHIO INC	323 12TH ST	680	
1092	01334021	C	1550106	SHELTON DOUGLAS A	325 12TH ST	447	
1093	01334004	C	1550107	SHELTON DOUGLAS A	327 12TH ST	447	
1094	01334003	C	1550111	12TH STREET PARKING LLC	331 12TH ST	456	
1095	01334002	C	1550114	12TH STREET PARKING LLC	337 12TH ST	456	
1096	01334020	C	1550117	PASCHALIS EMMANUEL	1205 ADAMS ST	430	
1097	01334001	C	1550121	WILSON PROPERTY HOLDINGS LLC	1201 ADAMS ST	420	
1098	01333009	C	1550127	TOLEDO METRO FEDERAL CREDIT UNION	1206 ADAMS ST	445	
1099	01334018	C	1550147	PASCHALIS EMMANUEL	1215 ADAMS ST	447	
1100	01334019	C	1550154	PASCHALIS EMMANUEL	1211 ADAMS ST	447	
1101	01334017	C	1550157	SHELTON DOUGLAS A	336 13TH ST	447	
1102	01334016	C	1550161	SHELTON DOUGLAS A	334 13TH ST	447	
1103	01334015	C	1550164	SHELTON DOUGLAS A	330 13TH ST	447	
1104	01334014	C	1550167	SHELTON DOUGALS A	328 13TH ST	447	
1105	01334013	C	1550171	SHELTON DOUGLAS A	320 13TH ST	447	
1106	01334012	E	1550174	BOARD OF COUNTY COMMISSIONERS	312 13TH ST	620	
1107	01334011	C	1550181	MAD VEKTOR LLC	310 13TH ST	429	
1108	01335016	E	1550191	ST PAULS UNITED METHODISTCHURCH	1213 MADISON AVE	685	
1109	01335017	E	1550192	CAPERNAUM INC AN OHIONON-PROFIT CORP	234 13TH ST	680	
1110	01340001	E	1550207	BOARD OF EDUCATION OF THE CITY SCHOOL	1300 JEFFERSON AVE	650	
1111	01341008	C	1550267	ST PAULS METHODIST CHURCH	1302 MADISON AVE	456	
1112	01341007	C	1550314	ST PAULS UNITED METHODISTCHURCH	319 13TH ST	456	
1113	01341002	C	1550317	TORREY HILL APARTMENTS LLC	336 14TH ST	403	
1114	01341001	I	1550334	1301 ADAMS STREET LLC AN OHIO LIMITED LIABILITY	1301 ADAMS ST	300	
1115	01341013	C	1550344	1301 ADAMS STREET LLC AN OHIO LIMITED LIABILITY	1315 ADAMS ST	400	
1116	01341014	C	1550354	1301 ADAMS STREET LLC AN OHIO LIMITED LIABILITY	1311 ADAMS ST	400	
1117	01341015	C	1550371	JESJER ENTERPRISES LLC A WYOMING LIMITED	1320 MADISON AVE	449	
1118	01341009	C	1550375	SHERER DONNIE	1314 MADISON AVE	447	
1119	01345001	C	1550394	TOLEDO CLUB	1401 MADISON AVE	449	
1120	01344003	E	1550404	TOLEDO SCHOOL FOR THE ARTS	1402 MADISON AVE	670	
1121	01350001	E	1550491	CHARTER LC TOLEDO LLC	1501 MADISON AVE	670	
1122	01351009	C	1550501	CHARTER LC TOLEDO LLC	1502 MADISON AVE	456	
1123	01318015	C	1550567	LORRAINE HOTEL 2017, LLC	1117 JEFFERSON AVE	411	
1124	01318014	C	1550574	LORRAINE HOTEL 2017, LLC	132 12TH ST	400	
1125	01318016	C	1550581	LORRAINE HOTEL 2017, LLC	1111 JEFFERSON AVE	400	
1126	01335009	C	1550584	MCELHENY WILLIAM J & JOANNE B TRUSTEE	1210 JEFFERSON AVE	455	
1127	01335008	C	1550594	MCELHENY WILLIAM J & JOANNE B TRUSTEE	217 12TH ST	455	
1128	01335007	C	1550597	MCELHENY WILLIAM J & JOANNE B TRUSTEE	217 12TH ST	455	
1129	01335006	C	1550601	MCELHENY WILLIAM J & JOANNE B TRUSTEE	219 12TH ST	455	
1130	01335005	C	1550604	MADISON PARTNERS LLC, AN OHIO LIMITED LI	225 12TH ST	456	
1131	01335004	C	1550607	MADISON PARTNERS LLC, AN OHIO LIMITED LI	227 12TH ST	456	

EXHIBIT A							
#	AssrA1253No	CLASS	ParcelNo	OWNERNAME	Address	LUC	Remarks
1132	01335002	E	1550611	ST PAULS UNITED METHODISTCHURCH	235 12TH ST	685	
1133	01335003	C	1550614	MADISON PARTNERS LLC, AN OHIO LIMITED LI	231 12TH ST	456	
1134	01335001	E	1550617	ST PAULS UNITED METHODISTCHURCH	1203 MADISON AVE	685	
1135	01335015	E	1550627	ST PAUL'S COMMUNITY CENTER AN OHIO NON P	230 13TH ST	680	
1136	01335014	C	1550631	MCELHENY WILLIAM J & JOANNE B TRUSTEE	220 13TH ST	455	
1137	01335013	C	1550634	MCELHENY WILLIAM J & JOANNE B TRUSTEE	218 13TH ST	455	
1138	01335012	C	1550637	SMIDI MIKE & JAMILIE	214 13TH ST	400	
1139	01335011	C	1550641	SMIDI JAMILIE	1220 JEFFERSON AVE	435	
1140	01335010	C	1550647	MCELHENY WILLIAM J & JOANNE B TRUSTEE	1214 JEFFERSON AVE	429	
1141	01044020	C	1550650	RENAISSANCE II SENIOR HOUSING LIMITED PA	401 N ST CLAIR ST	403	
1142	01044020	E	1550652	RENAISSANCE II SENIOR HOUSING LIMITED PA	401 N ST CLAIR ST	710	
1143	01044021	E	1550660	TOLEDO CULTURAL ARTS CENTER INC	410 ADAMS ST	680	
1144	01344012	E	1565939	TOLEDO SCHOOL FOR THE ARTS	333 14TH ST	670	
1145	01344012	E	1565940	TOLEDO SCHOOL FOR THE ARTS	333 14TH ST	670	
1146	01344012	E	1565941	TOLEDO SCHOOL FOR THE ARTS	333 14TH ST	670	
1147	01344012	E	1565942	TOLEDO SCHOOL FOR THE ARTS	333 14TH ST	670	
1148	01344012	E	1565943	TOLEDO SCHOOL FOR THE ARTS	333 14TH ST	670	
1149	01344012	C	1565944	MMD RE ACQUISTION CORP	333 14TH ST	450	
1150	01344012	E	1565945	TOLEDO SCHOOL FOR THE ARTS	333 14TH ST	650	
1151	01344012	E	1565946	TOLEDO SCHOOL FOR THE ARTS	333 14TH ST	650	
1152	01344012	E	1565947	TOLEDO SCHOOL FOR THE ARTS	333 14TH ST	650	
1153	01344012	E	1565948	TOLEDO SCHOOL FOR THE ARTS	333 14TH ST	670	
1154	01344012	E	1565949	TOLEDO SCHOOL FOR THE ARTS	333 14TH ST	670	
1155	01095026	I	1621241	JAL HAMILTON LLC AN OHIO LLC	380 HUNT ST	350	
1156	01095022	I	1621271	JAL HAMILTON LLC AN OHIO LLC	152 HAMILTON ST	350	
1157	01095020	I	1621284	JAL HAMILTON LLC AN OHIO LLC	144 HAMILTON ST	350	
1158	01095018	I	1621287	JAL HAMILTON LLC AN OHIO LLC	138 HAMILTON ST	350	
1159	01095019	I	1621291	JAL HAMILTON LLC AN OHIO LLC	140 HAMILTON ST	350	
1160	01095017	C	1621294	JAL-HAMILTON LLC	136 HAMILTON ST	480	
1161	01095016	C	1621297	JAL-HAMILTON LLC	132 HAMILTON ST	480	
1162	01095015	C	1621301	JAL-HAMILTON LLC	128 HAMILTON ST	480	
1163	01095013	C	1621304	JAL-HAMILTON LLC	124 HAMILTON ST	480	
1164	01095008	E	1621321	CITY OF TOLEDO	390 S ERIE ST	640	
1165	01095004	I	1621337	HUGHJACK LLC AN OHIO LLC	386 S ERIE ST	370	
1166	01095003	I	1621341	HUGHJACK LLC AN OHIO LLC	384 S ERIE ST	370	
1167	01095002	I	1621344	HUGHJACK LLC AN OHIO LLC	380 S ERIE ST	370	
1168	01095001	I	1621347	HUGHJACK LLC AN OHIO LLC	376 S ERIE ST	370	
1169	01095033	I	1621354	HUGHJACK LLC AN OHIO LLC	121 TECUMSEH ST	370	
1170	01095032	I	1621357	HUGHJACK LLC AN OHIO LLC	123 TECUMSEH ST	370	
1171	01095031	I	1621361	HUGHJACK LLC AN OHIO LLC	125 TECUMSEH ST	370	
1172	01095030	C	1621367	JAL-HAMILTON LLC	129 TECUMSEH ST	480	
1173	01095034	I	1621377	HUGHJACK LLC AN OHIO LLC	127 TECUMSEH ST	370	
1174	01095035	E	1621378	CITY OF TOLEDO	127 TECUMSEH ST	740	
1175	01095036	I	1621379	NORFOLK SOUTHERN COMBINEDRAILROAD SUBSID	118 HAMILTON ST	300	
1176	01095028	C	1621381	JAL-HAMILTON LLC	139 TECUMSEH ST	480	
1177	01095027	I	1621384	JAL HAMILTON LLC AN OHIO LLC	145 TECUMSEH ST	350	
1178	01094001	E	1627454	LUCAS COUNTY COMMISSIONERSBOARD OF	410 S ERIE ST	620	
1179	01105004	C	1800036	STANDART PARKING LLC	730 LAFAYETTE ST	456	
1180	01093001	E	1800037	I.B.C. INC AN OHIO CORPORATION	201 S ERIE ST	710	
1181	01102002	C	1800038	CITY OF TOLEDO	0	400	
1182	01101004	C	1800039	CITY OF TOLEDO	0	400	

EXHIBIT A							
#	AssrA1253No	CLASS	ParcelNo	OWNERNAME	Address	LUC	Remarks
1183	01339013	C	1853877	NEIGHBORHOOD HEALTH ASSOCIATION OF TOLED	1317 JEFFERSON AVE	456	
1184	01339014	E	1853887	PLANNED PARENTHOOD OF NWOHIO INC	1313 JEFFERSON AVE	680	
1185	01339003	C	1853894	NEIGHBORHOOD HEALTH ASSOCIATION OF TOLED	119 13TH ST	400	
1186	01339002	E	1853911	PLANNED PARENTHOOD LG OFGREATER TOLEDO	121 13TH ST	680	
1187	01339001	E	1853914	PLANNED PARENTHOOD LG TOL	1301 JEFFERSON AVE	680	
1188	01055012	C	1871444	OKDIE MICHAEL (TRUSTEE)	140 S SUPERIOR ST	480	
1189	01012003	C	1871509	OLD 2 NEW VENTURES, LTD AN OHIO LLC	323 LAFAYETTE ST	447	
1190	01012004	C	1871510	LOUISVILLE TITLE AGENCY FOR NW OHIO INC	0 ST CLAIR ST	400	
1191	01054010	C	1871761	ZARICK MONTE	128 S ST CLAIR ST	480	
1192	01054012	I	1871781	PLATFORM II SUPERIOR LLC AN ILLINOIS LIMITED	155 S SUPERIOR ST	340	
1193	01054011	I	1871801	PLATFORM II SUPERIOR LLC AN ILLINOIS LIMITED	155 S SUPERIOR ST	340	
1194	01093001	C	1871811	I.B.C. INC AN OHIO CORPORATION	201 S ERIE ST	429	
1195	01093010	C	1871813	FARMER'S MARKET ASSOCIATION OF TOLEDO	201 S ERIE ST	420	
1196	01093006	E	1871841	CITY OF TOLEDO	385 S ERIE ST	640	
1197	01093009	E	1871851	CITY OF TOLEDO	385 S ERIE ST	640	
1198	01093007	E	1871871	CITY OF TOLEDO	401 S ERIE ST	640	
1199	01107015	C	1880241	706 PARTNERS LLC AN OHIO LIMITED LIABIL	706 MONROE ST	420	
1200	01106005	C	1880254	VOUDOURIS THEODORE J	701 MONROE ST	429	
1201	01108026	C	1880308	KWIK PARKING INC AN OHIO CORPORATION	0 N ERIE ST	456	
1202	01108027	C	1880309	MANHATTAN BUILDING COMPANY AND OHIO CORP	702 JEFFERSON AVE	444	
1203	01130002	C	1880397	KWIK PARKING INC	331 N ONTARIO ST	456	
1204	01339004	C	1881431	NEIGHBORHOOD HEALTH ASSOCIATION OF TOLED	111 13TH ST	400	
1205	01339006	C	1881434	NEIGHBORHOOD HEALTH ASSOCIATION OF TOLED	1310 MONROE ST	400	
1206	01339007	C	1881437	NEIGHBORHOOD HEALTH ASSOCIATION OF TOLED	110 14TH ST	400	
1207	01339008	C	1881447	NEIGHBORHOOD HEALTH ASSOCIATION OF TOLED	118 14TH ST	400	
1208	01339009	C	1881451	NEIGHBORHOOD HEALTH ASSOCIATION OF TOLED	124 14TH ST	400	
1209	01339010	C	1881454	NEIGHBORHOOD HEALTH ASSOCIATION OF TOLED	130 14TH ST	400	
1210	01339011	C	1881457	NEIGHBORHOOD HEALTH ASSOCIATION OF TOLED	134 14TH ST	400	
1211	01339012	C	1881464	NEIGHBORHOOD HEALTH ASSOCIATION OF TOLED	136 14TH ST	400	
1212	01346001	C	1881481	NEIGHBORHOOD HEALTH ASSOCIATION OF TOLED	1415 JEFFERSON AVE	442	
1213	01346003	C	1881504	NEIGHBORHOOD HEALTH ASSOCIATION OF TOLED	135 14TH ST	454	
1214	01346005	C	1881517	NEIGHBORHOOD HEALTH ASSOCIATION OF TOLED	123 14TH ST	454	
1215	01346006	C	1881521	117 14TH STREET LLC	117 14TH ST	454	
1216	01346007	C	1881527	117 14TH STREET LLC	117 14TH ST	454	
1217	01346008	C	1881531	117 14TH STREET LLC	1406 MONROE ST	454	
1218	01346009	C	1881544	117 14TH STREET LLC	1410 MONROE ST	454	
1219	01346010	C	1881547	117 14TH STREET LLC	1420 MONROE ST	454	
1220	01346011	C	1881557	117 14TH STREET LLC	122 15TH ST	454	
1221	01346013	C	1881564	117 14TH STREET LLC	112 15TH ST	454	

EXHIBIT A							
#	AssrA1253No	CLASS	ParcelNo	OWNERNAME	Address	LUC	Remarks
1222	01346012	C	1881567	NEIGHBORHOOD HEALTH ASSOCIATION OF TOLED	124 15TH ST	454	
1223	01350005	C	1881607	TOLEDO CLUB, THE	1502 JEFFERSON AVE	447	
1224	01350006	C	1881611	TOLEDO CLUB, THE	1502 JEFFERSON AVE	447	
1225	01350007	C	1881617	TOLEDO CLUB, THE MADISON & FOURTE	1506 JEFFERSON AVE	447	
1226	01349001	E	1881624	THE BOARD OF EDUCATION OF THE CITY SCHOOL	1505 JEFFERSON AVE	670	
1227	01349002	E	1881637	THE BOARD OF EDUCATION OF THE CITY SCHOOL	133 15TH ST	670	
1228	01349003	E	1881647	THE BOARD OF EDUCATION OF THE CITY SCHOOL	127 15TH ST	670	
1229	01349004	E	1881651	THE BOARD OF EDUCATION OF THE CITY SCHOOL	125 15TH ST	670	
1230	01349005	E	1881657	THE BOARD OF EDUCATION OF THE CITY SCHOOL	119 15TH ST	670	
1231	01349006	E	1881661	THE BOARD OF EDUCATION OF THE CITY SCHOOL	117 15TH ST	670	
1232	01349007	E	1881664	THE BOARD OF EDUCATION OF THE CITY SCHOOL	111 15TH ST	670	
1233	01349008	C	1881667	DUGIE PROPERTIES LLC	1502 MONROE ST	455	
1234	01349009	E	1881681	RITTER CHARLES F REVERENDADMIN. FOR THE	110 16TH ST	680	
1235	01349010	E	1881694	THE BOARD OF EDUCATION OF THE CITY SCHOOL	114 16TH ST	670	
1236	01349011	E	1881697	RITTER CHARLES F REVERENDADMIN. FOR THE	120 16TH ST	685	
1237	01349012	E	1881701	THE BOARD OF EDUCATION OF THE CITY SCHOOL	122 16TH ST	670	
1238	01349013	E	1881704	THE BOARD OF EDUCATION OF THE CITY SCHOOL	124 16TH ST	670	
1239	01349014	E	1881707	THE BOARD OF EDUCATION OF THE CITY SCHOOL	126 16TH ST	670	
1240	01349015	E	1881711	THE BOARD OF EDUCATION OF THE CITY SCHOOL	1519 JEFFERSON AVE	670	
1241	01349016	E	1881721	THE BOARD OF EDUCATION OF THE CITY SCHOOL	1515 JEFFERSON AVE	670	
1242	01350009	C	1881731	TOLEDO CLUB, THE	1518 JEFFERSON AVE	447	
1243	01350008	C	1881737	TOLEDO CLUB, THE	1514 JEFFERSON AVE	447	
1244	01363008	C	1881764	TIREMAN DOWNTOWN LTD AN OHIO LIMITED LIA	128 17TH ST	455	
1245	01363009	C	1881767	KOOKOOTHE JAMES P	134 17TH ST	455	
1246	01363011	C	1881774	KOOKOOTHE JAMES P	1611 JEFFERSON AVE	455	
1247	01363010	C	1881781	KOOKOOTHE JAMES P	1613 JEFFERSON AVE	454	
1248	01363001	E	1881787	BLAIR LEONARD PAUL, BISHOP OF THE ROMAN	1605 JEFFERSON AVE	685	
1249	01363013	E	1881801	RITTER CHARLES F REVERENDADMIN. FOR THE	117 16TH ST	685	
1250	01363012	E	1881807	BLAIR LEONARD PAUL, BISHOP OF THE ROMAN	1601 JEFFERSON AVE	685	
1251	01556001	E	1887591	GOLDMAN STEPHEN L TRUSTEE	145 S ST CLAIR ST	710	
1252	01556002	E	1887592	STIEHM SUSANNAH	145 S ST CLAIR ST	710	
1253	01556004	E	1887593	KEEFER TIMOTHY R & KELLY R CHILDRESS	145 S ST CLAIR ST	710	
1254	01556007	E	1887594	RAAD KRISTEN KEHOE & JOHN J (ORSURVTC)	145 S ST CLAIR ST	710	
1255	01556008	E	1887595	BEAMER LTD AN OHIO LIMITED LIABILITY COM	145 S ST CLAIR ST	710	
1256	01556009	E	1887596	REITER MARK R	145 S ST CLAIR ST	710	
1257	01556010	E	1887597	HARGER NATHANIEL A	145 S ST CLAIR ST	710	
1258	01556011	E	1887598	HARGER NATHANIEL A	145 S ST CLAIR ST	710	

EXHIBIT A							
#	AssrA1253No	CLASS	ParcelNo	OWNERNAME	Address	LUC	Remarks
1259	01556012	E	1887599	BLAUFUSS JOHN & JOCELYN	145 S ST CLAIR ST	710	
1260	01556013	E	1887600	HARTTEN JULIE L	145 S ST CLAIR ST	710	
1261	01556015	E	1887601	CARR KEVIN	145 S ST CLAIR ST	710	
1262	01556016	E	1887602	GALL WILLIAM J	145 S ST CLAIR ST	710	
1263	01556017	E	1887603	CRYAN MEGAN	145 S ST CLAIR ST	710	
1264	01556018	E	1887604	JESIONOWSKI MICHAEL T & ERIN M	145 S ST CLAIR ST	710	
1265	01556019	E	1887605	MASCARENO BRIAN E	145 S ST CLAIR ST	710	
1266	01556020	E	1887606	SHRADER THOMAS J	145 S ST CLAIR ST	710	
1267	01556021	E	1887607	CLARK LARRY C & DENISE	145 S ST CLAIR ST	710	
1268	01556022	E	1887608	MCCULLUMSMITH ROBERT E	145 S ST CLAIR ST	710	
1269	01556023	E	1887616	GALL TIFFANY P	145 S ST CLAIR ST	710	
1270	01556024	E	1887617	MORRIS MICHAEL J & KATRIAA	145 S ST CLAIR ST	710	
1271	01556025	E	1887618	MCGHEE RAMONDA D	145 S ST CLAIR ST	710	
1272	01556026	E	1887619	FIZELL TIMOTHY & KIMBERLY FIZELL	145 S ST CLAIR ST	710	
1273	01556027	E	1887620	TOTH ERIC J	145 S ST CLAIR ST	710	
1274	01556028	E	1887621	CLAUSING GREGORY R	145 S ST CLAIR ST	710	
1275	01556029	E	1887622	DAVIS BRANDON	145 S ST CLAIR ST	710	
1276	01556030	E	1887623	WORRASANGASILPA KEVIN W	145 S ST CLAIR ST	710	
1277	01556031	E	1887624	CARSON MARY J	145 S ST CLAIR ST	710	
1278	01556032	E	1887625	PICKETT MIKE J	145 S ST CLAIR ST	710	
1279	01556033	E	1887626	NIGHTINGALE ADAM S	145 S ST CLAIR ST	710	
1280	01556034	E	1887627	ULERY DAVID	145 S ST CLAIR ST	710	
1281	01556035	E	1887628	RANSOM MICHAEL W	145 S ST CLAIR ST	710	
1282	01556036	E	1887629	LINK LEO C & MEGAN L	145 S ST CLAIR ST	710	
1283	01556037	E	1887630	NOVAK RONALD P	145 S ST CLAIR ST	710	
1284	01556040	E	1887638	FARAHANI SAMIRA VASHEGHANI	145 S ST CLAIR ST	710	
1285	01556038	E	1887639	MALHOI IAN ETAL	145 S ST CLAIR ST	710	
1286	01556039	E	1887640	LINDSLEY ERIC E ETAL	145 S ST CLAIR ST	710	
1287	01104004	C	1217427	Root Jason W	49 BELMONT AVE	400	
1288	01104005	C	1217274	Root Jason W	41 BELMONT AVE	400	
1289	01104003	C	1800040	CITY OF TOLEDO		400	
1290	01104002	C	1217264	CARS HOLDING INC	20 LUCAS ST	400	
1291	01104001	C	1217181	CARS HOLDING INC	16 LUCAS	400	
1292	01009001	E	1213754	CITY OF TOLEDO	1 WORLD TRADE CENTER	640	
1293	01010004	E	1871471	CITY OF TOLEDO	17 S SUMMIT ST	640	
1294	01009002	E	1871424	CITY OF TOLEDO	1 WORLD TRADE CENTER	640	
1295	01010010	E	1871491	CITY OF TOLEDO	45 S SUMMIT ST	640	
1296	01010001	E	1871457	CITY OF TOLEDO	1 S SUMMIT ST	640	
1297	01011002	E	1871614	CITY OF TOLEDO	115 S SUMMIT ST	640	
1298	01010003	E	1871484	CITY OF TOLEDO	13 S SUMMIT ST	640	
1299	01009003	E	1871414	CITY OF TOLEDO	1 WORLD TRADE CENTER	640	
1300	01010003	E	1871484	CITY OF TOLEDO	13 S SUMMIT ST	640	
1301	01010005	E	1871477	CITY OF TOLEDO	21 S SUMMIT ST	640	
1302	01010008	E	1871487	CITY OF TOLEDO	39 S SUMMIT ST	640	
1303	01011001	C	1871537	MIDTOWN PROP	111 S SUMMIT ST	403	
1304	1547757	E	1547757	UNITED WAY OF GREATER TOLEDO AN OHIO NON	1 STRANAHAN SQ	680	