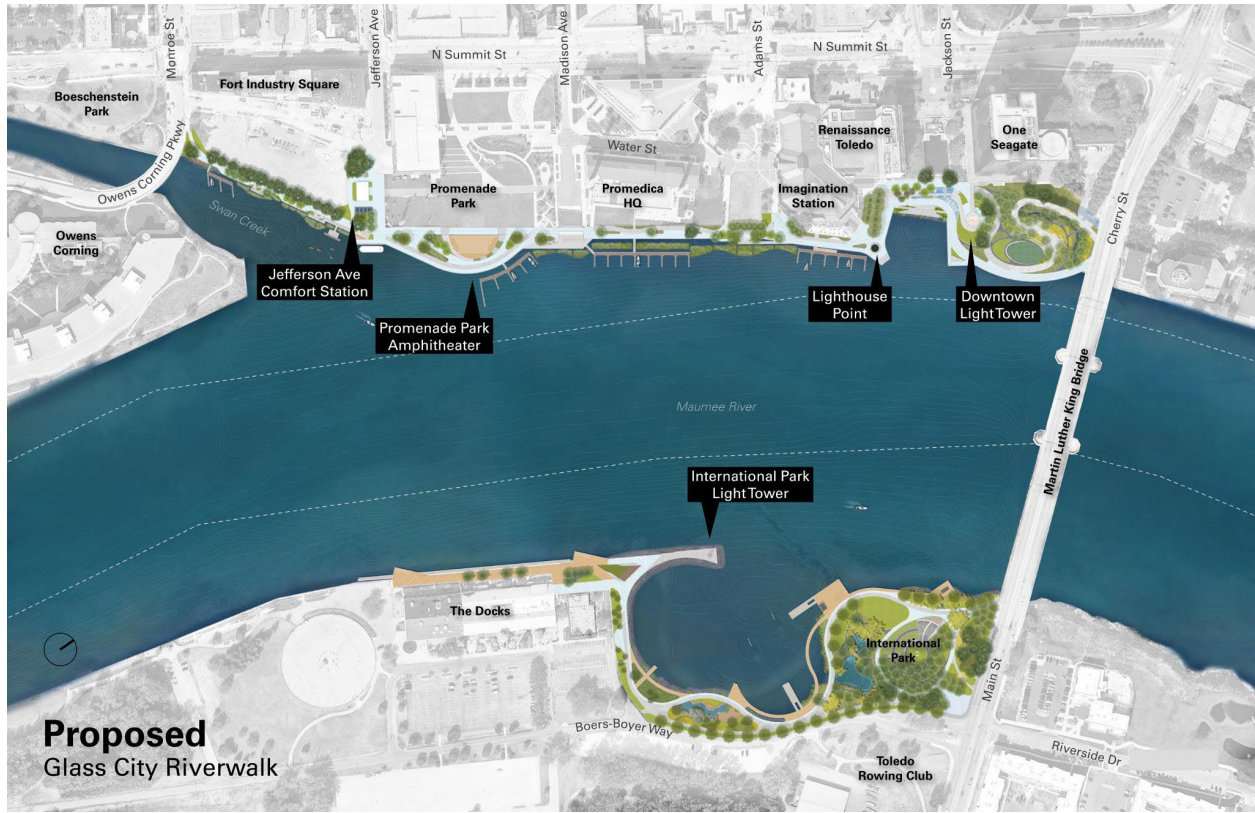
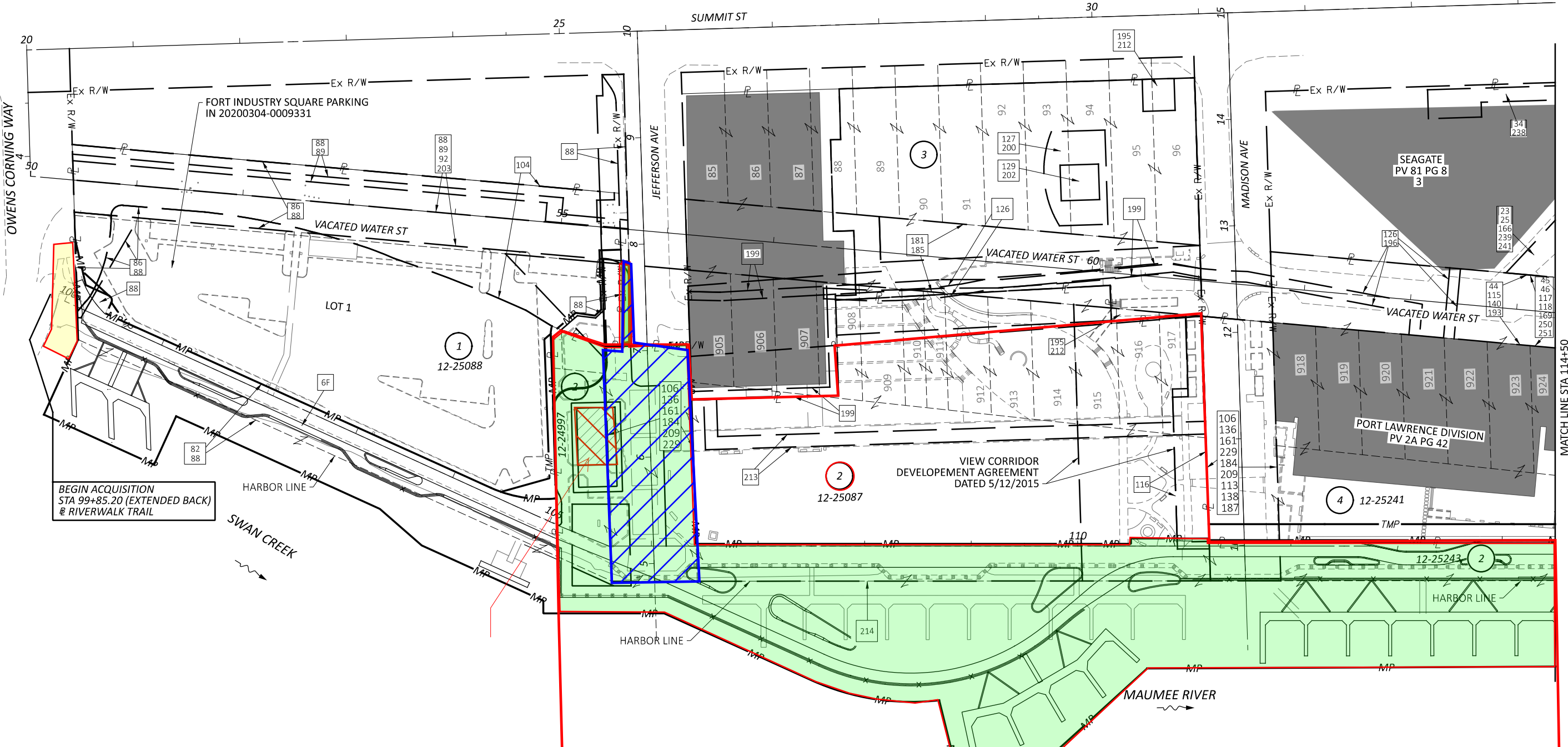
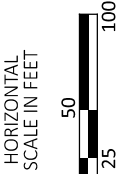


Exhibit A – Easement Areas



LUCAS COUNTY
CITY OF TOLEDO
RIVER TRACTS 1 & 2
TWELVE MILE RESERVE
SECTION 36, T-9-S, R-7-E



PROPERTY MAP (1 OF 4)

METROPARKS TOLEDO GLASS CITY RIVERWALK

MODEL: RM001_Sheet_PAPER SIZE: 17x11 (in.) DATE: 4/29/2022 TIME: 3:33:31 PM USER: SEA M:21190 (Metroparks Toledo - Riverwalk ROW Plans)\114239\400-Engineering\RW\Sheets\114239_RM000.dgn

OWNERSHIP LIST

- ① FIS PARKING, LLC
12-25088
- ② CITY OF TOLEDO
12-24997, 12-25087, 12-25243, 12-25304
- ③ PROMEDICA HEALTH SYSTEM, INC.
12-14418, 12-00014
- ④ PROMEDICA DOWNTOWN CAMPUS LANDLORD, LLC
12-25241

EASEMENT LIST

- ⑧② RIVERWALK EASEMENT
ORD 365-94
- ⑧⑧ WATER EASEMENT
IN 20200304-0009331
- ⑧⑥ RIVERWALK INGRESS & EGRESS ESM'T
IN 20200304-0009331
- ⑧⑥ WATER ST R/W VACATION
ORD 013-20, 519.94 & 013-20
- ⑧⑧ PEDESTRIAN ACCESS ESM'T
IN 20200304-0009331 &
IN 20200428-0015814
- ⑧⑧, ⑧⑨ 30' ACCESS EASEMENT
IN 20200304-0009331
- ⑩④ COMMODORE PARKING EASEMENT
MF 95-202-D04
- ⑧⑧ AREA DEDICATED TO CITY
IN 20200304-0009331
- ⑧⑧ WATER EASEMENT
IN 20200304-0009331
- ⑩⑥, ⑩③⑥, ⑩①, ⑩⑧④, ⑩②⑨, ⑩②⑨ CLOSURE OF JEFFERSON ST
ORD 657-80
- ⑩②③ 12' EDISON ESM'T
IN 20170308-0009992
- ⑩②④ LAND AND WATER CONSERVATION
FUND GRANT AREA
IN 20180309-0009676
- ⑩②④ 8' AT&T EASEMENT
IN 20180606-0024467
- ⑩①⑥ PROMEDICA DRIVE EASEMENT
IN 20151215-0052241
- ⑩②⑦, ⑩③⑥, ⑩①⑥, ⑩②⑨, ⑩①③, ⑩①③, ⑩①③, ⑩①③, ⑩①③ MADISON ST VACATION
ORD 510-15
IN 20151015-0043581
- ⑩②② 8' AT&T EASEMENT
IN 20180606-0024467
- ⑩②⑥, ⑩②② 10' BUCKEYE CABLE EASEMENT
IN 20170421-0017133
- ⑩①⑧, ⑩①⑤, ⑩①⑤ WATER ST. VACATION
ORD 799-68, ORD 716-80
& MF 80-426-D01
- ⑩②⑦ 8' AT&T EASEMENT
IN 20180606-0024467
- ⑩②⑦ WATER FEAT & HOLIDAY EASEMENT
IN 20181102-0049775
- ⑩②⑨, ⑩②② PLUMP ROOM EASEMENT
IN 20181102-0049777
- ⑩②② 30'x30' SIGN EASEMENT
IN 20151215-0052246
- ⑩②② SURFACE PARK EASEMENT
IN 20151215-0052246
- ④④, ④⑤, ④⑥, ④⑦, ④⑧, ④⑨ WATER ST. VACATION
ORD 512-15, ORD 350-81,
IN 20151015-0043583
- ④⑤, ④⑥, ④⑦, ④⑧, ④⑨ ACCESS ESM'T
IN 20151215-0052244
IN 20151215-0052245
- ⑥⑥ CONSENT TO DOCKS FOR COMMODORE
ORD 365-94

NOTES - OWNERSHIPS 7-9 NOT USED

REV. BY	DATE	DESCRIPTION



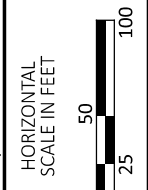
DESIGN AGENCY	SEA
REVIEWER	RJL MM-DD-YY
PROJECT ID	114239
SUBSET	5
TOTAL	33
SHEET	P.0
TOTAL	0

MODEL: RM002_Sheet PAPER SIZE: 17x11 (in.) DATE: 4/29/2022 TIME: 3:33:32 PM USER: SEA
M:21190 (Metroparks Toledo - Riverwalk ROW Plans)\114239\400-Engineering\RM\Sheets\114239_RM0000.dgn

OWNERSHIP LIST

- 2** CITY OF TOLEDO
12-25243, 12-25304, 12-25307,
14-55956, 14-55959, 15-47354, 15-47357
- 5** FIRST TDT, LLC
14-55949
- 4** PROMEDICA DOWNTOWN CAMPUS LANDLORD, LLC
12-25241
- 6** SEAGATE LAND PARTNERS, LLC
14-55950

**LUCAS COUNTY
CITY OF TOLEDO
RIVER TRACTS 1 & 2
TWELVE MILE RESERVE
SECTION 36, T-9-S, R-7-E**



EASEMENT LIST

- | | | | | |
|---|---|---|--|---|
| <p>44, 115, 140, 193 WATER ST. VACATION
ORD 512-15, ORD 350-81,
IN 20151015-0043583</p> <p>45, 46, 117, 118, 169, 250, 251 ACCESS ESM'T
IN 20151215-0052244
IN 20151215-0052245</p> <p>34, 238 PUBLIC ACCESS EASEMENT
MF 83-233-C06 & PV 100 PG 39</p> <p>23, 25, 166, 239, 241 ACCESS TUNNEL EASEMENT
MF 83-233-D01 & MF 83-235-A11</p> <p>23, 239 PARK AREA
PV 100 PG 40</p> <p>23, 239 STORM SEWER EASEMENT
PV 100 PG 40</p> | <p>106, 136, 161, 184, 209, 229, 114, 139, 249 ADAMS ST VACATION
ORD 511-15 & IN 20151015-0043582</p> <p>52, 57, 228 62' LIMITED UTILITY EASEMENT
PV 81 PG 8, ORD 216-79
& MF 79-160-E05</p> <p>23, 239 LEASE EASEMENTS
MF 83-233-D01</p> <p>33, 50, 164 OWENS ILLINOIS ACCESS EASEMENT
MF 82-316-B10</p> <p>159, 226 6' SEWER ESM'T
MF 532 PG 478</p> <p>33, 50, 164 6' UTILITY EASEMENT
MF 82-316-B10</p> | <p>29, 168, 246 30' MAINTENANCE EASEMENT
MF 83-508-C01</p> <p>67 MAINTENANCE EASEMENT
MF 83-505-D06</p> <p>52, 57, 228 45.5' LIMITED UTIL. ESM'T
PV 81 PG 8, ORD 216-79
& MF 79-160-E05</p> <p>67 BRICK PAVER EASEMENT
IN 20151218-0052746</p> <p>67 OUTDOOR PLAZA EASEMENT
MF 83-505-D06</p> <p>67 DRIVEWAY & PLANTER EASEMENT
MF 83-505-D06</p> | <p>47, 68 SUBTERRANEAN SEAGATE CONCOURSE
MF 83-509A03 & MF 83-510-B11</p> <p>158 15' TELEPHONE EASEMENT
DV 2617 PG 153</p> <p>63, 163, 230 WATER ST CLOSURE
ORD 350-81</p> <p>162 PARK EASEMENT
MF 81-396-B07</p> <p>67 CAISSON & BELL EASEMENT
MF 83-505-D06
AND
60.20'x2.79' MUTUAL SUPPORT ESM'T
MF 83-505-D06</p> | <p>67 WALK, STAIRWAY & LSCP EASEMENT
MF 83-505-D06</p> <p>160, 227 PARK DEDICATION
ORD 723-77
MF 77-652-D07</p> <p>67 5'x10' MH EASEMENT
MF 83-505-D06</p> <p>61 OWENS ILLINOIS CAISSON BELLS ESM'T
MF 80-188-E02</p> <p>64 OWENS ILLINOIS SOLDIER PILES ESM'T
MF 81-365B12</p> <p>64 OWENS ILLINOIS WALL EASEMENT
MF 81365-B03</p> <p>152 MFG RY. AGREEMENT
DV 267 PG 594</p> |
|---|---|---|--|---|

NOTES - OWNERSHIPS 7-9 NOT USED

REV. BY	DATE	DESCRIPTION
DATE COMPLETED		

DESIGN AGENCY

DESIGNER
SEA

REVIEWER
RJL MM-DD-YY

PROJECT ID
114239

SUBSET	TOTAL
6	33
SHEET	TOTAL
P.0	0

MAUMEE RIVER



MAIN ST

Exhibit B – The Harbor Beacon



Exhibit C – The Gazebo



Exhibit D – The Docks

